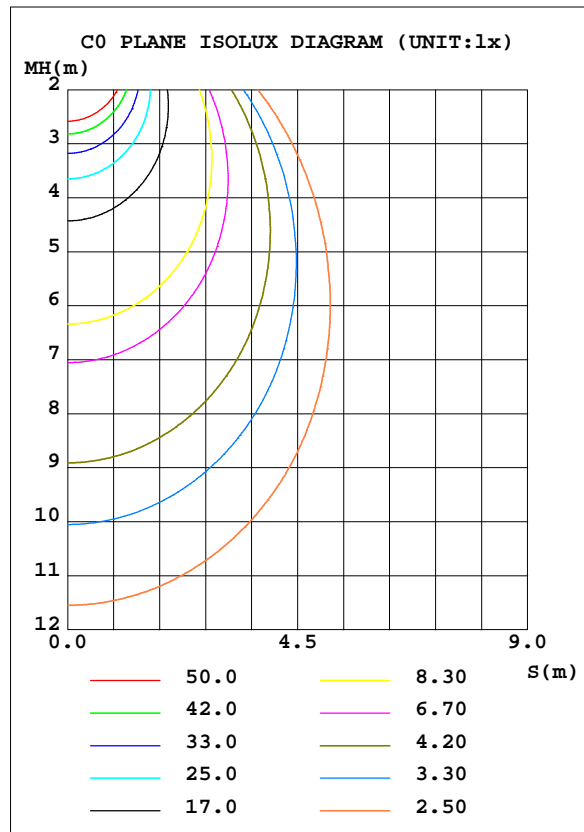
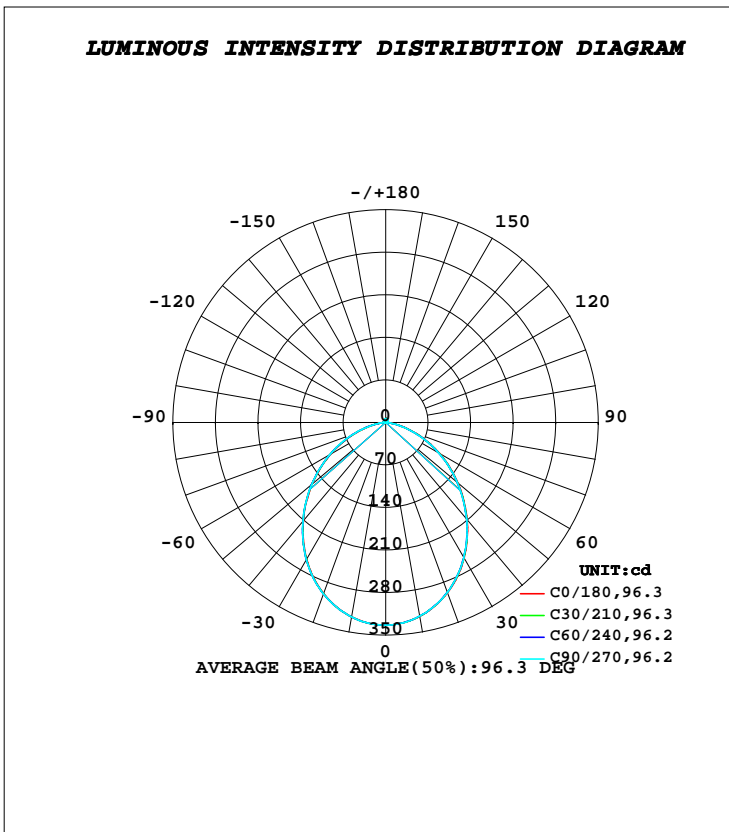


**LUMINAIRE PHOTOMETRIC TEST REPORT**

Test:U:220.50V I:0.0750A P:8.8000W PF:0.5350 Freq:50.00Hz		
Lamp Flux:794.136x1 lm		
Name: NS11-φ110MM-9W	Type: LED	
MFR.: Lumega Group	DIM.: D110*H42mm	
	SUR.: D75mm	

DATA OF LAMP		PHOTOMETRIC DATA			
MODEL		Imax(cd)	333.4	S/MH(C0/180)	1.16
NOMINAL POWER(W)	9	LOR(%)	100.0	S/MH(C90/270)	1.16
RATED VOLTAGE(V)	220	TOTAL FLUX(lm)	794.14	η UP, DN(C0-180)	1.3, 48.1
NOMINAL FLUX(lm)	794.136	CIE CLASS	DIRECT	η UP, DN(C180-360)	1.4, 49.3
LAMPS INSIDE	1	η up(%)	2.6	CIBSE SHR NOM	1.25
TEST VOLTAGE(V)	220	η down(%)	97.4	CIBSE SHR MAX	1.30



**C Range: 0 - 360DEG**  
**C Interval: 30.0DEG**  
**Test Speed: HIGH**  
**Temperature:25.3DEG**  
**Operators:DAMIN**  
**Test Date:2022-04-24**

**γ Range: 0 - 180DEG**  
**γ Interval: 1.0DEG**  
**Test System:EVERFINE GO-2000A\_V1 SYSTEM V2.00.443**  
**Humidity:65.0%**  
**Test Distance:8.000m [K=0.7063]**  
**Remarks:**

**ZONAL FLUX DIAGRAM**

**ZONAL FLUX DIAGRAM:**

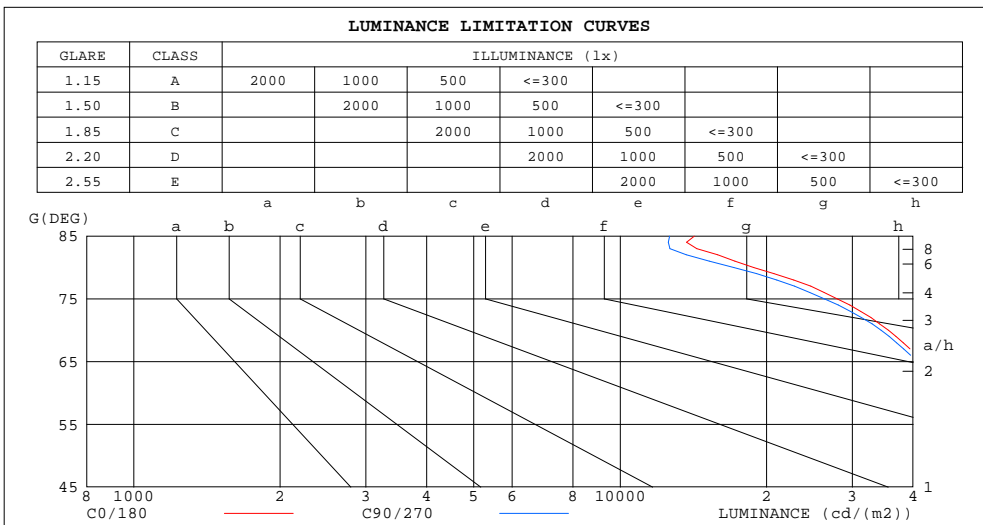
$\gamma$	C0	C45	C90	C135	C180	C225	C270	C315	$\gamma$	$\Phi$ zone	$\Phi$ total	%lum,lamp
10	324.0	323.7	323.7	324.3	324.8	324.9	324.8	324.5	0- 10	31.39	31.39	3.95,3.95
20	297.9	297.2	297.2	298.2	299.3	300.0	300.1	299.3	10- 20	88.27	119.7	15.1,15.1
30	258.0	257.1	257.1	258.5	260.1	261.1	261.3	260.1	20- 30	129.1	248.7	31.3,31.3
40	208.5	207.5	207.4	208.9	210.7	211.8	212.0	210.8	30- 40	147.0	395.7	49.8,49.8
50	155.7	154.1	154.0	156.2	158.7	159.5	159.3	158.0	40- 50	141.4	537.1	67.6,67.6
60	102.9	101.4	101.1	102.8	104.9	106.1	106.4	105.2	50- 60	116.4	653.5	82.3,82.3
70	53.57	52.15	51.81	53.13	54.89	56.28	56.96	55.87	60- 70	77.78	731.2	92.1,92.1
80	14.38	13.36	13.08	13.95	15.14	16.22	16.80	16.04	70- 80	35.01	766.2	96.5,96.5
90	1.245	1.089	1.103	1.396	1.730	1.915	1.953	1.702	80- 90	7.082	773.3	97.4,97.4
100	1.546	1.503	1.570	1.833	2.085	2.103	2.012	1.823	90-100	1.717	775.0	97.6,97.6
110	2.175	2.140	2.204	2.447	2.679	2.696	2.612	2.434	100-110	2.229	777.3	97.9,97.9
120	2.896	2.882	2.944	3.144	3.336	3.366	3.308	3.144	110-120	2.748	780.0	98.2,98.2
130	3.632	3.631	3.688	3.849	4.004	4.039	3.998	3.855	120-130	3.122	783.1	98.6,98.6
140	4.322	4.344	4.403	4.534	4.654	4.681	4.644	4.518	130-140	3.231	786.4	99,99
150	4.982	5.002	5.045	5.133	5.212	5.221	5.190	5.106	140-150	3.019	789.4	99.4,99.4
160	5.621	5.625	5.639	5.675	5.703	5.679	5.645	5.630	150-160	2.486	791.9	99.7,99.7
170	6.149	6.123	6.108	6.114	6.114	6.061	6.021	6.061	160-170	1.661	793.5	99.9,99.9
180	6.393	6.326	6.299	6.344	6.389	6.345	6.301	6.327	170-180	0.5923	794.1	100,100
DEG	LUMINOUS INTENSITY:cd									UNIT:lm		

**C Range: 0 - 360DEG**  
**C Interval: 30.0DEG**  
**Test Speed: HIGH**  
**Temperature:25.3DEG**  
**Operators:DAMIN**  
**Test Date:2022-04-24**

**$\gamma$  Range: 0 - 180DEG**  
 **$\gamma$  Interval: 1.0DEG**  
**Test System:EVERFINE GO-2000A\_V1 SYSTEM V2.00.443**  
**Humidity:65.0%**  
**Test Distance:8.000m [K=0.7063]**  
**Remarks:**

**LUMINANCE LIMITATION CURVES**

Test:U:220.50V I:0.0750A P:8.8000W PF:0.5350 Freq:50.00Hz		
Lamp Flux:794.136x1 lm		
Name: NS11-φ110MM-9W	Type: LED	
MFR.: Lumega Group	DIM.: D110*H42mm	
	SUR.: D75mm	



LUMINANCE cd/(m2)		
G(DEG)	C0/180	C90/270
85	14198	12640
80	18823	17125
75	27951	26291
70	35598	34427
65	41774	40757
60	46776	45962
55	51115	50447
50	55043	54448
45	58452	58116

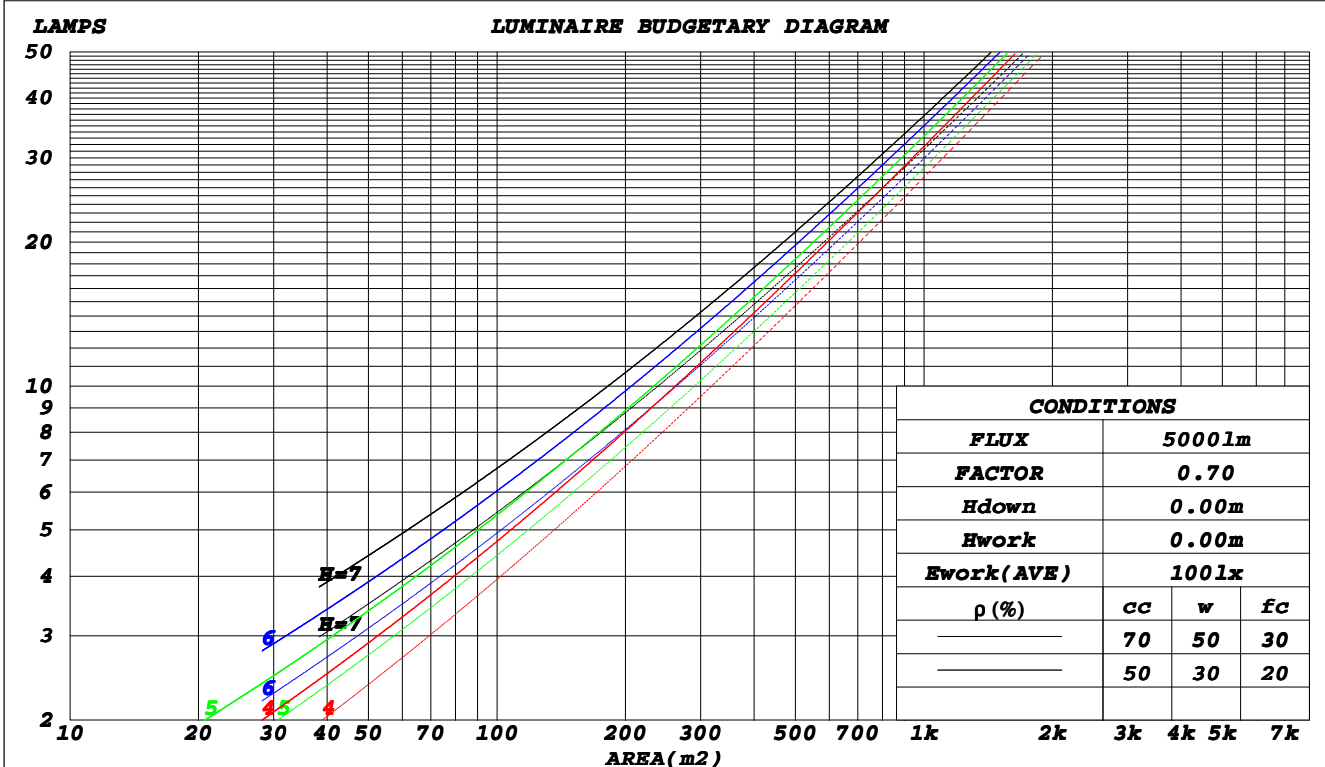
**C Range: 0 - 360DEG**  
**C Interval: 30.0DEG**  
**Test Speed: HIGH**  
**Temperature: 25.3DEG**  
**Operators: DAMIN**  
**Test Date: 2022-04-24**

**γ Range: 0 - 180DEG**  
**γ Interval: 1.0DEG**  
**Test System: EVERFINE GO-2000A\_V1 SYSTEM V2.00.443**  
**Humidity: 65.0%**  
**Test Distance: 8.000m [K=0.7063]**  
**Remarks:**

**CU AND LUMINAIRE BUDGETARY ESTIMATE DIAGRAM**

Test:U:220.50V I:0.0750A P:8.8000W PF:0.5350 Freq:50.00Hz		
Lamp Flux:794.136x1 lm		
Name: NS11-φ110MM-9W	Type: LED	
MFR.: Lumega Group	DIM.: D110*H42mm	
	SUR.: D75mm	

ρcc	80%			70%			50%			30%			10%			0
ρw	50%	30%	10%	50%	30%	10%	50%	30%	10%	50%	30%	10%	50%	30%	10%	0
ρfc	20%			20%			20%			20%			20%			0
RCR	RCR:Room Cavity Ratio						Coefficients of Utilization(CU)									
0.0	1.18	1.18	1.18	1.15	1.15	1.15	1.10	1.10	1.10	1.04	1.04	1.04	.00	.00	.00	.97
1.0	1.05	1.01	.98	1.02	.99	.96	.98	.95	.92	.93	.91	.89	.89	.88	.86	.84
2.0	.93	.86	.81	.90	.85	.80	.87	.82	.78	.83	.79	.75	.80	.76	.73	.71
3.0	.82	.74	.68	.80	.73	.68	.77	.71	.66	.74	.69	.65	.71	.67	.63	.61
4.0	.73	.65	.59	.72	.64	.58	.69	.62	.57	.66	.61	.56	.64	.59	.55	.53
5.0	.66	.57	.51	.64	.56	.51	.62	.55	.50	.60	.54	.49	.58	.53	.48	.46
6.0	.59	.51	.45	.58	.50	.45	.56	.49	.44	.54	.48	.43	.53	.47	.43	.41
7.0	.54	.46	.40	.53	.45	.40	.51	.44	.39	.50	.43	.39	.48	.43	.38	.36
8.0	.50	.41	.36	.49	.41	.36	.47	.40	.35	.46	.39	.35	.44	.39	.34	.33
9.0	.46	.38	.32	.45	.37	.32	.44	.37	.32	.42	.36	.32	.41	.35	.31	.29
10.0	.42	.34	.29	.42	.34	.29	.40	.34	.29	.39	.33	.29	.38	.33	.29	.27



C Range: 0 - 360DEG  
 C Interval: 30.0DEG  
 Test Speed: HIGH  
 Temperature: 25.3DEG  
 Operators: DAMIN  
 Test Date: 2022-04-24

γ Range: 0 - 180DEG  
 γ Interval: 1.0DEG  
 Test System: EVERFINE GO-2000A\_V1 SYSTEM V2.00.443  
 Humidity: 65.0%  
 Test Distance: 8.000m [K=0.7063]  
 Remarks:

**WEC AND CCEC**

Test:U:220.50V I:0.0750A P:8.8000W PF:0.5350 Freq:50.00Hz		
Lamp Flux:794.136x1 lm		
Name: NS11-φ110MM-9W	Type: LED	
MFR.: Lumega Group	DIM.: D110*H42mm	
	SUR.: D75mm	

ρ <sub>cc</sub>	80%			70%			50%			30%			10%			0
ρ <sub>w</sub>	50%	30%	10%	50%	30%	10%	50%	30%	10%	50%	30%	10%	50%	30%	10%	0
ρ <sub>fc</sub>	20%			20%			20%			20%			20%			0
<b>RCR</b>	<b>RCR:Room Cavity Ratio</b>						<b>Wall Exitance Coefficients(WEC)</b>									
0.0																
1.0	.277	.158	.050	.269	.154	.049	.255	.146	.047	.241	.139	.045	.229	.133	.043	
2.0	.266	.146	.045	.259	.143	.044	.246	.137	.042	.234	.131	.041	.223	.126	.040	
3.0	.249	.133	.040	.243	.130	.039	.232	.126	.038	.221	.121	.037	.211	.117	.036	
4.0	.232	.121	.035	.227	.119	.035	.217	.115	.034	.207	.111	.034	.199	.108	.033	
5.0	.216	.110	.032	.212	.109	.032	.203	.105	.031	.194	.102	.030	.186	.100	.030	
6.0	.202	.101	.029	.198	.100	.029	.190	.097	.028	.182	.095	.028	.175	.092	.027	
7.0	.189	.093	.026	.185	.092	.026	.178	.090	.026	.171	.088	.026	.165	.086	.025	
8.0	.177	.087	.024	.174	.086	.024	.167	.084	.024	.161	.082	.024	.155	.080	.023	
9.0	.167	.081	.023	.164	.080	.022	.158	.078	.022	.152	.076	.022	.147	.075	.022	
10.0	.157	.075	.021	.154	.075	.021	.149	.073	.021	.144	.071	.020	.139	.070	.020	

ρ <sub>cc</sub>	80%			70%			50%			30%			10%			0
ρ <sub>w</sub>	50%	30%	10%	50%	30%	10%	50%	30%	10%	50%	30%	10%	50%	30%	10%	0
ρ <sub>fc</sub>	20%			20%			20%			20%			20%			0
<b>RCR</b>	<b>RCR:Room Cavity Ratio</b>						<b>Ceiling Cavity Exitance Coefficients(CCEC)</b>									
0.0	.210	.210	.210	.180	.180	.180	.123	.123	.123	.071	.071	.071	.023	.023	.023	
1.0	.198	.177	.157	.170	.152	.135	.116	.104	.093	.067	.060	.054	.021	.019	.018	
2.0	.189	.152	.121	.162	.131	.105	.111	.091	.073	.064	.053	.043	.021	.017	.014	
3.0	.181	.135	.098	.155	.116	.085	.106	.081	.059	.061	.047	.035	.020	.015	.011	
4.0	.173	.121	.081	.149	.105	.071	.102	.073	.050	.059	.043	.029	.019	.014	.010	
5.0	.166	.111	.070	.142	.096	.061	.098	.067	.043	.057	.039	.025	.018	.013	.008	
6.0	.159	.102	.061	.137	.088	.053	.094	.062	.038	.055	.036	.022	.018	.012	.007	
7.0	.152	.095	.055	.131	.083	.048	.091	.058	.034	.053	.034	.020	.017	.011	.007	
8.0	.146	.089	.050	.126	.078	.044	.087	.054	.031	.051	.032	.019	.016	.011	.006	
9.0	.140	.085	.047	.121	.073	.041	.084	.052	.029	.049	.030	.017	.016	.010	.006	
10.0	.135	.080	.044	.116	.070	.038	.081	.049	.027	.047	.029	.016	.015	.010	.005	

**C Range: 0 - 360DEG**  
**C Interval: 30.0DEG**  
**Test Speed: HIGH**  
**Temperature:25.3DEG**  
**Operators:DAMIN**  
**Test Date:2022-04-24**

**γ Range: 0 - 180DEG**  
**γ Interval: 1.0DEG**  
**Test System:EVERFINE GO-2000A\_V1 SYSTEM V2.00.443**  
**Humidity:65.0%**  
**Test Distance:8.000m [K=0.7063]**  
**Remarks:**

**UGR(Unified Glare Rating) Table**

Test:U:220.50V I:0.0750A P:8.8000W PF:0.5350 Freq:50.00Hz		
Lamp Flux:794.136x1 lm		
Name: NS11-φ110MM-9W	Type: LED	
MFR.: Lumega Group	DIM.: D110*H42mm	
	SUR.: D75mm	

ceiling/cavity	0.7	0.7	0.5	0.5	0.3	0.7	0.7	0.5	0.5	0.3
walls	0.5	0.3	0.5	0.3	0.3	0.5	0.3	0.5	0.3	0.3
working plane	0.2	0.2	0.2	0.2	0.2	0.2	0.2	0.2	0.2	0.2
Room dimensions	Viewed crosswise					Viewed endwise				
<b>x = 2H y = 2H</b>	26.1	27.5	26.4	27.7	28.0	26.0	27.4	26.3	27.7	27.9
3H	27.1	28.4	27.4	28.7	29.0	27.0	28.3	27.4	28.6	28.9
4H	27.4	28.6	27.8	28.9	29.2	27.3	28.5	27.7	28.8	29.1
6H	27.5	28.7	27.9	29.0	29.3	27.4	28.5	27.8	28.9	29.2
8H	27.5	28.6	27.9	29.0	29.3	27.4	28.5	27.8	28.8	29.1
12H	27.5	28.6	27.9	28.9	29.3	27.4	28.4	27.7	28.8	29.1
<b>4H 2H</b>	26.5	27.7	26.9	28.0	28.3	26.5	27.7	26.8	28.0	28.3
3H	27.7	28.8	28.1	29.1	29.4	27.6	28.7	28.0	29.0	29.4
4H	28.1	29.0	28.5	29.4	29.8	28.0	28.9	28.4	29.3	29.7
6H	28.3	29.1	28.7	29.5	29.9	28.1	29.0	28.6	29.4	29.8
8H	28.3	29.1	28.7	29.5	29.9	28.1	28.9	28.6	29.3	29.8
12H	28.3	29.0	28.7	29.4	29.9	28.1	28.8	28.6	29.3	29.7
<b>8H 4H</b>	28.2	28.9	28.6	29.4	29.8	28.1	28.9	28.5	29.3	29.7
6H	28.4	29.0	28.9	29.5	30.0	28.3	28.9	28.8	29.4	29.9
8H	28.4	29.0	28.9	29.5	30.0	28.3	28.9	28.8	29.4	29.9
12H	28.5	29.0	29.0	29.5	30.0	28.3	28.8	28.9	29.3	29.8
<b>12H 4H</b>	28.1	28.8	28.6	29.3	29.7	28.0	28.8	28.5	29.2	29.6
6H	28.4	29.0	28.9	29.4	29.9	28.3	28.8	28.8	29.3	29.8
8H	28.4	28.9	29.0	29.4	30.0	28.3	28.8	28.8	29.3	29.8
<b>Variations with the observer position at spacings(CIE Pub.117):</b>										
<b>S = 1.0H</b>	+ 0.3 / - 0.3					+ 0.3 / - 0.4				
1.5H	+ 0.2 / - 0.3					+ 0.2 / - 0.4				
2.0H	+ 0.5 / - 0.4					+ 0.5 / - 0.4				

CIE Pub.117, 794.1 lm Total Lamp Luminous Flux Corrected (8log(F/F0) = -0.8)  
 Area: 0.0044 m2

**C Range: 0 - 360DEG**  
**C Interval: 30.0DEG**  
**Test Speed: HIGH**  
**Temperature:25.3DEG**  
**Operators:DAMIN**  
**Test Date:2022-04-24**

**γ Range: 0 - 180DEG**  
**γ Interval: 1.0DEG**  
**Test System:EVERFINE GO-2000A\_V1 SYSTEM V2.00.443**  
**Humidity:65.0%**  
**Test Distance:8.000m [K=0.7063]**  
**Remarks:**

**UTILIZATION FACTORS TABLE**

Test:U:220.50V I:0.0750A P:8.8000W PF:0.5350 Freq:50.00Hz Lamp Flux:794.136x1 lm		
Name: NS11-φ110MM-9W	Type: LED	
MFR.: Lumega Group	DIM.: D110*H42mm	
	SUR.: D75mm	

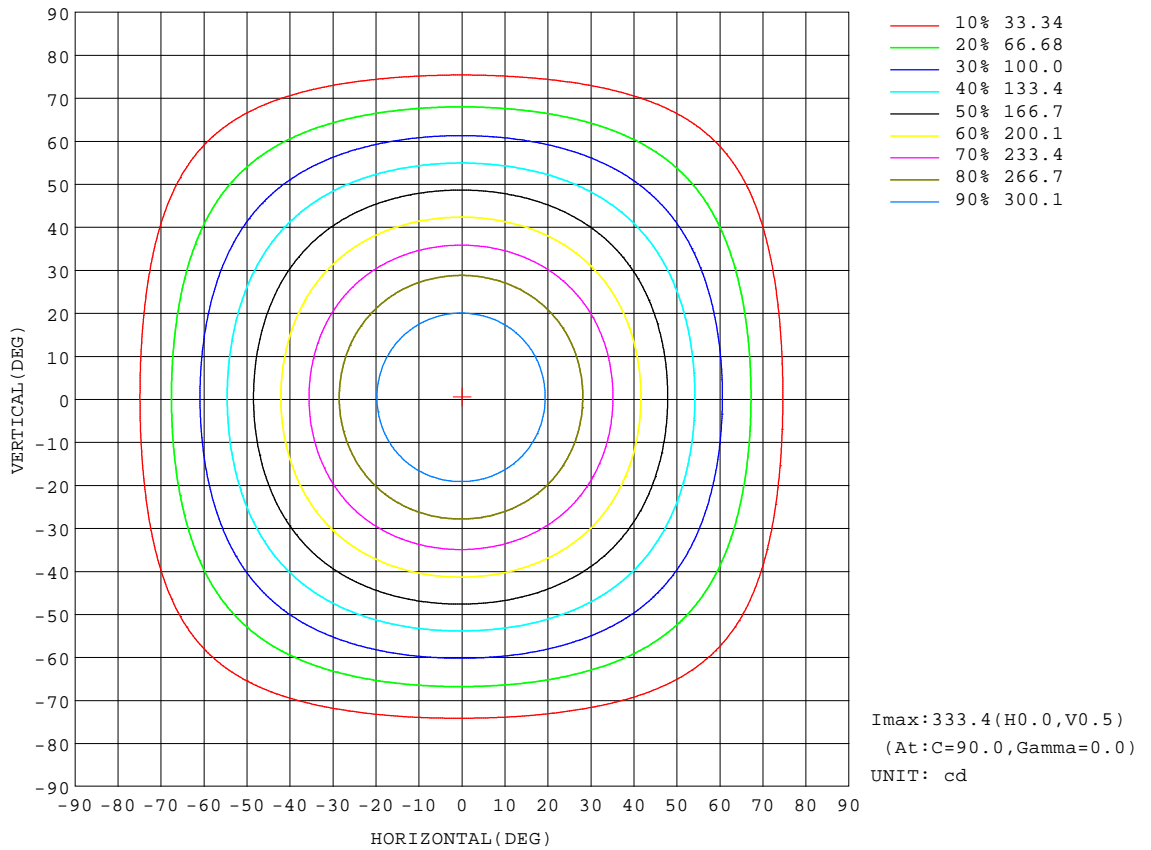
REFLECTANCE										
Ceiling	0.8	0.8	0.8	0.7	0.7	0.7	0.5	0.5	0.5	0
Walls	0.7	0.5	0.3	0.7	0.5	0.3	0.7	0.5	0.3	0
Working plane	0.2	0.2	0.2	0.2	0.2	0.2	0.2	0.2	0.2	0
<b>ROOM INDEX</b>	<b>UTILIZATION FACTORS(PERCENT) <math>k(RI) \times RCR = 5</math></b>									
<b>k = 0.60</b>	60	49	43	60	49	43	58	48	42	36
<b>0.80</b>	70	60	53	69	59	52	67	58	52	45
<b>1.00</b>	79	68	62	77	68	61	75	69	61	54
<b>1.25</b>	86	76	69	84	75	69	81	73	68	61
<b>1.50</b>	90	81	75	89	80	74	85	78	73	66
<b>2.00</b>	97	89	83	95	88	82	91	85	80	73
<b>2.50</b>	100	93	88	98	92	87	94	89	84	76
<b>3.00</b>	103	97	92	101	95	91	97	92	88	80
<b>4.00</b>	107	102	98	104	100	96	100	96	93	84
<b>5.00</b>	109	105	101	107	103	99	102	99	96	86
<b>ROOM INDEX</b>	<b>UF(total)</b>									<b>Direct</b>
<b>According to DIN EN 13032-2 2004</b>			<b>Suspended</b>					<b>SHRNO = 1.25</b>		

**C Range: 0 - 360DEG**  
**C Interval: 30.0DEG**  
**Test Speed: HIGH**  
**Temperature:25.3DEG**  
**Operators:DAMIN**  
**Test Date:2022-04-24**

**γ Range: 0 - 180DEG**  
**γ Interval: 1.0DEG**  
**Test System:EVERFINE GO-2000A\_V1 SYSTEM V2.00.443**  
**Humidity:65.0%**  
**Test Distance:8.000m [K=0.7063]**  
**Remarks:**

**ISOCANDELA DIAGRAM**

Test:U:220.50V I:0.0750A P:8.8000W PF:0.5350 Freq:50.00Hz		
Lamp Flux:794.136x1 lm		
Name: NS11-φ110MM-9W	Type: LED	
MFR.: Lumega Group	DIM.: D110*H42mm	
	SUR.: D75mm	



**C Range: 0 - 360DEG**  
**C Interval: 30.0DEG**  
**Test Speed: HIGH**  
**Temperature: 25.3DEG**  
**Operators: DAMIN**  
**Test Date: 2022-04-24**

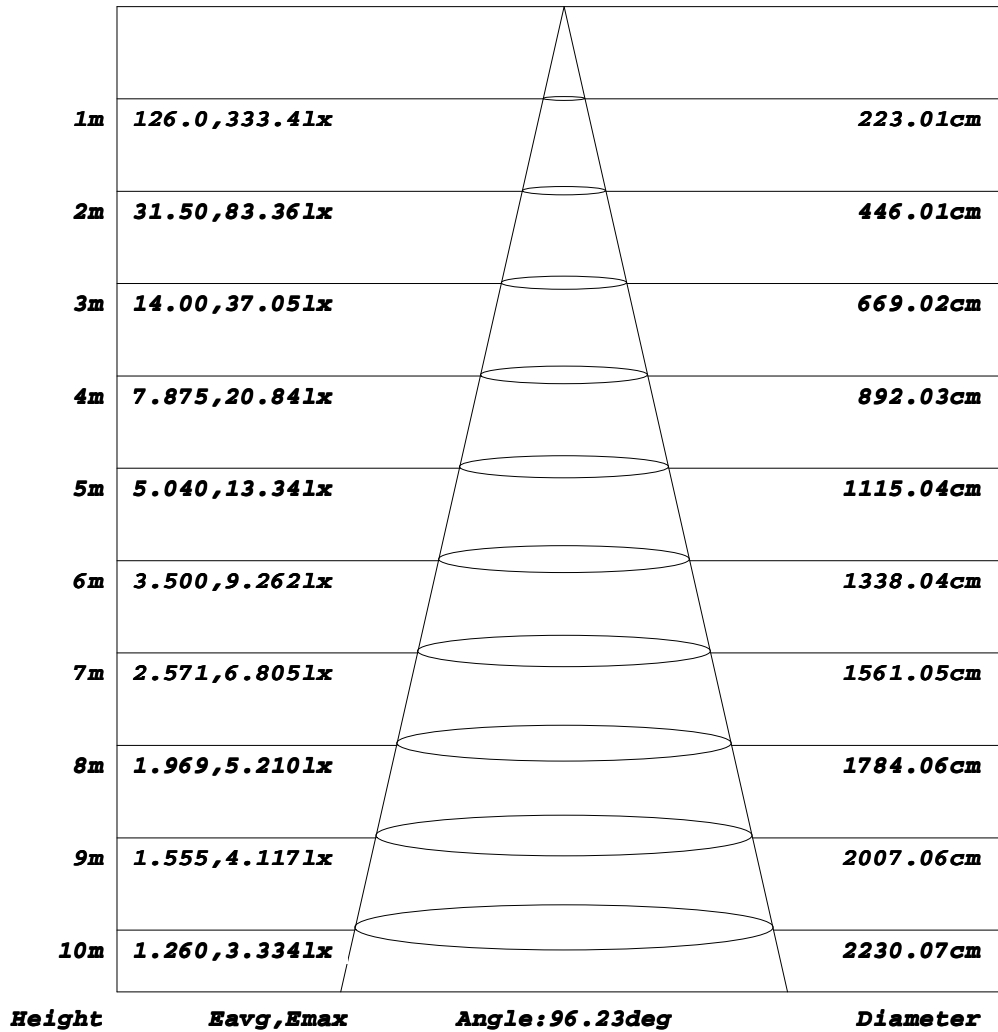
**γ Range: 0 - 180DEG**  
**γ Interval: 1.0DEG**  
**Test System: EVERFINE GO-2000A\_V1 SYSTEM V2.00.443**  
**Humidity: 65.0%**  
**Test Distance: 8.000m [K=0.7063]**  
**Remarks:**



**AAI Figure**

Test:U:220.50V I:0.0750A P:8.8000W PF:0.5350 Freq:50.00Hz		
Lamp Flux:794.136x1 lm		
Name: NS11-φ110MM-9W	Type: LED	
MFR.: Lumega Group	DIM.: D110*H42mm	
	SUR.: D75mm	

**Flux out:523.8 lm**



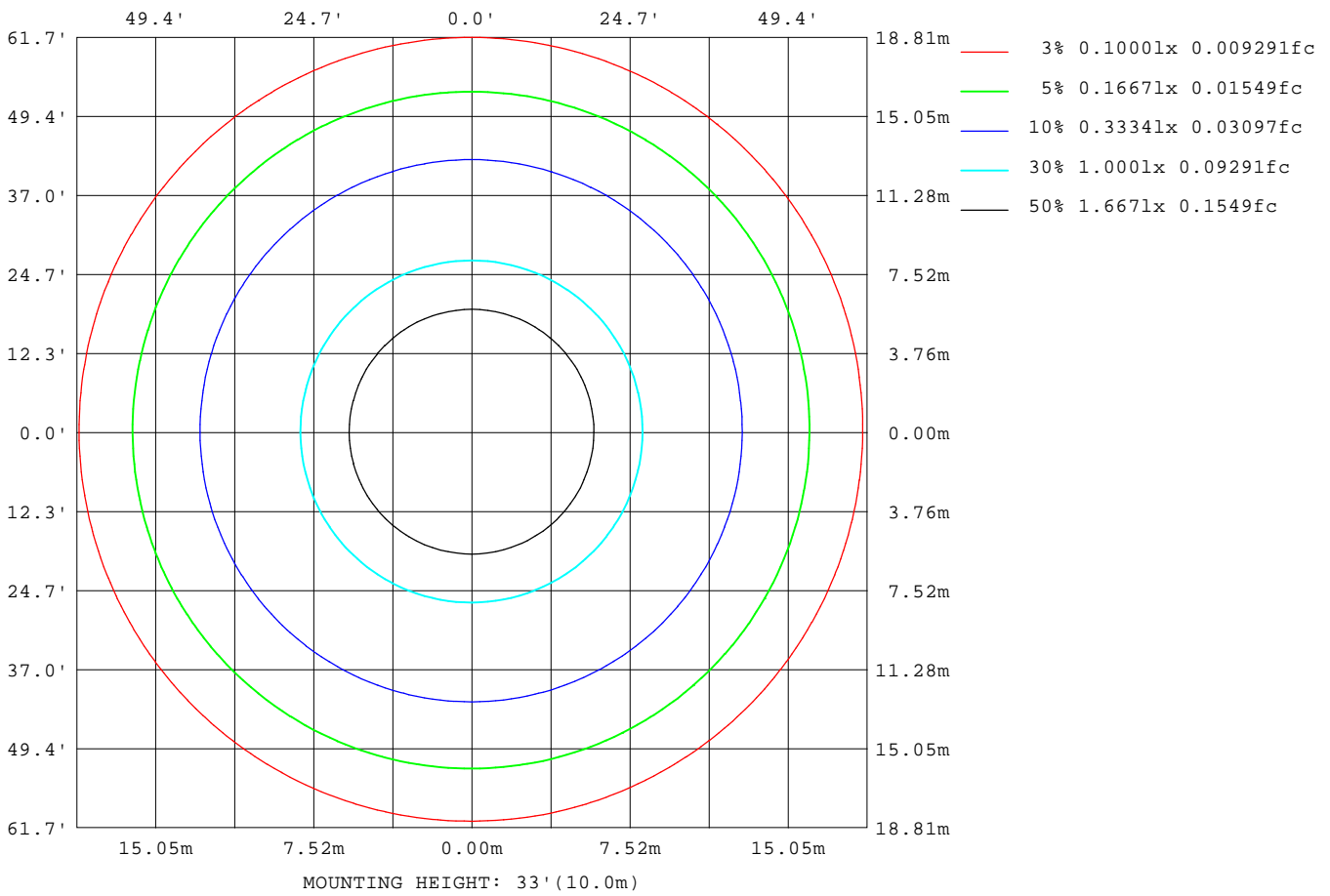
Note: The Curves indicate the illuminated area and the average illumination when the luminaire is at different distance.

**C Range: 0 - 360DEG**  
**C Interval: 30.0DEG**  
**Test Speed: HIGH**  
**Temperature: 25.3DEG**  
**Operators: DAMIN**  
**Test Date: 2022-04-24**

**γ Range: 0 - 180DEG**  
**γ Interval: 1.0DEG**  
**Test System: EVERFINE GO-2000A\_V1 SYSTEM V2.00.443**  
**Humidity: 65.0%**  
**Test Distance: 8.000m [K=0.7063]**  
**Remarks:**

**ISOLUX DIAGRAM**

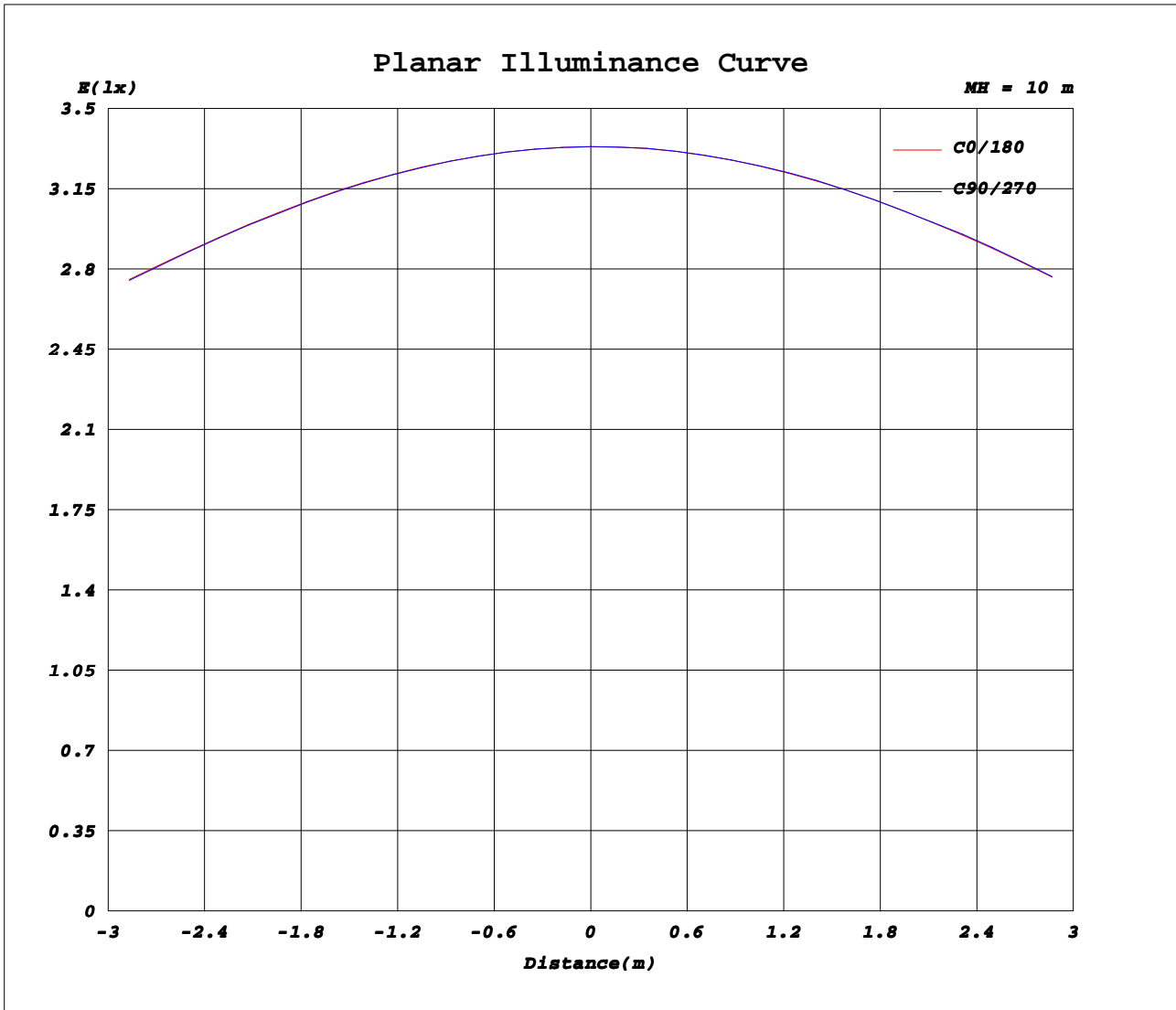
Test:U:220.50V I:0.0750A P:8.8000W PF:0.5350 Freq:50.00Hz		
Lamp Flux:794.136x1 lm		
Name: NS11-φ110MM-9W	Type: LED	
MFR.: Lumega Group	DIM.: D110*H42mm	
	SUR.: D75mm	



**C Range: 0 - 360DEG**  
**C Interval: 30.0DEG**  
**Test Speed: HIGH**  
**Temperature: 25.3DEG**  
**Operators: DAMIN**  
**Test Date: 2022-04-24**

**γ Range: 0 - 180DEG**  
**γ Interval: 1.0DEG**  
**Test System: EVERFINE GO-2000A\_V1 SYSTEM V2.00.443**  
**Humidity: 65.0%**  
**Test Distance: 8.000m [K=0.7063]**  
**Remarks:**

**Planar Illuminance Curve**



**C Range: 0 - 360DEG**  
**C Interval: 30.0DEG**  
**Test Speed: HIGH**  
**Temperature: 25.3DEG**  
**Operators: DAMIN**  
**Test Date: 2022-04-24**

**γ Range: 0 - 180DEG**  
**γ Interval: 1.0DEG**  
**Test System: EVERFINE GO-2000A\_V1 SYSTEM V2.00.443**  
**Humidity: 65.0%**  
**Test Distance: 8.000m [K=0.7063]**  
**Remarks:**

**LUMINOUS DISTRIBUTION INTENSITY DATA**

Test:U:220.50V I:0.0750A P:8.8000W PF:0.5350 Freq:50.00Hz Lamp Flux:794.136x1 lm		
Name: NS11-φ110MM-9W	Type: LED	
MFR.: Lumega Group	DIM.: D110*H42mm	
	SUR.: D75mm	

Table--1

UNIT: cd

C (DEG) \ γ (DEG)	0	30	60	90	120	150	180	210	240	270	300	330								
0	333	333	333	333	333	333	333	333	333	333	333	333								
5	331	331	331	331	331	331	331	331	331	331	331	331								
10	324	324	324	324	324	324	325	325	325	325	325	325								
15	313	312	312	312	313	313	314	314	314	314	314	314								
20	298	297	297	297	298	299	299	300	300	300	300	299								
25	280	279	279	279	280	280	281	282	282	282	282	281								
30	258	257	257	257	258	259	260	261	261	261	261	260								
35	234	233	233	233	234	235	236	237	237	237	237	236								
40	208	208	207	207	208	210	211	212	212	212	211	210								
45	182	181	181	181	182	183	185	186	186	186	185	184								
50	156	154	154	154	155	157	159	159	160	159	159	157								
55	129	128	127	127	128	130	131	132	133	133	132	131								
60	103	102	101	101	102	104	105	106	106	106	106	105								
65	77.7	76.4	75.8	75.8	76.7	78.0	79.3	80.4	81.1	81.3	80.8	79.5								
70	53.6	52.4	51.9	51.8	52.6	53.7	54.9	55.9	56.7	57.0	56.4	55.3								
75	31.8	30.7	30.0	29.9	30.7	31.7	32.9	33.8	34.5	34.8	34.4	33.4								
80	14.4	13.6	13.1	13.1	13.6	14.3	15.1	15.9	16.5	16.8	16.4	15.6								
85	5.44	4.98	4.78	4.85	5.40	6.05	6.63	6.68	6.55	6.31	6.08	5.79								
90	1.24	1.11	1.06	1.10	1.28	1.51	1.73	1.87	1.96	1.95	1.82	1.58								
95	1.29	1.24	1.25	1.31	1.47	1.65	1.81	1.85	1.84	1.77	1.66	1.50								
100	1.55	1.50	1.51	1.57	1.74	1.93	2.08	2.12	2.09	2.01	1.90	1.75								
105	1.85	1.80	1.81	1.87	2.04	2.22	2.38	2.40	2.37	2.29	2.18	2.04								
110	2.18	2.13	2.14	2.20	2.36	2.53	2.68	2.71	2.68	2.61	2.51	2.36								
115	2.53	2.50	2.51	2.57	2.71	2.86	2.99	3.02	3.01	2.96	2.86	2.72								
120	2.90	2.87	2.89	2.94	3.07	3.21	3.34	3.37	3.36	3.31	3.21	3.08								
125	3.26	3.25	3.26	3.32	3.44	3.57	3.68	3.72	3.71	3.66	3.57	3.44								
130	3.63	3.62	3.64	3.69	3.79	3.91	4.00	4.04	4.04	4.00	3.92	3.79								
135	3.98	3.98	4.00	4.05	4.15	4.25	4.33	4.37	4.37	4.33	4.25	4.14								
140	4.32	4.33	4.36	4.40	4.49	4.58	4.65	4.68	4.68	4.64	4.57	4.46								
145	4.66	4.67	4.70	4.74	4.80	4.87	4.93	4.95	4.95	4.92	4.86	4.78								
150	4.98	4.99	5.01	5.04	5.10	5.16	5.21	5.23	5.22	5.19	5.14	5.07								
155	5.30	5.32	5.33	5.36	5.40	5.43	5.46	5.46	5.45	5.43	5.40	5.35								
160	5.62	5.62	5.63	5.64	5.66	5.69	5.70	5.69	5.67	5.65	5.63	5.63								
165	5.91	5.89	5.88	5.88	5.90	5.91	5.92	5.90	5.87	5.85	5.85	5.87								
170	6.15	6.13	6.12	6.11	6.11	6.12	6.11	6.08	6.04	6.02	6.04	6.08								
175	6.36	6.33	6.30	6.28	6.28	6.27	6.27	6.22	6.18	6.16	6.20	6.26								
180	6.39	6.34	6.31	6.30	6.33	6.36	6.39	6.36	6.33	6.30	6.31	6.34								

**C Range: 0 - 360DEG**  
**C Interval: 30.0DEG**  
**Test Speed: HIGH**  
**Temperature: 25.3DEG**  
**Operators: DAMIN**  
**Test Date: 2022-04-24**

**γ Range: 0 - 180DEG**  
**γ Interval: 1.0DEG**  
**Test System: EVERFINE GO-2000A\_V1 SYSTEM V2.00.443**  
**Humidity: 65.0%**  
**Test Distance: 8.000m [K=0.7063]**  
**Remarks:**