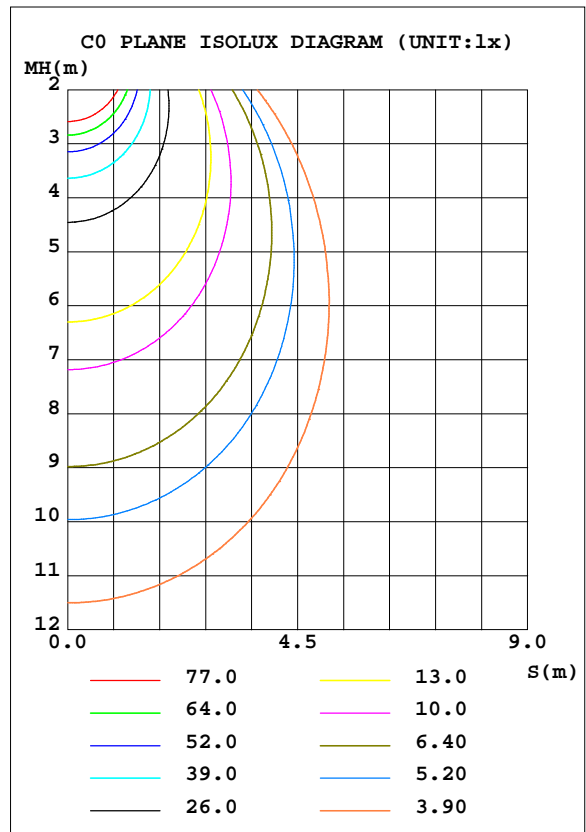
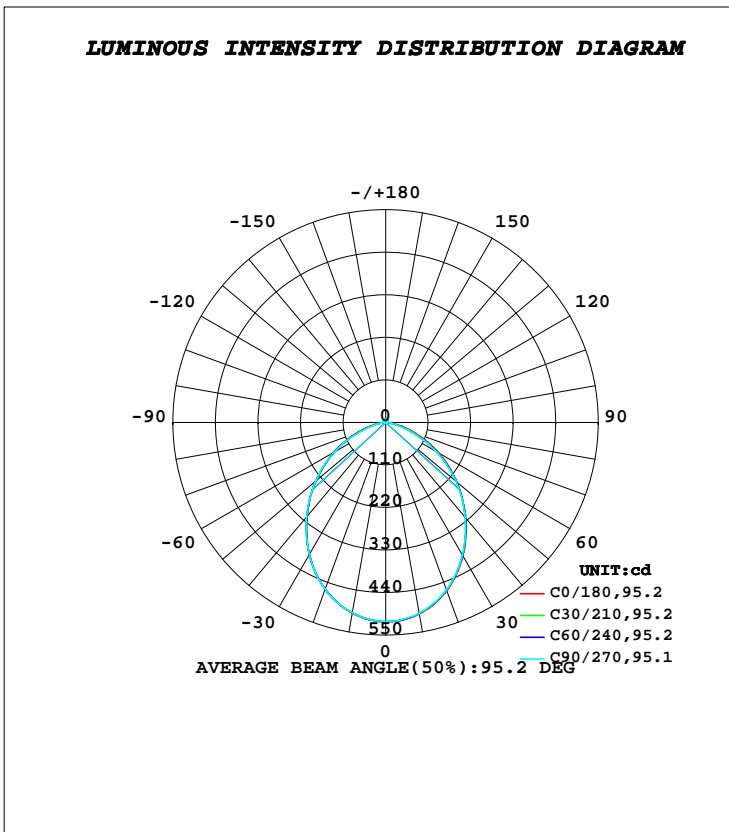


LUMINAIRE PHOTOMETRIC TEST REPORT

Test:U:220.50V I:0.1060A P:12.100W PF:0.5200 Freq:50.00Hz		
Lamp Flux:1192.72x1 lm		
Name: NS11-φ140MM-12W	Type: LED	
MFR.: Lumega Group	DIM.: D140*H55mm	
	SUR.: D100mm	

DATA OF LAMP		PHOTOMETRIC DATA			
MODEL		Imax(cd)	515.9	S/MH(C0/180)	1.16
NOMINAL POWER(W)	12	LOR(%)	100.0	S/MH(C90/270)	1.16
RATED VOLTAGE(V)	220	TOTAL FLUX(lm)	1192.7	η UP, DN(C0-180)	1.2,48.8
NOMINAL FLUX(lm)	1192.72	CIE CLASS	DIRECT	η UP, DN(C180-360)	1.3,48.7
LAMPS INSIDE	1	η up(%)	2.6	CIBSE SHR NOM	1.25
TEST VOLTAGE(V)	220	η down(%)	97.4	CIBSE SHR MAX	1.30



C Range: 0 - 360DEG
C Interval: 30.0DEG
Test Speed: HIGH
Temperature:25.3DEG
Operators:DAMIN
Test Date:2022-04-24

γ Range: 0 - 180DEG
γ Interval: 1.0DEG
Test System:EVERFINE GO-2000A_V1 SYSTEM V2.00.443
Humidity:65.0%
Test Distance:8.000m [K=0.7063]
Remarks:

ZONAL FLUX DIAGRAM

ZONAL FLUX DIAGRAM:

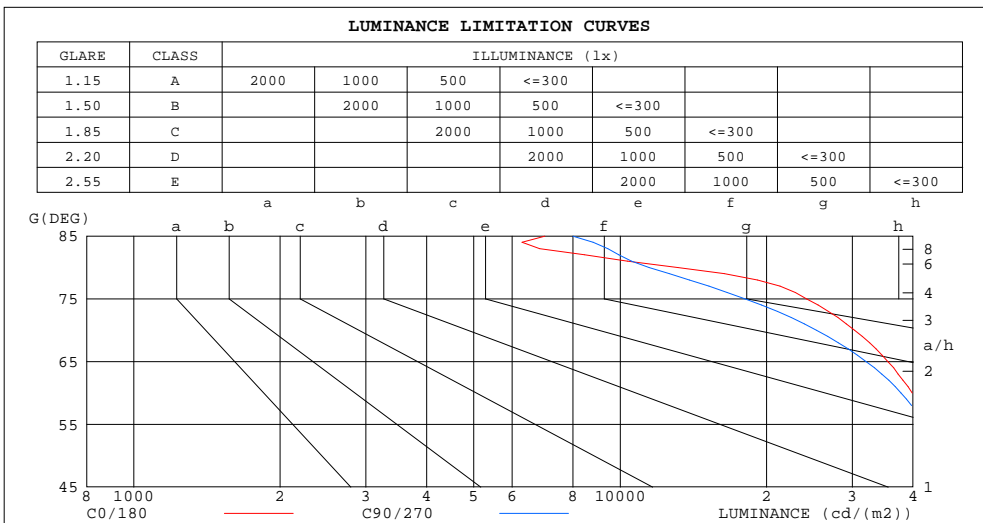
γ	C0	C45	C90	C135	C180	C225	C270	C315	γ	Φ zone	Φ total	%lum, lamp
10	502.7	501.6	500.8	500.4	500.2	499.6	499.4	500.6	0- 10	48.48	48.48	4.06,4.06
20	462.5	461.3	460.2	459.2	458.4	458.3	458.7	460.2	10- 20	136.1	184.6	15.5,15.5
30	399.1	397.8	396.7	395.6	394.8	394.6	395.1	396.7	20- 30	198.0	382.6	32.1,32.1
40	322.3	321.1	319.7	317.9	316.6	317.0	318.2	320.0	30- 40	224.1	606.7	50.9,50.9
50	240.9	239.2	237.8	236.8	236.1	236.1	236.8	238.4	40- 50	214.9	821.5	68.9,68.9
60	159.4	154.0	151.1	152.5	154.6	153.5	152.7	155.1	50- 60	175.0	996.5	83.5,83.5
70	83.04	73.53	69.32	74.09	79.47	75.25	71.22	74.90	60- 70	112.1	1109	93,93
80	18.26	16.27	15.94	18.64	21.08	18.92	16.39	16.59	70- 80	46.19	1155	96.8,96.8
90	1.877	1.644	1.674	2.144	2.654	2.845	2.823	2.474	80- 90	7.469	1162	97.4,97.4
100	2.356	2.231	2.309	2.740	3.183	3.310	3.241	2.903	90-100	2.709	1165	97.7,97.7
110	3.269	3.157	3.240	3.661	4.088	4.192	4.108	3.783	100-110	3.410	1168	98,98
120	4.326	4.177	4.244	4.686	5.131	5.195	5.078	4.779	110-120	4.157	1173	98.3,98.3
130	5.353	5.221	5.289	5.707	6.122	6.155	6.021	5.750	120-130	4.670	1177	98.7,98.7
140	6.196	6.098	6.169	6.540	6.901	6.914	6.780	6.540	130-140	4.732	1182	99.1,99.1
150	6.873	6.884	6.977	7.223	7.447	7.455	7.356	7.158	140-150	4.308	1186	99.5,99.5
160	7.431	7.479	7.558	7.699	7.825	7.860	7.822	7.670	150-160	3.436	1190	99.7,99.7
170	7.950	7.984	8.029	8.101	8.153	8.117	8.055	8.003	160-170	2.226	1192	99.9,99.9
180	8.285	8.272	8.269	8.287	8.301	8.277	8.254	8.261	170-180	0.7781	1193	100,100
DEG	LUMINOUS INTENSITY:cd									UNIT:lm		

C Range: 0 - 360DEG
C Interval: 30.0DEG
Test Speed: HIGH
Temperature:25.3DEG
Operators:DAMIN
Test Date:2022-04-24

γ Range: 0 - 180DEG
 γ Interval: 1.0DEG
Test System:EVERFINE GO-2000A_V1 SYSTEM V2.00.443
Humidity:65.0%
Test Distance:8.000m [K=0.7063]
Remarks:

LUMINANCE LIMITATION CURVES

Test:U:220.50V I:0.1060A P:12.100W PF:0.5200 Freq:50.00Hz		
Lamp Flux:1192.72x1 lm		
Name: NS11-φ140MM-12W	Type: LED	
MFR.: Lumega Group	DIM.: D140*H55mm	
	SUR.: D100mm	



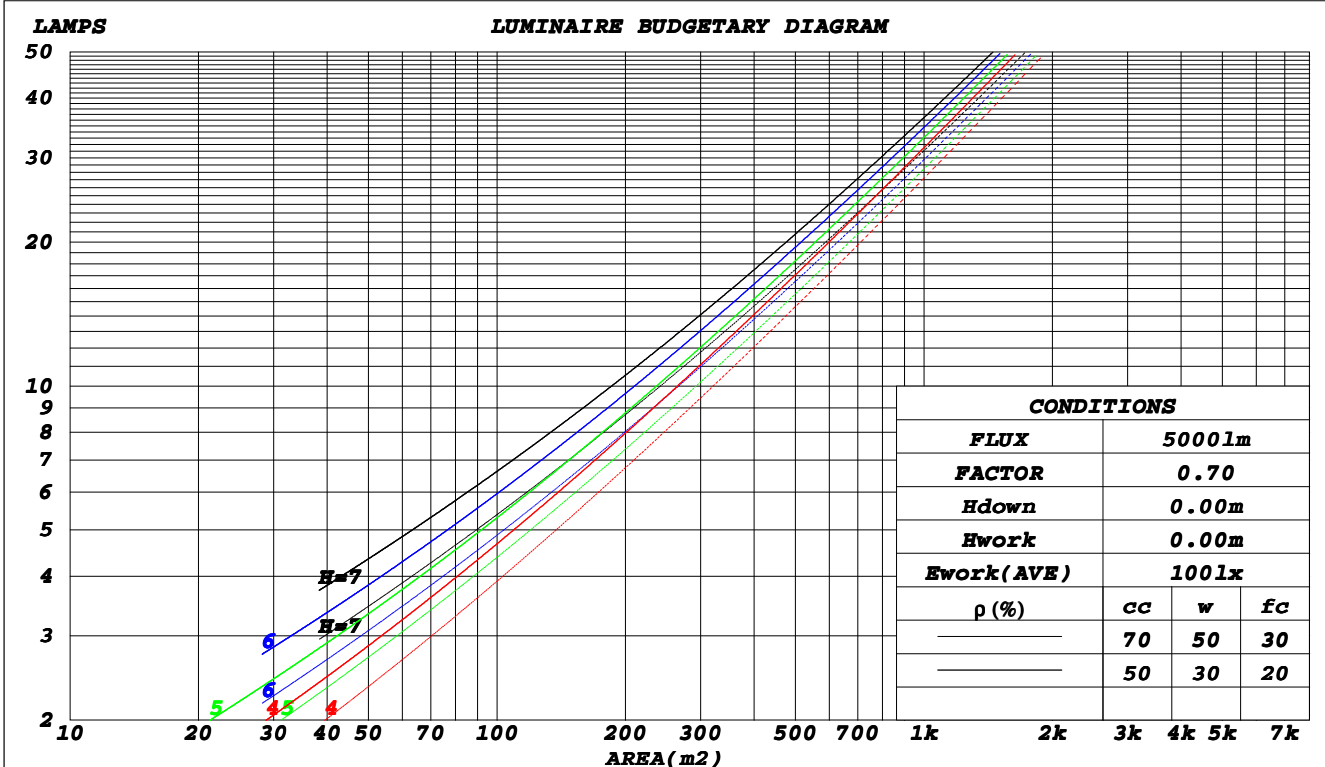
C Range: 0 - 360DEG
C Interval: 30.0DEG
Test Speed: HIGH
Temperature: 25.3DEG
Operators: DAMIN
Test Date: 2022-04-24

γ Range: 0 - 180DEG
γ Interval: 1.0DEG
Test System: EVERFINE GO-2000A_V1 SYSTEM V2.00.443
Humidity: 65.0%
Test Distance: 8.000m [K=0.7063]
Remarks:

CU AND LUMINAIRE BUDGETARY ESTIMATE DIAGRAM

Test:U:220.50V I:0.1060A P:12.100W PF:0.5200 Freq:50.00Hz		
Lamp Flux:1192.72x1 lm		
Name: NS11-φ140MM-12W	Type: LED	
MFR.: Lumega Group	DIM.: D140*H55mm	
	SUR.: D100mm	

ρ _{cc}	80%			70%			50%			30%			10%			0
ρ _w	50%	30%	10%	50%	30%	10%	50%	30%	10%	50%	30%	10%	50%	30%	10%	0
ρ _{fc}	20%			20%			20%			20%			20%			0
RCR	RCR:Room Cavity Ratio						Coefficients of Utilization(CU)									
0.0	1.18	1.18	1.18	1.15	1.15	1.15	1.10	1.10	1.10	1.04	1.04	1.04	.00	.00	.00	.97
1.0	1.05	1.02	.98	1.03	.99	.96	.98	.95	.93	.94	.92	.90	.90	.88	.87	.84
2.0	.93	.87	.82	.91	.85	.81	.87	.82	.78	.84	.80	.76	.80	.77	.74	.72
3.0	.83	.75	.69	.81	.74	.68	.78	.72	.67	.75	.70	.65	.72	.68	.64	.62
4.0	.74	.66	.59	.72	.65	.59	.70	.63	.58	.67	.61	.57	.65	.60	.56	.54
5.0	.66	.58	.52	.65	.57	.51	.63	.56	.51	.61	.55	.50	.58	.53	.49	.47
6.0	.60	.52	.46	.59	.51	.45	.57	.50	.45	.55	.49	.44	.53	.48	.44	.42
7.0	.55	.46	.41	.54	.46	.40	.52	.45	.40	.50	.44	.39	.49	.43	.39	.37
8.0	.50	.42	.36	.49	.42	.36	.48	.41	.36	.46	.40	.35	.45	.39	.35	.33
9.0	.46	.38	.33	.45	.38	.33	.44	.37	.32	.43	.37	.32	.42	.36	.32	.30
10.0	.43	.35	.30	.42	.35	.30	.41	.34	.30	.40	.34	.29	.39	.33	.29	.27



C Range: 0 - 360DEG
 C Interval: 30.0DEG
 Test Speed: HIGH
 Temperature: 25.3DEG
 Operators: DAMIN
 Test Date: 2022-04-24

γ Range: 0 - 180DEG
 γ Interval: 1.0DEG
 Test System: EVERFINE GO-2000A_V1 SYSTEM V2.00.443
 Humidity: 65.0%
 Test Distance: 8.000m [K=0.7063]
 Remarks:

WEC AND CCEC

Test:U:220.50V I:0.1060A P:12.100W PF:0.5200 Freq:50.00Hz		
Lamp Flux:1192.72x1 lm		
Name: NS11-φ140MM-12W	Type: LED	
MFR.: Lumega Group	DIM.: D140*H55mm	
	SUR.: D100mm	

ρ _{cc}	80%			70%			50%			30%			10%			0
ρ _w	50%	30%	10%	50%	30%	10%	50%	30%	10%	50%	30%	10%	50%	30%	10%	0
ρ _{fc}	20%			20%			20%			20%			20%			0
RCR	RCR:Room Cavity Ratio						Wall Exitance Coefficients(WEC)									
0.0																
1.0	.270	.154	.049	.263	.150	.048	.248	.142	.045	.235	.135	.043	.223	.129	.042	
2.0	.261	.143	.044	.254	.140	.043	.241	.134	.042	.229	.129	.040	.219	.124	.039	
3.0	.245	.131	.039	.239	.128	.039	.228	.124	.038	.218	.119	.037	.208	.115	.036	
4.0	.229	.119	.035	.224	.117	.035	.214	.113	.034	.205	.110	.033	.196	.106	.032	
5.0	.214	.109	.032	.209	.107	.031	.200	.104	.031	.192	.101	.030	.184	.098	.030	
6.0	.200	.100	.029	.196	.099	.028	.188	.096	.028	.180	.094	.028	.173	.091	.027	
7.0	.187	.093	.026	.184	.092	.026	.176	.089	.026	.170	.087	.025	.163	.085	.025	
8.0	.176	.086	.024	.173	.085	.024	.166	.083	.024	.160	.081	.023	.154	.079	.023	
9.0	.166	.080	.022	.163	.079	.022	.157	.077	.022	.151	.076	.022	.146	.074	.021	
10.0	.156	.075	.021	.154	.074	.021	.148	.073	.020	.143	.071	.020	.138	.070	.020	

ρ _{cc}	80%			70%			50%			30%			10%			0
ρ _w	50%	30%	10%	50%	30%	10%	50%	30%	10%	50%	30%	10%	50%	30%	10%	0
ρ _{fc}	20%			20%			20%			20%			20%			0
RCR	RCR:Room Cavity Ratio						Ceiling Cavity Exitance Coefficients(CCEC)									
0.0	.210	.210	.210	.179	.179	.179	.122	.122	.122	.070	.070	.070	.022	.022	.022	
1.0	.197	.176	.157	.169	.151	.135	.115	.104	.093	.066	.060	.054	.021	.019	.018	
2.0	.188	.152	.121	.161	.131	.105	.110	.090	.073	.064	.053	.043	.020	.017	.014	
3.0	.180	.134	.098	.154	.116	.085	.106	.080	.059	.061	.047	.035	.020	.015	.011	
4.0	.172	.120	.081	.147	.104	.071	.101	.073	.050	.059	.042	.029	.019	.014	.010	
5.0	.165	.110	.070	.141	.095	.061	.097	.066	.043	.056	.039	.025	.018	.013	.008	
6.0	.158	.101	.061	.136	.088	.053	.094	.062	.038	.054	.036	.022	.018	.012	.007	
7.0	.151	.095	.055	.130	.082	.048	.090	.057	.034	.052	.034	.020	.017	.011	.007	
8.0	.145	.089	.050	.125	.077	.044	.086	.054	.031	.050	.032	.018	.016	.010	.006	
9.0	.139	.084	.046	.120	.073	.040	.083	.051	.029	.048	.030	.017	.016	.010	.006	
10.0	.134	.080	.043	.115	.069	.038	.080	.049	.027	.047	.029	.016	.015	.009	.005	

C Range: 0 - 360DEG
C Interval: 30.0DEG
Test Speed: HIGH
Temperature:25.3DEG
Operators:DAMIN
Test Date:2022-04-24

γ Range: 0 - 180DEG
γ Interval: 1.0DEG
Test System:EVERFINE GO-2000A_V1 SYSTEM V2.00.443
Humidity:65.0%
Test Distance:8.000m [K=0.7063]
Remarks:

UGR(Unified Glare Rating) Table

Test:U:220.50V I:0.1060A P:12.100W PF:0.5200 Freq:50.00Hz		
Lamp Flux:1192.72x1 lm		
Name: NS11-φ140MM-12W	Type: LED	
MFR.: Lumega Group	DIM.: D140*H55mm	
	SUR.: D100mm	

ceiling/cavity	0.7	0.7	0.5	0.5	0.3	0.7	0.7	0.5	0.5	0.3
walls	0.5	0.3	0.5	0.3	0.3	0.5	0.3	0.5	0.3	0.3
working plane	0.2	0.2	0.2	0.2	0.2	0.2	0.2	0.2	0.2	0.2
Room dimensions	Viewed crosswise					Viewed endwise				
x = 2H y = 2H	25.6	27.0	25.9	27.2	27.5	25.5	26.8	25.8	27.1	27.3
3H	26.6	27.9	26.9	28.2	28.4	26.3	27.6	26.6	27.8	28.1
4H	26.9	28.1	27.3	28.4	28.7	26.5	27.7	26.8	28.0	28.3
6H	27.0	28.1	27.4	28.4	28.8	26.5	27.6	26.9	27.9	28.3
8H	27.0	28.1	27.3	28.4	28.7	26.5	27.6	26.9	27.9	28.2
12H	26.9	28.0	27.3	28.3	28.7	26.5	27.5	26.8	27.8	28.2
4H 2H	26.0	27.2	26.3	27.5	27.8	25.9	27.1	26.2	27.4	27.7
3H	27.1	28.2	27.5	28.5	28.9	26.8	27.9	27.2	28.2	28.6
4H	27.5	28.4	27.9	28.8	29.2	27.1	28.0	27.5	28.4	28.8
6H	27.6	28.5	28.1	28.9	29.3	27.2	28.0	27.6	28.4	28.8
8H	27.6	28.4	28.1	28.8	29.3	27.2	27.9	27.6	28.3	28.8
12H	27.6	28.3	28.1	28.7	29.2	27.1	27.9	27.6	28.3	28.7
8H 4H	27.5	28.3	28.0	28.7	29.2	27.1	27.9	27.6	28.3	28.8
6H	27.7	28.4	28.2	28.8	29.3	27.3	27.9	27.8	28.4	28.8
8H	27.7	28.3	28.2	28.8	29.3	27.3	27.9	27.8	28.3	28.8
12H	27.7	28.2	28.2	28.7	29.2	27.3	27.8	27.8	28.3	28.8
12H 4H	27.5	28.2	28.0	28.6	29.1	27.1	27.8	27.6	28.3	28.7
6H	27.7	28.3	28.2	28.7	29.2	27.3	27.8	27.8	28.3	28.8
8H	27.7	28.2	28.2	28.7	29.2	27.3	27.8	27.8	28.3	28.8
Variations with the observer position at spacings(CIE Pub.117):										
S = 1.0H	+ 0.3 / - 0.4					+ 0.3 / - 0.4				
1.5H	+ 0.2 / - 0.3					+ 0.2 / - 0.4				
2.0H	+ 0.5 / - 0.5					+ 0.6 / - 0.5				

CIE Pub.117, 1193 lm Total Lamp Luminous Flux Corrected ($8\log(F/F_0) = 0.6$)
 Area: 0.008 m²

C Range: 0 - 360DEG
C Interval: 30.0DEG
Test Speed: HIGH
Temperature:25.3DEG
Operators:DAMIN
Test Date:2022-04-24

γ Range: 0 - 180DEG
γ Interval: 1.0DEG
Test System:EVERFINE GO-2000A_V1 SYSTEM V2.00.443
Humidity:65.0%
Test Distance:8.000m [K=0.7063]
Remarks:

UTILIZATION FACTORS TABLE

Test:U:220.50V I:0.1060A P:12.100W PF:0.5200 Freq:50.00Hz Lamp Flux:1192.72x1 lm		
Name: NS11-φ140MM-12W	Type: LED	
MFR.: Lumega Group	DIM.: D140*H55mm	
	SUR.: D100mm	

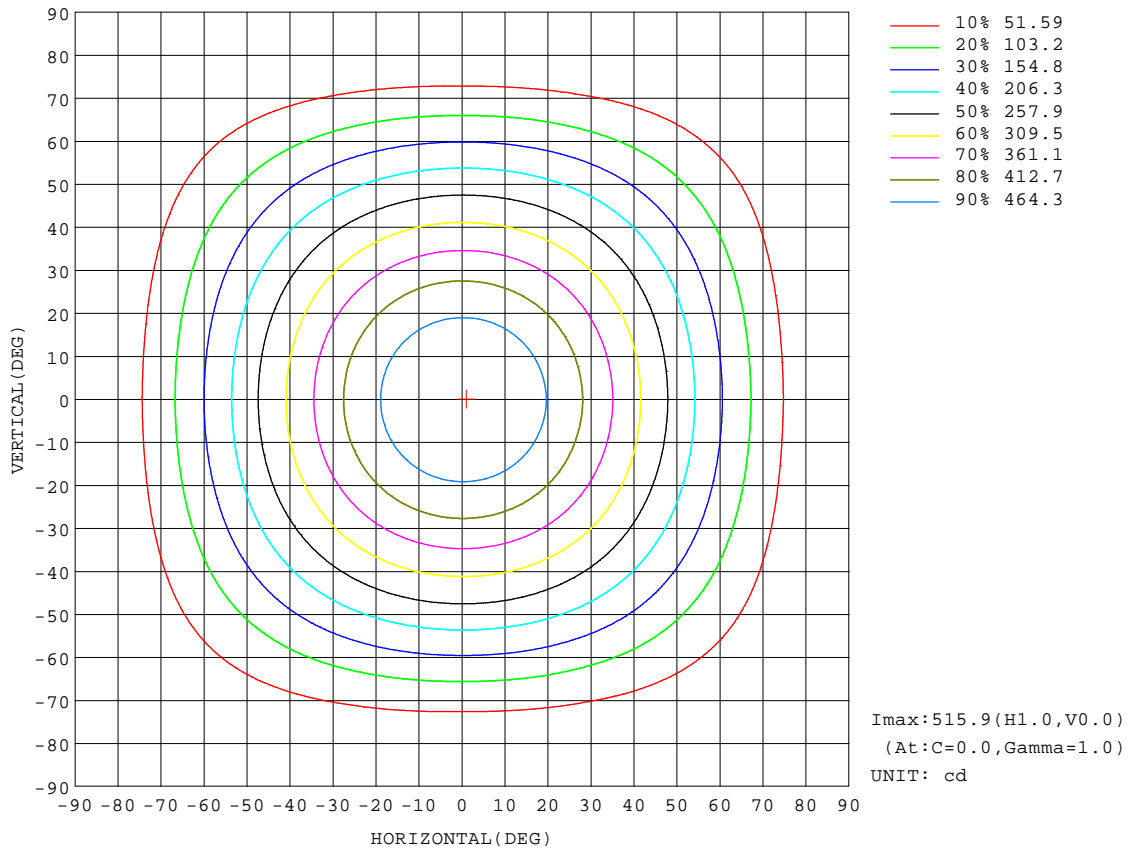
REFLECTANCE										
Ceiling	0.8	0.8	0.8	0.7	0.7	0.7	0.5	0.5	0.5	0
Walls	0.7	0.5	0.3	0.7	0.5	0.3	0.7	0.5	0.3	0
Working plane	0.2	0.2	0.2	0.2	0.2	0.2	0.2	0.2	0.2	0
ROOM INDEX	UTILIZATION FACTORS(PERCENT) $k(RI) \times RCR = 5$									
k = 0.60	61	50	43	60	50	43	59	49	43	37
0.80	71	60	53	70	60	53	68	59	53	46
1.00	79	69	62	78	68	62	76	69	61	55
1.25	86	77	70	85	76	70	82	74	69	62
1.50	91	82	76	89	81	75	86	79	74	67
2.00	97	90	84	95	88	83	92	86	81	73
2.50	101	94	88	99	92	87	95	89	85	77
3.00	104	98	93	102	96	92	97	93	89	80
4.00	107	102	98	105	100	97	100	97	94	84
5.00	109	105	102	107	103	100	102	99	96	87
ROOM INDEX	UF(total)									Direct
According to DIN EN 13032-2 2004			Suspended					SHRNOM = 1.25		

C Range: 0 - 360DEG
C Interval: 30.0DEG
Test Speed: HIGH
Temperature:25.3DEG
Operators:DAMIN
Test Date:2022-04-24

γ Range: 0 - 180DEG
γ Interval: 1.0DEG
Test System:EVERFINE GO-2000A_V1 SYSTEM V2.00.443
Humidity:65.0%
Test Distance:8.000m [K=0.7063]
Remarks:

ISOCANDELA DIAGRAM

Test:U:220.50V I:0.1060A P:12.100W PF:0.5200 Freq:50.00Hz		
Lamp Flux:1192.72x1 lm		
Name: NS11-φ140MM-12W	Type: LED	
MFR.: Lumega Group	DIM.: D140*H55mm	
	SUR.: D100mm	



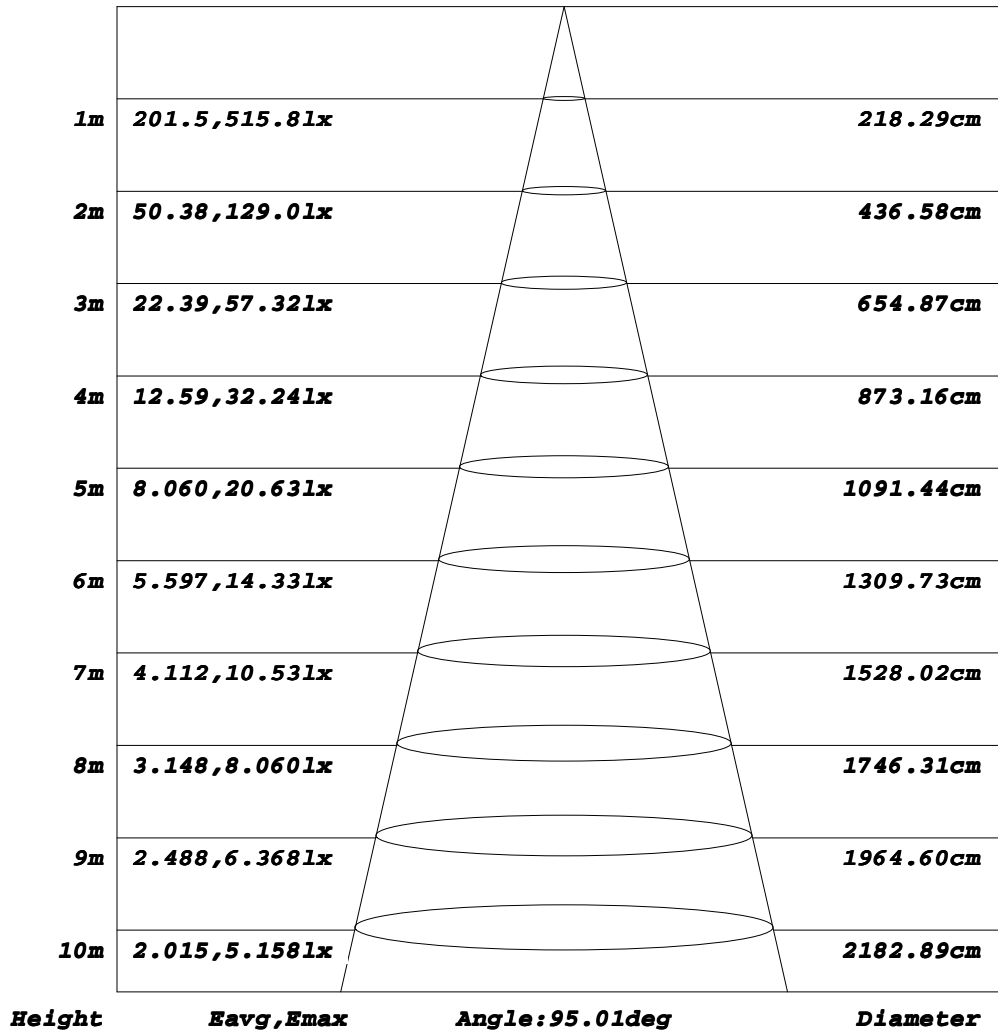
C Range: 0 - 360DEG
C Interval: 30.0DEG
Test Speed: HIGH
Temperature: 25.3DEG
Operators: DAMIN
Test Date: 2022-04-24

γ Range: 0 - 180DEG
γ Interval: 1.0DEG
Test System: EVERFINE GO-2000A_V1 SYSTEM V2.00.443
Humidity: 65.0%
Test Distance: 8.000m [K=0.7063]
Remarks:

AAI Figure

Test:U:220.50V I:0.1060A P:12.100W PF:0.5200 Freq:50.00Hz		
Lamp Flux:1192.72x1 lm		
Name: NS11-φ140MM-12W	Type: LED	
MFR.: Lumega Group	DIM.: D140*H55mm	
	SUR.: D100mm	

Flux out:780.8 lm



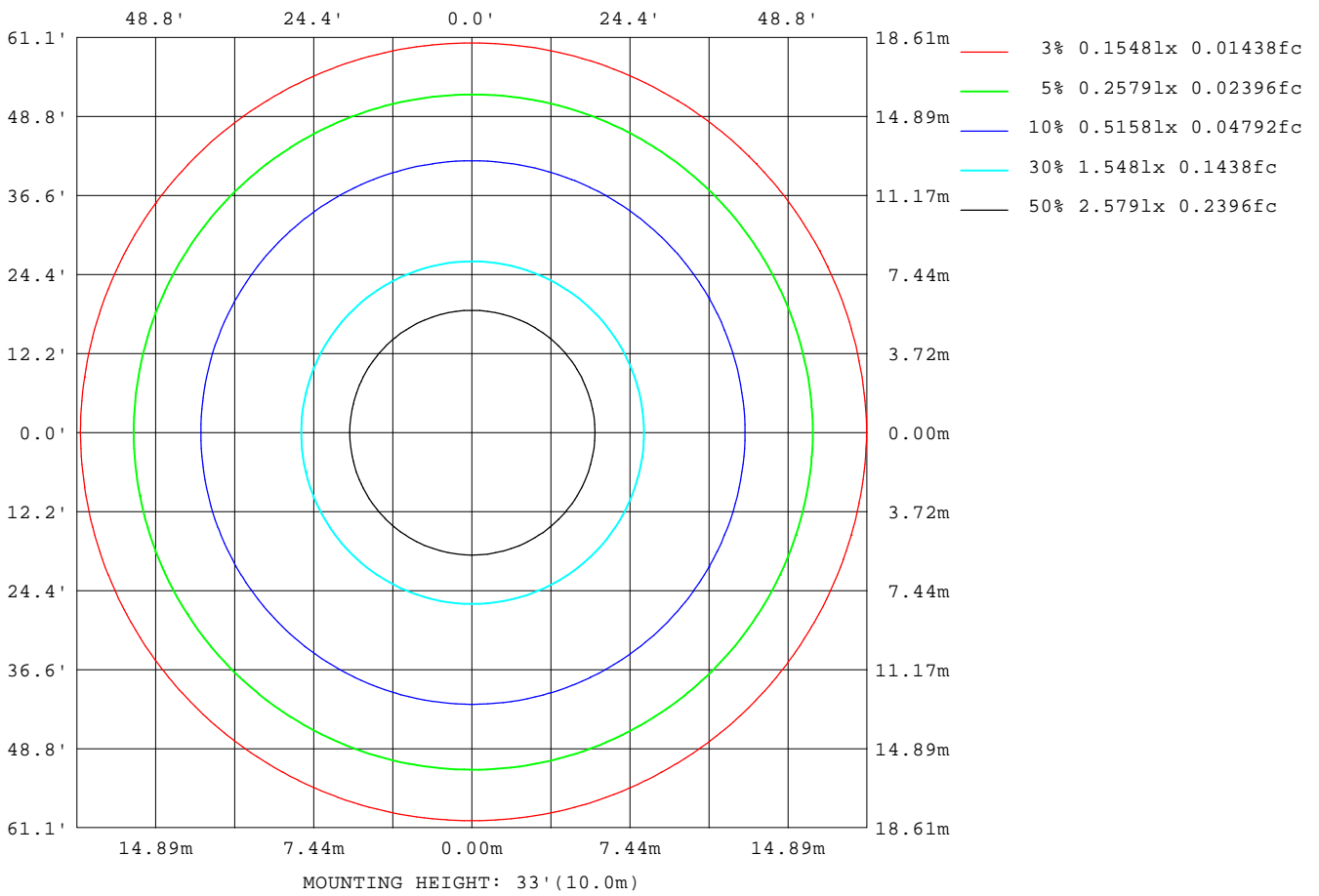
Note: The Curves indicate the illuminated area and the average illumination when the luminaire is at different distance.

C Range: 0 - 360DEG
C Interval: 30.0DEG
Test Speed: HIGH
Temperature: 25.3DEG
Operators: DAMIN
Test Date: 2022-04-24

γ Range: 0 - 180DEG
γ Interval: 1.0DEG
Test System: EVERFINE GO-2000A_V1 SYSTEM V2.00.443
Humidity: 65.0%
Test Distance: 8.000m [K=0.7063]
Remarks:

ISOLUX DIAGRAM

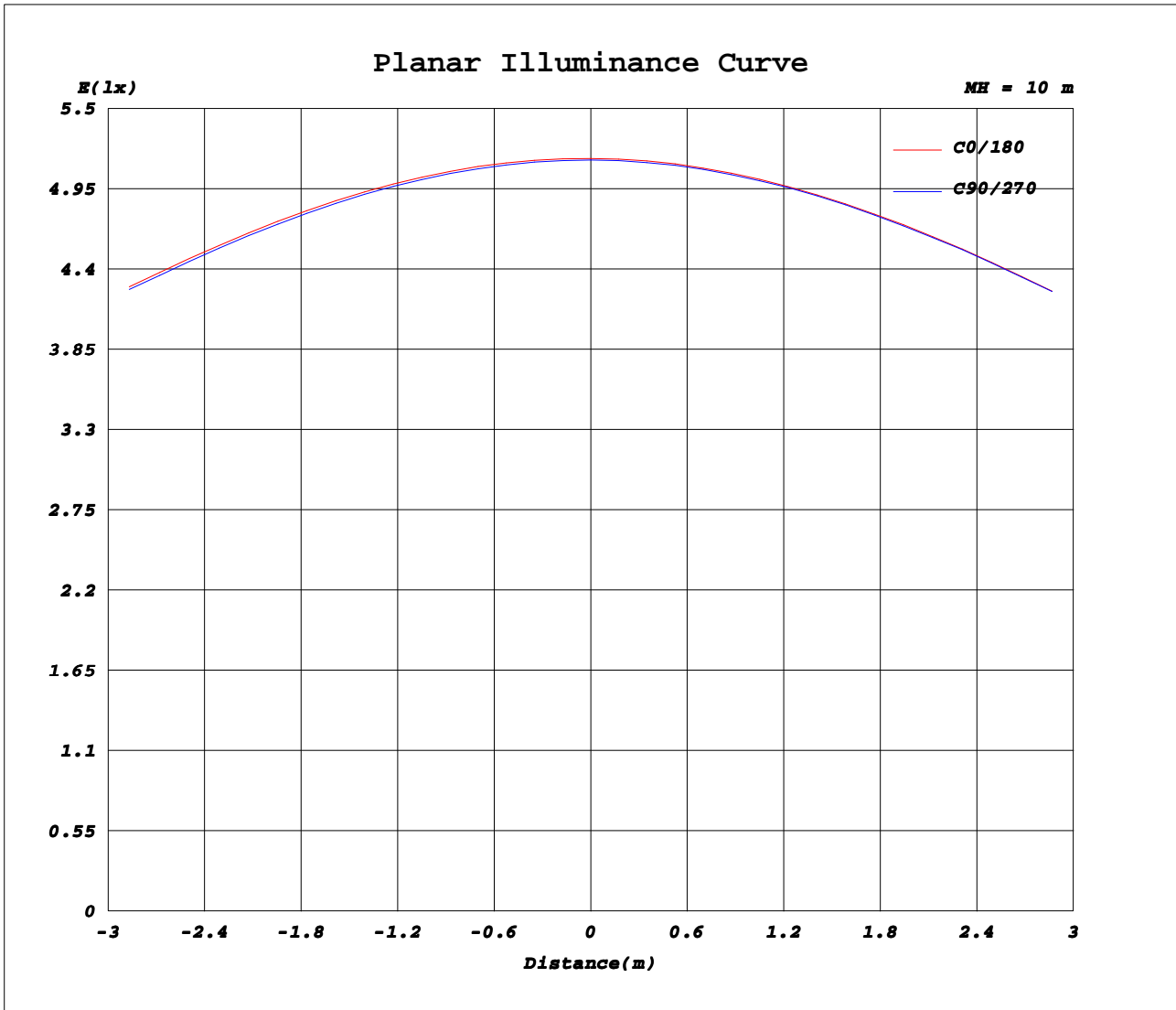
Test:U:220.50V I:0.1060A P:12.100W PF:0.5200 Freq:50.00Hz		
Lamp Flux:1192.72x1 lm		
Name: NS11-φ140MM-12W	Type: LED	
MFR.: Lumega Group	DIM.: D140*H55mm	
	SUR.: D100mm	



C Range: 0 - 360DEG
C Interval: 30.0DEG
Test Speed: HIGH
Temperature: 25.3DEG
Operators: DAMIN
Test Date: 2022-04-24

γ Range: 0 - 180DEG
γ Interval: 1.0DEG
Test System: EVERFINE GO-2000A_V1 SYSTEM V2.00.443
Humidity: 65.0%
Test Distance: 8.000m [K=0.7063]
Remarks:

Planar Illuminance Curve



C Range: 0 - 360DEG
C Interval: 30.0DEG
Test Speed: HIGH
Temperature: 25.3DEG
Operators: DAMIN
Test Date: 2022-04-24

γ Range: 0 - 180DEG
γ Interval: 1.0DEG
Test System: EVERFINE GO-2000A_V1 SYSTEM V2.00.443
Humidity: 65.0%
Test Distance: 8.000m [K=0.7063]
Remarks:

LUMINOUS DISTRIBUTION INTENSITY DATA

Test:U:220.50V I:0.1060A P:12.100W PF:0.5200 Freq:50.00Hz		
Lamp Flux:1192.72x1 lm		
Name: NS11-φ140MM-12W	Type: LED	
MFR.: Lumega Group	DIM.: D140*H55mm	
	SUR.: D100mm	

Table--1

UNIT: cd

C (DEG) \ γ (DEG)	0	30	60	90	120	150	180	210	240	270	300	330							
0	516	515	515	515	515	516	516	516	515	515	515	515							
5	513	512	512	511	511	511	512	511	511	511	511	511							
10	503	502	501	501	501	500	500	500	499	499	500	501							
15	486	485	484	484	483	483	483	482	482	482	483	484							
20	463	462	461	460	459	459	458	458	458	459	460	461							
25	433	432	432	431	430	430	429	429	429	429	430	432							
30	399	398	397	397	396	395	395	395	395	395	396	397							
35	362	361	360	359	358	357	357	357	357	358	359	360							
40	322	322	321	320	318	317	317	317	317	318	319	321							
45	281	280	280	279	278	278	277	277	277	278	278	280							
50	241	240	239	238	237	236	236	236	236	237	238	239							
55	200	198	196	195	194	194	194	195	195	195	197	198							
60	159	155	153	151	152	153	155	154	153	153	154	156							
65	120	114	110	108	110	113	116	114	112	111	112	115							
70	83.0	75.8	71.2	69.3	72.1	76.0	79.5	76.9	73.6	71.2	72.9	76.9							
75	50.1	43.3	39.0	37.4	40.5	44.6	48.0	44.9	41.2	38.2	39.8	43.7							
80	18.3	16.7	15.9	15.9	17.7	19.6	21.1	19.8	18.0	16.4	16.3	16.9							
85	4.88	5.21	5.44	5.57	5.54	5.47	5.42	5.65	5.88	6.00	5.82	5.44							
90	1.88	1.68	1.61	1.67	1.97	2.32	2.65	2.82	2.88	2.82	2.63	2.32							
95	1.97	1.96	2.01	2.13	2.35	2.60	2.82	2.95	2.99	2.93	2.73	2.41							
100	2.36	2.24	2.22	2.31	2.58	2.90	3.18	3.30	3.32	3.24	3.05	2.76							
105	2.80	2.69	2.67	2.75	3.03	3.33	3.61	3.72	3.74	3.66	3.47	3.19							
110	3.27	3.16	3.15	3.24	3.51	3.81	4.09	4.19	4.20	4.11	3.92	3.64							
115	3.80	3.67	3.65	3.74	4.01	4.32	4.60	4.69	4.68	4.59	4.41	4.15							
120	4.33	4.19	4.16	4.24	4.53	4.85	5.13	5.21	5.18	5.08	4.90	4.65							
125	4.84	4.73	4.71	4.80	5.07	5.38	5.64	5.71	5.67	5.56	5.39	5.15							
130	5.35	5.23	5.21	5.29	5.56	5.86	6.12	6.17	6.14	6.02	5.86	5.64							
135	5.79	5.69	5.68	5.76	6.01	6.29	6.53	6.57	6.52	6.40	6.25	6.05							
140	6.20	6.10	6.09	6.17	6.41	6.67	6.90	6.94	6.89	6.78	6.64	6.44							
145	6.56	6.51	6.52	6.60	6.80	7.02	7.21	7.25	7.22	7.12	6.99	6.80							
150	6.87	6.87	6.90	6.98	7.14	7.31	7.45	7.47	7.44	7.36	7.24	7.08							
155	7.16	7.17	7.20	7.27	7.41	7.54	7.66	7.71	7.71	7.65	7.54	7.38							
160	7.43	7.46	7.50	7.56	7.65	7.75	7.82	7.86	7.86	7.82	7.74	7.60							
165	7.71	7.74	7.78	7.82	7.88	7.94	7.99	8.01	8.00	7.97	7.91	7.82							
170	7.95	7.97	8.00	8.03	8.08	8.12	8.15	8.13	8.10	8.06	8.02	7.99							
175	8.17	8.17	8.17	8.19	8.22	8.26	8.28	8.25	8.21	8.17	8.16	8.16							
180	8.28	8.27	8.27	8.27	8.28	8.29	8.30	8.29	8.27	8.25	8.26	8.27							

C Range: 0 - 360DEG
C Interval: 30.0DEG
Test Speed: HIGH
Temperature:25.3DEG
Operators:DAMIN
Test Date:2022-04-24

γ Range: 0 - 180DEG
γ Interval: 1.0DEG
Test System:EVERFINE GO-2000A_V1 SYSTEM V2.00.443
Humidity:65.0%
Test Distance:8.000m [K=0.7063]
Remarks: