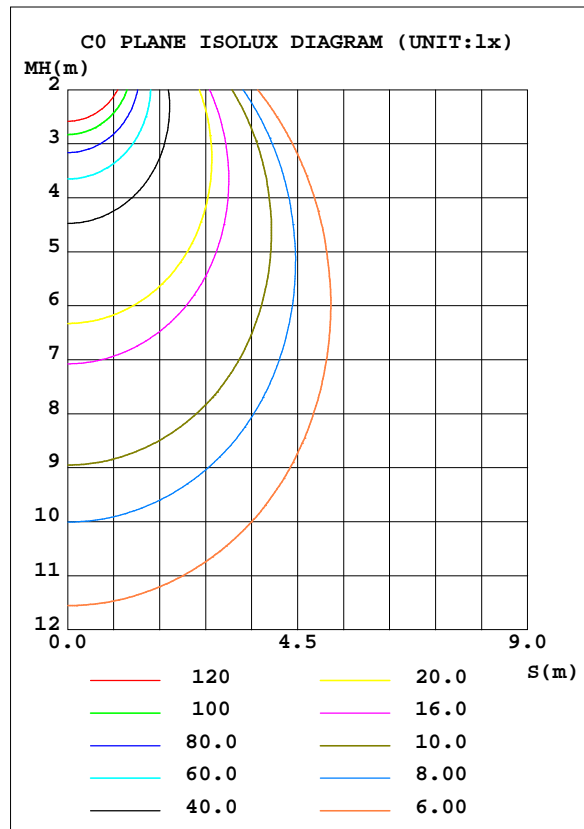
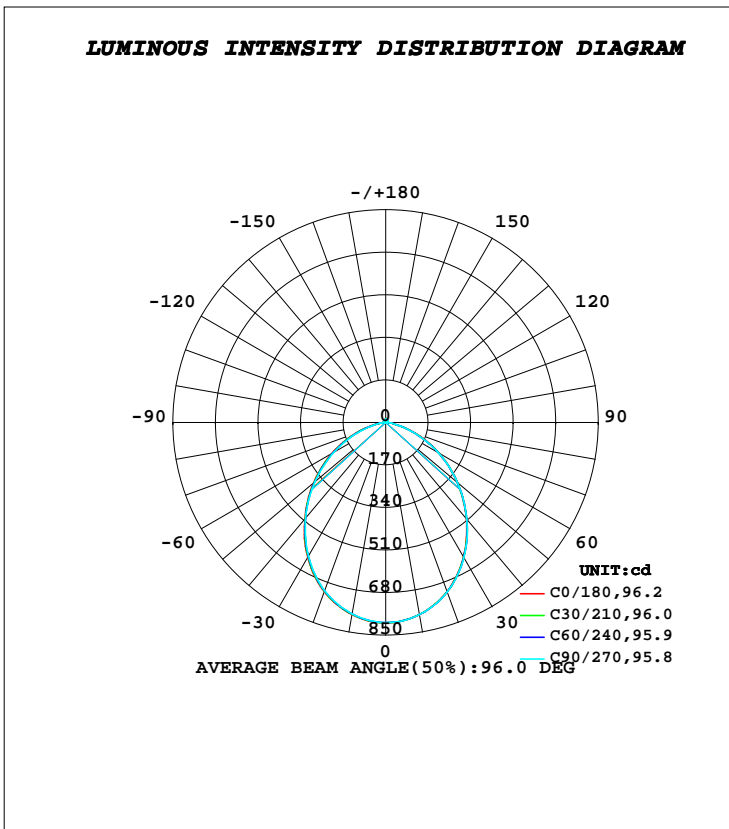


**LUMINAIRE PHOTOMETRIC TEST REPORT**

Test:U:220.50V I:0.0890A P:18.000W PF:0.9160 Freq:50.00Hz		
Lamp Flux:1879.63x1 lm		
Name: NS11-φ230MM-18W	Type: LED	
MFR.: Lumega Group	DIM.: D230*H90mm	
	SUR.: D180mm	

DATA OF LAMP		PHOTOMETRIC DATA Eff: 104.42 lm/W			
MODEL		I <sub>max</sub> (cd)	801.0	S/MH(C0/180)	1.16
NOMINAL POWER(W)	18	LOR(%)	100.0	S/MH(C90/270)	1.17
RATED VOLTAGE(V)	220	TOTAL FLUX(lm)	1879.6	η UP, DN(C0-180)	1.2, 48.9
NOMINAL FLUX(lm)	1879.63	CIE CLASS	DIRECT	η UP, DN(C180-360)	1.3, 48.6
LAMPS INSIDE	1	η up(%)	2.5	CIBSE SHR NOM	1.25
TEST VOLTAGE(V)	220	η down(%)	97.5	CIBSE SHR MAX	1.30



**C Range: 0 - 360DEG**  
**C Interval: 30.0DEG**  
**Test Speed: HIGH**  
**Temperature: 25.3DEG**  
**Operators: DAMIN**  
**Test Date: 2022-04-24**

**γ Range: 0 - 180DEG**  
**γ Interval: 1.0DEG**  
**Test System: EVERFINE GO-2000A\_V1 SYSTEM V2.00.443**  
**Humidity: 65.0%**  
**Test Distance: 8.000m [K=0.7063]**  
**Remarks:**

**ZONAL FLUX DIAGRAM**

**ZONAL FLUX DIAGRAM:**

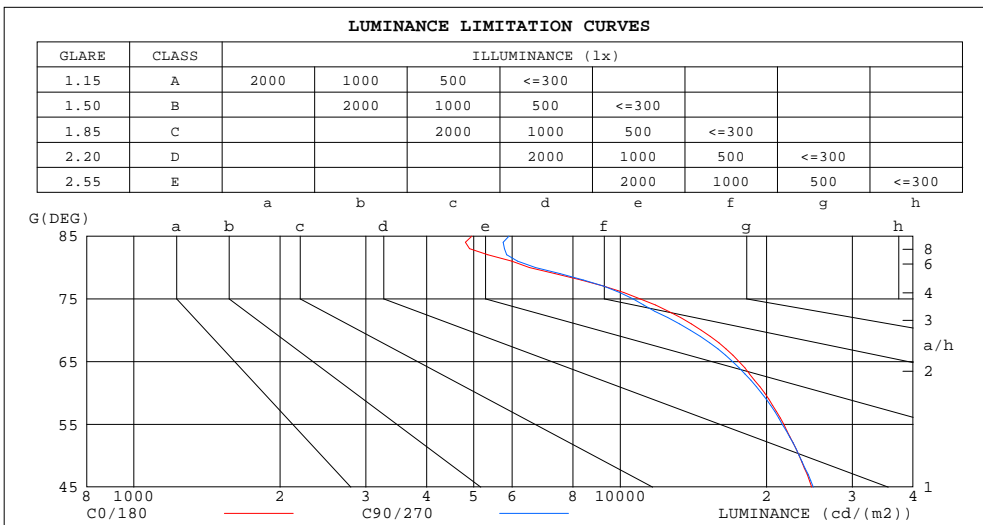
$\gamma$	C0	C45	C90	C135	C180	C225	C270	C315	$\gamma$	$\Phi$ zone	$\Phi$ total	%lum,lamp
10	779.2	779.5	779.7	779.9	779.6	777.7	776.2	777.0	0- 10	75.35	75.35	4.01,4.01
20	718.9	720.0	720.5	720.3	719.5	717.0	715.0	716.0	10- 20	212.1	287.5	15.3,15.3
30	621.6	623.6	624.6	624.5	623.4	620.0	617.2	618.2	20- 30	309.9	597.4	31.8,31.8
40	502.1	503.9	504.6	503.8	502.2	499.6	497.7	498.9	30- 40	352.2	949.6	50.5,50.5
50	374.8	374.7	375.0	376.5	377.0	372.9	369.2	370.5	40- 50	337.9	1288	68.5,68.5
60	247.6	244.9	244.1	247.0	249.2	244.0	239.1	241.3	50- 60	276.0	1563	83.2,83.2
70	125.5	120.6	119.2	124.5	129.0	122.6	116.1	118.3	60- 70	180.0	1743	92.8,92.8
80	28.23	28.44	29.08	30.73	31.83	29.89	27.71	27.45	70- 80	75.00	1818	96.7,96.7
90	3.055	2.774	2.904	3.776	4.609	4.518	4.119	3.651	80- 90	14.07	1833	97.5,97.5
100	3.801	3.629	3.748	4.370	5.005	5.172	5.059	4.576	90-100	4.271	1837	97.7,97.7
110	5.205	5.003	5.098	5.708	6.334	6.488	6.375	5.925	100-110	5.369	1842	98,98
120	6.761	6.525	6.604	7.227	7.863	7.975	7.828	7.409	110-120	6.465	1849	98.4,98.4
130	8.268	8.066	8.150	8.734	9.317	9.375	9.199	8.824	120-130	7.180	1856	98.7,98.7
140	9.519	9.386	9.488	10.01	10.52	10.55	10.38	10.03	130-140	7.256	1863	99.1,99.1
150	10.59	10.51	10.60	11.01	11.39	11.40	11.24	10.97	140-150	6.584	1870	99.5,99.5
160	11.59	11.64	11.74	11.92	12.08	12.10	12.04	11.86	150-160	5.285	1875	99.8,99.8
170	12.39	12.49	12.56	12.61	12.63	12.63	12.59	12.51	160-170	3.458	1878	99.9,99.9
180	12.98	12.90	12.87	12.93	12.99	12.92	12.86	12.89	170-180	1.214	1880	100,100
DEG	LUMINOUS INTENSITY:cd									UNIT:lm		

**C Range: 0 - 360DEG**  
**C Interval: 30.0DEG**  
**Test Speed: HIGH**  
**Temperature:25.3DEG**  
**Operators:DAMIN**  
**Test Date:2022-04-24**

**$\gamma$  Range: 0 - 180DEG**  
 **$\gamma$  Interval: 1.0DEG**  
**Test System:EVERFINE GO-2000A\_V1 SYSTEM V2.00.443**  
**Humidity:65.0%**  
**Test Distance:8.000m [K=0.7063]**  
**Remarks:**

**LUMINANCE LIMITATION CURVES**

Test:U:220.50V I:0.0890A P:18.000W PF:0.9160 Freq:50.00Hz		
Lamp Flux:1879.63x1 lm		
Name: NS11-φ230MM-18W	Type: LED	
MFR.: Lumega Group	DIM.: D230*H90mm	
	SUR.: D180mm	



LUMINANCE cd/(m2)		
G(DEG)	C0/180	C90/270
85	4953	5903
80	6503	6698
75	10994	10635
70	14677	13944
65	17568	17022
60	19810	19526
55	21690	21547
50	23325	23337
45	24751	24934

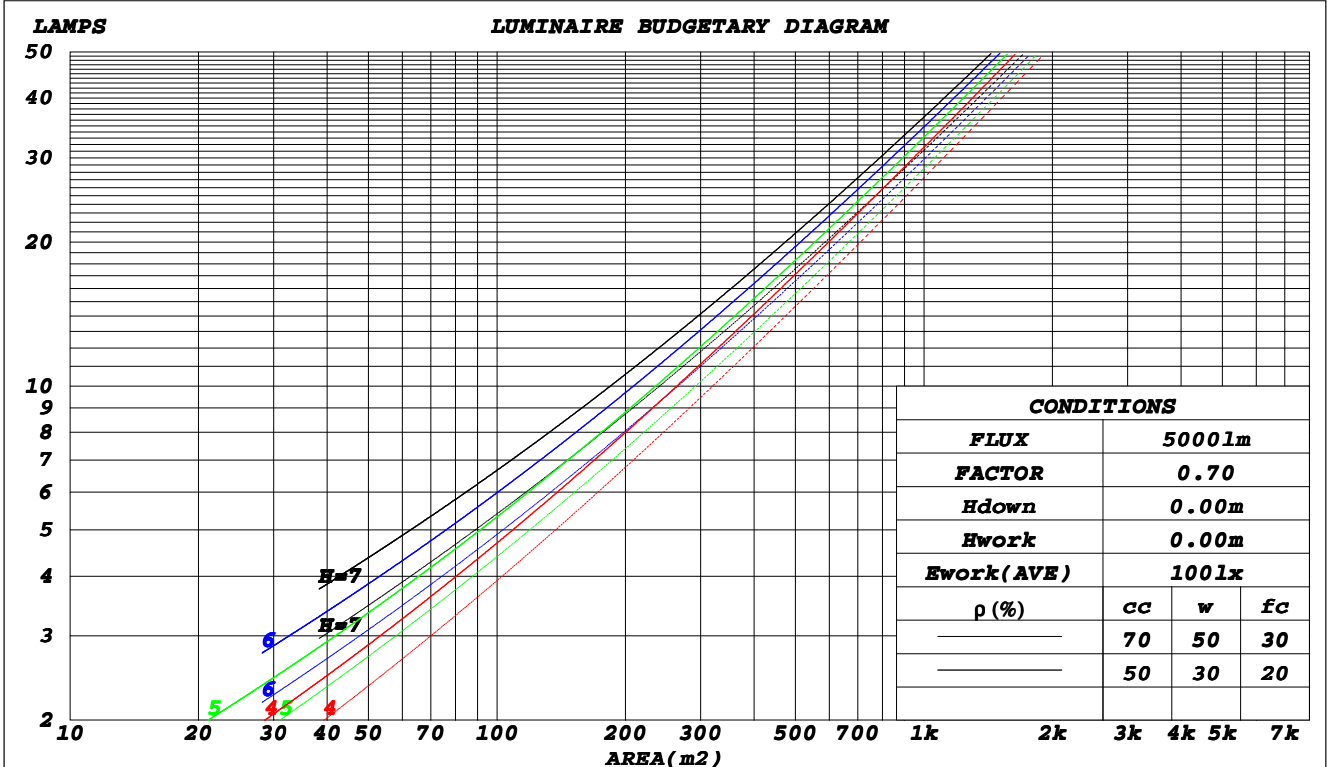
**C Range: 0 - 360DEG**  
**C Interval: 30.0DEG**  
**Test Speed: HIGH**  
**Temperature: 25.3DEG**  
**Operators: DAMIN**  
**Test Date: 2022-04-24**

**γ Range: 0 - 180DEG**  
**γ Interval: 1.0DEG**  
**Test System: EVERFINE GO-2000A\_V1 SYSTEM V2.00.443**  
**Humidity: 65.0%**  
**Test Distance: 8.000m [K=0.7063]**  
**Remarks:**

**CU AND LUMINAIRE BUDGETARY ESTIMATE DIAGRAM**

Test:U:220.50V I:0.0890A P:18.000W PF:0.9160 Freq:50.00Hz		
Lamp Flux:1879.63x1 lm		
Name: NS11-φ230MM-18W	Type: LED	
MFR.: Lumega Group	DIM.: D230*H90mm	
	SUR.: D180mm	

ρcc	80%			70%			50%			30%			10%			0
ρw	50%	30%	10%	50%	30%	10%	50%	30%	10%	50%	30%	10%	50%	30%	10%	0
ρfc	20%			20%			20%			20%			20%			0
<b>RCR</b>	<b>RCR:Room Cavity Ratio</b>						<b>Coefficients of Utilization(CU)</b>									
0.0	1.18	1.18	1.18	1.15	1.15	1.15	1.10	1.10	1.10	1.05	1.05	1.05	.00	.00	.00	.97
1.0	1.05	1.01	.98	1.03	.99	.96	.98	.95	.93	.94	.92	.89	.90	.88	.86	.84
2.0	.93	.87	.81	.91	.85	.80	.87	.82	.78	.83	.79	.76	.80	.77	.74	.72
3.0	.82	.75	.69	.81	.74	.68	.77	.71	.67	.74	.69	.65	.72	.67	.64	.62
4.0	.74	.65	.59	.72	.64	.59	.69	.63	.58	.67	.61	.57	.64	.60	.56	.53
5.0	.66	.58	.51	.65	.57	.51	.63	.56	.50	.60	.54	.50	.58	.53	.49	.47
6.0	.60	.51	.45	.59	.51	.45	.57	.50	.44	.55	.49	.44	.53	.48	.43	.41
7.0	.54	.46	.40	.54	.46	.40	.52	.45	.40	.50	.44	.39	.49	.43	.39	.37
8.0	.50	.42	.36	.49	.41	.36	.48	.41	.36	.46	.40	.35	.45	.39	.35	.33
9.0	.46	.38	.33	.45	.38	.33	.44	.37	.32	.43	.36	.32	.42	.36	.32	.30
10.0	.42	.35	.30	.42	.35	.30	.41	.34	.29	.40	.33	.29	.39	.33	.29	.27



C Range: 0 - 360DEG  
 C Interval: 30.0DEG  
 Test Speed: HIGH  
 Temperature: 25.3DEG  
 Operators: DAMIN  
 Test Date: 2022-04-24

γ Range: 0 - 180DEG  
 γ Interval: 1.0DEG  
 Test System: EVERFINE GO-2000A\_V1 SYSTEM V2.00.443  
 Humidity: 65.0%  
 Test Distance: 8.000m [K=0.7063]  
 Remarks:

**WEC AND CCEC**

Test:U:220.50V I:0.0890A P:18.000W PF:0.9160 Freq:50.00Hz		
Lamp Flux:1879.63x1 lm		
Name: NS11-φ230MM-18W	Type: LED	
MFR.: Lumega Group	DIM.: D230*H90mm	
	SUR.: D180mm	

ρ <sub>cc</sub>	80%			70%			50%			30%			10%			0
ρ <sub>w</sub>	50%	30%	10%	50%	30%	10%	50%	30%	10%	50%	30%	10%	50%	30%	10%	0
ρ <sub>fc</sub>	20%			20%			20%			20%			20%			0
<b>RCR</b>	<b>RCR:Room Cavity Ratio</b>						<b>Wall Exitance Coefficients(WEC)</b>									
0.0																
1.0	.273	.155	.049	.265	.151	.048	.251	.144	.046	.237	.137	.044	.225	.130	.042	
2.0	.263	.144	.044	.256	.141	.043	.243	.135	.042	.231	.130	.041	.220	.125	.039	
3.0	.247	.131	.039	.241	.129	.039	.229	.124	.038	.219	.120	.037	.209	.116	.036	
4.0	.230	.120	.035	.225	.118	.035	.215	.114	.034	.206	.110	.033	.197	.107	.033	
5.0	.215	.110	.032	.210	.108	.031	.201	.105	.031	.193	.102	.030	.185	.099	.030	
6.0	.201	.101	.029	.197	.099	.029	.189	.097	.028	.181	.094	.028	.174	.092	.027	
7.0	.188	.093	.026	.184	.092	.026	.177	.090	.026	.170	.087	.025	.164	.085	.025	
8.0	.177	.086	.024	.173	.085	.024	.167	.083	.024	.160	.081	.023	.155	.079	.023	
9.0	.166	.080	.022	.163	.079	.022	.157	.078	.022	.152	.076	.022	.146	.074	.021	
10.0	.157	.075	.021	.154	.074	.021	.149	.073	.021	.144	.071	.020	.139	.070	.020	

ρ <sub>cc</sub>	80%			70%			50%			30%			10%			0
ρ <sub>w</sub>	50%	30%	10%	50%	30%	10%	50%	30%	10%	50%	30%	10%	50%	30%	10%	0
ρ <sub>fc</sub>	20%			20%			20%			20%			20%			0
<b>RCR</b>	<b>RCR:Room Cavity Ratio</b>						<b>Ceiling Cavity Exitance Coefficients(CCEC)</b>									
0.0	.210	.210	.210	.179	.179	.179	.122	.122	.122	.070	.070	.070	.022	.022	.022	
1.0	.197	.176	.157	.169	.151	.135	.115	.104	.093	.066	.060	.054	.021	.019	.018	
2.0	.188	.151	.121	.161	.130	.105	.110	.090	.073	.064	.052	.043	.020	.017	.014	
3.0	.179	.134	.097	.154	.115	.084	.106	.080	.059	.061	.047	.035	.020	.015	.011	
4.0	.172	.120	.081	.147	.104	.070	.101	.072	.049	.059	.042	.029	.019	.014	.010	
5.0	.165	.110	.069	.141	.095	.060	.097	.066	.042	.056	.039	.025	.018	.013	.008	
6.0	.158	.101	.061	.135	.088	.053	.093	.061	.037	.054	.036	.022	.017	.012	.007	
7.0	.151	.094	.054	.130	.082	.047	.090	.057	.034	.052	.034	.020	.017	.011	.007	
8.0	.145	.088	.050	.125	.077	.043	.086	.054	.031	.050	.032	.018	.016	.010	.006	
9.0	.139	.084	.046	.120	.072	.040	.083	.051	.028	.048	.030	.017	.016	.010	.006	
10.0	.134	.079	.043	.115	.069	.038	.080	.048	.027	.047	.029	.016	.015	.009	.005	

**C Range: 0 - 360DEG**  
**C Interval: 30.0DEG**  
**Test Speed: HIGH**  
**Temperature:25.3DEG**  
**Operators:DAMIN**  
**Test Date:2022-04-24**

**γ Range: 0 - 180DEG**  
**γ Interval: 1.0DEG**  
**Test System:EVERFINE GO-2000A\_V1 SYSTEM V2.00.443**  
**Humidity:65.0%**  
**Test Distance:8.000m [K=0.7063]**  
**Remarks:**

**UGR(Unified Glare Rating) Table**

Test:U:220.50V I:0.0890A P:18.000W PF:0.9160 Freq:50.00Hz		
Lamp Flux:1879.63x1 lm		
Name: NS11-φ230MM-18W	Type: LED	
MFR.: Lumega Group	DIM.: D230*H90mm	
	SUR.: D180mm	

ceiling/cavity	0.7	0.7	0.5	0.5	0.3	0.7	0.7	0.5	0.5	0.3
walls	0.5	0.3	0.5	0.3	0.3	0.5	0.3	0.5	0.3	0.3
working plane	0.2	0.2	0.2	0.2	0.2	0.2	0.2	0.2	0.2	0.2
Room dimensions	Viewed crosswise					Viewed endwise				
<b>x = 2H y = 2H</b>	<b>23.2</b>	<b>24.6</b>	<b>23.5</b>	<b>24.8</b>	<b>25.1</b>	<b>23.1</b>	<b>24.5</b>	<b>23.4</b>	<b>24.8</b>	<b>25.0</b>
3H	24.2	25.4	24.5	25.7	26.0	24.1	25.4	24.4	25.6	25.9
4H	24.4	25.6	24.8	25.9	26.2	24.3	25.5	24.7	25.8	26.1
6H	24.5	25.6	24.9	25.9	26.3	24.4	25.5	24.8	25.8	26.2
8H	24.5	25.6	24.8	25.9	26.2	24.4	25.5	24.8	25.8	26.1
12H	24.4	25.5	24.8	25.8	26.2	24.4	25.4	24.7	25.7	26.1
<b>4H 2H</b>	<b>23.6</b>	<b>24.8</b>	<b>23.9</b>	<b>25.1</b>	<b>25.4</b>	<b>23.6</b>	<b>24.8</b>	<b>23.9</b>	<b>25.1</b>	<b>25.4</b>
3H	24.7	25.8	25.1	26.1	26.5	24.6	25.7	25.0	26.0	26.4
4H	25.1	26.0	25.5	26.4	26.8	25.0	25.9	25.4	26.3	26.7
6H	25.2	26.0	25.6	26.4	26.8	25.1	25.9	25.5	26.3	26.7
8H	25.2	26.0	25.6	26.4	26.8	25.1	25.9	25.5	26.3	26.7
12H	25.2	25.9	25.6	26.3	26.8	25.1	25.8	25.6	26.2	26.7
<b>8H 4H</b>	<b>25.1</b>	<b>25.9</b>	<b>25.6</b>	<b>26.3</b>	<b>26.7</b>	<b>25.0</b>	<b>25.8</b>	<b>25.5</b>	<b>26.2</b>	<b>26.7</b>
6H	25.3	25.9	25.8	26.4	26.9	25.2	25.9	25.7	26.3	26.8
8H	25.3	25.9	25.8	26.4	26.9	25.3	25.8	25.8	26.3	26.8
12H	25.3	25.8	25.9	26.3	26.8	25.3	25.8	25.8	26.3	26.8
<b>12H 4H</b>	<b>25.1</b>	<b>25.8</b>	<b>25.6</b>	<b>26.2</b>	<b>26.7</b>	<b>25.0</b>	<b>25.7</b>	<b>25.5</b>	<b>26.1</b>	<b>26.6</b>
6H	25.3	25.8	25.8	26.3	26.8	25.2	25.8	25.7	26.2	26.7
8H	25.3	25.8	25.8	26.3	26.8	25.3	25.7	25.8	26.2	26.8
<b>Variations with the observer position at spacings(CIE Pub.117):</b>										
<b>S = 1.0H</b>	<b>+ 0.3 / - 0.4</b>					<b>+ 0.3 / - 0.4</b>				
<b>1.5H</b>	<b>+ 0.2 / - 0.4</b>					<b>+ 0.2 / - 0.4</b>				
<b>2.0H</b>	<b>+ 0.5 / - 0.4</b>					<b>+ 0.5 / - 0.5</b>				

CIE Pub.117, 1880 lm Total Lamp Luminous Flux Corrected (8log(F/F0) = 2.2)  
 Area: 0.025 m2

C Range: 0 - 360DEG  
 C Interval: 30.0DEG  
 Test Speed: HIGH  
 Temperature:25.3DEG  
 Operators:DAMIN  
 Test Date:2022-04-24

γ Range: 0 - 180DEG  
 γ Interval: 1.0DEG  
 Test System:EVERFINE GO-2000A\_V1 SYSTEM V2.00.443  
 Humidity:65.0%  
 Test Distance:8.000m [K=0.7063]  
 Remarks:

**UTILIZATION FACTORS TABLE**

Test:U:220.50V I:0.0890A P:18.000W PF:0.9160 Freq:50.00Hz Lamp Flux:1879.63x1 lm		
Name: NS11-φ230MM-18W	Type: LED	
MFR.: Lumega Group	DIM.: D230*H90mm	
	SUR.: D180mm	

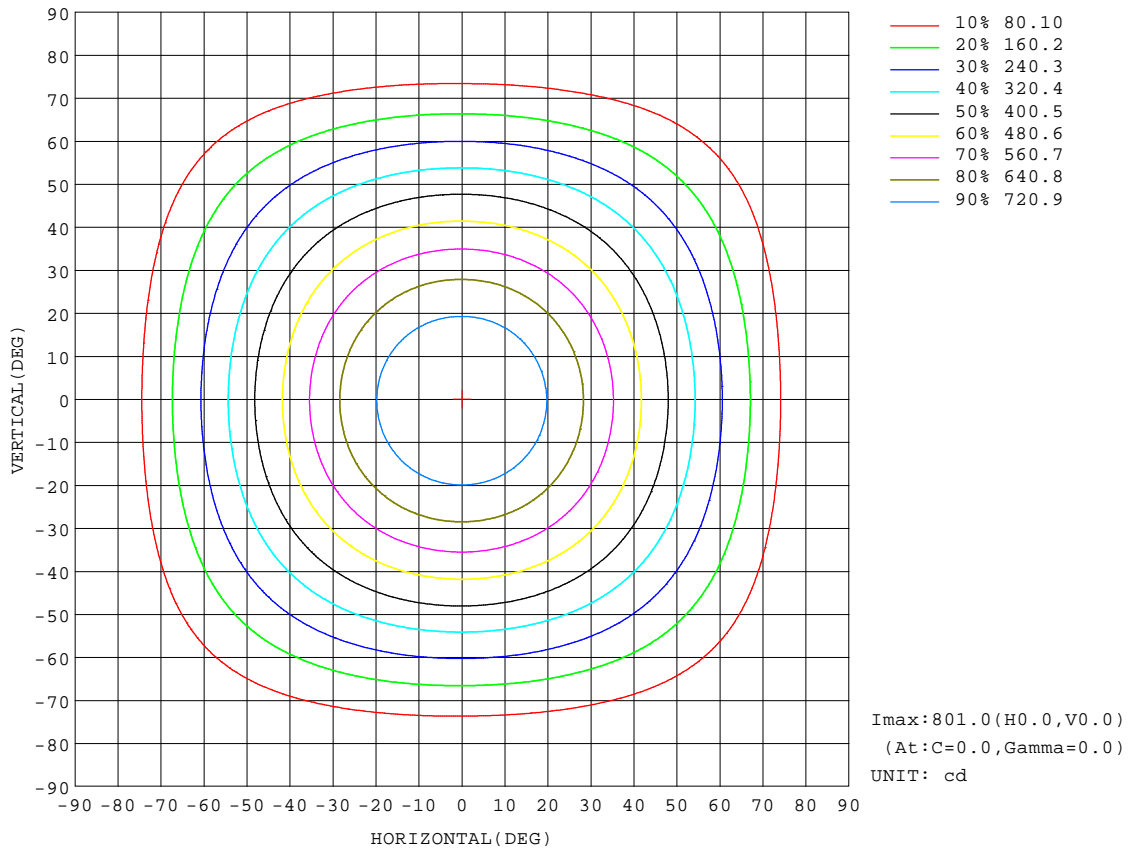
REFLECTANCE										
Ceiling	0.8	0.8	0.8	0.7	0.7	0.7	0.5	0.5	0.5	0
Walls	0.7	0.5	0.3	0.7	0.5	0.3	0.7	0.5	0.3	0
Working plane	0.2	0.2	0.2	0.2	0.2	0.2	0.2	0.2	0.2	0
<b>ROOM INDEX</b>	<b>UTILIZATION FACTORS(PERCENT) <math>k(RI) \times RCR = 5</math></b>									
<b>k = 0.60</b>	61	50	43	60	49	43	59	49	43	37
<b>0.80</b>	71	60	53	70	60	53	68	59	52	46
<b>1.00</b>	79	69	62	78	68	62	75	69	61	54
<b>1.25</b>	86	76	70	84	76	69	82	74	68	61
<b>1.50</b>	91	82	75	89	81	75	86	79	74	66
<b>2.00</b>	97	89	84	95	88	83	92	86	81	73
<b>2.50</b>	101	94	88	98	92	87	94	89	85	77
<b>3.00</b>	104	98	93	101	96	91	97	93	89	80
<b>4.00</b>	107	102	98	105	100	96	100	97	93	84
<b>5.00</b>	109	105	102	107	103	100	102	99	96	87
<b>ROOM INDEX</b>	<b>UF(total)</b>									<b>Direct</b>
<b>According to DIN EN 13032-2 2004</b>			<b>Suspended</b>				<b>SHRNOM = 1.25</b>			

**C Range: 0 - 360DEG**  
**C Interval: 30.0DEG**  
**Test Speed: HIGH**  
**Temperature:25.3DEG**  
**Operators:DAMIN**  
**Test Date:2022-04-24**

**γ Range: 0 - 180DEG**  
**γ Interval: 1.0DEG**  
**Test System:EVERFINE GO-2000A\_V1 SYSTEM V2.00.443**  
**Humidity:65.0%**  
**Test Distance:8.000m [K=0.7063]**  
**Remarks:**

**ISOCANDELA DIAGRAM**

Test:U:220.50V I:0.0890A P:18.000W PF:0.9160 Freq:50.00Hz		
Lamp Flux:1879.63x1 lm		
Name: NS11-φ230MM-18W	Type: LED	
MFR.: Lumega Group	DIM.: D230*H90mm	
	SUR.: D180mm	



**C Range: 0 - 360DEG**  
**C Interval: 30.0DEG**  
**Test Speed: HIGH**  
**Temperature: 25.3DEG**  
**Operators: DAMIN**  
**Test Date: 2022-04-24**

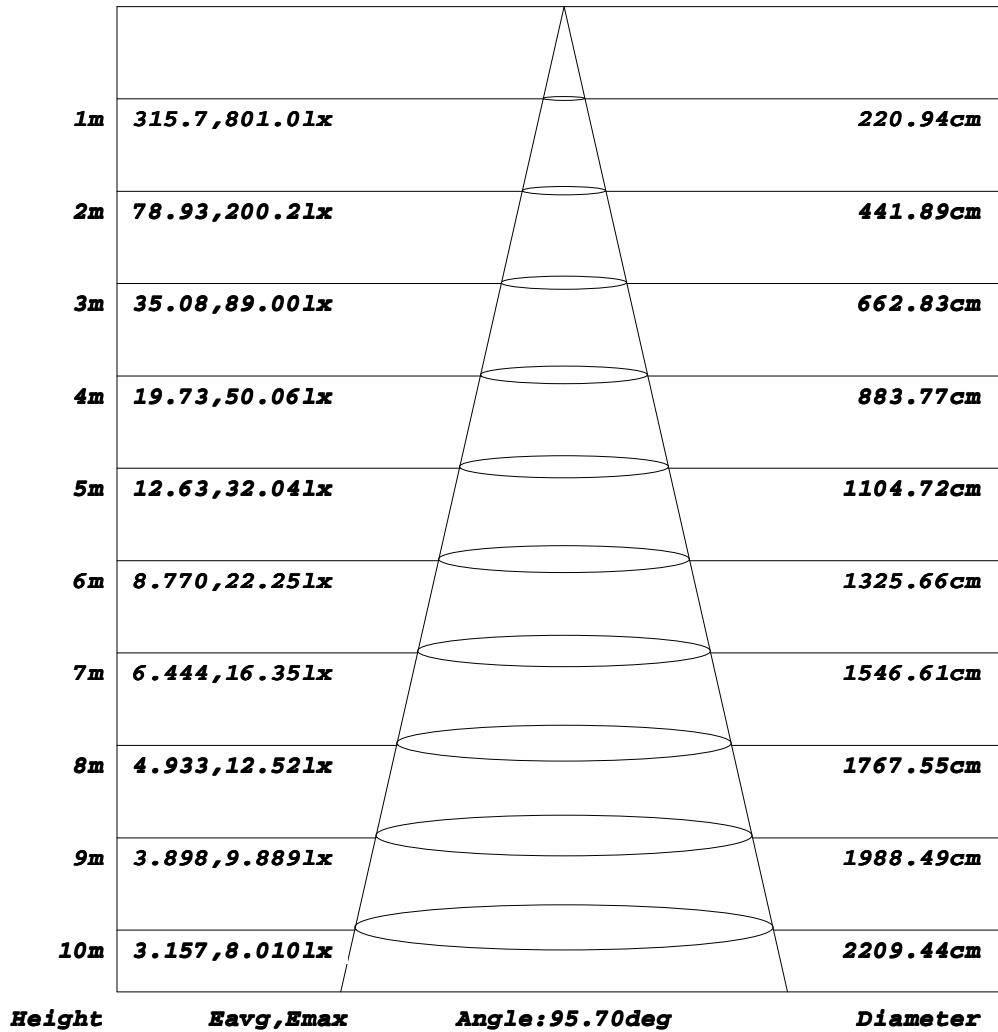
**γ Range: 0 - 180DEG**  
**γ Interval: 1.0DEG**  
**Test System: EVERFINE GO-2000A\_V1 SYSTEM V2.00.443**  
**Humidity: 65.0%**  
**Test Distance: 8.000m [K=0.7063]**  
**Remarks:**



**AAI Figure**

Test:U:220.50V I:0.0890A P:18.000W PF:0.9160 Freq:50.00Hz		
Lamp Flux:1879.63x1 lm		
Name: NS11-φ230MM-18W	Type: LED	
MFR.: Lumega Group	DIM.: D230*H90mm	
	SUR.: D180mm	

**Flux out:1223 lm**



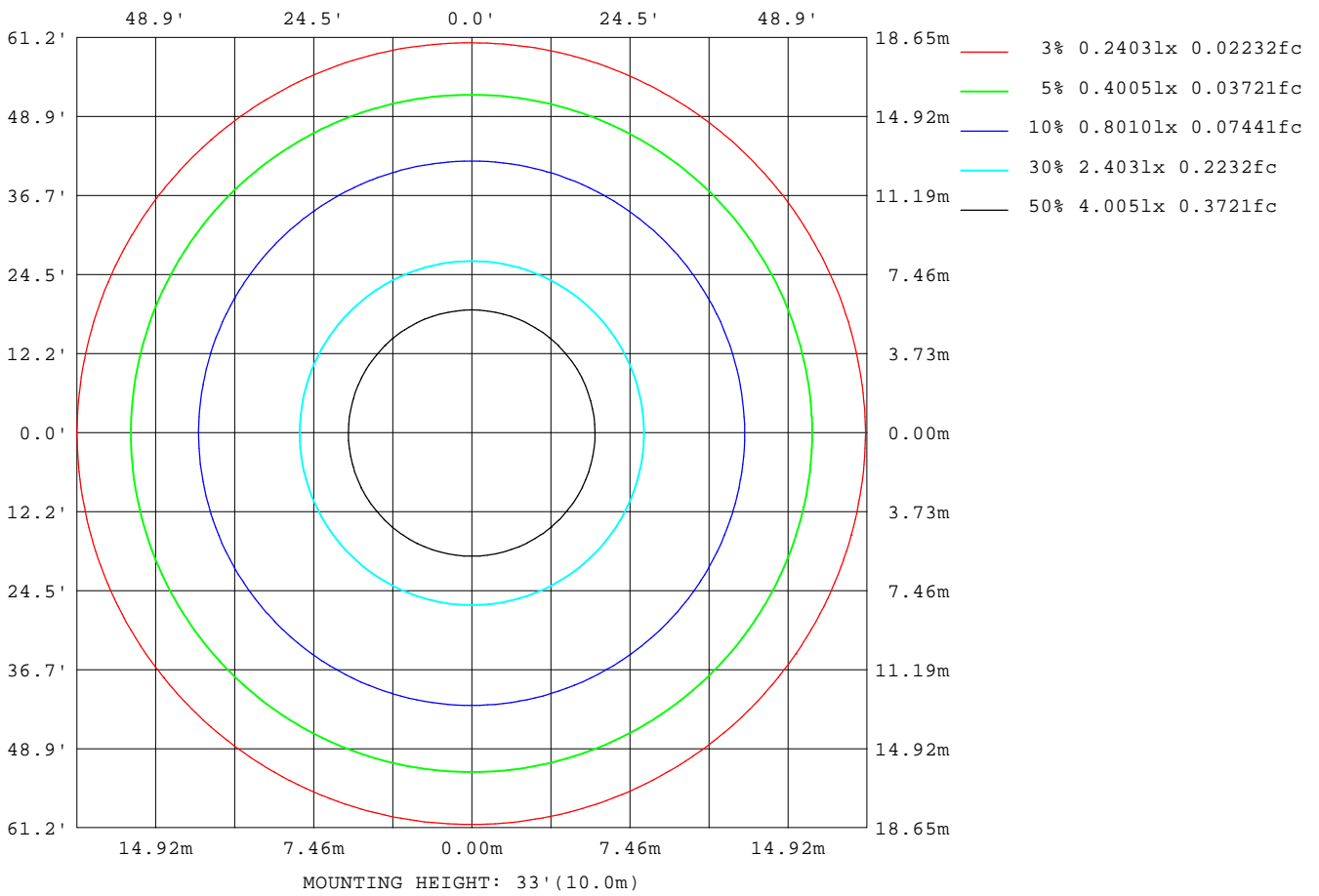
Note: The Curves indicate the illuminated area and the average illumination when the luminaire is at different distance.

**C Range: 0 - 360DEG**  
**C Interval: 30.0DEG**  
**Test Speed: HIGH**  
**Temperature: 25.3DEG**  
**Operators: DAMIN**  
**Test Date: 2022-04-24**

**γ Range: 0 - 180DEG**  
**γ Interval: 1.0DEG**  
**Test System: EVERFINE GO-2000A\_V1 SYSTEM V2.00.443**  
**Humidity: 65.0%**  
**Test Distance: 8.000m [K=0.7063]**  
**Remarks:**

**ISOLUX DIAGRAM**

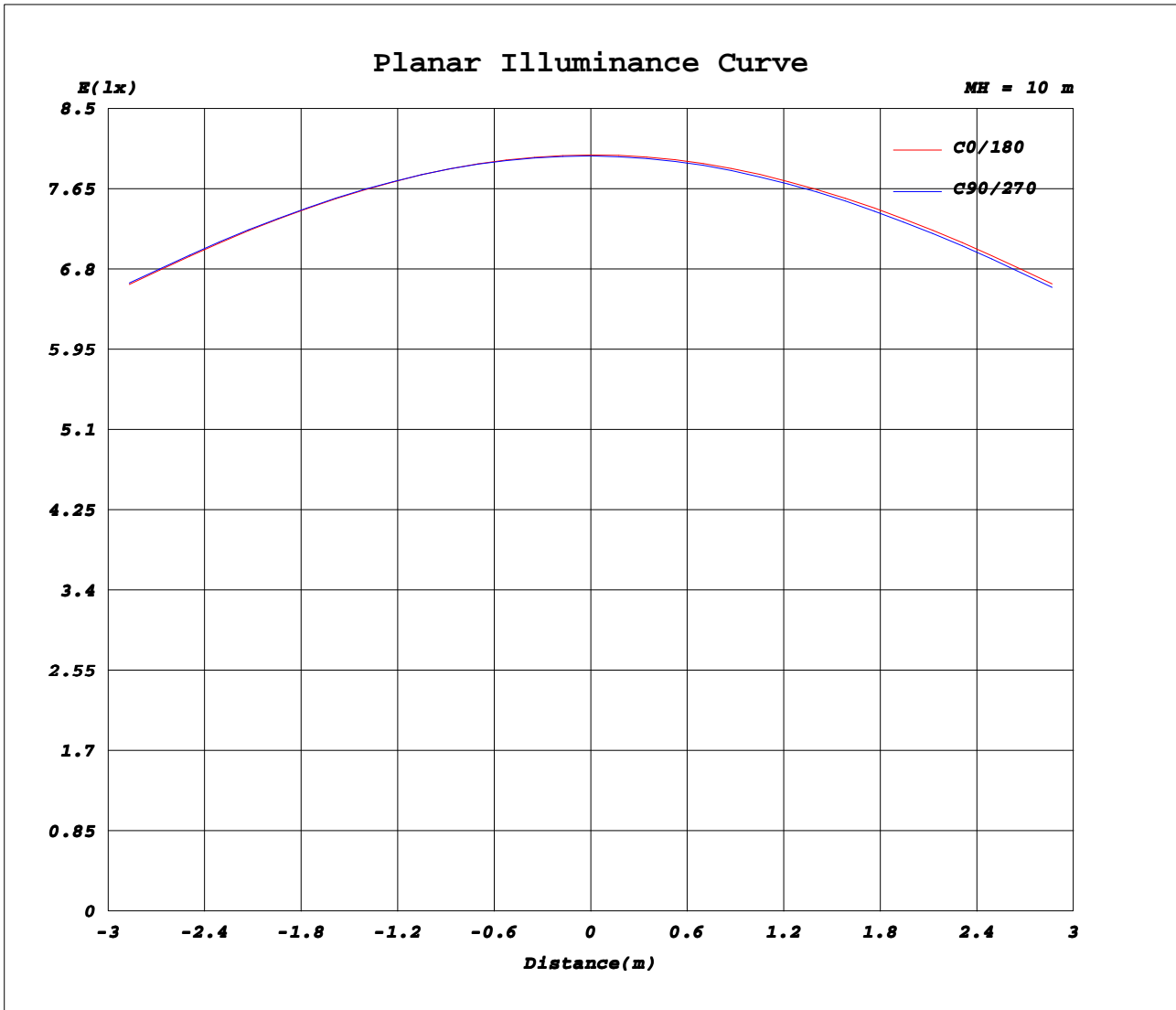
Test:U:220.50V I:0.0890A P:18.000W PF:0.9160 Freq:50.00Hz		
Lamp Flux:1879.63x1 lm		
Name: NS11-φ230MM-18W	Type: LED	
MFR.: Lumega Group	DIM.: D230*H90mm	
	SUR.: D180mm	



**C Range: 0 - 360DEG**  
**C Interval: 30.0DEG**  
**Test Speed: HIGH**  
**Temperature: 25.3DEG**  
**Operators: DAMIN**  
**Test Date: 2022-04-24**

**γ Range: 0 - 180DEG**  
**γ Interval: 1.0DEG**  
**Test System: EVERFINE GO-2000A\_V1 SYSTEM V2.00.443**  
**Humidity: 65.0%**  
**Test Distance: 8.000m [K=0.7063]**  
**Remarks:**

**Planar Illuminance Curve**



**C Range: 0 - 360DEG**  
**C Interval: 30.0DEG**  
**Test Speed: HIGH**  
**Temperature: 25.3DEG**  
**Operators: DAMIN**  
**Test Date: 2022-04-24**

**γ Range: 0 - 180DEG**  
**γ Interval: 1.0DEG**  
**Test System: EVERFINE GO-2000A\_V1 SYSTEM V2.00.443**  
**Humidity: 65.0%**  
**Test Distance: 8.000m [K=0.7063]**  
**Remarks:**

**LUMINOUS DISTRIBUTION INTENSITY DATA**

Test:U:220.50V I:0.0890A P:18.000W PF:0.9160 Freq:50.00Hz Lamp Flux:1879.63x1 lm		
Name: NS11-φ230MM-18W	Type: LED	
MFR.: Lumega Group	DIM.: D230*H90mm	
	SUR.: D180mm	

Table--1

UNIT: cd

C (DEG) \ γ (DEG)	0	30	60	90	120	150	180	210	240	270	300	330							
0	801	800	800	800	800	801	801	801	800	800	800	800							
5	795	795	795	795	796	796	796	795	794	793	794	794							
10	779	779	780	780	780	780	780	778	777	776	776	777							
15	753	754	755	755	755	755	754	753	751	750	750	752							
20	719	720	720	721	721	720	719	718	716	715	715	717							
25	674	675	676	677	677	676	675	673	671	670	670	672							
30	622	623	624	625	625	624	623	621	619	617	617	619							
35	563	565	567	568	568	567	566	564	561	559	559	561							
40	502	503	504	505	504	503	502	500	499	498	498	500							
45	438	439	440	441	441	441	441	438	436	434	434	435							
50	375	375	375	375	376	377	377	374	371	369	370	371							
55	311	310	309	309	310	312	312	309	306	304	305	307							
60	248	245	244	244	246	248	249	246	242	239	240	243							
65	186	182	180	180	183	186	188	184	180	176	177	180							
70	125	122	120	119	123	126	129	125	120	116	117	120							
75	71.1	69.5	68.7	68.8	71.0	73.3	74.6	71.5	67.7	64.6	64.9	67.1							
80	28.2	28.3	28.6	29.1	30.2	31.2	31.8	30.7	29.1	27.7	27.4	27.5							
85	10.8	11.8	12.4	12.9	12.9	12.8	12.4	11.9	11.3	10.7	10.6	10.6							
90	3.06	2.80	2.75	2.90	3.47	4.08	4.61	4.61	4.43	4.12	3.83	3.47							
95	3.20	3.08	3.08	3.23	3.62	4.06	4.46	4.62	4.65	4.52	4.24	3.80							
100	3.80	3.64	3.62	3.75	4.15	4.60	5.01	5.16	5.18	5.06	4.79	4.37							
105	4.48	4.31	4.29	4.41	4.80	5.24	5.64	5.79	5.81	5.69	5.42	5.02							
110	5.21	5.02	4.98	5.10	5.49	5.93	6.33	6.48	6.50	6.37	6.12	5.73							
115	5.99	5.77	5.71	5.82	6.23	6.70	7.13	7.25	7.24	7.10	6.85	6.48							
120	6.76	6.55	6.50	6.60	7.00	7.45	7.86	7.98	7.97	7.83	7.59	7.23							
125	7.52	7.33	7.29	7.39	7.78	8.23	8.62	8.71	8.68	8.52	8.29	7.95							
130	8.27	8.09	8.05	8.15	8.52	8.94	9.32	9.40	9.35	9.20	8.98	8.67							
135	8.92	8.77	8.74	8.85	9.21	9.61	9.96	10.0	9.96	9.80	9.59	9.29							
140	9.52	9.39	9.38	9.49	9.82	10.2	10.5	10.6	10.5	10.4	10.2	9.89							
145	10.1	10.0	10.0	10.1	10.4	10.7	11.0	11.0	11.0	10.9	10.7	10.4							
150	10.6	10.5	10.5	10.6	10.9	11.1	11.4	11.4	11.4	11.2	11.1	10.9							
155	11.1	11.1	11.2	11.2	11.4	11.6	11.8	11.8	11.8	11.7	11.5	11.3							
160	11.6	11.6	11.7	11.7	11.9	12.0	12.1	12.1	12.1	12.0	11.9	11.8							
165	12.0	12.1	12.1	12.2	12.3	12.3	12.4	12.4	12.4	12.3	12.3	12.2							
170	12.4	12.5	12.5	12.6	12.6	12.6	12.6	12.6	12.6	12.6	12.5	12.5							
175	12.8	12.8	12.8	12.8	12.8	12.8	12.9	12.8	12.8	12.8	12.8	12.8							
180	13.0	12.9	12.9	12.9	12.9	13.0	13.0	12.9	12.9	12.9	12.9	12.9							

**C Range: 0 - 360DEG**  
**C Interval: 30.0DEG**  
**Test Speed: HIGH**  
**Temperature: 25.3DEG**  
**Operators: DAMIN**  
**Test Date: 2022-04-24**

**γ Range: 0 - 180DEG**  
**γ Interval: 1.0DEG**  
**Test System: EVERFINE GO-2000A\_V1 SYSTEM V2.00.443**  
**Humidity: 65.0%**  
**Test Distance: 8.000m [K=0.7063]**  
**Remarks:**