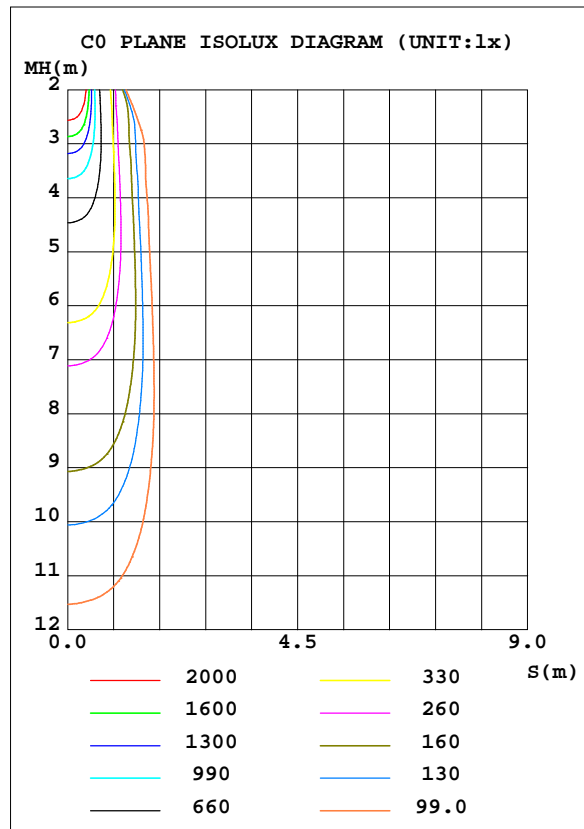
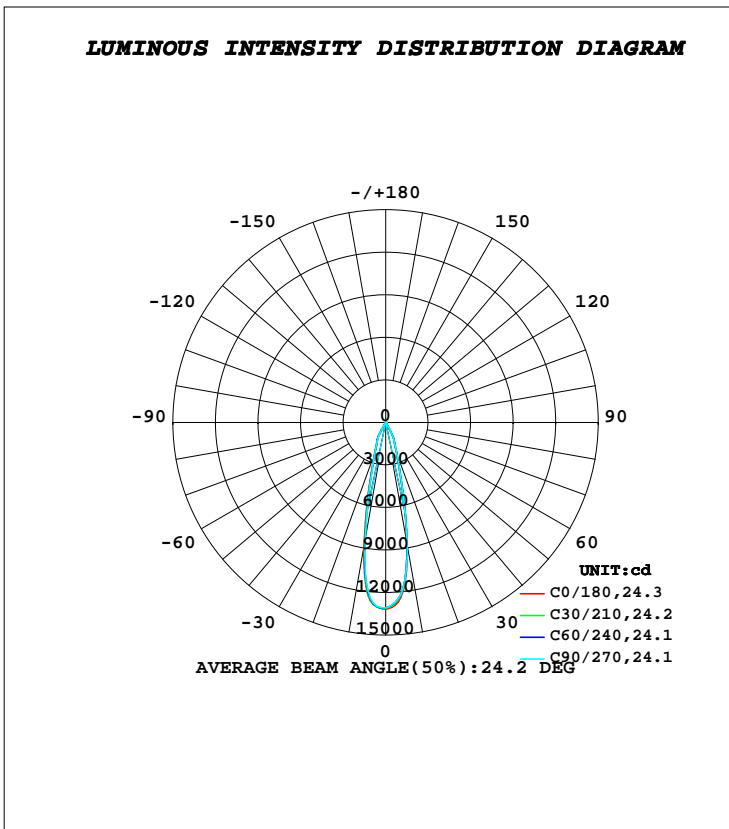


LUMINAIRE PHOTOMETRIC TEST REPORT

Test:U:221.60V I:0.1430A P:30.200W PF:0.9830 Freq:50.00Hz		
Lamp Flux:3094.4lx1 lm		
Name: NS15-φ138mm-30W	Type: LED	
MFR.: Lumega Group	DIM.: D138*H150mm	
	SUR.: D110mm	

DATA OF LAMP		PHOTOMETRIC DATA Eff: 102.46 lm/W			
MODEL		I _{max} (cd)	13154	S/MH(C0/180)	0.41
NOMINAL POWER(W)	30	LOR(%)	100.0	S/MH(C90/270)	0.41
RATED VOLTAGE(V)	220	TOTAL FLUX(lm)	3094.4	η UP, DN(C0-180)	1.4, 48.7
NOMINAL FLUX(lm)	3094.41	CIE CLASS	DIRECT	η UP, DN(C180-360)	1.6, 48.3
LAMPS INSIDE	1	η up(%)	3.0	CIBSE SHR NOM	0.00
TEST VOLTAGE(V)	221.6	η down(%)	97.0	CIBSE SHR MAX	0.30



C Range: 0 - 360DEG
C Interval: 30.0DEG
Test Speed: HIGH
Temperature: 25.3DEG
Operators: DAMIN
Test Date: 2022-05-14

γ Range: 0 - 180DEG
γ Interval: 1.0DEG
Test System: EVERFINE GO-2000A_V1 SYSTEM V2.00.443
Humidity: 65.0%
Test Distance: 8.000m [K=0.7063]
Remarks:

ZONAL FLUX DIAGRAM

ZONAL FLUX DIAGRAM:

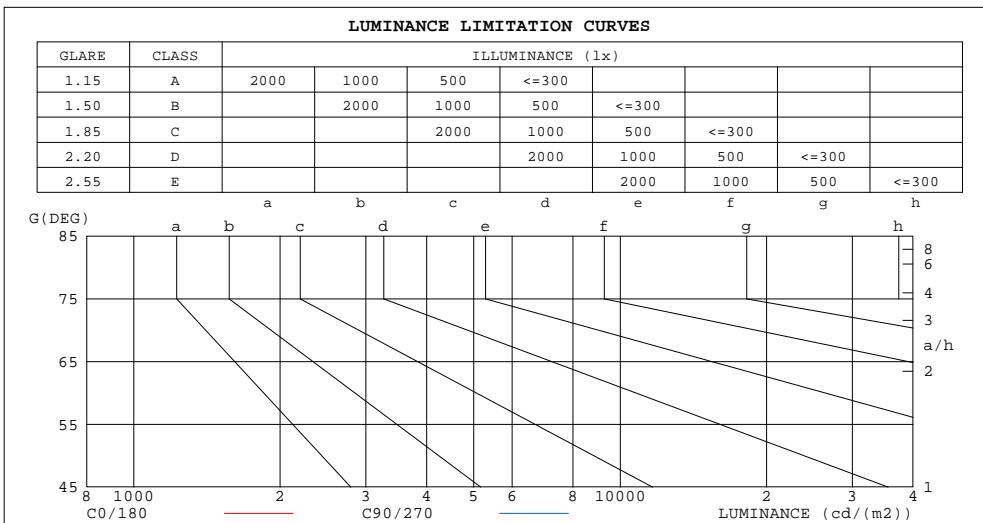
γ	C0	C45	C90	C135	C180	C225	C270	C315	γ	Φ zone	Φ total	%lum,lamp
10	865.8	868.7	872.6	881.2	883.6	858.7	835.8	842.2	0- 10	1064	1064	34.4,34.4
20	224.4	224.3	224.7	226.4	227.3	223.5	220.0	220.9	10- 20	1227	2291	74,74
30	52.49	56.15	59.03	61.24	62.10	59.73	56.56	54.36	20- 30	638.8	2930	94.7,94.7
40	0.8430	0.8048	0.8585	1.080	1.288	1.280	1.187	1.042	30- 40	58.34	2988	96.6,96.6
50	0.3213	0.3011	0.3218	0.4164	0.5070	0.5082	0.4721	0.4096	40- 50	4.952	2993	96.7,96.7
60	0.0969	0.0889	0.0989	0.1408	0.1822	0.1898	0.1790	0.1467	50- 60	2.342	2996	96.8,96.8
70	0.0664	0.0419	0.0654	0.1727	0.2807	0.3077	0.2864	0.2014	60- 70	1.510	2997	96.9,96.9
80	0.0490	0.0081	0.0503	0.2380	0.4260	0.4702	0.4303	0.2825	70- 80	2.254	2999	96.9,96.9
90	0.0756	0.0262	0.0757	0.2985	0.5213	0.5705	0.5207	0.3476	80- 90	3.031	3002	97,97
100	0.1467	0.0930	0.1417	0.3690	0.5971	0.6486	0.5993	0.4235	90-100	3.710	3006	97.1,97.1
110	0.3620	0.3071	0.3442	0.5404	0.7400	0.7897	0.7521	0.6017	100-110	4.746	3011	97.3,97.3
120	0.7048	0.6322	0.6687	0.8939	1.124	1.175	1.129	0.9649	110-120	7.213	3018	97.5,97.5
130	1.238	1.150	1.169	1.373	1.585	1.631	1.591	1.455	120-130	10.13	3028	97.9,97.9
140	2.170	2.081	2.074	2.205	2.345	2.359	2.327	2.263	130-140	13.69	3042	98.3,98.3
150	3.367	3.233	3.198	3.334	3.476	3.434	3.361	3.351	140-150	17.31	3059	98.9,98.9
160	4.439	4.279	4.226	4.365	4.497	4.360	4.218	4.273	150-160	17.72	3077	99.4,99.4
170	4.962	4.810	4.749	4.858	4.943	4.710	4.507	4.635	160-170	13.05	3090	99.9,99.9
180	4.847	4.557	4.447	4.656	4.862	4.647	4.431	4.545	170-180	4.470	3094	100,100
DEG	LUMINOUS INTENSITY:×10cd									UNIT: lm		

C Range: 0 - 360DEG
C Interval: 30.0DEG
Test Speed: HIGH
Temperature:25.3DEG
Operators:DAMIN
Test Date:2022-05-14

γ Range: 0 - 180DEG
 γ Interval: 1.0DEG
Test System:EVERFINE GO-2000A_V1 SYSTEM V2.00.443
Humidity:65.0%
Test Distance:8.000m [K=0.7063]
Remarks:

LUMINANCE LIMITATION CURVES

Test:U:221.60V I:0.1430A P:30.200W PF:0.9830 Freq:50.00Hz		
Lamp Flux:3094.41x1 lm		
Name: NS15-φ138mm-30W	Type: LED	
MFR.: Lumega Group	DIM.: D138*H150mm	
	SUR.: D110mm	



LUMINANCE cd/(m2)		
G(DEG)	C0/180	C90/270
85	679	695
80	313	322
75	238	248
70	216	212
65	204	199
60	215	220
55	415	422
50	555	556
45	762	778

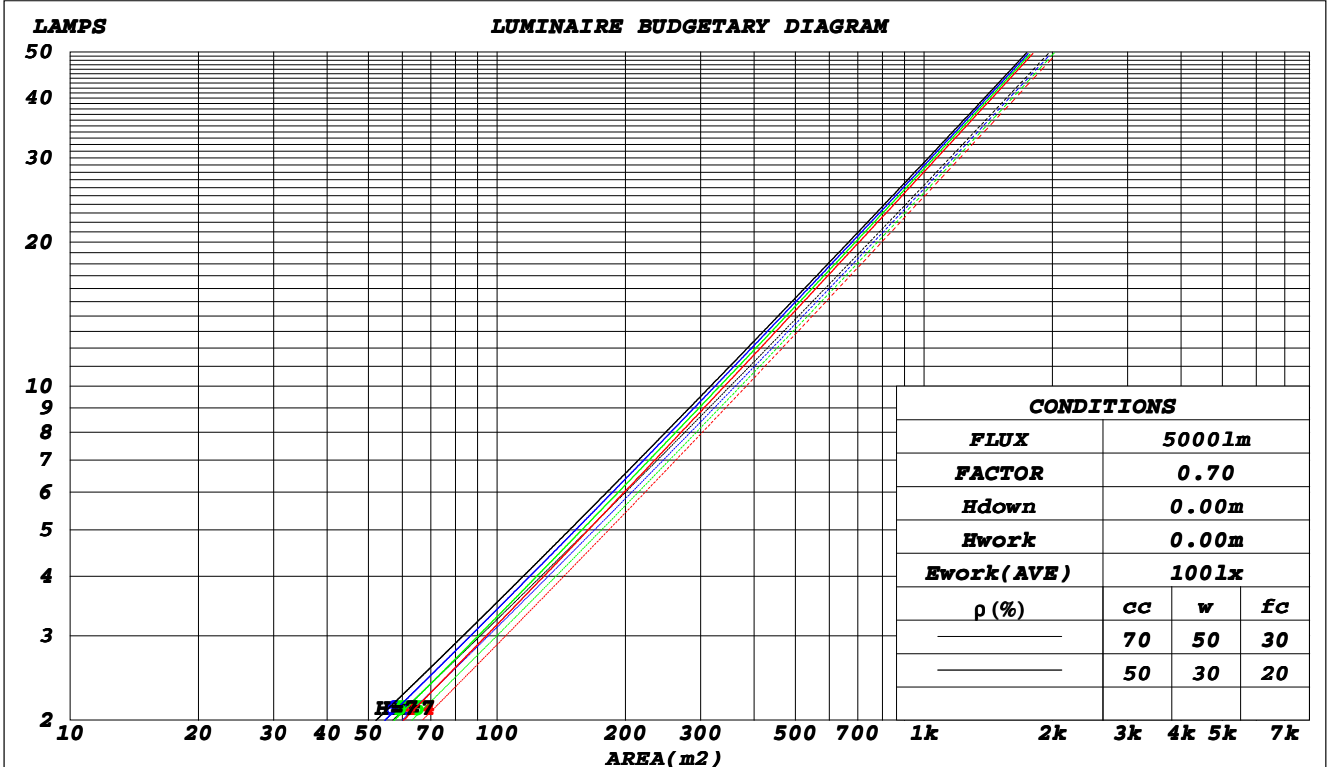
C Range: 0 - 360DEG
C Interval: 30.0DEG
Test Speed: HIGH
Temperature: 25.3DEG
Operators: DAMIN
Test Date: 2022-05-14

γ Range: 0 - 180DEG
γ Interval: 1.0DEG
Test System: EVERFINE GO-2000A_V1 SYSTEM V2.00.443
Humidity: 65.0%
Test Distance: 8.000m [K=0.7063]
Remarks:

CU AND LUMINAIRE BUDGETARY ESTIMATE DIAGRAM

Test:U:221.60V I:0.1430A P:30.200W PF:0.9830 Freq:50.00Hz		
Lamp Flux:3094.41lx1 lm		
Name: NS15-φ138mm-30W	Type: LED	
MFR.: Lumega Group	DIM.: D138*H150mm	
	SUR.: D110mm	

ρcc	80%			70%			50%			30%			10%			0
ρw	50%	30%	10%	50%	30%	10%	50%	30%	10%	50%	30%	10%	50%	30%	10%	0
ρfc	20%			20%			20%			20%			20%			0
RCR	RCR:Room Cavity Ratio									Coefficients of Utilization(CU)						
0.0	1.18	1.18	1.18	1.15	1.15	1.15	1.09	1.09	1.09	1.04	1.04	1.04	.99	.99	.99	.97
1.0	1.12	1.10	1.08	1.10	1.08	1.06	1.05	1.04	1.02	1.01	.00	.99	.97	.96	.96	.94
2.0	1.07	1.03	1.01	1.05	1.02	.00	1.01	.99	.97	.98	.96	.95	.95	.93	.92	.91
3.0	1.02	.98	.95	1.00	.97	.94	.97	.95	.92	.95	.93	.91	.92	.91	.89	.88
4.0	.98	.94	.91	.96	.93	.90	.94	.91	.89	.92	.89	.87	.90	.88	.86	.85
5.0	.94	.90	.87	.93	.89	.86	.91	.88	.85	.89	.86	.84	.88	.85	.83	.82
6.0	.91	.86	.83	.90	.86	.83	.88	.85	.82	.87	.84	.82	.85	.83	.81	.80
7.0	.88	.83	.80	.87	.83	.80	.86	.82	.80	.84	.81	.79	.83	.80	.78	.77
8.0	.85	.81	.78	.84	.80	.78	.83	.80	.77	.82	.79	.77	.81	.78	.76	.75
9.0	.82	.78	.75	.82	.78	.75	.81	.77	.75	.80	.77	.74	.79	.76	.74	.73
10.0	.80	.76	.73	.79	.76	.73	.79	.75	.73	.78	.75	.72	.77	.74	.72	.71



C Range: 0 - 360DEG
 C Interval: 30.0DEG
 Test Speed: HIGH
 Temperature:25.3DEG
 Operators:DAMIN
 Test Date:2022-05-14

γ Range: 0 - 180DEG
 γ Interval: 1.0DEG
 Test System:EVERFINE GO-2000A_V1 SYSTEM V2.00.443
 Humidity:65.0%
 Test Distance:8.000m [K=0.7063]
 Remarks:

WEC AND CCEC

Test:U:221.60V I:0.1430A P:30.200W PF:0.9830 Freq:50.00Hz		
Lamp Flux:3094.41x1 lm		
Name: NS15-φ138mm-30W	Type: LED	
MFR.: Lumega Group	DIM.: D138*H150mm	
	SUR.: D110mm	

ρ _{cc}	80%			70%			50%			30%			10%			0
ρ _w	50%	30%	10%	50%	30%	10%	50%	30%	10%	50%	30%	10%	50%	30%	10%	0
ρ _{fc}	20%			20%			20%			20%			20%			0
RCR	RCR:Room Cavity Ratio						Wall Exitance Coefficients(WEC)									
0.0																
1.0	.141	.080	.025	.133	.076	.024	.119	.068	.022	.106	.061	.020	.094	.055	.018	
2.0	.130	.071	.022	.124	.068	.021	.112	.062	.019	.101	.057	.018	.091	.052	.016	
3.0	.121	.064	.019	.116	.062	.019	.106	.057	.017	.097	.053	.016	.088	.049	.015	
4.0	.113	.059	.017	.109	.057	.017	.100	.053	.016	.092	.050	.015	.085	.046	.014	
5.0	.107	.054	.016	.103	.053	.015	.095	.050	.015	.088	.047	.014	.082	.044	.013	
6.0	.101	.051	.014	.098	.049	.014	.091	.047	.014	.085	.044	.013	.079	.042	.012	
7.0	.096	.047	.013	.093	.046	.013	.087	.044	.013	.082	.042	.012	.077	.040	.012	
8.0	.091	.045	.013	.089	.044	.012	.084	.042	.012	.079	.040	.012	.074	.038	.011	
9.0	.087	.042	.012	.085	.041	.012	.080	.040	.011	.076	.038	.011	.072	.037	.011	
10.0	.084	.040	.011	.082	.039	.011	.077	.038	.011	.074	.037	.010	.070	.035	.010	

ρ _{cc}	80%			70%			50%			30%			10%			0
ρ _w	50%	30%	10%	50%	30%	10%	50%	30%	10%	50%	30%	10%	50%	30%	10%	0
ρ _{fc}	20%			20%			20%			20%			20%			0
RCR	RCR:Room Cavity Ratio						Ceiling Cavity Exitance Coefficients(CCEC)									
0.0	.213	.213	.213	.182	.182	.182	.124	.124	.124	.071	.071	.071	.023	.023	.023	
1.0	.191	.180	.171	.164	.155	.147	.112	.107	.102	.065	.062	.059	.021	.020	.019	
2.0	.174	.156	.141	.149	.134	.122	.102	.093	.085	.059	.054	.050	.019	.017	.016	
3.0	.159	.136	.118	.136	.118	.103	.094	.082	.072	.054	.048	.042	.017	.016	.014	
4.0	.147	.121	.102	.126	.105	.088	.087	.073	.062	.050	.043	.037	.016	.014	.012	
5.0	.136	.109	.089	.117	.094	.077	.081	.066	.055	.047	.039	.032	.015	.013	.011	
6.0	.127	.099	.079	.110	.086	.069	.076	.060	.049	.044	.035	.029	.014	.012	.010	
7.0	.120	.091	.071	.103	.079	.062	.071	.055	.044	.041	.033	.026	.013	.011	.009	
8.0	.114	.084	.064	.098	.073	.056	.068	.051	.040	.039	.030	.024	.013	.010	.008	
9.0	.108	.079	.059	.093	.068	.051	.064	.048	.037	.038	.028	.022	.012	.009	.007	
10.0	.103	.074	.055	.089	.064	.048	.062	.045	.034	.036	.027	.020	.012	.009	.007	

C Range: 0 - 360DEG
C Interval: 30.0DEG
Test Speed: HIGH
Temperature:25.3DEG
Operators:DAMIN
Test Date:2022-05-14

γ Range: 0 - 180DEG
γ Interval: 1.0DEG
Test System:EVERFINE GO-2000A_V1 SYSTEM V2.00.443
Humidity:65.0%
Test Distance:8.000m [K=0.7063]
Remarks:

UGR(Unified Glare Rating) Table

Test:U:221.60V I:0.1430A P:30.200W PF:0.9830 Freq:50.00Hz		
Lamp Flux:3094.4lx1 lm		
Name: NS15-φ138mm-30W	Type: LED	
MFR.: Lumega Group	DIM.: D138*H150mm	
	SUR.: D110mm	

ceiling/cavity	0.7	0.7	0.5	0.5	0.3	0.7	0.7	0.5	0.5	0.3
walls	0.5	0.3	0.5	0.3	0.3	0.5	0.3	0.5	0.3	0.3
working plane	0.2	0.2	0.2	0.2	0.2	0.2	0.2	0.2	0.2	0.2
Room dimensions	Viewed crosswise					Viewed endwise				
x = 2H y = 2H	-2.5	-1.9	-2.3	-1.7	-1.5	2.1	2.8	2.4	3.0	3.2
3H	-2.6	-2.0	-2.3	-1.8	-1.6	2.0	2.6	2.3	2.8	3.1
4H	-2.7	-2.1	-2.4	-1.8	-1.6	1.9	2.5	2.2	2.8	3.0
6H	-2.7	-2.1	-2.3	-1.8	-1.5	1.9	2.4	2.2	2.7	3.0
8H	-2.6	-2.1	-2.3	-1.8	-1.5	1.8	2.4	2.2	2.7	3.0
12H	-2.5	-2.0	-2.2	-1.7	-1.4	1.8	2.3	2.2	2.6	3.0
4H 2H	-2.8	-2.2	-2.4	-1.9	-1.7	1.9	2.5	2.2	2.7	3.0
3H	-2.8	-2.3	-2.5	-2.0	-1.7	1.7	2.2	2.1	2.6	2.9
4H	-2.9	-2.4	-2.5	-2.1	-1.7	1.7	2.1	2.0	2.5	2.8
6H	-2.9	-2.5	-2.4	-2.1	-1.7	1.6	2.0	2.0	2.4	2.8
8H	-2.8	-2.4	-2.4	-2.0	-1.6	1.6	1.9	2.0	2.3	2.8
12H	-2.6	-2.3	-2.2	-1.9	-1.4	1.6	1.9	2.0	2.3	2.8
8H 4H	-3.0	-2.6	-2.6	-2.3	-1.8	1.5	1.9	1.9	2.3	2.7
6H	-3.0	-2.7	-2.6	-2.3	-1.8	1.4	1.7	1.9	2.2	2.6
8H	-3.0	-2.7	-2.5	-2.2	-1.7	1.4	1.7	1.9	2.1	2.6
12H	-2.7	-2.5	-2.2	-2.0	-1.5	1.4	1.6	1.9	2.1	2.7
12H 4H	-3.1	-2.7	-2.6	-2.3	-1.9	1.4	1.8	1.9	2.2	2.7
6H	-3.1	-2.8	-2.6	-2.3	-1.8	1.3	1.6	1.8	2.1	2.6
8H	-3.0	-2.8	-2.5	-2.3	-1.8	1.3	1.6	1.8	2.0	2.6
Variations with the observer position at spacings(CIE Pub.117):										
S = 1.0H	+ 1.9 / - 2.1					+ 1.8 / - 2.0				
1.5H	+ 3.0 / - 1.6					+ 2.9 / - 1.6				
2.0H	+ 2.6 / - 2.2					+ 2.7 / - 2.2				

CIE Pub.117, 3094 lm Total Lamp Luminous Flux Corrected ($8\log(F/F_0) = 3.9$)
 Area: 0.009 m²

C Range: 0 - 360DEG
 C Interval: 30.0DEG
 Test Speed: HIGH
 Temperature:25.3DEG
 Operators:DAMIN
 Test Date:2022-05-14

γ Range: 0 - 180DEG
 γ Interval: 1.0DEG
 Test System:EVERFINE GO-2000A_V1 SYSTEM V2.00.443
 Humidity:65.0%
 Test Distance:8.000m [K=0.7063]
 Remarks:

UTILIZATION FACTORS TABLE

Test:U:221.60V I:0.1430A P:30.200W PF:0.9830 Freq:50.00Hz Lamp Flux:3094.41x1 lm		
Name: NS15-φ138mm-30W	Type: LED	
MFR.: Lumega Group	DIM.: D138*H150mm	
	SUR.: D110mm	

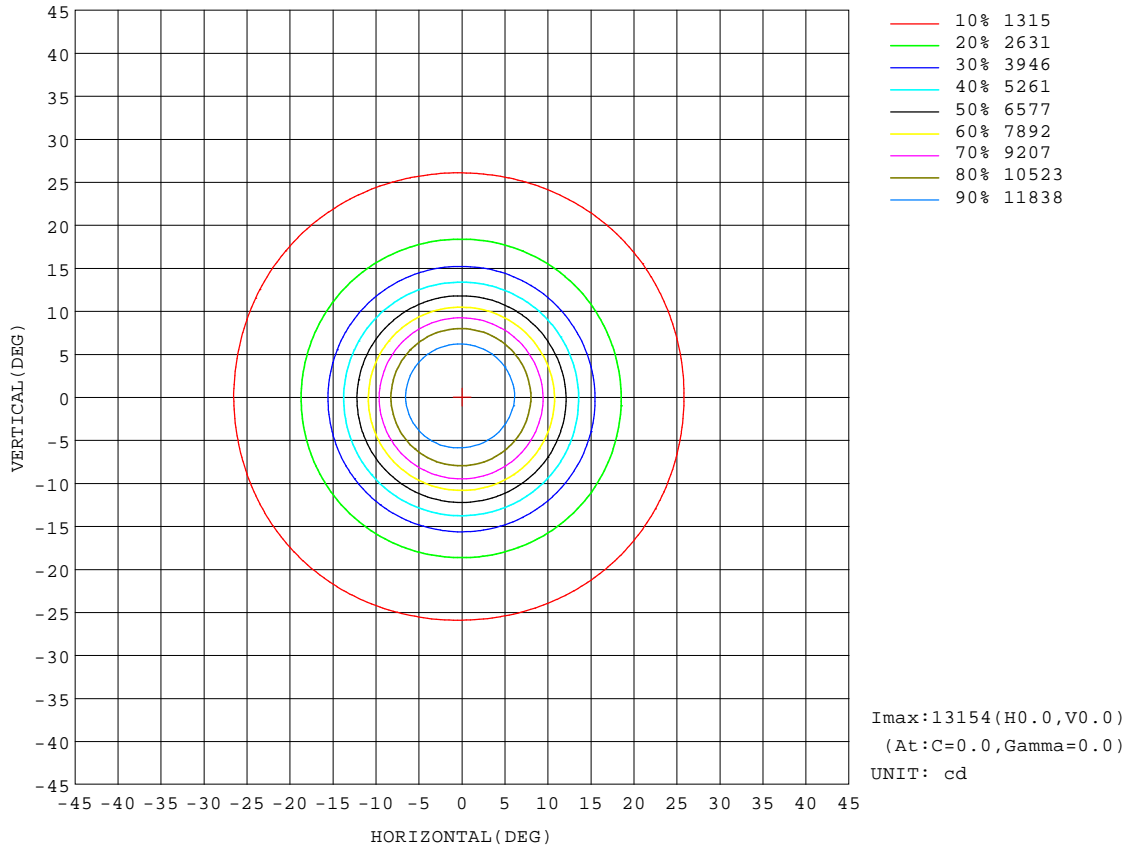
REFLECTANCE										
Ceiling	0.8	0.8	0.8	0.7	0.7	0.7	0.5	0.5	0.5	0
Walls	0.7	0.5	0.3	0.7	0.5	0.3	0.7	0.5	0.3	0
Working plane	0.2	0.2	0.2	0.2	0.2	0.2	0.2	0.2	0.2	0
ROOM INDEX	UTILIZATION FACTORS(PERCENT) $k(RI) \times RCR = 5$									
k = 0.60	90	84	80	89	83	80	88	83	80	77
0.80	96	91	88	96	91	88	94	90	87	83
1.00	100	95	92	99	94	91	97	94	91	87
1.25	104	99	96	103	98	95	100	97	94	90
1.50	106	102	99	105	101	98	102	99	97	92
2.00	109	105	102	107	103	101	104	101	99	93
2.50	110	107	104	108	105	103	105	102	100	94
3.00	112	108	106	109	107	104	106	104	102	95
4.00	113	111	109	111	109	107	107	105	104	96
5.00	115	113	111	112	111	109	108	107	105	97
ROOM INDEX	UF(total)									Direct
According to DIN EN 13032-2 2004			Suspended					SHRNOM = 1.25		

C Range: 0 - 360DEG
C Interval: 30.0DEG
Test Speed: HIGH
Temperature:25.3DEG
Operators:DAMIN
Test Date:2022-05-14

γ Range: 0 - 180DEG
γ Interval: 1.0DEG
Test System:EVERFINE GO-2000A_V1 SYSTEM V2.00.443
Humidity:65.0%
Test Distance:8.000m [K=0.7063]
Remarks:

ISOCANDELA DIAGRAM

Test:U:221.60V I:0.1430A P:30.200W PF:0.9830 Freq:50.00Hz		
Lamp Flux:3094.41x1 l m		
Name: NS15-φ138mm-30W	Type: LED	
MFR.: Lumega Group	DIM.: D138*H150mm	
	SUR.: D110mm	



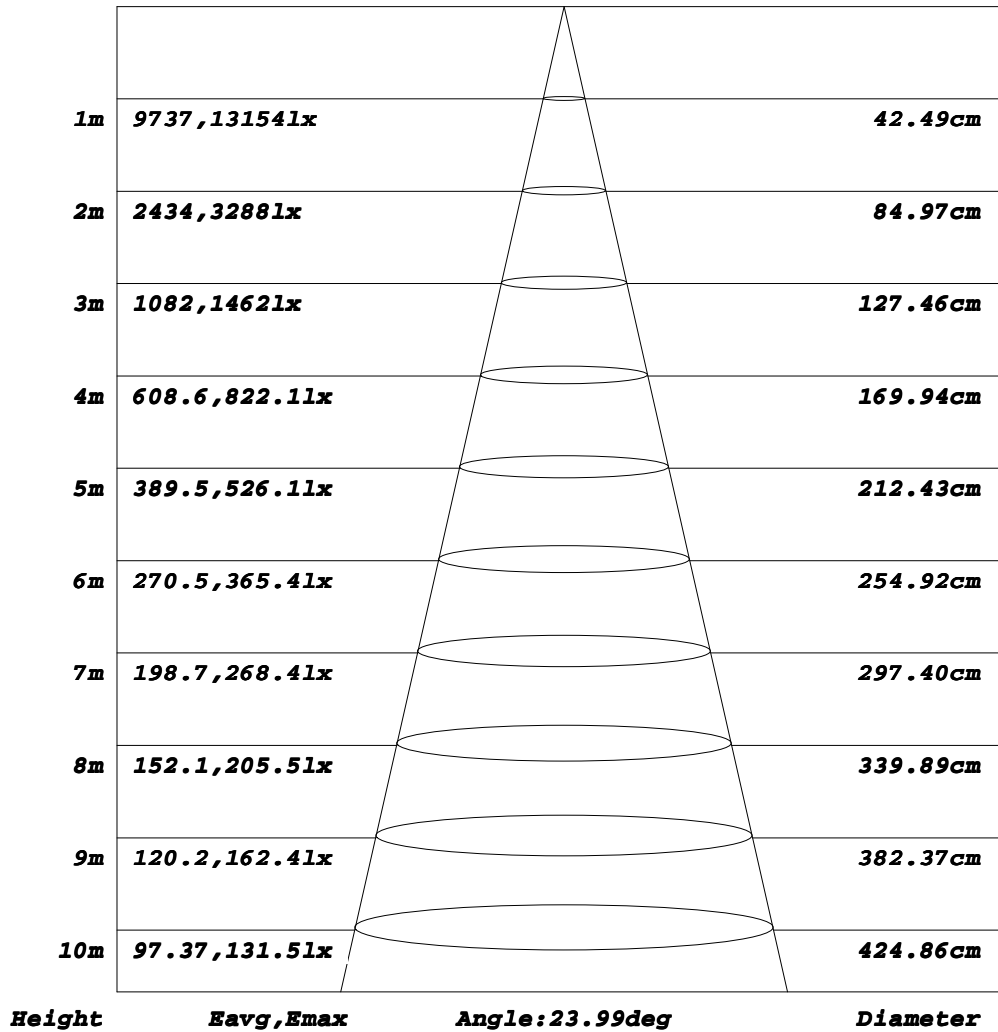
C Range: 0 - 360DEG
C Interval: 30.0DEG
Test Speed: HIGH
Temperature: 25.3DEG
Operators: DAMIN
Test Date: 2022-05-14

γ Range: 0 - 180DEG
γ Interval: 1.0DEG
Test System: EVERFINE GO-2000A_V1 SYSTEM V2.00.443
Humidity: 65.0%
Test Distance: 8.000m [K=0.7063]
Remarks:

AAI Figure

Test:U:221.60V I:0.1430A P:30.200W PF:0.9830 Freq:50.00Hz		
Lamp Flux:3094.4lx1 lm		
Name: NS15-φ138mm-30W	Type: LED	
MFR.: Lumega Group	DIM.: D138*H150mm	
	SUR.: D110mm	

Flux out:1382 lm



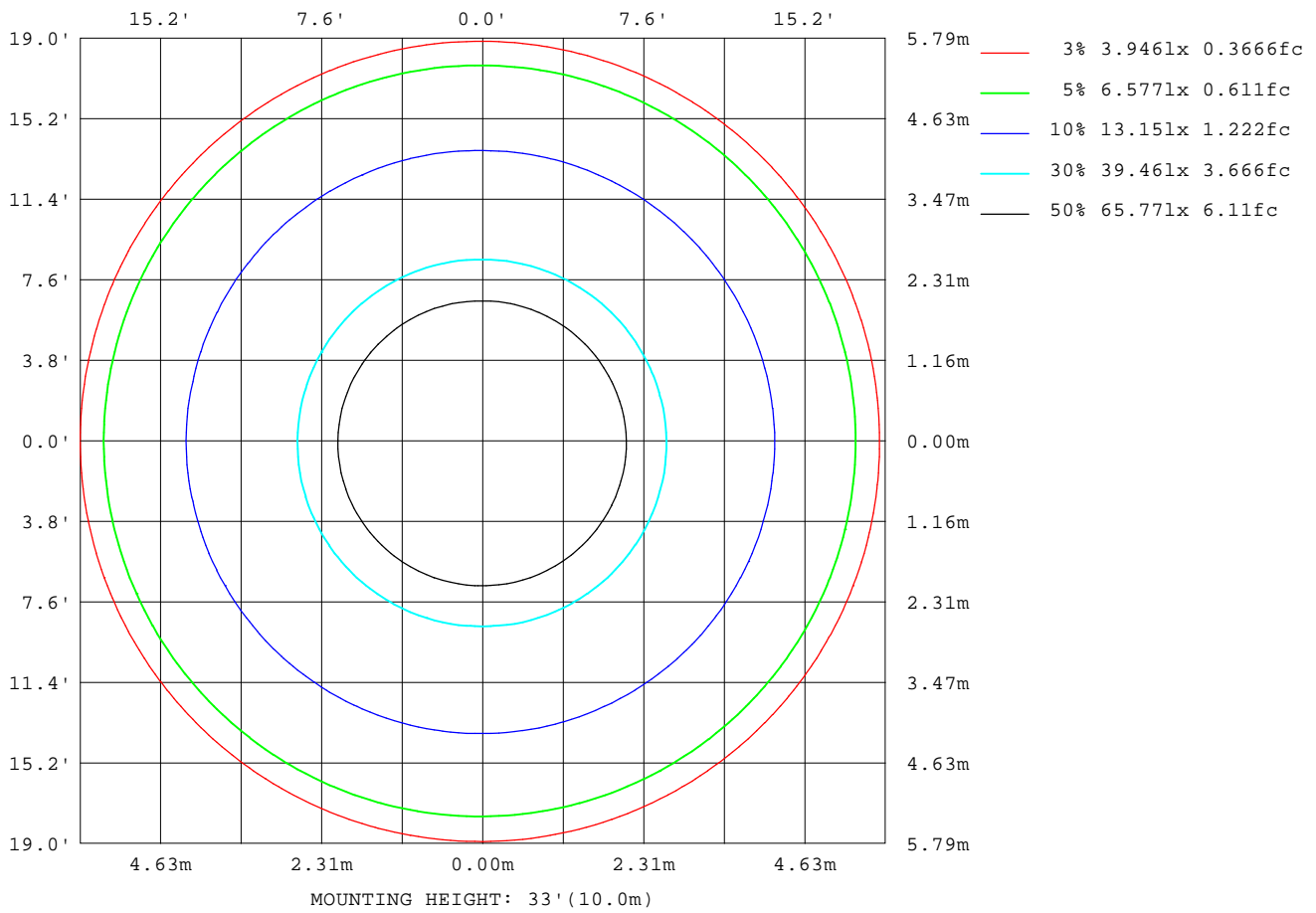
Note: The Curves indicate the illuminated area and the average illumination when the luminaire is at different distance.

C Range: 0 - 360DEG
C Interval: 30.0DEG
Test Speed: HIGH
Temperature: 25.3DEG
Operators: DAMIN
Test Date: 2022-05-14

γ Range: 0 - 180DEG
γ Interval: 1.0DEG
Test System: EVERFINE GO-2000A_V1 SYSTEM V2.00.443
Humidity: 65.0%
Test Distance: 8.000m [K=0.7063]
Remarks:

ISOLUX DIAGRAM

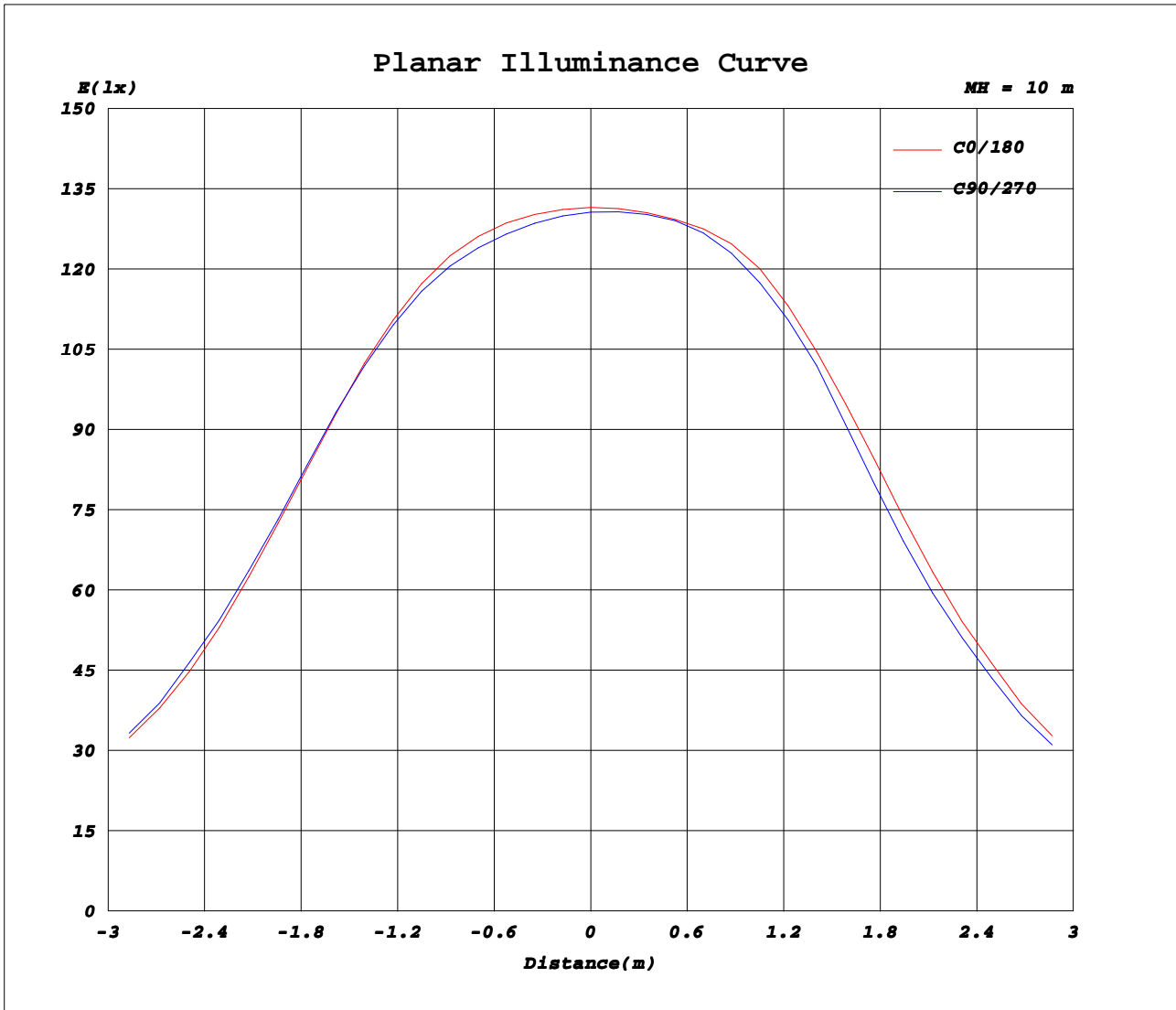
Test:U:221.60V I:0.1430A P:30.200W PF:0.9830 Freq:50.00Hz		
Lamp Flux:3094.41x1 lm		
Name: NS15-φ138mm-30W	Type: LED	
MFR.: Lumega Group	DIM.: D138*H150mm	
	SUR.: D110mm	



C Range: 0 - 360DEG
C Interval: 30.0DEG
Test Speed: HIGH
Temperature: 25.3DEG
Operators: DAMIN
Test Date: 2022-05-14

γ Range: 0 - 180DEG
γ Interval: 1.0DEG
Test System: EVERFINE GO-2000A_V1 SYSTEM V2.00.443
Humidity: 65.0%
Test Distance: 8.000m [K=0.7063]
Remarks:

Planar Illuminance Curve



C Range: 0 - 360DEG
C Interval: 30.0DEG
Test Speed: HIGH
Temperature: 25.3DEG
Operators: DAMIN
Test Date: 2022-05-14

γ Range: 0 - 180DEG
γ Interval: 1.0DEG
Test System: EVERFINE GO-2000A_V1 SYSTEM V2.00.443
Humidity: 65.0%
Test Distance: 8.000m [K=0.7063]
Remarks:

LUMINOUS DISTRIBUTION INTENSITY DATA

Test:U:221.60V I:0.1430A P:30.200W PF:0.9830 Freq:50.00Hz Lamp Flux:3094.41x1 lm		
Name: NS15-φ138mm-30W	Type: LED	
MFR.: Lumega Group	DIM.: D138*H150mm	
	SUR.: D110mm	

Table--1

UNIT: x10cd

C(DEG) γ (DEG)	0	30	60	90	120	150	180	210	240	270	300	330							
0	1315	1310	1308	1307	1309	1313	1315	1313	1309	1307	1308	1310							
5	1239	1226	1219	1220	1233	1248	1262	1259	1252	1244	1241	1239							
10	866	868	870	873	879	883	884	867	850	836	837	847							
15	422	426	430	432	433	432	430	421	412	405	406	411							
20	224	224	224	225	226	227	227	225	222	220	220	222							
25	140	140	140	140	142	144	146	144	143	141	140	140							
30	52.5	55.1	57.2	59.0	60.7	61.8	62.1	60.7	58.7	56.6	55.0	53.7							
35	2.08	2.18	2.30	2.44	2.68	2.89	3.03	2.91	2.72	2.49	2.34	2.20							
40	0.84	0.80	0.81	0.86	1.00	1.16	1.29	1.30	1.26	1.19	1.10	0.98							
45	0.48	0.46	0.46	0.50	0.58	0.67	0.75	0.76	0.74	0.69	0.64	0.57							
50	0.32	0.30	0.30	0.32	0.38	0.45	0.51	0.51	0.50	0.47	0.43	0.38							
55	0.21	0.20	0.21	0.22	0.25	0.29	0.32	0.32	0.32	0.30	0.28	0.25							
60	0.10	0.09	0.09	0.10	0.13	0.16	0.18	0.19	0.19	0.18	0.16	0.13							
65	0.08	0.06	0.06	0.08	0.12	0.17	0.21	0.23	0.23	0.22	0.19	0.14							
70	0.07	0.04	0.04	0.07	0.13	0.21	0.28	0.31	0.31	0.29	0.24	0.16							
75	0.06	0.02	0.02	0.06	0.15	0.26	0.36	0.39	0.39	0.36	0.29	0.19							
80	0.05	0.01	0.01	0.05	0.17	0.31	0.43	0.47	0.47	0.43	0.35	0.22							
85	0.05	0.01	0.01	0.05	0.19	0.35	0.49	0.53	0.54	0.49	0.39	0.25							
90	0.08	0.03	0.03	0.08	0.22	0.38	0.52	0.57	0.57	0.52	0.42	0.27							
95	0.11	0.06	0.06	0.11	0.25	0.41	0.55	0.60	0.61	0.56	0.46	0.31							
100	0.15	0.09	0.09	0.14	0.29	0.45	0.60	0.65	0.65	0.60	0.50	0.35							
105	0.23	0.17	0.17	0.21	0.35	0.50	0.64	0.69	0.69	0.65	0.55	0.41							
110	0.36	0.31	0.30	0.34	0.47	0.61	0.74	0.79	0.79	0.75	0.67	0.54							
115	0.53	0.47	0.47	0.51	0.64	0.78	0.92	0.97	0.97	0.93	0.84	0.71							
120	0.70	0.64	0.63	0.67	0.81	0.98	1.12	1.17	1.18	1.13	1.04	0.89							
125	0.93	0.85	0.84	0.88	1.02	1.18	1.33	1.38	1.38	1.33	1.24	1.11							
130	1.24	1.16	1.14	1.17	1.30	1.45	1.59	1.63	1.63	1.59	1.51	1.40							
135	1.64	1.57	1.54	1.57	1.67	1.80	1.92	1.95	1.95	1.91	1.85	1.76							
140	2.17	2.10	2.07	2.07	2.16	2.25	2.34	2.36	2.36	2.33	2.29	2.24							
145	2.77	2.68	2.63	2.63	2.71	2.80	2.88	2.89	2.87	2.83	2.81	2.79							
150	3.37	3.26	3.20	3.20	3.28	3.39	3.48	3.46	3.41	3.36	3.35	3.35							
155	3.93	3.82	3.75	3.74	3.83	3.93	4.02	3.97	3.91	3.84	3.84	3.87							
160	4.44	4.31	4.24	4.23	4.31	4.42	4.50	4.41	4.31	4.22	4.24	4.31							
165	4.83	4.71	4.63	4.61	4.69	4.78	4.85	4.72	4.58	4.47	4.51	4.63							
170	4.96	4.85	4.77	4.75	4.82	4.90	4.94	4.79	4.63	4.51	4.56	4.71							
175	4.91	4.77	4.67	4.62	4.68	4.74	4.78	4.61	4.44	4.32	4.40	4.60							
180	4.85	4.62	4.49	4.45	4.58	4.74	4.86	4.73	4.56	4.43	4.48	4.61							

C Range: 0 - 360DEG
C Interval: 30.0DEG
Test Speed: HIGH
Temperature:25.3DEG
Operators:DAMIN
Test Date:2022-05-14

γ Range: 0 - 180DEG
γ Interval: 1.0DEG
Test System:EVERFINE GO-2000A_V1 SYSTEM V2.00.443
Humidity:65.0%
Test Distance:8.000m [K=0.7063]
Remarks: