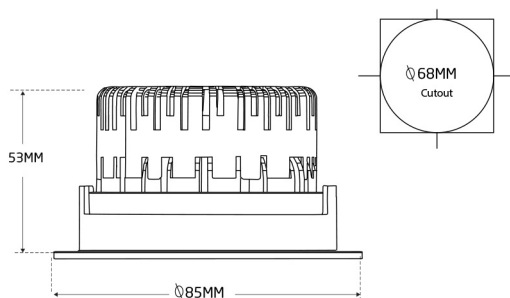
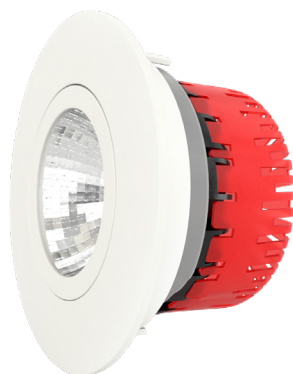


Datasheet

Type: NS17
Itemnr.: 1700510930001



Technical Data

Lumen	490lm
Beam Angle	36dg reflector
Colors Available	Warm white, Neutral white
Color Temperature	2700K, 3000K, 4000K (Opt. dim-to-warm)
Color Rendering	CRI90 (Option CRI97+)
MacAdam	Step 3 (Option Step 1 or 2)
Color Bin	S6
Consumption	7W
Voltage Range	220 ~ 240VAC 50/60Hz (external driver)
Current LEDs	350mA (15V)
PF Power Factor	>95 @ Full load
Flicker	<1 % Flicker free (IEEE Std. 1789-2015)
10A Fuse Type C	Max. 26 luminaires (Start Current limit)
Leakage current	< 0,5mA @ 240V AC (custom possible)
Efficiency	70 lm/W (LEDs 100 lm/W) custom possible
Equal To	NS14 7W = Halogen bulb 50W
Lifetime TM-21	50K hours at Ta = 25°C (L70) B10
Lifetime LEDs	85K hours at Ta = 25°C (L70) B10
Lifetime driver	50K hours at Ta = 25°C (MTBF) B10
Driver Options	Yes Triac/Leading edge (option DALI)
IP Code	IP65 (usefull for Zone 1)
IK Class	IK05
Class	2, Double Insulated
Working temp	-20 to 45 degree Celsius
Size	Ø85 x H53 mm
Cut out	Ø68 mm
Installation	Recessed, one driver for each luminaire
Linkable cables	Yes, entry for two cable
Material used	Die cast aluminum, Glass frontglass
Weight	0,4 Kg
Shipping	Package of 48 pcs
IES File	Yes
Certificates	CE, ROHS, TM21, LM80, IES
Other	ENEC, only for driver unit
Warranty	5 years*
Housing	White, black, chrome, silver or optional
Included	Complete lamp housing, LED, driver

Lumega Europe ApS
Phone +4571995825
info@lumega.eu
www.lumega.eu

