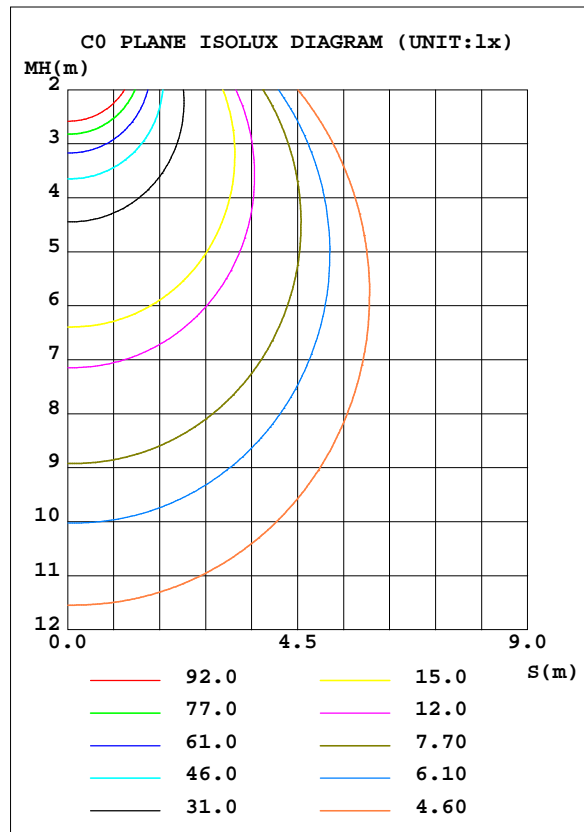
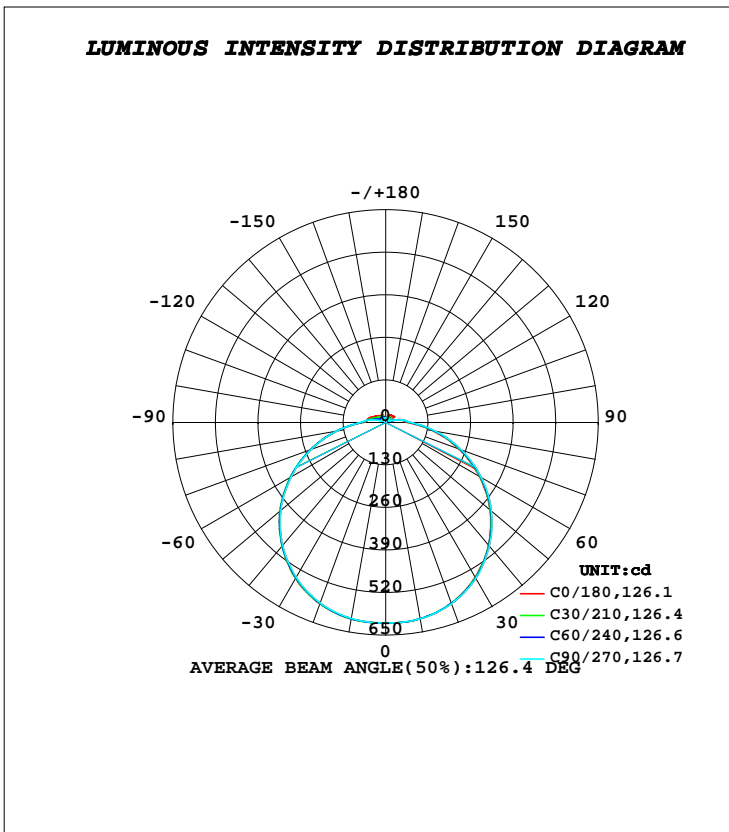


LUMINAIRE PHOTOMETRIC TEST REPORT

Test:U:221.80V I:0.0880A P:18.000W PF:0.9170 Freq:50.00Hz		
Lamp Flux:2311.37x1 lm		
Name: NS43-φ300mm-18W	Type: LED	
MFR.: Lumega Group	DIM.: D300*65mm	
	SUR.: D300mm	

DATA OF LAMP		PHOTOMETRIC DATA Eff: 128.41 lm/W			
MODEL		I _{max} (cd)	613.3	S/MH(C0/180)	1.32
NOMINAL POWER(W)	18	LOR(%)	100.0	S/MH(C90/270)	1.33
RATED VOLTAGE(V)	220	TOTAL FLUX(lm)	2311.4	η UP, DN(C0-180)	3.9,46.0
NOMINAL FLUX(lm)	2311.37	CIE CLASS	DIRECT	η UP, DN(C180-360)	4.2,45.9
LAMPS INSIDE	1	η up(%)	8.1	CIBSE SHR NOM	1.50
TEST VOLTAGE(V)	221	η down(%)	91.9	CIBSE SHR MAX	1.55



C Range: 0 - 360DEG
C Interval: 30.0DEG
Test Speed: HIGH
Temperature:25.3DEG
Operators:DAMIN
Test Date:2022-05-09

γ Range: 0 - 180DEG
γ Interval: 1.0DEG
Test System:EVERFINE GO-2000A_V1 SYSTEM V2.00.443
Humidity:65.0%
Test Distance:8.000m [K=0.7063]
Remarks:

ZONAL FLUX DIAGRAM

ZONAL FLUX DIAGRAM:

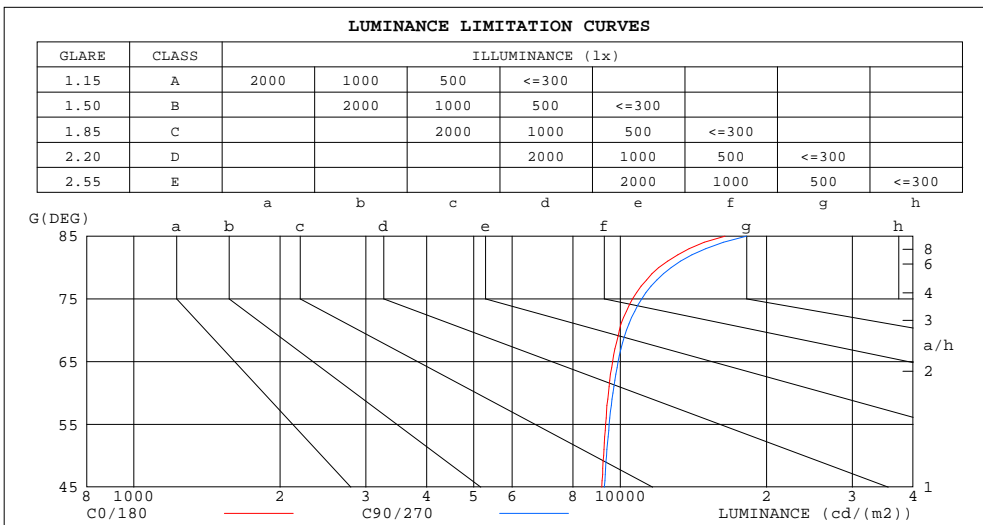
γ	C0	C45	C90	C135	C180	C225	C270	C315	γ	Φ zone	Φ total	%lum,lamp
10	609.2	609.2	609.3	609.6	609.7	608.9	608.1	608.4	0- 10	58.37	58.37	2.53,2.53
20	587.3	588.3	589.1	589.5	589.5	588.0	586.6	586.6	10- 20	169.8	228.2	9.87,9.87
30	546.9	549.3	550.8	551.3	551.0	549.0	547.0	546.5	20- 30	263.3	491.4	21.3,21.3
40	488.9	491.5	493.2	493.7	493.4	491.6	489.7	489.0	30- 40	326.7	818.2	35.4,35.4
50	416.1	419.4	421.7	422.6	422.3	420.2	417.9	416.7	40- 50	352.8	1171	50.7,50.7
60	331.0	335.6	338.4	338.6	337.5	335.8	333.8	332.3	50- 60	338.6	1510	65.3,65.3
70	238.6	243.7	246.8	246.7	245.5	244.7	243.4	241.3	60- 70	287.3	1797	77.7,77.7
80	146.0	151.6	154.8	154.5	152.8	151.8	150.5	148.5	70- 80	208.5	2005	86.8,86.8
90	67.61	74.69	77.76	74.00	69.92	73.69	77.26	74.32	80- 90	118.5	2124	91.9,91.9
100	49.76	46.64	46.45	51.80	56.33	51.37	45.75	46.14	90-100	66.65	2191	94.8,94.8
110	16.62	13.73	17.45	34.46	48.06	34.94	18.24	14.30	100-110	38.03	2229	96.4,96.4
120	25.28	13.06	10.35	24.91	38.16	25.57	11.43	13.85	110-120	20.66	2249	97.3,97.3
130	29.98	17.76	13.52	23.35	32.98	24.04	14.64	18.57	120-130	19.12	2268	98.1,98.1
140	26.75	18.03	14.76	21.01	27.31	21.65	15.81	18.79	130-140	16.11	2284	98.8,98.8
150	27.59	19.10	15.56	20.52	25.80	21.27	16.81	20.00	140-150	12.89	2297	99.4,99.4
160	20.44	14.44	12.20	16.49	20.92	17.64	14.10	15.81	150-160	8.908	2306	99.8,99.8
170	11.78	11.72	11.76	12.00	12.22	12.14	11.99	11.88	160-170	3.950	2310	100,100
180	12.33	12.32	12.31	12.32	12.33	12.32	12.30	12.31	170-180	1.150	2311	100,100
DEG	LUMINOUS INTENSITY:cd									UNIT:lm		

C Range: 0 - 360DEG
C Interval: 30.0DEG
Test Speed: HIGH
Temperature:25.3DEG
Operators:DAMIN
Test Date:2022-05-09

γ Range: 0 - 180DEG
 γ Interval: 1.0DEG
Test System:EVERFINE GO-2000A_V1 SYSTEM V2.00.443
Humidity:65.0%
Test Distance:8.000m [K=0.7063]
Remarks:

LUMINANCE LIMITATION CURVES

Test:U:221.80V I:0.0880A P:18.000W PF:0.9170 Freq:50.00Hz		
Lamp Flux:2311.37x1 lm		
Name: NS43-φ300mm-18W	Type: LED	
MFR.: Lumega Group	DIM.: D300*65mm	
	SUR.: D300mm	



LUMINANCE cd/(m2)		
G(DEG)	C0/180	C90/270
85	16421	18187
80	12011	12737
75	10603	11071
70	9965	10307
65	9645	9908
60	9457	9668
55	9336	9493
50	9248	9371
45	9162	9279

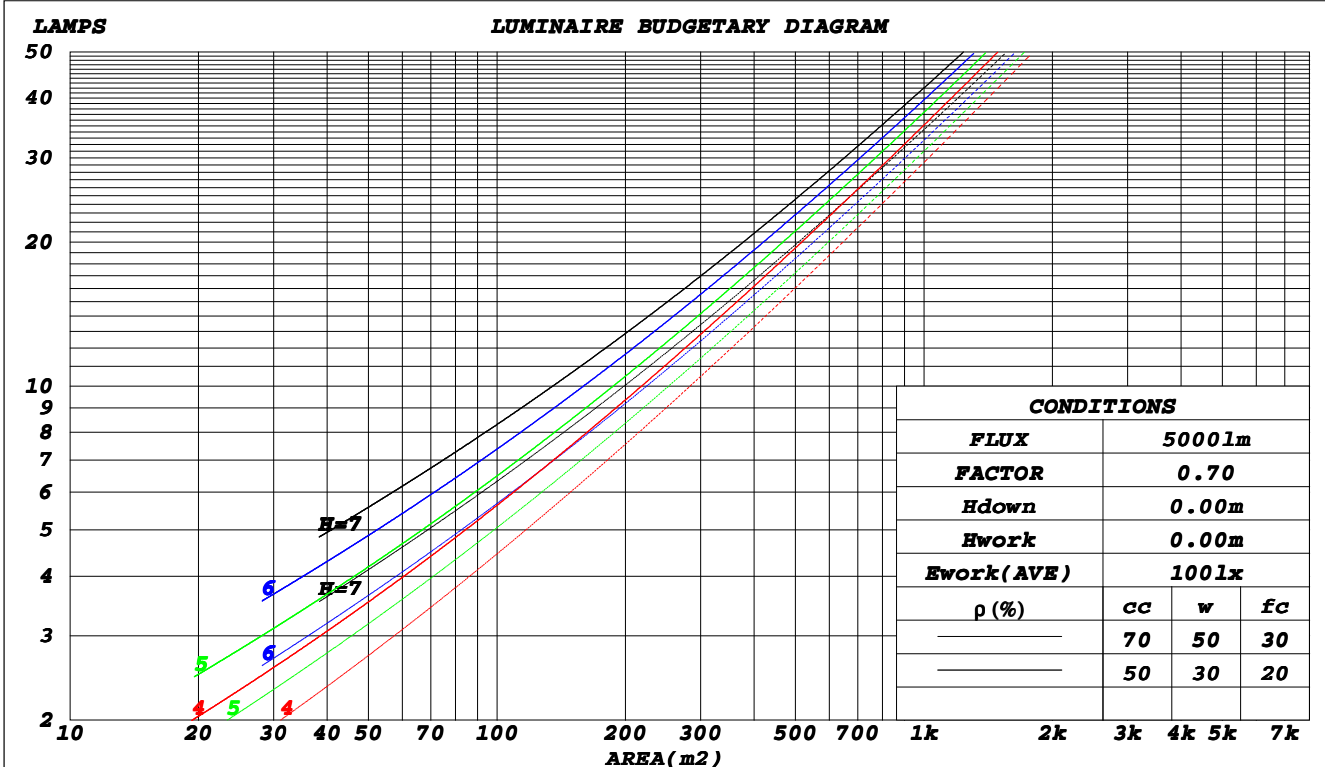
C Range: 0 - 360DEG
C Interval: 30.0DEG
Test Speed: HIGH
Temperature: 25.3DEG
Operators: DAMIN
Test Date: 2022-05-09

γ Range: 0 - 180DEG
γ Interval: 1.0DEG
Test System: EVERFINE GO-2000A_V1 SYSTEM V2.00.443
Humidity: 65.0%
Test Distance: 8.000m [K=0.7063]
Remarks:

CU AND LUMINAIRE BUDGETARY ESTIMATE DIAGRAM

Test:U:221.80V I:0.0880A P:18.000W PF:0.9170 Freq:50.00Hz		
Lamp Flux:2311.37x1 lm		
Name: NS43-φ300mm-18W	Type: LED	
MFR.: Lumega Group	DIM.: D300*65mm	
	SUR.: D300mm	

ρ _{cc}	80%			70%			50%			30%			10%			0
ρ _w	50%	30%	10%	50%	30%	10%	50%	30%	10%	50%	30%	10%	50%	30%	10%	0
ρ _{fc}	20%			20%			20%			20%			20%			0
RCR	RCR:Room Cavity Ratio						Coefficients of Utilization(CU)									
0.0	1.17	1.17	1.17	1.13	1.13	1.13	1.07	1.07	1.07	1.00	1.00	1.00	.95	.95	.95	.92
1.0	.99	.94	.90	.96	.92	.88	.90	.87	.83	.85	.82	.79	.80	.78	.76	.73
2.0	.86	.78	.72	.83	.76	.70	.78	.72	.67	.73	.69	.64	.69	.65	.62	.59
3.0	.74	.66	.59	.72	.64	.58	.68	.61	.55	.64	.58	.53	.60	.56	.51	.49
4.0	.65	.56	.49	.64	.55	.48	.60	.53	.47	.57	.50	.45	.54	.48	.44	.41
5.0	.58	.49	.42	.57	.48	.41	.53	.46	.40	.51	.44	.39	.48	.42	.38	.35
6.0	.52	.43	.36	.51	.42	.36	.48	.40	.35	.46	.39	.34	.43	.37	.33	.31
7.0	.47	.38	.32	.46	.37	.31	.44	.36	.31	.41	.35	.30	.39	.33	.29	.27
8.0	.43	.34	.28	.42	.34	.28	.40	.32	.27	.38	.31	.26	.36	.30	.26	.24
9.0	.39	.31	.25	.38	.30	.25	.37	.29	.24	.35	.28	.24	.33	.27	.23	.21
10.0	.36	.28	.23	.35	.28	.22	.34	.27	.22	.32	.26	.21	.31	.25	.21	.19



C Range: 0 - 360DEG
 C Interval: 30.0DEG
 Test Speed: HIGH
 Temperature: 25.3DEG
 Operators: DAMIN
 Test Date: 2022-05-09

γ Range: 0 - 180DEG
 γ Interval: 1.0DEG
 Test System: EVERFINE GO-2000A_V1 SYSTEM V2.00.443
 Humidity: 65.0%
 Test Distance: 8.000m [K=0.7063]
 Remarks:

WEC AND CCEC

Test:U:221.80V I:0.0880A P:18.000W PF:0.9170 Freq:50.00Hz		
Lamp Flux:2311.37x1 lm		
Name: NS43-φ300mm-18W	Type: LED	
MFR.: Lumega Group	DIM.: D300*65mm	
	SUR.: D300mm	

ρ _{cc}	80%			70%			50%			30%			10%			0
ρ _w	50%	30%	10%	50%	30%	10%	50%	30%	10%	50%	30%	10%	50%	30%	10%	0
ρ _{fc}	20%			20%			20%			20%			20%			0
RCR	RCR:Room Cavity Ratio						Wall Exitance Coefficients(WEC)									
0.0																
1.0	.358	.204	.064	.348	.199	.063	.330	.189	.061	.314	.181	.058	.298	.173	.056	
2.0	.320	.176	.054	.312	.172	.053	.295	.164	.051	.281	.157	.049	.267	.151	.048	
3.0	.289	.154	.046	.281	.151	.045	.267	.145	.044	.253	.139	.043	.241	.133	.041	
4.0	.263	.137	.040	.256	.134	.040	.243	.129	.038	.231	.124	.037	.219	.119	.036	
5.0	.240	.122	.035	.234	.120	.035	.222	.116	.034	.211	.111	.033	.201	.107	.032	
6.0	.221	.111	.032	.215	.109	.031	.205	.105	.031	.195	.101	.030	.186	.098	.029	
7.0	.204	.101	.029	.199	.099	.028	.190	.096	.028	.181	.093	.027	.172	.090	.026	
8.0	.190	.093	.026	.186	.091	.026	.177	.088	.025	.169	.085	.025	.161	.083	.024	
9.0	.177	.086	.024	.173	.084	.024	.165	.082	.023	.158	.079	.023	.151	.077	.022	
10.0	.166	.080	.022	.163	.079	.022	.155	.076	.021	.148	.074	.021	.142	.071	.020	

ρ _{cc}	80%			70%			50%			30%			10%			0
ρ _w	50%	30%	10%	50%	30%	10%	50%	30%	10%	50%	30%	10%	50%	30%	10%	0
ρ _{fc}	20%			20%			20%			20%			20%			0
RCR	RCR:Room Cavity Ratio						Ceiling Cavity Exitance Coefficients(CCEC)									
0.0	.252	.252	.252	.216	.216	.216	.147	.147	.147	.085	.085	.085	.027	.027	.027	
1.0	.246	.218	.193	.210	.187	.166	.144	.129	.115	.083	.074	.067	.027	.024	.022	
2.0	.239	.194	.157	.205	.167	.136	.140	.116	.095	.081	.067	.056	.026	.022	.018	
3.0	.231	.177	.135	.198	.153	.117	.136	.106	.082	.079	.062	.048	.025	.020	.016	
4.0	.224	.165	.120	.192	.142	.104	.132	.099	.073	.076	.058	.043	.025	.019	.014	
5.0	.216	.155	.109	.185	.134	.095	.128	.093	.067	.074	.055	.040	.024	.018	.013	
6.0	.209	.146	.102	.179	.127	.089	.124	.089	.063	.072	.052	.037	.023	.017	.012	
7.0	.201	.140	.096	.173	.121	.084	.120	.085	.059	.070	.050	.035	.022	.016	.012	
8.0	.195	.134	.092	.168	.116	.080	.116	.082	.057	.068	.048	.034	.022	.016	.011	
9.0	.189	.129	.089	.162	.112	.078	.113	.079	.055	.066	.047	.033	.021	.015	.011	
10.0	.183	.125	.086	.157	.108	.075	.109	.076	.054	.064	.045	.032	.021	.015	.011	

C Range: 0 - 360DEG
C Interval: 30.0DEG
Test Speed: HIGH
Temperature:25.3DEG
Operators:DAMIN
Test Date:2022-05-09

γ Range: 0 - 180DEG
γ Interval: 1.0DEG
Test System:EVERFINE GO-2000A_V1 SYSTEM V2.00.443
Humidity:65.0%
Test Distance:8.000m [K=0.7063]
Remarks:

UGR(Unified Glare Rating) Table

Test:U:221.80V I:0.0880A P:18.000W PF:0.9170 Freq:50.00Hz		
Lamp Flux:2311.37x1 lm		
Name: NS43-φ300mm-18W	Type: LED	
MFR.: Lumega Group	DIM.: D300*65mm	
	SUR.: D300mm	

ceiling/cavity	0.7	0.7	0.5	0.5	0.3	0.7	0.7	0.5	0.5	0.3
walls	0.5	0.3	0.5	0.3	0.3	0.5	0.3	0.5	0.3	0.3
working plane	0.2	0.2	0.2	0.2	0.2	0.2	0.2	0.2	0.2	0.2
Room dimensions	Viewed crosswise					Viewed endwise				
x = 2H y = 2H	20.2	21.7	20.6	22.0	22.4	20.3	21.8	20.7	22.1	22.5
3H	22.1	23.5	22.5	23.9	24.3	22.2	23.6	22.7	24.0	24.4
4H	23.0	24.3	23.5	24.7	25.2	23.2	24.5	23.6	24.9	25.3
6H	23.9	25.2	24.4	25.6	26.0	24.1	25.4	24.6	25.8	26.2
8H	24.4	25.5	24.8	26.0	26.4	24.6	25.8	25.0	26.2	26.7
12H	24.8	25.9	25.2	26.4	26.8	25.0	26.2	25.5	26.6	27.1
4H 2H	20.9	22.2	21.3	22.6	23.0	21.0	22.3	21.4	22.7	23.1
3H	23.0	24.2	23.5	24.6	25.1	23.1	24.3	23.6	24.7	25.2
4H	24.1	25.2	24.6	25.6	26.1	24.2	25.3	24.7	25.8	26.3
6H	25.2	26.1	25.7	26.6	27.2	25.3	26.3	25.9	26.8	27.3
8H	25.7	26.6	26.2	27.1	27.6	25.9	26.8	26.4	27.3	27.8
12H	26.2	27.0	26.8	27.5	28.1	26.5	27.3	27.0	27.8	28.4
8H 4H	24.6	25.4	25.1	25.9	26.5	24.7	25.5	25.2	26.0	26.6
6H	25.8	26.6	26.4	27.1	27.7	26.0	26.7	26.6	27.3	27.9
8H	26.5	27.2	27.1	27.7	28.4	26.7	27.4	27.3	27.9	28.6
12H	27.2	27.8	27.8	28.4	29.0	27.5	28.0	28.1	28.6	29.3
12H 4H	24.6	25.4	25.2	26.0	26.5	24.7	25.5	25.3	26.1	26.6
6H	26.0	26.7	26.6	27.2	27.9	26.2	26.8	26.7	27.4	28.0
8H	26.8	27.3	27.4	27.9	28.6	26.9	27.5	27.5	28.1	28.7
Variations with the observer position at spacings(CIE Pub.117):										
S = 1.0H	+ 0.1 / - 0.1					+ 0.1 / - 0.1				
1.5H	+ 0.2 / - 0.3					+ 0.2 / - 0.3				
2.0H	+ 0.2 / - 0.4					+ 0.2 / - 0.3				

CIE Pub.117, 2311 lm Total Lamp Luminous Flux Corrected (8log(F/F0) = 2.9)
 Area: 0.07 m2

C Range: 0 - 360DEG
C Interval: 30.0DEG
Test Speed: HIGH
Temperature:25.3DEG
Operators:DAMIN
Test Date:2022-05-09

γ Range: 0 - 180DEG
γ Interval: 1.0DEG
Test System:EVERFINE GO-2000A_V1 SYSTEM V2.00.443
Humidity:65.0%
Test Distance:8.000m [K=0.7063]
Remarks:

UTILIZATION FACTORS TABLE

Test:U:221.80V I:0.0880A P:18.000W PF:0.9170 Freq:50.00Hz Lamp Flux:2311.37x1 lm		
Name: NS43-φ300mm-18W	Type: LED	
MFR.: Lumega Group	DIM.: D300*65mm	
	SUR.: D300mm	

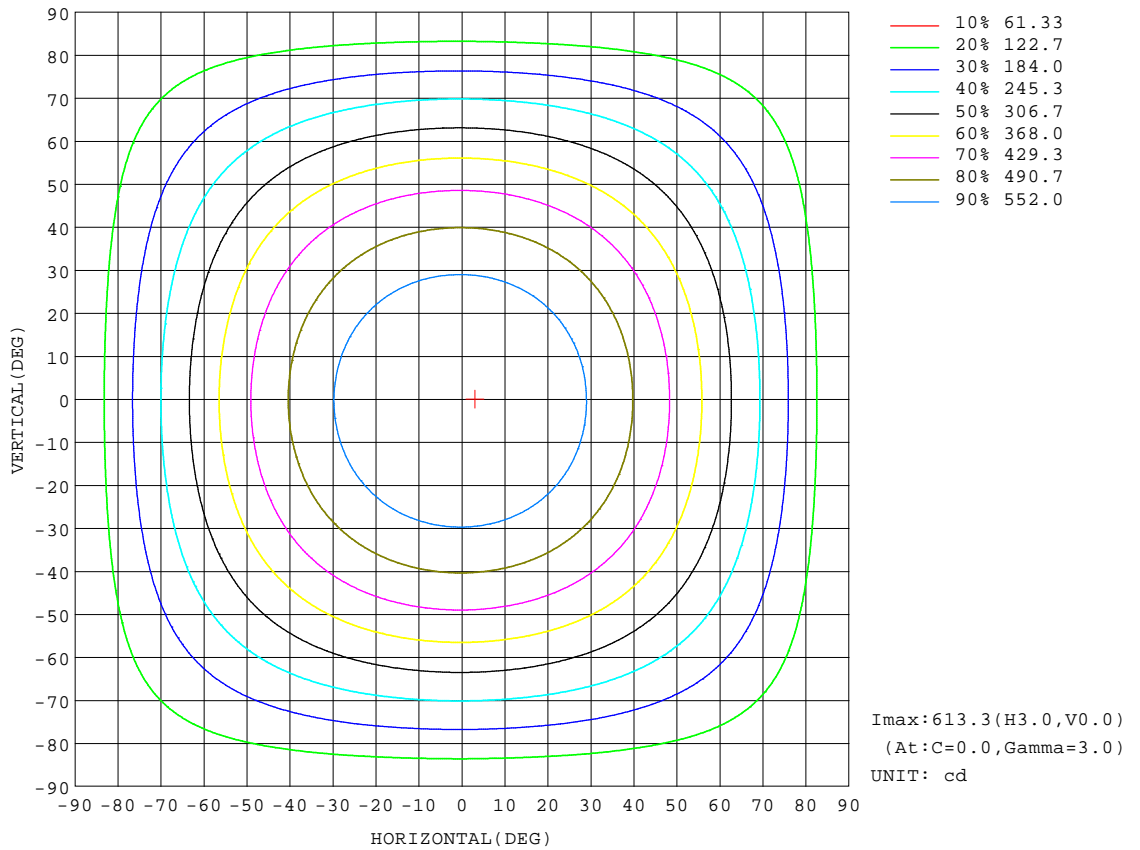
REFLECTANCE										
Ceiling	0.8	0.8	0.8	0.7	0.7	0.7	0.5	0.5	0.5	0
Walls	0.7	0.5	0.3	0.7	0.5	0.3	0.7	0.5	0.3	0
Working plane	0.2	0.2	0.2	0.2	0.2	0.2	0.2	0.2	0.2	0
ROOM INDEX	UTILIZATION FACTORS(PERCENT) $k(RI) \times RCR = 5$									
k = 0.60	52	40	33	51	40	32	50	39	32	25
0.80	62	49	41	60	49	41	58	47	40	33
1.00	70	57	49	68	57	49	65	58	48	40
1.25	77	65	57	75	64	56	71	62	55	47
1.50	82	71	63	80	69	62	76	67	60	51
2.00	89	79	71	87	77	70	82	74	68	59
2.50	93	84	77	91	82	76	86	79	73	63
3.00	97	89	82	94	87	80	89	83	78	67
4.00	101	94	89	98	92	87	93	88	83	72
5.00	104	98	93	101	95	91	95	91	87	75
ROOM INDEX	UF(total)									Direct
According to DIN EN 13032-2 2004			Suspended					SHRNM = 1.25		

C Range: 0 - 360DEG
C Interval: 30.0DEG
Test Speed: HIGH
Temperature:25.3DEG
Operators:DAMIN
Test Date:2022-05-09

γ Range: 0 - 180DEG
γ Interval: 1.0DEG
Test System:EVERFINE GO-2000A_V1 SYSTEM V2.00.443
Humidity:65.0%
Test Distance:8.000m [K=0.7063]
Remarks:

ISOCANDELA DIAGRAM

Test:U:221.80V I:0.0880A P:18.000W PF:0.9170 Freq:50.00Hz		
Lamp Flux:2311.37x1 lm		
Name: NS43-φ300mm-18W	Type: LED	
MFR.: Lumega Group	DIM.: D300*65mm	
	SUR.: D300mm	



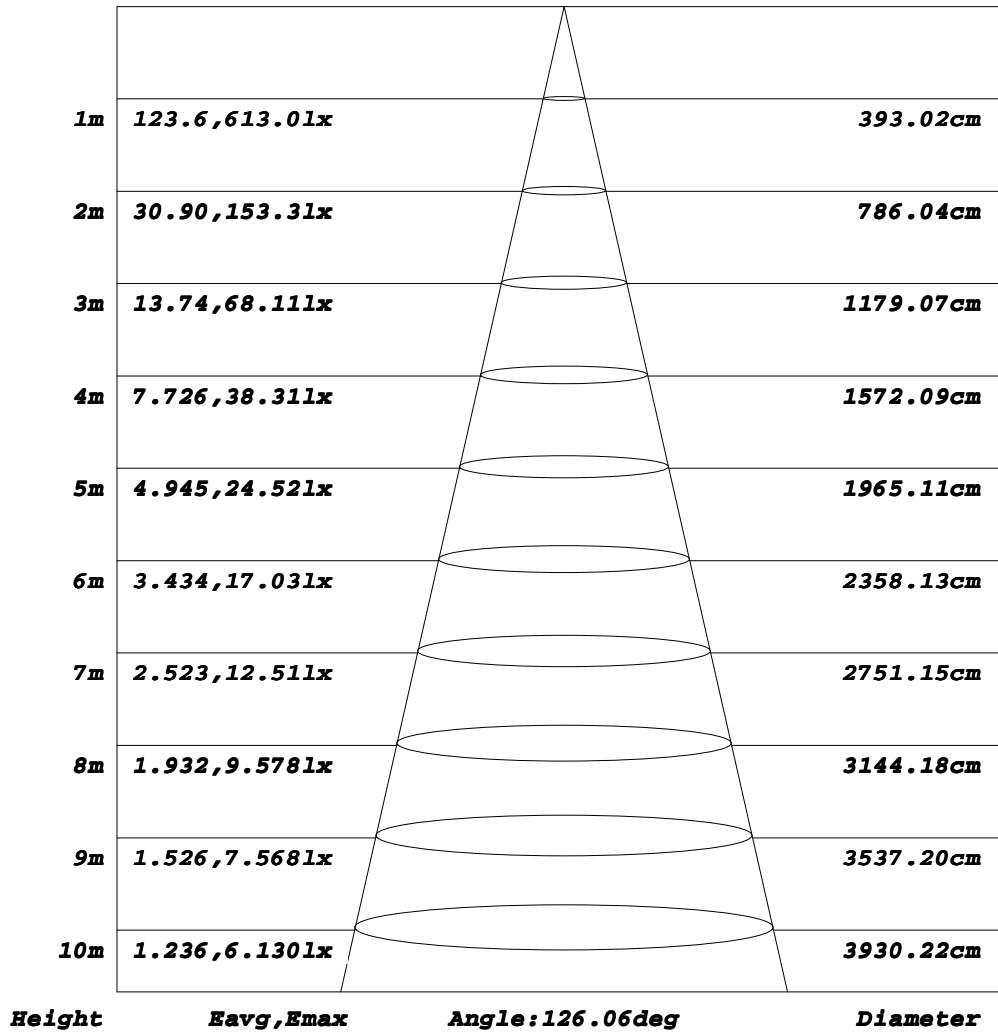
C Range: 0 - 360DEG
C Interval: 30.0DEG
Test Speed: HIGH
Temperature: 25.3DEG
Operators: DAMIN
Test Date: 2022-05-09

γ Range: 0 - 180DEG
γ Interval: 1.0DEG
Test System: EVERFINE GO-2000A_V1 SYSTEM V2.00.443
Humidity: 65.0%
Test Distance: 8.000m [K=0.7063]
Remarks:

AAI Figure

Test:U:221.80V I:0.0880A P:18.000W PF:0.9170 Freq:50.00Hz		
Lamp Flux:2311.37x1 lm		
Name: NS43-φ300mm-18W	Type: LED	
MFR.: Lumega Group	DIM.: D300*65mm	
	SUR.: D300mm	

Flux out:1633 lm



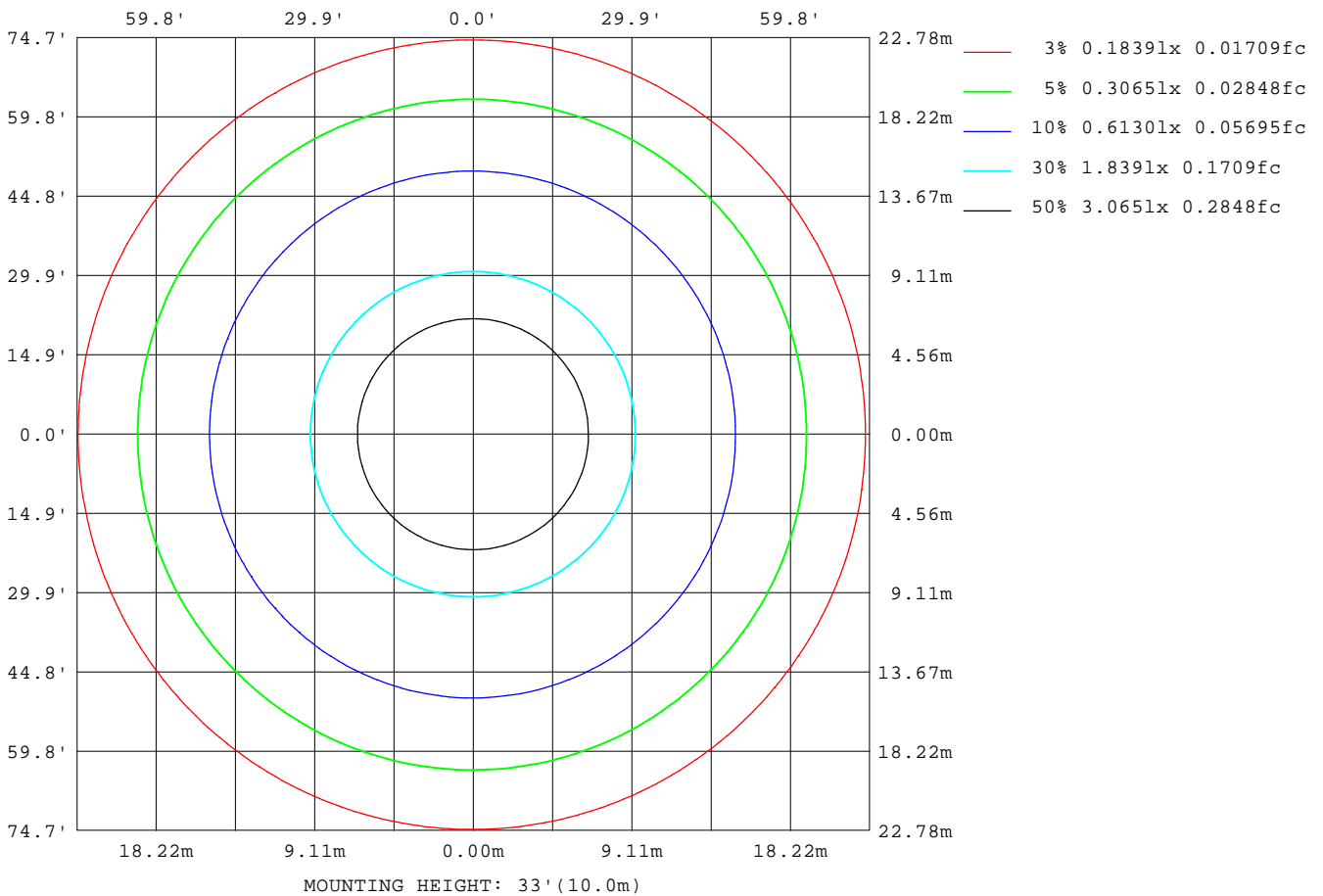
Note: The Curves indicate the illuminated area and the average illumination when the luminaire is at different distance.

C Range: 0 - 360DEG
C Interval: 30.0DEG
Test Speed: HIGH
Temperature: 25.3DEG
Operators: DAMIN
Test Date: 2022-05-09

γ Range: 0 - 180DEG
γ Interval: 1.0DEG
Test System: EVERFINE GO-2000A_V1 SYSTEM V2.00.443
Humidity: 65.0%
Test Distance: 8.000m [K=0.7063]
Remarks:

ISOLUX DIAGRAM

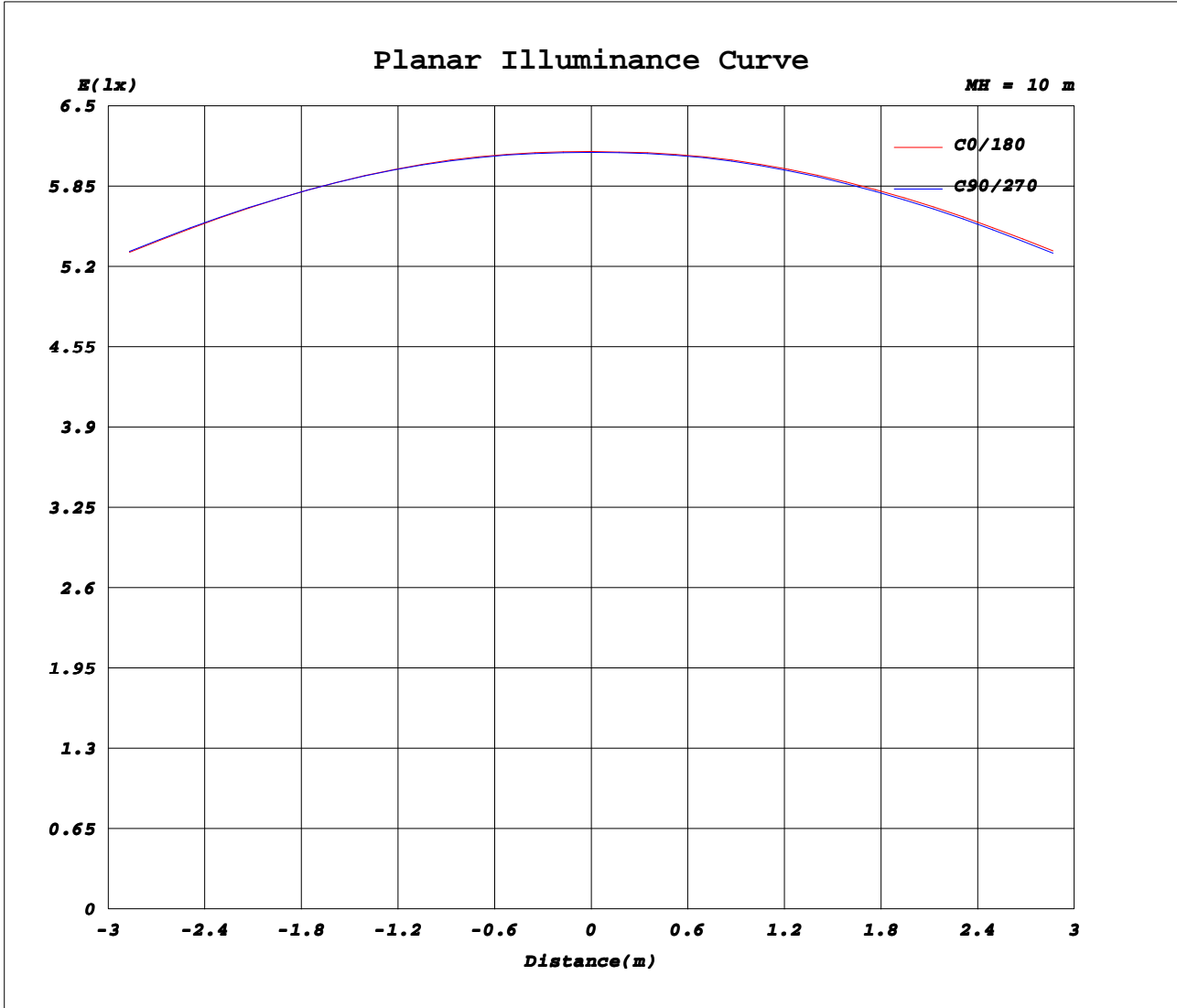
Test:U:221.80V I:0.0880A P:18.000W PF:0.9170 Freq:50.00Hz		
Lamp Flux:2311.37x1 lm		
Name: NS43-φ300mm-18W	Type: LED	
MFR.: Lumega Group	DIM.: D300*65mm	
	SUR.: D300mm	



C Range: 0 - 360DEG
C Interval: 30.0DEG
Test Speed: HIGH
Temperature: 25.3DEG
Operators: DAMIN
Test Date: 2022-05-09

γ Range: 0 - 180DEG
γ Interval: 1.0DEG
Test System: EVERFINE GO-2000A_V1 SYSTEM V2.00.443
Humidity: 65.0%
Test Distance: 8.000m [K=0.7063]
Remarks:

Planar Illuminance Curve



C Range: 0 - 360DEG
C Interval: 30.0DEG
Test Speed: HIGH
Temperature: 25.3DEG
Operators: DAMIN
Test Date: 2022-05-09

γ Range: 0 - 180DEG
γ Interval: 1.0DEG
Test System: EVERFINE GO-2000A_V1 SYSTEM V2.00.443
Humidity: 65.0%
Test Distance: 8.000m [K=0.7063]
Remarks:

LUMINOUS DISTRIBUTION INTENSITY DATA

Test:U:221.80V I:0.0880A P:18.000W PF:0.9170 Freq:50.00Hz Lamp Flux:2311.37x1 lm		
Name: NS43-φ300mm-18W	Type: LED	
MFR.: Lumega Group	DIM.: D300*65mm	
	SUR.: D300mm	

Table--1

UNIT: cd

C(DEG) γ (DEG)	0	30	60	90	120	150	180	210	240	270	300	330							
0	613	613	612	612	613	613	613	613	613	612	612	613							
5	613	613	613	613	613	613	613	613	613	612	612	612	613						
10	609	609	609	609	609	610	610	609	609	608	608	609							
15	601	601	601	601	602	602	602	601	600	600	600	600							
20	587	588	589	589	589	590	589	589	587	587	586	587							
25	569	571	571	572	573	573	572	571	570	569	569	569							
30	547	549	550	551	551	551	551	550	548	547	547	547							
35	520	521	523	523	524	524	523	522	521	520	520	520							
40	489	491	492	493	494	494	493	492	491	490	489	489							
45	453	456	458	459	460	460	459	458	457	455	454	454							
50	416	419	420	422	422	423	422	421	419	418	417	416							
55	375	378	380	381	382	381	381	380	378	377	376	376							
60	331	334	337	338	339	338	337	336	335	334	333	332							
65	285	289	291	293	293	293	292	291	290	289	288	287							
70	239	242	245	247	247	246	246	245	244	243	242	240							
75	192	196	199	201	201	200	199	198	197	196	195	194							
80	146	150	153	155	155	154	153	152	151	150	149	148							
85	100	106	109	111	110	108	106	106	107	108	106	104							
90	67.6	73.0	76.4	77.8	75.5	72.5	69.9	72.3	75.1	77.3	75.9	72.7							
95	56.4	60.1	62.5	63.6	62.3	60.4	58.8	60.3	62.1	63.4	62.3	60.0							
100	49.8	47.2	46.1	46.5	49.9	53.7	56.3	53.3	49.4	45.7	45.5	46.8							
105	31.7	27.8	26.9	29.0	37.9	47.0	53.4	46.9	37.8	28.9	26.8	27.7							
110	16.6	13.6	13.9	17.4	28.8	40.1	48.1	40.5	29.4	18.2	14.6	14.0							
115	16.0	11.0	9.67	12.1	22.8	33.8	41.8	34.3	23.6	13.2	10.6	11.6							
120	25.3	15.6	10.6	10.3	19.7	30.1	38.2	30.6	20.5	11.4	11.5	16.2							
125	31.3	20.0	13.6	12.0	19.7	28.9	36.2	29.4	20.6	13.1	14.6	20.6							
130	30.0	20.5	15.0	13.5	19.7	27.0	33.0	27.5	20.5	14.6	16.0	21.1							
135	27.9	20.0	15.4	14.0	19.0	25.0	29.9	25.5	19.9	15.1	16.3	20.6							
140	26.7	20.0	16.0	14.8	18.6	23.4	27.3	23.9	19.4	15.8	17.0	20.6							
145	27.3	20.9	17.0	15.5	18.7	22.8	26.2	23.2	19.5	16.5	17.8	21.4							
150	27.6	21.1	17.1	15.6	18.6	22.5	25.8	23.0	19.5	16.8	18.2	21.8							
155	25.7	19.5	15.8	14.4	17.4	21.3	24.6	22.0	18.7	16.0	17.2	20.4							
160	20.4	15.8	13.1	12.2	14.8	18.1	20.9	19.0	16.3	14.1	14.8	16.9							
165	15.5	13.3	12.0	11.6	13.0	14.6	16.0	14.7	13.1	11.8	12.2	13.4							
170	11.8	11.7	11.7	11.8	11.9	12.1	12.2	12.2	12.1	12.0	11.9	11.8							
175	12.1	12.1	12.1	12.1	12.1	12.1	12.1	12.1	12.1	12.1	12.1	12.1							
180	12.3	12.3	12.3	12.3	12.3	12.3	12.3	12.3	12.3	12.3	12.3	12.3							

C Range: 0 - 360DEG
C Interval: 30.0DEG
Test Speed: HIGH
Temperature: 25.3DEG
Operators: DAMIN
Test Date: 2022-05-09

γ Range: 0 - 180DEG
γ Interval: 1.0DEG
Test System: EVERFINE GO-2000A_V1 SYSTEM V2.00.443
Humidity: 65.0%
Test Distance: 8.000m [K=0.7063]
Remarks: