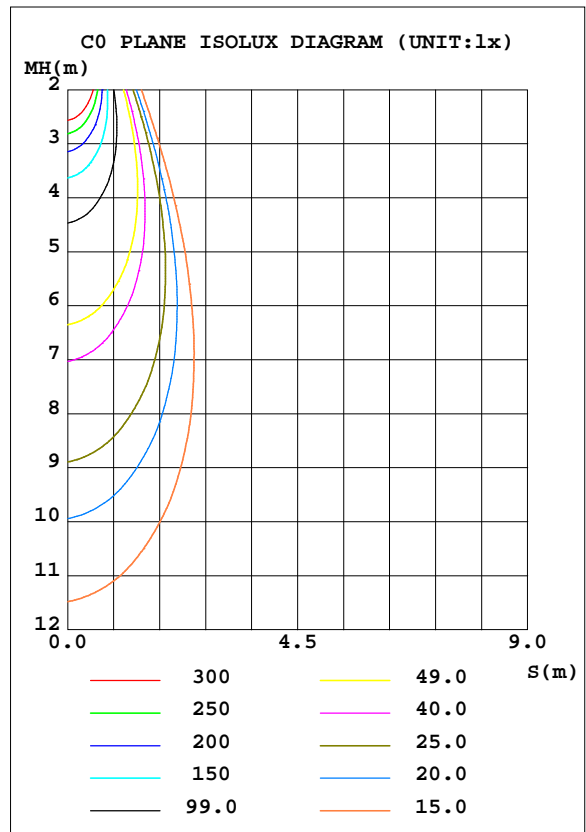
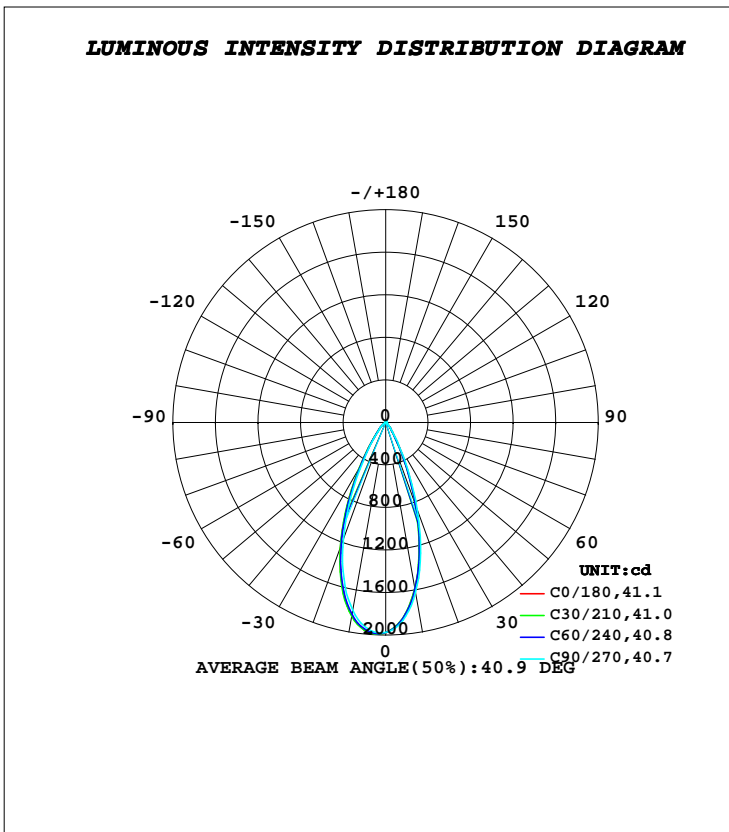


LUMINAIRE PHOTOMETRIC TEST REPORT

Test:U:221.70V I:0.0590A P:10.800W PF:0.8280 Freq:50.00Hz		
Lamp Flux:1079.3lx1 lm		
Name: NS47-φ71mm-10W	Type: LED	
MFR.: Lumega Group	DIM.: D71*100mm	
	SUR.: D65mm	

DATA OF LAMP		PHOTOMETRIC DATA				Eff: 99.94 lm/W
MODEL		I _{max} (cd)	1992	S/MH(C0/180)	0.59	
NOMINAL POWER(W)	10	LOR(%)	100.0	S/MH(C90/270)	0.60	
RATED VOLTAGE(V)	220	TOTAL FLUX(lm)	1079.3	η UP, DN(C0-180)	1.3,42.5	
NOMINAL FLUX(lm)	1079.31	CIE CLASS	DIRECT	η UP, DN(C180-360)	1.4,54.7	
LAMPS INSIDE	1	η up(%)	2.8	CIBSE SHR NOM	0.50	
TEST VOLTAGE(V)	220	η down(%)	97.2	CIBSE SHR MAX	0.70	



C Range: 0 - 360DEG
C Interval: 30.0DEG
Test Speed: HIGH
Temperature:25.3DEG
Operators:DAMIN
Test Date:2022-05-04

γ Range: 0 - 180DEG
γ Interval: 1.0DEG
Test System:EVERFINE GO-2000A_V1 SYSTEM V2.00.443
Humidity:65.0%
Test Distance:8.000m [K=0.7063]
Remarks:

ZONAL FLUX DIAGRAM

ZONAL FLUX DIAGRAM:

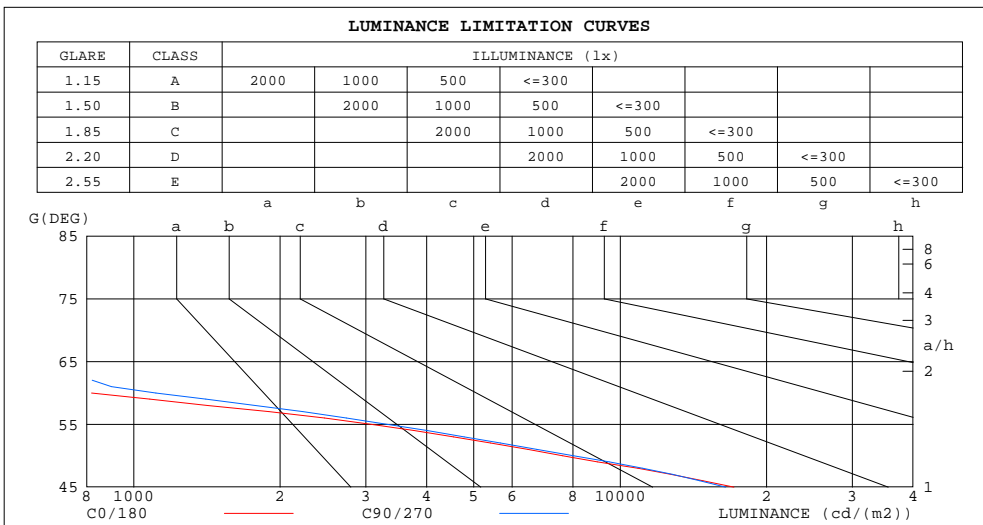
γ	C0	C45	C90	C135	C180	C225	C270	C315	γ	Φ zone	Φ total	%lum,lamp
10	1589	1584	1622	1737	1843	1840	1791	1707	0- 10	176.3	176.3	16.3,16.3
20	835.0	812.2	865.7	1059	1240	1242	1165	1028	10- 20	385.5	561.8	52.1,52.1
30	238.0	218.1	250.4	377.9	498.1	496.8	445.0	358.6	20- 30	300.6	862.4	79.9,79.9
40	77.96	66.31	70.60	103.1	135.0	134.0	121.1	102.8	30- 40	123.2	985.6	91.3,91.3
50	16.16	13.93	17.02	29.34	41.83	45.96	44.23	33.58	40- 50	47.18	1033	95.7,95.7
60	1.351	1.089	1.834	4.301	6.843	8.069	7.999	5.542	50- 60	12.48	1045	96.8,96.8
70	0.4957	0.4381	0.5931	1.126	1.647	1.765	1.638	1.193	60- 70	2.120	1047	97,97
80	0.2510	0.1386	0.2713	0.8323	1.395	1.538	1.427	0.9730	70- 80	1.004	1048	97.1,97.1
90	0.3366	0.1812	0.3053	0.9160	1.532	1.675	1.547	1.078	80- 90	0.9602	1049	97.2,97.2
100	0.8331	0.6757	0.7860	1.361	1.943	2.073	1.950	1.516	90-100	1.247	1051	97.3,97.3
110	1.699	1.561	1.654	2.146	2.643	2.754	2.649	2.280	100-110	1.852	1052	97.5,97.5
120	3.181	3.058	3.089	3.383	3.688	3.761	3.709	3.506	110-120	2.724	1055	97.8,97.8
130	5.426	5.365	5.329	5.330	5.346	5.358	5.375	5.398	120-130	3.873	1059	98.1,98.1
140	8.142	8.170	8.102	7.865	7.638	7.611	7.687	7.870	130-140	5.066	1064	98.6,98.6
150	10.61	10.82	10.85	10.56	10.25	10.19	10.24	10.38	140-150	5.759	1070	99.1,99.1
160	11.23	11.55	11.75	11.80	11.78	11.76	11.68	11.50	150-160	5.198	1075	99.6,99.6
170	10.08	10.52	10.88	11.13	11.27	11.28	11.13	10.70	160-170	3.226	1078	99.9,99.9
180	10.41	10.48	10.52	10.48	10.44	10.47	10.50	10.47	170-180	1.018	1079	100,100
DEG	LUMINOUS INTENSITY:cd									UNIT:lm		

C Range: 0 - 360DEG
C Interval: 30.0DEG
Test Speed: HIGH
Temperature:25.3DEG
Operators:DAMIN
Test Date:2022-05-04

γ Range: 0 - 180DEG
 γ Interval: 1.0DEG
Test System:EVERFINE GO-2000A_V1 SYSTEM V2.00.443
Humidity:65.0%
Test Distance:8.000m [K=0.7063]
Remarks:

LUMINANCE LIMITATION CURVES

Test:U:221.70V I:0.0590A P:10.800W PF:0.8280 Freq:50.00Hz		
Lamp Flux:1079.31lx1 lm		
Name: NS47-φ71mm-10W	Type: LED	
MFR.: Lumega Group	DIM.: D71*100mm	
	SUR.: D65mm	



LUMINANCE cd/(m2)		
G(DEG)	C0/180	C90/270
85	835	815
80	438	473
75	390	449
70	439	526
65	550	674
60	819	1111
55	3083	3326
50	7618	8025
45	17124	16473

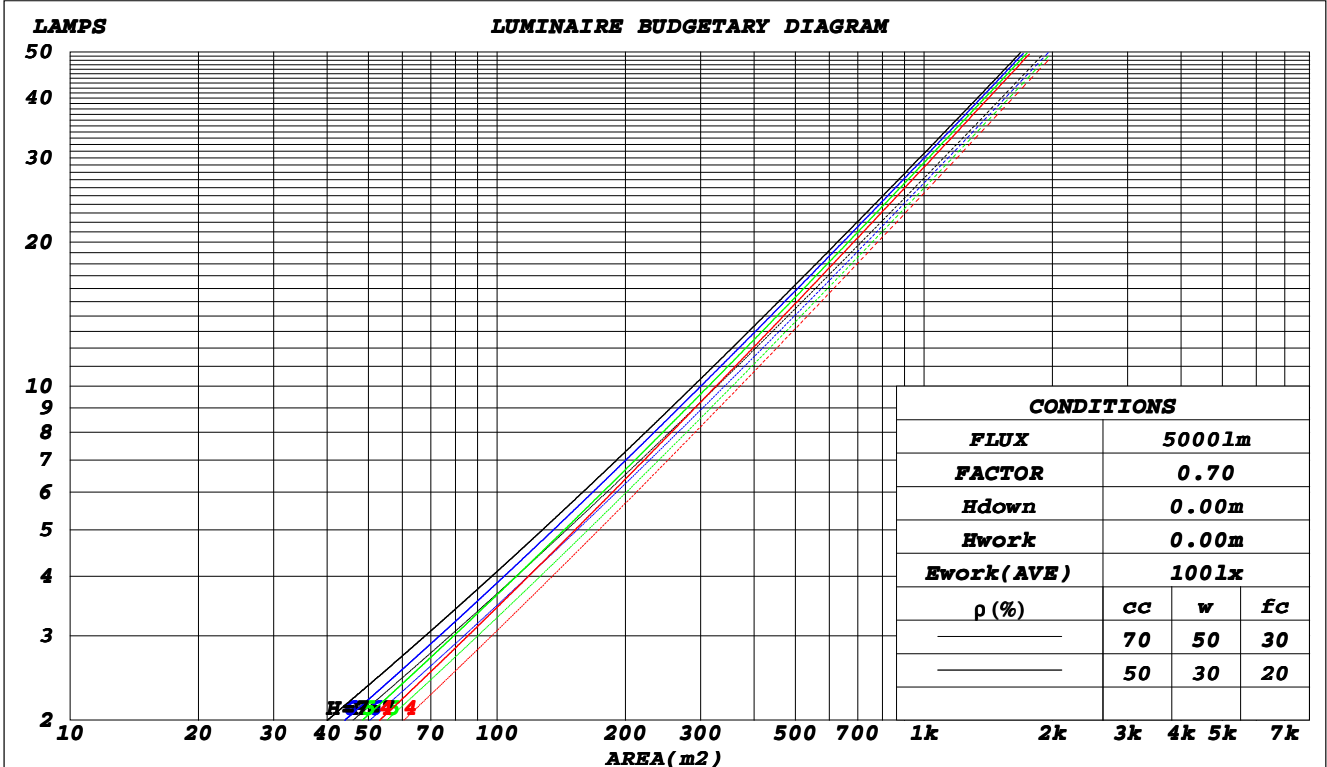
C Range: 0 - 360DEG
C Interval: 30.0DEG
Test Speed: HIGH
Temperature: 25.3DEG
Operators: DAMIN
Test Date: 2022-05-04

γ Range: 0 - 180DEG
γ Interval: 1.0DEG
Test System: EVERFINE GO-2000A_V1 SYSTEM V2.00.443
Humidity: 65.0%
Test Distance: 8.000m [K=0.7063]
Remarks:

CU AND LUMINAIRE BUDGETARY ESTIMATE DIAGRAM

Test:U:221.70V I:0.0590A P:10.800W PF:0.8280 Freq:50.00Hz		
Lamp Flux:1079.31lx1 lm		
Name: NS47-φ71mm-10W	Type: LED	
MFR.: Lumega Group	DIM.: D71*100mm	
	SUR.: D65mm	

ρcc	80%			70%			50%			30%			10%			0
ρw	50%	30%	10%	50%	30%	10%	50%	30%	10%	50%	30%	10%	50%	30%	10%	0
ρfc	20%			20%			20%			20%			20%			0
RCR	RCR:Room Cavity Ratio						Coefficients of Utilization(CU)									
0.0	1.18	1.18	1.18	1.15	1.15	1.15	1.10	1.10	1.10	1.04	1.04	1.04	.99	.99	.99	.97
1.0	1.11	1.08	1.06	1.08	1.06	1.04	1.04	1.02	1.01	.98	.98	.97	.96	.95	.94	.92
2.0	1.04	.97	.97	1.02	.98	.96	.98	.95	.93	.95	.93	.91	.92	.90	.88	.87
3.0	.97	.93	.89	.96	.92	.88	.93	.89	.87	.90	.87	.85	.88	.85	.83	.82
4.0	.92	.87	.83	.91	.86	.82	.88	.84	.81	.86	.83	.80	.84	.81	.79	.77
5.0	.87	.82	.78	.86	.81	.77	.84	.79	.76	.82	.78	.75	.80	.77	.74	.73
6.0	.82	.77	.73	.81	.76	.73	.80	.75	.72	.78	.74	.71	.77	.73	.71	.69
7.0	.78	.73	.69	.77	.72	.69	.76	.71	.68	.75	.71	.68	.73	.70	.67	.66
8.0	.74	.69	.65	.74	.69	.65	.72	.68	.65	.71	.67	.64	.70	.66	.64	.63
9.0	.71	.66	.62	.70	.65	.62	.69	.65	.61	.68	.64	.61	.67	.64	.61	.60
10.0	.68	.63	.59	.67	.62	.59	.66	.62	.59	.65	.61	.58	.65	.61	.58	.57



C Range: 0 - 360DEG
 C Interval: 30.0DEG
 Test Speed: HIGH
 Temperature:25.3DEG
 Operators:DAMIN
 Test Date:2022-05-04

γ Range: 0 - 180DEG
 γ Interval: 1.0DEG
 Test System:EVERFINE GO-2000A_V1 SYSTEM V2.00.443
 Humidity:65.0%
 Test Distance:8.000m [K=0.7063]
 Remarks:

WEC AND CCEC

Test:U:221.70V I:0.0590A P:10.800W PF:0.8280 Freq:50.00Hz		
Lamp Flux:1079.31x1 lm		
Name: NS47-φ71mm-10W	Type: LED	
MFR.: Lumega Group	DIM.: D71*100mm	
	SUR.: D65mm	

ρ _{cc}	80%			70%			50%			30%			10%			0
ρ _w	50%	30%	10%	50%	30%	10%	50%	30%	10%	50%	30%	10%	50%	30%	10%	0
ρ _{fc}	20%			20%			20%			20%			20%			0
RCR	RCR:Room Cavity Ratio						Wall Exitance Coefficients(WEC)									
0.0																
1.0	.167	.095	.030	.160	.091	.029	.146	.084	.027	.133	.077	.025	.121	.070	.023	
2.0	.158	.087	.027	.152	.084	.026	.140	.078	.024	.129	.072	.023	.119	.067	.021	
3.0	.150	.080	.024	.144	.077	.023	.134	.073	.022	.125	.068	.021	.116	.064	.020	
4.0	.142	.074	.022	.137	.072	.021	.128	.068	.020	.120	.064	.019	.112	.061	.019	
5.0	.135	.069	.020	.131	.067	.020	.123	.064	.019	.116	.061	.018	.109	.058	.017	
6.0	.128	.064	.018	.125	.063	.018	.118	.060	.018	.111	.058	.017	.105	.055	.016	
7.0	.122	.061	.017	.119	.059	.017	.113	.057	.016	.107	.055	.016	.102	.053	.016	
8.0	.117	.057	.016	.114	.056	.016	.109	.054	.015	.103	.052	.015	.099	.051	.015	
9.0	.112	.054	.015	.109	.053	.015	.104	.052	.015	.100	.050	.014	.095	.048	.014	
10.0	.107	.052	.014	.105	.051	.014	.101	.049	.014	.096	.048	.014	.092	.046	.013	

ρ _{cc}	80%			70%			50%			30%			10%			0
ρ _w	50%	30%	10%	50%	30%	10%	50%	30%	10%	50%	30%	10%	50%	30%	10%	0
ρ _{fc}	20%			20%			20%			20%			20%			0
RCR	RCR:Room Cavity Ratio						Ceiling Cavity Exitance Coefficients(CCEC)									
0.0	.212	.212	.212	.181	.181	.181	.123	.123	.123	.071	.071	.071	.023	.023	.023	
1.0	.192	.179	.167	.164	.153	.144	.112	.106	.099	.065	.061	.058	.021	.020	.019	
2.0	.176	.154	.136	.151	.133	.117	.103	.092	.082	.060	.053	.048	.019	.017	.016	
3.0	.163	.135	.113	.140	.117	.098	.096	.081	.069	.055	.047	.040	.018	.015	.013	
4.0	.152	.120	.096	.131	.104	.083	.090	.072	.059	.052	.042	.035	.017	.014	.011	
5.0	.143	.109	.083	.123	.094	.072	.085	.066	.051	.049	.039	.030	.016	.013	.010	
6.0	.135	.099	.073	.116	.086	.064	.080	.060	.045	.047	.035	.027	.015	.012	.009	
7.0	.128	.091	.066	.110	.079	.057	.076	.056	.040	.044	.033	.024	.014	.011	.008	
8.0	.123	.085	.059	.106	.074	.052	.073	.052	.037	.042	.031	.022	.014	.010	.007	
9.0	.117	.080	.054	.101	.069	.048	.070	.049	.034	.041	.029	.020	.013	.009	.007	
10.0	.113	.075	.050	.097	.065	.044	.067	.046	.031	.039	.027	.019	.013	.009	.006	

C Range: 0 - 360DEG
C Interval: 30.0DEG
Test Speed: HIGH
Temperature:25.3DEG
Operators:DAMIN
Test Date:2022-05-04

γ Range: 0 - 180DEG
γ Interval: 1.0DEG
Test System:EVERFINE GO-2000A_V1 SYSTEM V2.00.443
Humidity:65.0%
Test Distance:8.000m [K=0.7063]
Remarks:

UGR(Unified Glare Rating) Table

Test:U:221.70V I:0.0590A P:10.800W PF:0.8280 Freq:50.00Hz		
Lamp Flux:1079.31x1 lm		
Name: NS47-φ71mm-10W	Type: LED	
MFR.: Lumega Group	DIM.: D71*100mm	
	SUR.: D65mm	

ceiling/cavity	0.7	0.7	0.5	0.5	0.3	0.7	0.7	0.5	0.5	0.3
walls	0.5	0.3	0.5	0.3	0.3	0.5	0.3	0.5	0.3	0.3
working plane	0.2	0.2	0.2	0.2	0.2	0.2	0.2	0.2	0.2	0.2
Room dimensions	Viewed crosswise					Viewed endwise				
x = 2H y = 2H	13.7	14.6	14.0	14.8	15.0	13.7	14.5	14.0	14.8	15.0
3H	13.6	14.3	13.9	14.6	14.8	13.5	14.3	13.8	14.5	14.8
4H	13.5	14.2	13.8	14.5	14.7	13.4	14.2	13.8	14.4	14.7
6H	13.4	14.1	13.7	14.4	14.7	13.4	14.0	13.7	14.3	14.6
8H	13.3	14.0	13.7	14.3	14.6	13.3	14.0	13.7	14.3	14.6
12H	13.3	13.9	13.7	14.2	14.6	13.3	13.9	13.6	14.2	14.5
4H 2H	13.5	14.2	13.8	14.5	14.7	13.4	14.2	13.8	14.4	14.7
3H	13.3	13.9	13.7	14.2	14.6	13.3	13.9	13.6	14.2	14.5
4H	13.2	13.8	13.6	14.1	14.5	13.2	13.7	13.6	14.1	14.4
6H	13.1	13.6	13.5	14.0	14.4	13.1	13.6	13.5	13.9	14.3
8H	13.0	13.5	13.5	13.9	14.3	13.0	13.5	13.4	13.9	14.3
12H	13.0	13.4	13.4	13.8	14.3	13.0	13.4	13.4	13.8	14.3
8H 4H	13.0	13.5	13.5	13.9	14.3	13.0	13.5	13.4	13.9	14.3
6H	12.9	13.3	13.4	13.8	14.2	12.9	13.3	13.4	13.7	14.2
8H	12.9	13.2	13.4	13.7	14.2	12.8	13.2	13.3	13.6	14.1
12H	12.8	13.1	13.3	13.6	14.1	12.8	13.1	13.3	13.6	14.1
12H 4H	13.0	13.4	13.4	13.8	14.3	12.9	13.4	13.4	13.8	14.2
6H	12.9	13.2	13.4	13.7	14.2	12.8	13.2	13.3	13.6	14.1
8H	12.8	13.1	13.3	13.6	14.1	12.8	13.1	13.3	13.6	14.1
Variations with the observer position at spacings(CIE Pub.117):										
S = 1.0H	+ 3.1 / -13.4					+ 3.1 / -12.3				
1.5H	+ 4.8 / -10.2					+ 4.7 / - 9.8				
2.0H	+ 7.2 / -12.8					+ 7.0 / -12.2				

CIE Pub.117, 1079 lm Total Lamp Luminous Flux Corrected (8log(F/F0) = 0.3)
 Area: 0.0033 m2

C Range: 0 - 360DEG
C Interval: 30.0DEG
Test Speed: HIGH
Temperature:25.3DEG
Operators:DAMIN
Test Date:2022-05-04

γ Range: 0 - 180DEG
γ Interval: 1.0DEG
Test System:EVERFINE GO-2000A_V1 SYSTEM V2.00.443
Humidity:65.0%
Test Distance:8.000m [K=0.7063]
Remarks:

UTILIZATION FACTORS TABLE

Test:U:221.70V I:0.0590A P:10.800W PF:0.8280 Freq:50.00Hz Lamp Flux:1079.31x1 lm		
Name: NS47-φ71mm-10W	Type: LED	
MFR.: Lumega Group	DIM.: D71*100mm	
	SUR.: D65mm	

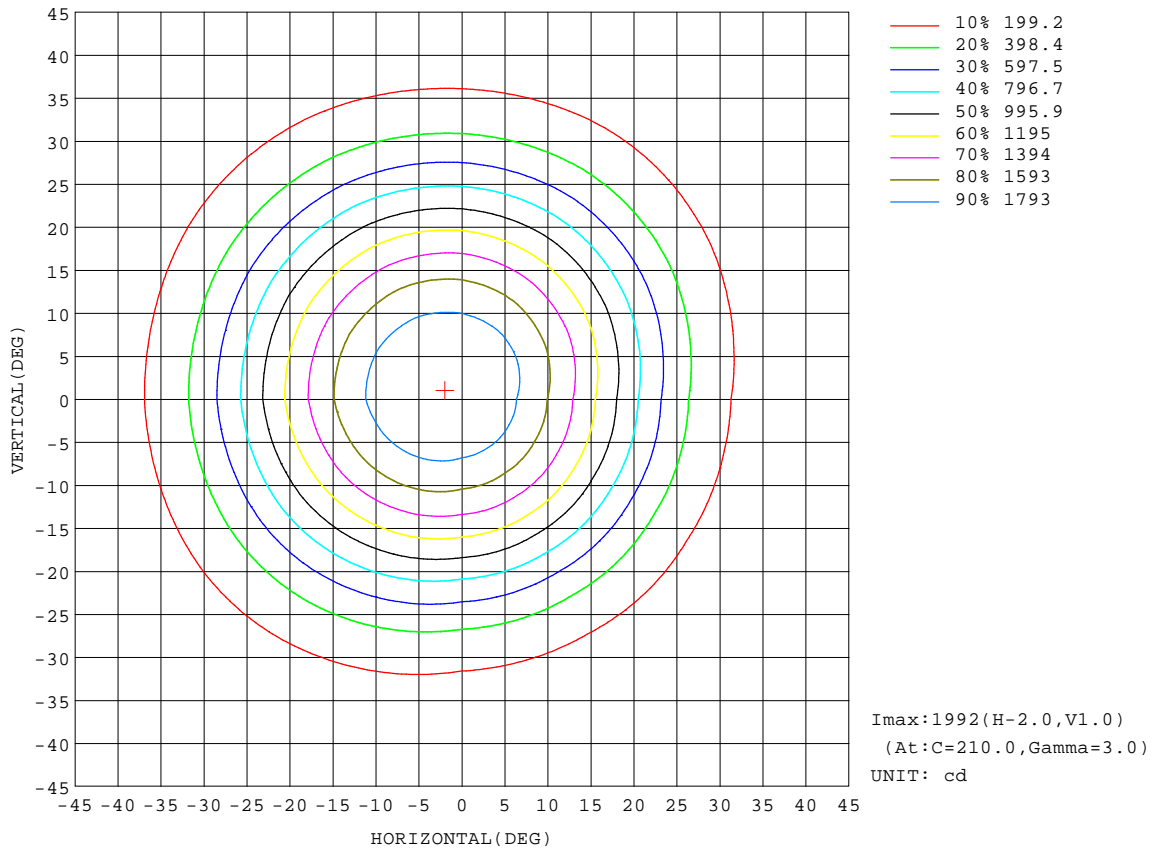
REFLECTANCE										
Ceiling	0.8	0.8	0.8	0.7	0.7	0.7	0.5	0.5	0.5	0
Walls	0.7	0.5	0.3	0.7	0.5	0.3	0.7	0.5	0.3	0
Working plane	0.2	0.2	0.2	0.2	0.2	0.2	0.2	0.2	0.2	0
ROOM INDEX	UTILIZATION FACTORS(PERCENT) $k(RI) \times RCR = 5$									
k = 0.60	86	80	76	85	79	76	85	79	76	72
0.80	94	88	84	93	87	84	91	86	83	79
1.00	98	92	89	97	92	88	95	91	88	83
1.25	102	97	93	101	96	93	99	95	92	87
1.50	105	100	97	103	99	96	101	97	95	90
2.00	108	103	100	106	102	99	103	100	97	92
2.50	109	105	102	107	104	101	104	101	99	92
3.00	111	107	105	109	106	103	105	103	101	94
4.00	113	110	108	111	108	106	107	105	103	95
5.00	114	112	110	112	110	108	107	106	105	96
ROOM INDEX	UF(total)									Direct
According to DIN EN 13032-2 2004			Suspended					SHRNOM = 1.25		

C Range: 0 - 360DEG
C Interval: 30.0DEG
Test Speed: HIGH
Temperature:25.3DEG
Operators:DAMIN
Test Date:2022-05-04

γ Range: 0 - 180DEG
γ Interval: 1.0DEG
Test System:EVERFINE GO-2000A_V1 SYSTEM V2.00.443
Humidity:65.0%
Test Distance:8.000m [K=0.7063]
Remarks:

ISOCANDELA DIAGRAM

Test:U:221.70V I:0.0590A P:10.800W PF:0.8280 Freq:50.00Hz		
Lamp Flux:1079.31x1 lm		
Name: NS47-φ71mm-10W	Type: LED	
MFR.: Lumega Group	DIM.: D71*100mm	
	SUR.: D65mm	



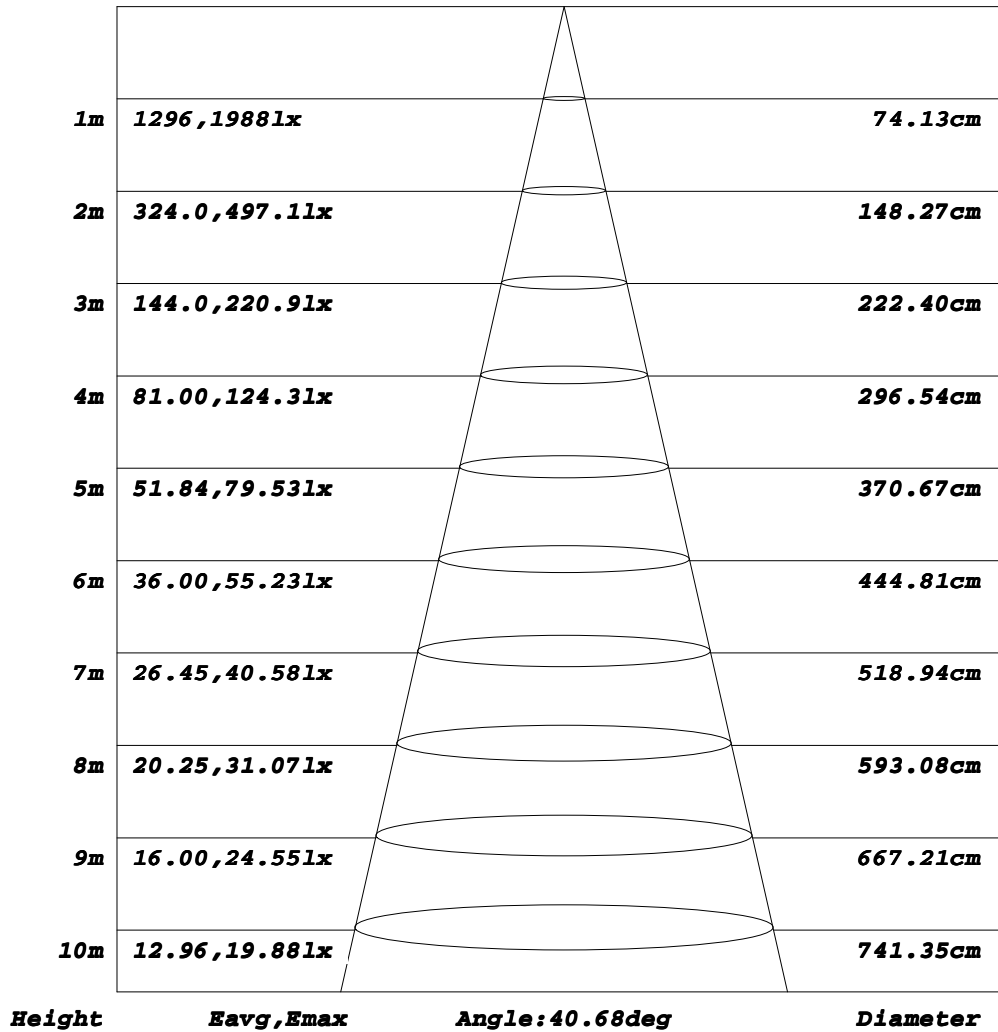
C Range: 0 - 360DEG
C Interval: 30.0DEG
Test Speed: HIGH
Temperature: 25.3DEG
Operators: DAMIN
Test Date: 2022-05-04

γ Range: 0 - 180DEG
γ Interval: 1.0DEG
Test System: EVERFINE GO-2000A_V1 SYSTEM V2.00.443
Humidity: 65.0%
Test Distance: 8.000m [K=0.7063]
Remarks:

AAI Figure

Test:U:221.70V I:0.0590A P:10.800W PF:0.8280 Freq:50.00Hz		
Lamp Flux:1079.31x1 lm		
Name: NS47-φ71mm-10W	Type: LED	
MFR.: Lumega Group	DIM.: D71*100mm	
	SUR.: D65mm	

Flux out:600.0 lm



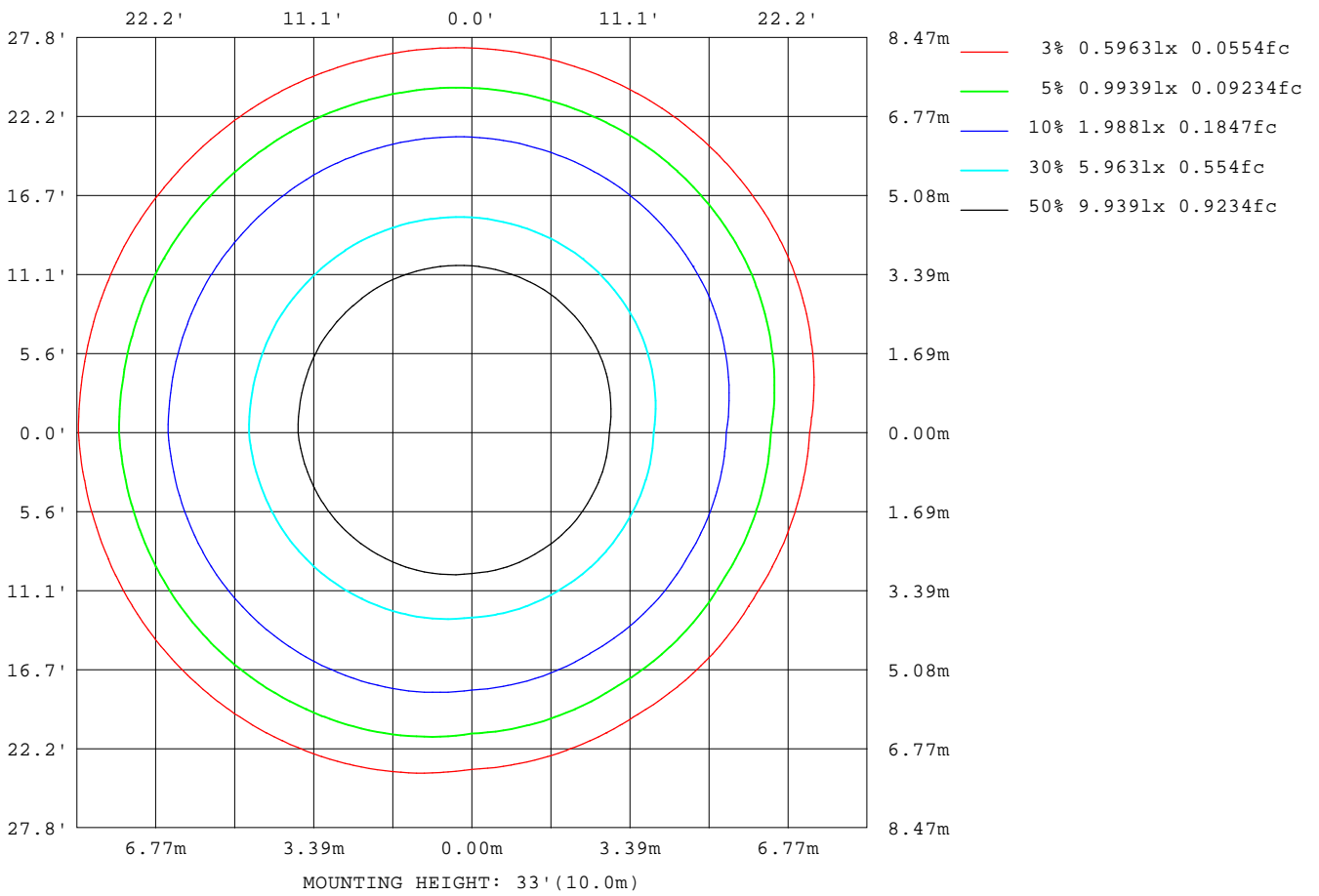
Note: The Curves indicate the illuminated area and the average illumination when the luminaire is at different distance.

C Range: 0 - 360DEG
C Interval: 30.0DEG
Test Speed: HIGH
Temperature: 25.3DEG
Operators: DAMIN
Test Date: 2022-05-04

γ Range: 0 - 180DEG
γ Interval: 1.0DEG
Test System: EVERFINE GO-2000A_V1 SYSTEM V2.00.443
Humidity: 65.0%
Test Distance: 8.000m [K=0.7063]
Remarks:

ISOLUX DIAGRAM

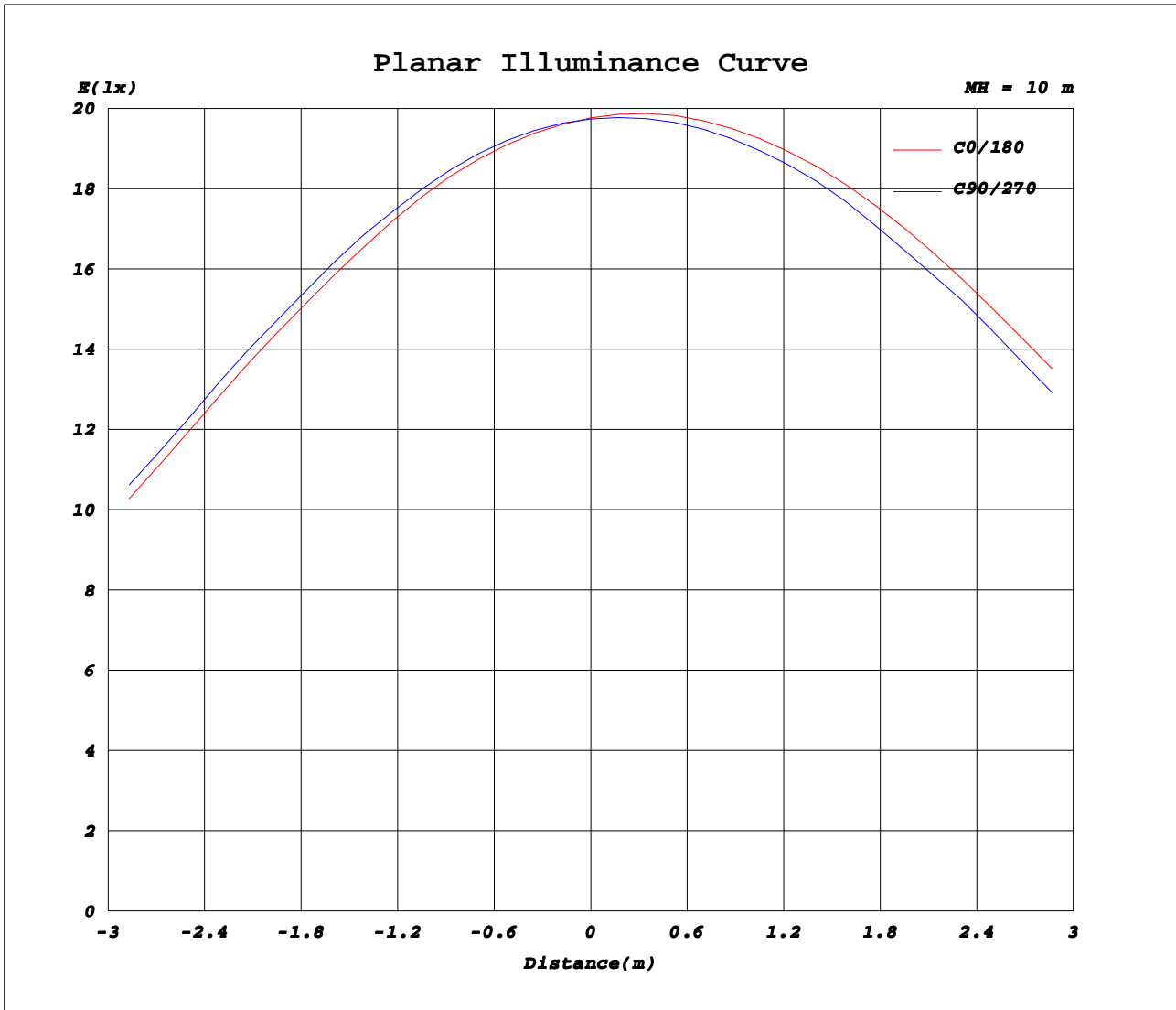
Test:U:221.70V I:0.0590A P:10.800W PF:0.8280 Freq:50.00Hz		
Lamp Flux:1079.31lx1 lm		
Name: NS47-φ71mm-10W	Type: LED	
MFR.: Lumega Group	DIM.: D71*100mm	
	SUR.: D65mm	



C Range: 0 - 360DEG
C Interval: 30.0DEG
Test Speed: HIGH
Temperature: 25.3DEG
Operators: DAMIN
Test Date: 2022-05-04

γ Range: 0 - 180DEG
γ Interval: 1.0DEG
Test System: EVERFINE GO-2000A_V1 SYSTEM V2.00.443
Humidity: 65.0%
Test Distance: 8.000m [K=0.7063]
Remarks:

Planar Illuminance Curve



C Range: 0 - 360DEG
C Interval: 30.0DEG
Test Speed: HIGH
Temperature: 25.3DEG
Operators: DAMIN
Test Date: 2022-05-04

γ Range: 0 - 180DEG
γ Interval: 1.0DEG
Test System: EVERFINE GO-2000A_V1 SYSTEM V2.00.443
Humidity: 65.0%
Test Distance: 8.000m [K=0.7063]
Remarks:

LUMINOUS DISTRIBUTION INTENSITY DATA

Test:U:221.70V I:0.0590A P:10.800W PF:0.8280 Freq:50.00Hz		
Lamp Flux:1079.31x1 lm		
Name: NS47-φ71mm-10W	Type: LED	
MFR.: Lumega Group	DIM.: D71*100mm	
	SUR.: D65mm	

Table--1

UNIT: cd

C (DEG) \ γ (DEG)	0	30	60	90	120	150	180	210	240	270	300	330							
0	1977	1975	1974	1974	1975	1976	1977	1976	1975	1974	1974	1975							
5	1852	1848	1853	1869	1905	1942	1973	1976	1967	1947	1923	1891							
10	1589	1579	1590	1622	1697	1777	1843	1850	1831	1791	1740	1673							
15	1235	1216	1229	1272	1378	1491	1586	1598	1574	1520	1449	1354							
20	835	807	817	866	991	1126	1240	1255	1228	1165	1083	973							
25	479	449	456	500	618	745	852	864	836	776	702	602							
30	238	216	220	250	333	422	498	507	487	445	393	324							
35	123	108	108	123	168	217	258	264	254	232	205	169							
40	78.0	67.5	65.1	70.6	91.5	115	135	137	131	121	110	95.6							
45	40.0	34.5	34.0	38.4	52.3	67.8	81.5	85.4	84.5	79.2	70.2	57.1							
50	16.2	13.8	14.1	17.0	24.9	33.8	41.8	45.5	46.4	44.2	38.3	28.9							
55	5.84	4.89	5.04	6.30	9.50	13.2	16.6	18.9	20.0	19.6	16.9	12.3							
60	1.35	1.01	1.17	1.83	3.41	5.19	6.84	7.85	8.29	8.00	6.65	4.43							
65	0.77	0.67	0.72	0.94	1.46	2.03	2.54	2.75	2.78	2.61	2.21	1.59							
70	0.50	0.42	0.45	0.59	0.94	1.31	1.65	1.77	1.76	1.64	1.38	1.00							
75	0.33	0.24	0.25	0.38	0.73	1.10	1.44	1.57	1.58	1.47	1.22	0.84							
80	0.25	0.14	0.14	0.27	0.63	1.03	1.39	1.53	1.54	1.43	1.17	0.78							
85	0.24	0.10	0.10	0.23	0.62	1.05	1.44	1.59	1.60	1.47	1.20	0.79							
90	0.34	0.19	0.18	0.31	0.70	1.14	1.53	1.67	1.68	1.55	1.28	0.88							
95	0.55	0.40	0.39	0.51	0.88	1.30	1.68	1.81	1.82	1.69	1.44	1.06							
100	0.83	0.68	0.67	0.79	1.15	1.57	1.94	2.07	2.07	1.95	1.70	1.33							
105	1.21	1.06	1.04	1.15	1.50	1.90	2.26	2.38	2.38	2.26	2.03	1.68							
110	1.70	1.57	1.55	1.65	1.97	2.32	2.64	2.75	2.75	2.65	2.44	2.12							
115	2.35	2.23	2.21	2.29	2.54	2.84	3.11	3.20	3.20	3.11	2.94	2.69							
120	3.18	3.07	3.04	3.09	3.27	3.49	3.69	3.76	3.76	3.71	3.59	3.42							
125	4.21	4.14	4.11	4.13	4.22	4.32	4.42	4.46	4.48	4.46	4.41	4.32							
130	5.43	5.38	5.35	5.33	5.33	5.33	5.35	5.35	5.36	5.37	5.39	5.41							
135	6.75	6.74	6.71	6.66	6.56	6.46	6.39	6.38	6.41	6.46	6.53	6.63							
140	8.14	8.18	8.16	8.10	7.95	7.78	7.64	7.60	7.62	7.69	7.79	7.95							
145	9.51	9.60	9.62	9.56	9.35	9.12	8.92	8.88	8.90	8.99	9.11	9.28							
150	10.6	10.8	10.9	10.8	10.7	10.5	10.2	10.2	10.2	10.2	10.3	10.4							
155	11.2	11.5	11.6	11.7	11.6	11.4	11.3	11.3	11.3	11.3	11.3	11.3							
160	11.2	11.5	11.6	11.8	11.8	11.8	11.8	11.8	11.7	11.7	11.6	11.4							
165	10.7	10.9	11.2	11.4	11.5	11.6	11.7	11.7	11.7	11.6	11.4	11.1							
170	10.1	10.4	10.7	10.9	11.1	11.2	11.3	11.3	11.3	11.1	10.9	10.5							
175	10.1	10.2	10.4	10.5	10.7	10.7	10.8	10.8	10.7	10.6	10.5	10.3							
180	10.4	10.5	10.5	10.5	10.5	10.5	10.4	10.5	10.5	10.5	10.5	10.5							

C Range: 0 - 360DEG
C Interval: 30.0DEG
Test Speed: HIGH
Temperature: 25.3DEG
Operators: DAMIN
Test Date: 2022-05-04

γ Range: 0 - 180DEG
γ Interval: 1.0DEG
Test System: EVERFINE GO-2000A_V1 SYSTEM V2.00.443
Humidity: 65.0%
Test Distance: 8.000m [K=0.7063]
Remarks: