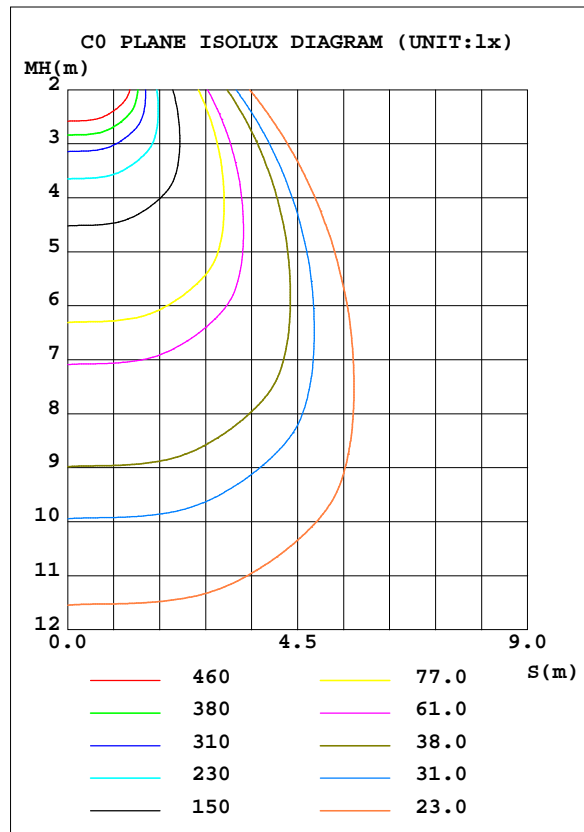
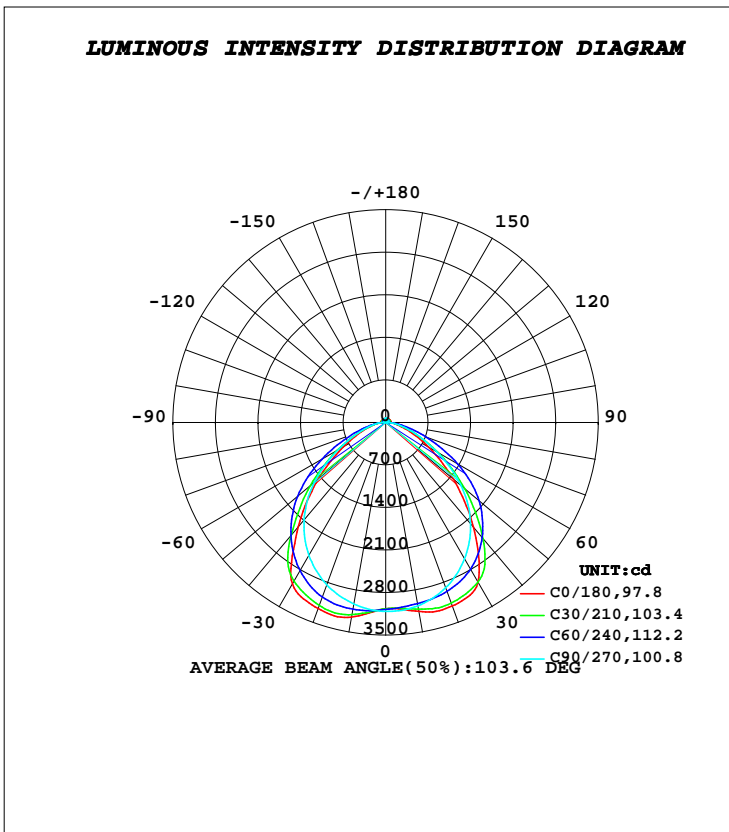


**LUMINAIRE PHOTOMETRIC TEST REPORT**

Test:U:220.60V I:0.2460A P:53.000W PF:0.9740 Freq:50.00Hz		
Lamp Flux:8610.4lx1 lm		
Name: NS51-50W	Type: LED	
MFR.: Lumega Group	DIM.: 1200*65*55mm	
	SUR.: 1180*65mm	

DATA OF LAMP		PHOTOMETRIC DATA Eff: 162.46 lm/W			
MODEL		I <sub>max</sub> (cd)	3293	S/MH(C0/180)	1.33
NOMINAL POWER(W)	50	LOR(%)	100.0	S/MH(C90/270)	1.24
RATED VOLTAGE(V)	220	TOTAL FLUX(lm)	8610.4	η UP, DN(C0-180)	2.0,47.5
NOMINAL FLUX(lm)	8610.41	CIE CLASS	DIRECT	η UP, DN(C180-360)	2.1,48.4
LAMPS INSIDE	1	η up(%)	4.1	CIBSE SHR NOM	1.50
TEST VOLTAGE(V)	221.6	η down(%)	95.9	CIBSE SHR MAX	1.50



**C Range: 0 - 360DEG**  
**C Interval: 30.0DEG**  
**Test Speed: HIGH**  
**Temperature:25.3DEG**  
**Operators:DAMIN**  
**Test Date:2022-06-10**

**γ Range: 0 - 180DEG**  
**γ Interval: 1.0DEG**  
**Test System:EVERFINE GO-2000A\_V1 SYSTEM V2.00.443**  
**Humidity:65.0%**  
**Test Distance:8.000m [K=0.7063]**  
**Remarks:**

**ZONAL FLUX DIAGRAM**

**ZONAL FLUX DIAGRAM:**

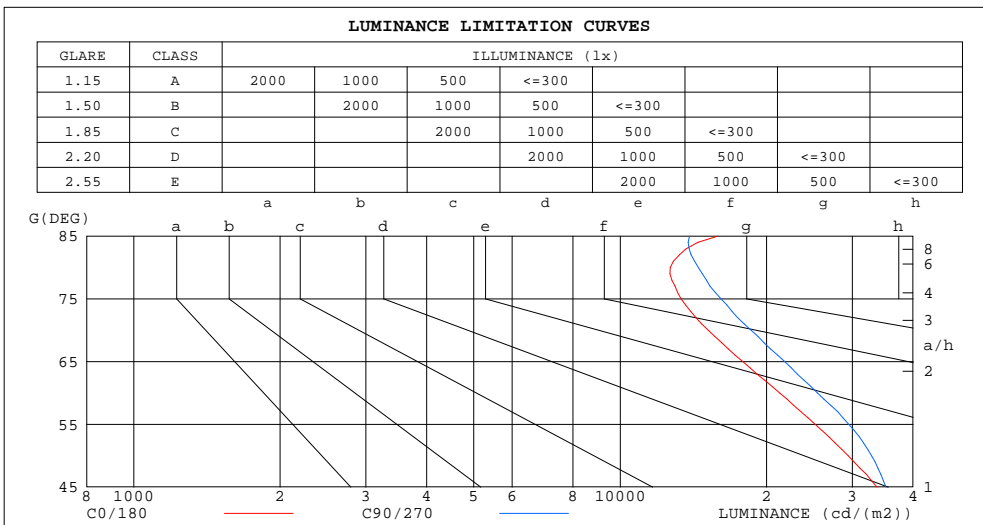
$\gamma$	C0	C45	C90	C135	C180	C225	C270	C315	$\gamma$	$\Phi$ zone	$\Phi$ total	%lum, lamp
10	3158	3072	3064	3236	3250	3165	3032	3037	0- 10	297.3	297.3	3.45,3.45
20	3213	3059	2893	3161	3258	3130	2841	3024	10- 20	882.8	1180	13.7,13.7
30	3037	2912	2595	2912	3074	2916	2527	2897	20- 30	1382	2562	29.8,29.8
40	2245	2483	2175	2320	2237	2424	2090	2552	30- 40	1653	4215	49,49
50	1457	1855	1627	1649	1450	1758	1536	1940	40- 50	1568	5784	67.2,67.2
60	818.8	1185	979.9	974.1	808.0	1070	908.0	1267	50- 60	1222	7006	81.4,81.4
70	399.6	598.9	489.4	458.8	397.2	519.4	453.0	660.8	60- 70	754.1	7760	90.1,90.1
80	169.5	235.3	193.7	166.7	174.0	200.3	180.2	273.8	70- 80	364.1	8124	94.4,94.4
90	69.87	57.36	21.18	52.63	72.45	56.02	27.85	79.87	80- 90	129.4	8254	95.9,95.9
100	71.31	52.97	25.10	53.91	75.35	56.30	29.27	57.09	90-100	57.44	8311	96.5,96.5
110	72.32	56.71	29.18	55.35	74.61	57.79	32.81	60.93	100-110	58.42	8370	97.2,97.2
120	66.97	56.03	35.07	56.75	68.83	58.16	38.95	58.39	110-120	54.88	8424	97.8,97.8
130	67.40	55.32	41.64	58.31	69.12	59.83	44.70	57.62	120-130	50.62	8475	98.4,98.4
140	67.84	55.75	48.11	59.20	68.83	61.16	50.70	57.78	130-140	44.75	8520	98.9,98.9
150	66.91	57.55	55.05	60.24	67.17	62.14	56.93	59.74	140-150	37.35	8557	99.4,99.4
160	65.24	61.26	61.73	62.58	65.31	63.67	62.88	62.58	150-160	28.50	8586	99.7,99.7
170	66.97	66.17	66.93	66.44	66.37	66.43	67.47	65.93	160-170	18.27	8604	99.9,99.9
180	68.38	68.66	69.84	68.71	68.39	68.69	69.82	68.72	170-180	6.444	8610	100,100
DEG	LUMINOUS INTENSITY:cd									UNIT:lm		

**C Range: 0 - 360DEG**  
**C Interval: 30.0DEG**  
**Test Speed: HIGH**  
**Temperature:25.3DEG**  
**Operators:DAMIN**  
**Test Date:2022-06-10**

**$\gamma$  Range: 0 - 180DEG**  
 **$\gamma$  Interval: 1.0DEG**  
**Test System:EVERFINE GO-2000A\_V1 SYSTEM V2.00.443**  
**Humidity:65.0%**  
**Test Distance:8.000m [K=0.7063]**  
**Remarks:**

**LUMINANCE LIMITATION CURVES**

Test:U:220.60V I:0.2460A P:53.000W PF:0.9740 Freq:50.00Hz		
Lamp Flux:8610.41x1 lm		
Name: NS51-50W	Type: LED	
MFR.: Lumega Group	DIM.: 1200*65*55mm	
	SUR.: 1180*65mm	



LUMINANCE cd/(m2)		
G(DEG)	C0/180	C90/270
85	15860	13878
80	12674	14483
75	13339	16126
70	15173	18583
65	17872	21791
60	21269	25452
55	25182	29533
50	29431	32872
45	33721	35209

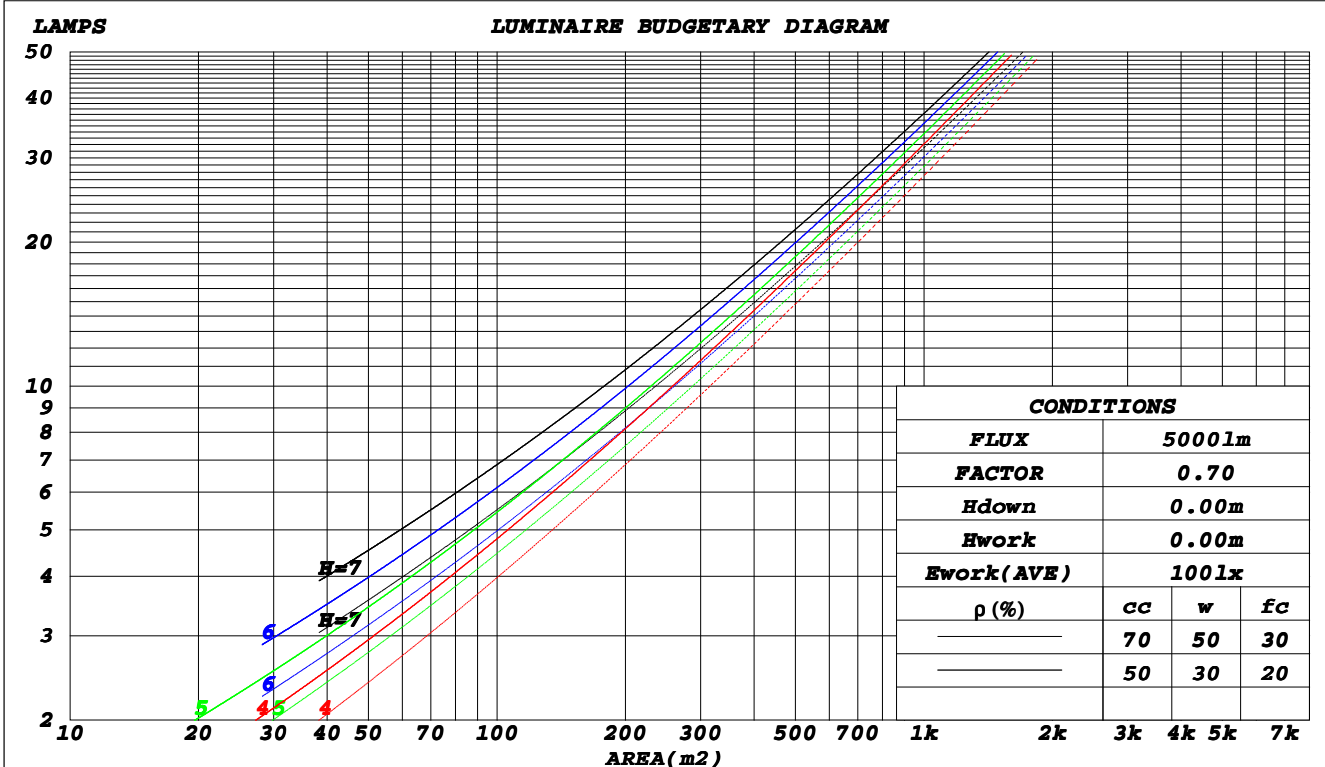
**C Range: 0 - 360DEG**  
**C Interval: 30.0DEG**  
**Test Speed: HIGH**  
**Temperature: 25.3DEG**  
**Operators: DAMIN**  
**Test Date: 2022-06-10**

**γ Range: 0 - 180DEG**  
**γ Interval: 1.0DEG**  
**Test System: EVERFINE GO-2000A\_V1 SYSTEM V2.00.443**  
**Humidity: 65.0%**  
**Test Distance: 8.000m [K=0.7063]**  
**Remarks:**

**CU AND LUMINAIRE BUDGETARY ESTIMATE DIAGRAM**

Test:U:220.60V I:0.2460A P:53.000W PF:0.9740 Freq:50.00Hz		
Lamp Flux:8610.41x1 lm		
Name: NS51-50W	Type: LED	
MFR.: Lumega Group	DIM.: 1200*65*55mm	
	SUR.: 1180*65mm	

$\rho_{cc}$	80%			70%			50%			30%			10%			0
$\rho_w$	50%	30%	10%	50%	30%	10%	50%	30%	10%	50%	30%	10%	50%	30%	10%	0
$\rho_{fc}$	20%			20%			20%			20%			20%			0
<b>RCR</b>	<b>RCR:Room Cavity Ratio</b>						<b>Coefficients of Utilization(CU)</b>									
0.0	1.18	1.18	1.18	1.15	1.15	1.15	1.09	1.09	1.09	1.03	1.03	1.03	.98	.98	.98	.96
1.0	1.04	1.00	.97	1.02	.98	.95	.97	.94	.91	.92	.90	.88	.88	.86	.84	.82
2.0	.92	.86	.80	.90	.84	.79	.86	.81	.77	.82	.78	.74	.78	.75	.72	.70
3.0	.81	.74	.68	.80	.73	.67	.76	.70	.65	.73	.68	.64	.70	.66	.62	.60
4.0	.73	.64	.58	.71	.63	.57	.68	.62	.56	.65	.60	.55	.63	.58	.54	.52
5.0	.65	.57	.50	.64	.56	.50	.61	.54	.49	.59	.53	.48	.57	.52	.47	.45
6.0	.59	.50	.44	.58	.50	.44	.56	.49	.43	.54	.47	.43	.52	.46	.42	.40
7.0	.54	.45	.39	.53	.45	.39	.51	.44	.38	.49	.43	.38	.47	.42	.37	.35
8.0	.49	.41	.35	.48	.40	.35	.46	.39	.34	.45	.39	.34	.43	.38	.34	.32
9.0	.45	.37	.32	.44	.37	.31	.43	.36	.31	.41	.35	.31	.40	.34	.30	.29
10.0	.41	.34	.29	.41	.33	.29	.40	.33	.28	.38	.32	.28	.37	.32	.28	.26



C Range: 0 - 360DEG  
 C Interval: 30.0DEG  
 Test Speed: HIGH  
 Temperature: 25.3DEG  
 Operators: DAMIN  
 Test Date: 2022-06-10

$\gamma$  Range: 0 - 180DEG  
 $\gamma$  Interval: 1.0DEG  
 Test System: EVERFINE GO-2000A\_V1 SYSTEM V2.00.443  
 Humidity: 65.0%  
 Test Distance: 8.000m [K=0.7063]  
 Remarks:

**WEC AND CCEC**

Test:U:220.60V I:0.2460A P:53.000W PF:0.9740 Freq:50.00Hz		
Lamp Flux:8610.4lx1 lm		
Name: NS51-50W	Type: LED	
MFR.: Lumega Group	DIM.: 1200*65*55mm	
	SUR.: 1180*65mm	

$\rho_{cc}$	80%			70%			50%			30%			10%			0
$\rho_w$	50%	30%	10%	50%	30%	10%	50%	30%	10%	50%	30%	10%	50%	30%	10%	0
$\rho_{fc}$	20%			20%			20%			20%			20%			0
<b>RCR</b>	<b>RCR:Room Cavity Ratio</b>						<b>Wall Exitance Coefficients(WEC)</b>									
0.0																
1.0	.282	.160	.051	.274	.156	.050	.258	.148	.047	.244	.141	.045	.231	.134	.043	
2.0	.267	.147	.045	.260	.143	.044	.246	.137	.043	.234	.131	.041	.222	.126	.040	
3.0	.250	.133	.040	.243	.130	.039	.231	.125	.038	.220	.121	.037	.210	.116	.036	
4.0	.233	.121	.036	.227	.119	.035	.216	.115	.034	.206	.111	.033	.197	.107	.033	
5.0	.217	.110	.032	.212	.109	.032	.202	.105	.031	.193	.102	.030	.185	.099	.030	
6.0	.202	.101	.029	.198	.100	.029	.189	.097	.028	.181	.094	.028	.173	.091	.027	
7.0	.189	.094	.027	.185	.092	.026	.177	.090	.026	.170	.087	.025	.163	.085	.025	
8.0	.178	.087	.024	.174	.086	.024	.167	.083	.024	.160	.081	.023	.154	.079	.023	
9.0	.167	.081	.023	.164	.080	.022	.157	.078	.022	.151	.076	.022	.146	.074	.021	
10.0	.158	.076	.021	.155	.075	.021	.149	.073	.021	.143	.071	.020	.138	.069	.020	

$\rho_{cc}$	80%			70%			50%			30%			10%			0
$\rho_w$	50%	30%	10%	50%	30%	10%	50%	30%	10%	50%	30%	10%	50%	30%	10%	0
$\rho_{fc}$	20%			20%			20%			20%			20%			0
<b>RCR</b>	<b>RCR:Room Cavity Ratio</b>						<b>Ceiling Cavity Exitance Coefficients(CCEC)</b>									
0.0	.222	.222	.222	.190	.190	.190	.130	.130	.130	.074	.074	.074	.024	.024	.024	
1.0	.210	.188	.168	.180	.162	.145	.123	.111	.100	.071	.064	.058	.023	.021	.019	
2.0	.201	.164	.133	.172	.141	.115	.118	.098	.080	.068	.057	.047	.022	.018	.015	
3.0	.193	.146	.109	.165	.126	.095	.113	.088	.067	.066	.051	.039	.021	.017	.013	
4.0	.185	.133	.093	.159	.115	.081	.109	.080	.057	.063	.047	.034	.020	.015	.011	
5.0	.178	.123	.082	.153	.106	.071	.105	.074	.050	.061	.043	.030	.020	.014	.010	
6.0	.171	.114	.073	.147	.099	.064	.101	.069	.045	.059	.041	.027	.019	.013	.009	
7.0	.165	.107	.067	.142	.093	.058	.098	.065	.041	.057	.038	.025	.018	.013	.008	
8.0	.158	.101	.062	.136	.088	.054	.094	.062	.039	.055	.036	.023	.018	.012	.008	
9.0	.153	.097	.059	.132	.084	.051	.091	.059	.036	.053	.035	.022	.017	.011	.007	
10.0	.147	.092	.056	.127	.080	.049	.088	.056	.035	.051	.033	.021	.017	.011	.007	

**C Range: 0 - 360DEG**  
**C Interval: 30.0DEG**  
**Test Speed: HIGH**  
**Temperature:25.3DEG**  
**Operators:DAMIN**  
**Test Date:2022-06-10**

**$\gamma$  Range: 0 - 180DEG**  
 **$\gamma$  Interval: 1.0DEG**  
**Test System:EVERFINE GO-2000A\_V1 SYSTEM V2.00.443**  
**Humidity:65.0%**  
**Test Distance:8.000m [K=0.7063]**  
**Remarks:**

**UGR(Unified Glare Rating) Table**

Test:U:220.60V I:0.2460A P:53.000W PF:0.9740 Freq:50.00Hz		
Lamp Flux:8610.4lx1 lm		
Name: NS51-50W	Type: LED	
MFR.: Lumega Group	DIM.: 1200*65*55mm	
	SUR.: 1180*65mm	

ceiling/cavity	0.7	0.7	0.5	0.5	0.3	0.7	0.7	0.5	0.5	0.3
walls	0.5	0.3	0.5	0.3	0.3	0.5	0.3	0.5	0.3	0.3
working plane	0.2	0.2	0.2	0.2	0.2	0.2	0.2	0.2	0.2	0.2
Room dimensions	Viewed crosswise					Viewed endwise				
<b>x = 2H y = 2H</b>	<b>23.8</b>	<b>25.2</b>	<b>24.1</b>	<b>25.5</b>	<b>25.8</b>	<b>24.9</b>	<b>26.3</b>	<b>25.2</b>	<b>26.6</b>	<b>26.9</b>
3H	24.5	25.7	24.8	26.0	26.4	25.8	27.1	26.1	27.4	27.7
4H	24.7	25.9	25.1	26.2	26.6	26.1	27.3	26.4	27.6	27.9
6H	24.9	26.0	25.3	26.3	26.7	26.2	27.4	26.6	27.7	28.1
8H	24.9	26.0	25.3	26.4	26.7	26.3	27.4	26.7	27.7	28.1
12H	25.0	26.1	25.4	26.4	26.8	26.3	27.4	26.7	27.7	28.1
<b>4H 2H</b>	<b>24.5</b>	<b>25.7</b>	<b>24.8</b>	<b>26.0</b>	<b>26.3</b>	<b>25.3</b>	<b>26.6</b>	<b>25.7</b>	<b>26.9</b>	<b>27.2</b>
3H	25.2	26.3	25.7	26.7	27.0	26.5	27.5	26.9	27.9	28.3
4H	25.6	26.5	26.0	26.9	27.3	26.9	27.8	27.3	28.2	28.7
6H	25.8	26.7	26.3	27.1	27.5	27.2	28.0	27.7	28.5	28.9
8H	25.9	26.7	26.4	27.2	27.6	27.3	28.1	27.8	28.5	29.0
12H	26.1	26.8	26.6	27.2	27.7	27.4	28.1	27.8	28.5	29.0
<b>8H 4H</b>	<b>25.8</b>	<b>26.6</b>	<b>26.3</b>	<b>27.0</b>	<b>27.5</b>	<b>27.0</b>	<b>27.8</b>	<b>27.5</b>	<b>28.2</b>	<b>28.7</b>
6H	26.2	26.8	26.7	27.3	27.8	27.5	28.1	28.0	28.6	29.1
8H	26.4	27.0	26.9	27.5	28.0	27.7	28.2	28.2	28.7	29.3
12H	26.6	27.1	27.2	27.6	28.2	27.8	28.3	28.4	28.8	29.4
<b>12H 4H</b>	<b>25.8</b>	<b>26.5</b>	<b>26.3</b>	<b>27.0</b>	<b>27.5</b>	<b>27.0</b>	<b>27.7</b>	<b>27.5</b>	<b>28.2</b>	<b>28.7</b>
6H	26.3	26.8	26.8	27.3	27.9	27.5	28.1	28.0	28.6	29.1
8H	26.5	27.0	27.1	27.5	28.1	27.7	28.2	28.3	28.7	29.3
<b>Variations with the observer position at spacings(CIE Pub.117):</b>										
<b>S = 1.0H</b>	<b>+ 0.4 / - 0.5</b>					<b>+ 0.3 / - 0.4</b>				
<b>1.5H</b>	<b>+ 0.2 / - 0.4</b>					<b>+ 0.6 / - 0.7</b>				
<b>2.0H</b>	<b>+ 0.4 / - 0.9</b>					<b>+ 0.4 / - 1.1</b>				

CIE Pub.117, 8610 lm Total Lamp Luminous Flux Corrected (8log(F/F0) = 7.5)  
 Area: 0.077 m2

**C Range: 0 - 360DEG**  
**C Interval: 30.0DEG**  
**Test Speed: HIGH**  
**Temperature:25.3DEG**  
**Operators:DAMIN**  
**Test Date:2022-06-10**

**γ Range: 0 - 180DEG**  
**γ Interval: 1.0DEG**  
**Test System:EVERFINE GO-2000A\_V1 SYSTEM V2.00.443**  
**Humidity:65.0%**  
**Test Distance:8.000m [K=0.7063]**  
**Remarks:**

**UTILIZATION FACTORS TABLE**

Test:U:220.60V I:0.2460A P:53.000W PF:0.9740 Freq:50.00Hz Lamp Flux:8610.41x1 lm		
Name: NS51-50W	Type: LED	
MFR.: Lumega Group	DIM.: 1200*65*55mm	
	SUR.: 1180*65mm	

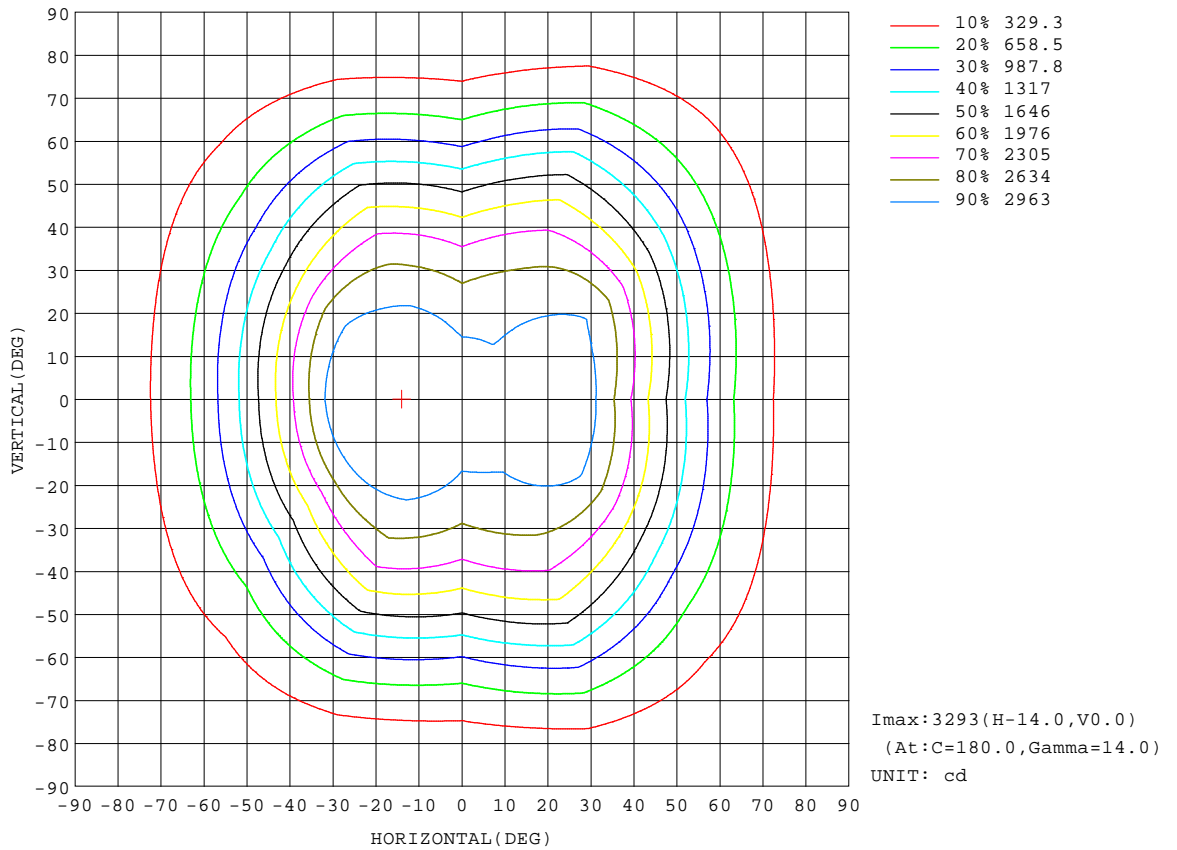
REFLECTANCE										
Ceiling	0.8	0.8	0.8	0.7	0.7	0.7	0.5	0.5	0.5	0
Walls	0.7	0.5	0.3	0.7	0.5	0.3	0.7	0.5	0.3	0
Working plane	0.2	0.2	0.2	0.2	0.2	0.2	0.2	0.2	0.2	0
ROOM INDEX	UTILIZATION FACTORS(PERCENT) $k(RI) \times RCR = 5$									
$k = 0.60$	60	49	42	59	48	42	57	48	42	35
0.80	70	59	52	69	58	52	67	57	51	44
1.00	78	68	61	77	67	61	74	68	60	53
1.25	85	75	69	83	74	68	80	73	67	60
1.50	90	81	74	88	80	73	85	77	72	65
2.00	96	88	82	94	87	81	90	84	79	71
2.50	100	92	87	97	91	86	93	88	83	75
3.00	103	96	91	100	95	90	96	91	87	78
4.00	106	101	97	104	99	95	99	95	92	82
5.00	108	104	100	106	102	98	101	97	95	84
ROOM INDEX	UF(total)									Direct
According to DIN EN 13032-2 2004			Suspended				SHR NOM = 1.25			

C Range: 0 - 360DEG  
 C Interval: 30.0DEG  
 Test Speed: HIGH  
 Temperature: 25.3DEG  
 Operators: DAMIN  
 Test Date: 2022-06-10

$\gamma$  Range: 0 - 180DEG  
 $\gamma$  Interval: 1.0DEG  
 Test System: EVERFINE GO-2000A\_V1 SYSTEM V2.00.443  
 Humidity: 65.0%  
 Test Distance: 8.000m [K=0.7063]  
 Remarks:

**ISOCANDELA DIAGRAM**

Test:U:220.60V I:0.2460A P:53.000W PF:0.9740 Freq:50.00Hz		
Lamp Flux:8610.41x1 l m		
Name: NS51-50W	Type: LED	
MFR.: Lumega Group	DIM.: 1200*65*55mm	
	SUR.: 1180*65mm	



**C Range: 0 - 360DEG**  
**C Interval: 30.0DEG**  
**Test Speed: HIGH**  
**Temperature: 25.3DEG**  
**Operators: DAMIN**  
**Test Date: 2022-06-10**

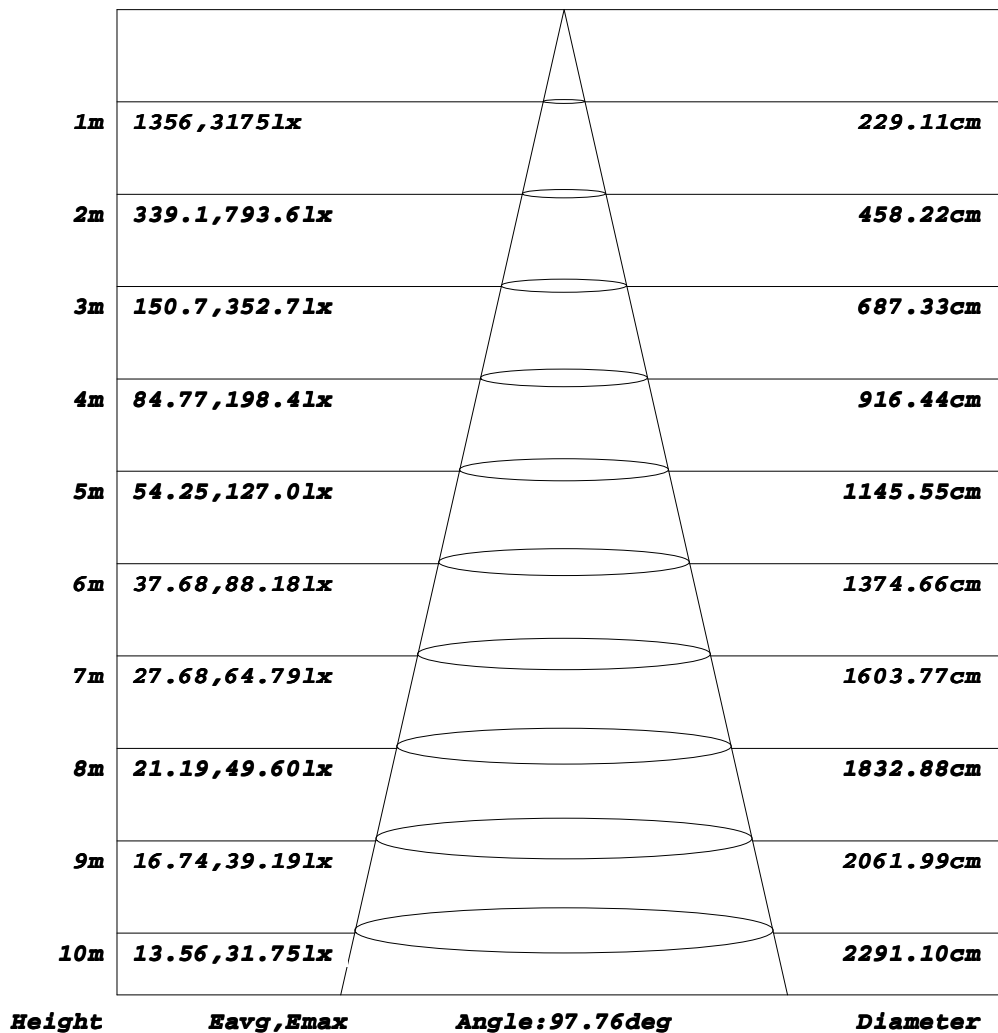
**γ Range: 0 - 180DEG**  
**γ Interval: 1.0DEG**  
**Test System: EVERFINE GO-2000A\_V1 SYSTEM V2.00.443**  
**Humidity: 65.0%**  
**Test Distance: 8.000m [K=0.7063]**  
**Remarks:**



**AAI Figure**

Test:U:220.60V I:0.2460A P:53.000W PF:0.9740 Freq:50.00Hz		
Lamp Flux:8610.4lx1 lm		
Name: NS51-50W	Type: LED	
MFR.: Lumega Group	DIM.: 1200*65*55mm	
	SUR.: 1180*65mm	

**Flux out:5639 lm**



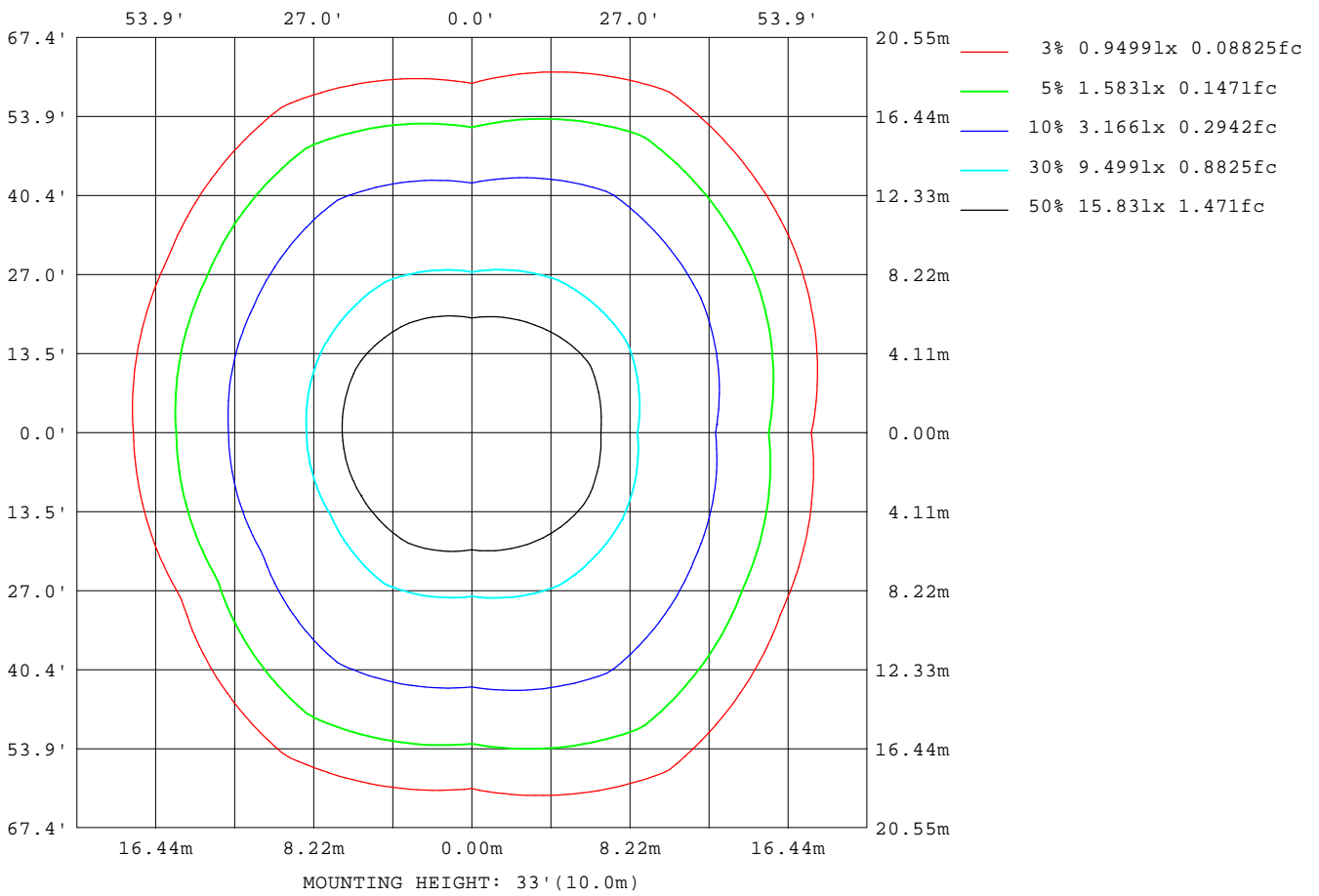
Note: The Curves indicate the illuminated area and the average illumination when the luminaire is at different distance.

**C Range: 0 - 360DEG**  
**C Interval: 30.0DEG**  
**Test Speed: HIGH**  
**Temperature: 25.3DEG**  
**Operators: DAMIN**  
**Test Date: 2022-06-10**

**γ Range: 0 - 180DEG**  
**γ Interval: 1.0DEG**  
**Test System: EVERFINE GO-2000A\_V1 SYSTEM V2.00.443**  
**Humidity: 65.0%**  
**Test Distance: 8.000m [K=0.7063]**  
**Remarks:**

**ISOLUX DIAGRAM**

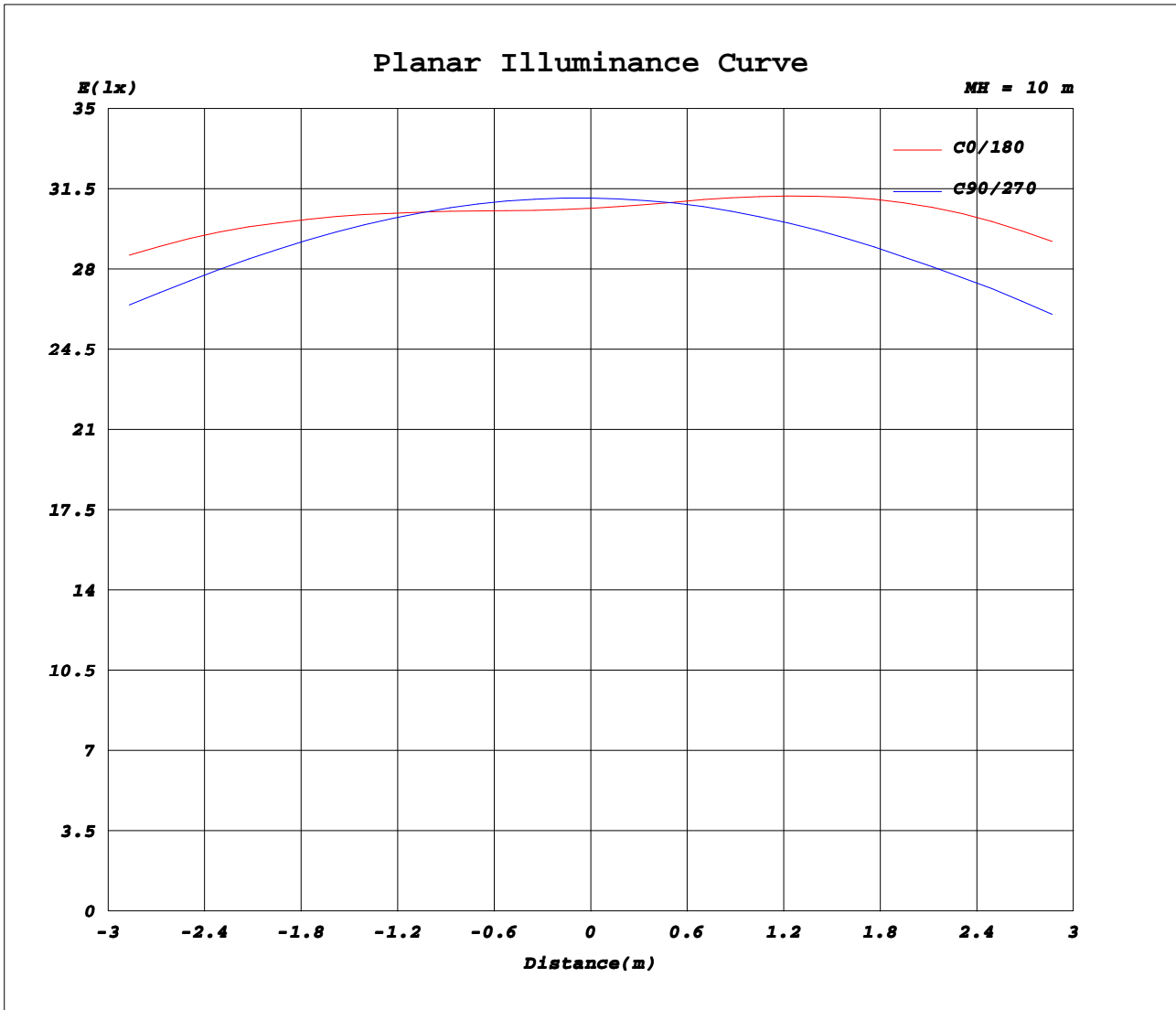
Test:U:220.60V I:0.2460A P:53.000W PF:0.9740 Freq:50.00Hz		
Lamp Flux:8610.41x1 lm		
Name: NS51-50W	Type: LED	
MFR.: Lumega Group	DIM.: 1200*65*55mm	
	SUR.: 1180*65mm	



**C Range: 0 - 360DEG**  
**C Interval: 30.0DEG**  
**Test Speed: HIGH**  
**Temperature: 25.3DEG**  
**Operators: DAMIN**  
**Test Date: 2022-06-10**

**γ Range: 0 - 180DEG**  
**γ Interval: 1.0DEG**  
**Test System: EVERFINE GO-2000A\_V1 SYSTEM V2.00.443**  
**Humidity: 65.0%**  
**Test Distance: 8.000m [K=0.7063]**  
**Remarks:**

**Planar Illuminance Curve**



**C Range: 0 - 360DEG**  
**C Interval: 30.0DEG**  
**Test Speed: HIGH**  
**Temperature: 25.3DEG**  
**Operators: DAMIN**  
**Test Date: 2022-06-10**

**γ Range: 0 - 180DEG**  
**γ Interval: 1.0DEG**  
**Test System: EVERFINE GO-2000A\_V1 SYSTEM V2.00.443**  
**Humidity: 65.0%**  
**Test Distance: 8.000m [K=0.7063]**  
**Remarks:**

**LUMINOUS DISTRIBUTION INTENSITY DATA**

Test:U:220.60V I:0.2460A P:53.000W PF:0.9740 Freq:50.00Hz		
Lamp Flux:8610.4lx1 lm		
Name: NS51-50W	Type: LED	
MFR.: Lumega Group	DIM.: 1200*65*55mm	
	SUR.: 1180*65mm	

Table--1

UNIT: cd

C(DEG) γ (DEG)	0	30	60	90	120	150	180	210	240	270	300	330							
0	3066	3066	3078	3110	3125	3115	3066	3066	3078	3110	3125	3115							
5	3087	3070	3050	3103	3174	3209	3148	3134	3109	3087	3062	3052							
10	3158	3117	3026	3064	3195	3277	3250	3211	3120	3032	3007	3067							
15	3217	3165	3001	2993	3180	3266	3292	3245	3107	2952	2959	3109							
20	3213	3162	2957	2893	3117	3206	3258	3203	3057	2841	2912	3137							
25	3176	3115	2891	2760	3006	3117	3201	3126	2957	2697	2844	3108							
30	3037	3034	2790	2595	2861	2962	3074	3015	2818	2527	2748	3047							
35	2666	2847	2648	2400	2678	2614	2682	2813	2642	2324	2616	2933							
40	2245	2495	2472	2175	2459	2182	2237	2421	2427	2090	2444	2661							
45	1836	2092	2253	1917	2188	1798	1832	2000	2177	1826	2235	2270							
50	1457	1702	2008	1627	1878	1419	1450	1621	1895	1536	1999	1880							
55	1112	1331	1710	1304	1525	1080	1095	1250	1562	1219	1716	1496							
60	819	999	1370	980	1173	775	808	926	1213	908	1392	1141							
65	582	712	1028	709	843	537	575	654	880	655	1054	834							
70	400	483	715	489	560	357	397	443	596	453	742	580							
75	266	315	461	321	346	229	267	289	377	298	488	385							
80	169	198	272	194	192	141	174	182	219	180	300	248							
85	106	118	142	93.1	85.8	78.5	111	108	107	87.5	166	154							
90	69.9	65.0	49.7	21.2	42.2	63.1	72.5	66.6	45.5	27.8	70.5	89.2							
95	67.8	62.3	41.9	22.4	42.3	62.6	71.4	65.0	45.2	27.0	47.3	65.4							
100	71.3	63.2	42.8	25.1	43.8	64.0	75.3	66.7	45.9	29.3	47.7	66.5							
105	73.8	65.0	45.1	28.3	46.9	66.3	77.1	67.9	48.1	31.8	49.0	68.2							
110	72.3	65.4	48.0	29.2	48.2	62.5	74.6	65.8	49.8	32.8	51.4	70.5							
115	68.4	63.2	48.5	31.6	49.4	61.9	70.2	64.0	50.6	35.9	50.6	65.9							
120	67.0	63.2	48.8	35.1	50.8	62.7	68.8	64.7	51.6	39.0	51.3	65.5							
125	67.1	62.4	49.3	38.4	51.8	63.4	69.0	65.4	52.6	41.9	51.6	64.5							
130	67.4	60.8	49.8	41.6	52.6	64.0	69.1	66.0	53.6	44.7	52.2	63.1							
135	67.7	60.5	50.5	44.9	53.3	64.3	69.1	66.4	54.7	47.7	52.9	61.6							
140	67.8	60.0	51.5	48.1	54.2	64.2	68.8	66.4	55.9	50.7	54.1	61.5							
145	67.6	59.7	53.0	51.5	55.3	63.8	68.1	66.1	57.2	53.8	55.6	61.9							
150	66.9	59.6	55.5	55.1	57.3	63.2	67.2	65.4	58.9	56.9	57.5	61.9							
155	66.2	60.3	58.1	58.5	59.8	62.6	66.2	64.6	60.9	60.0	59.8	62.3							
160	65.2	61.6	61.0	61.7	62.4	62.8	65.3	64.1	63.3	62.9	62.0	63.1							
165	65.8	63.6	63.8	64.6	64.8	64.2	65.1	64.4	65.4	65.4	64.1	64.3							
170	67.0	66.0	66.4	66.9	66.8	66.1	66.4	65.7	67.1	67.5	66.4	65.5							
175	68.1	67.9	68.5	69.0	68.7	67.6	67.7	67.0	68.3	68.9	68.1	66.9							
180	68.4	68.1	69.3	69.8	69.2	68.2	68.4	68.1	69.3	69.8	69.2	68.2							

**C Range: 0 - 360DEG**  
**C Interval: 30.0DEG**  
**Test Speed: HIGH**  
**Temperature:25.3DEG**  
**Operators:DAMIN**  
**Test Date:2022-06-10**

**γ Range: 0 - 180DEG**  
**γ Interval: 1.0DEG**  
**Test System:EVERFINE GO-2000A\_V1 SYSTEM V2.00.443**  
**Humidity:65.0%**  
**Test Distance:8.000m [K=0.7063]**  
**Remarks:**