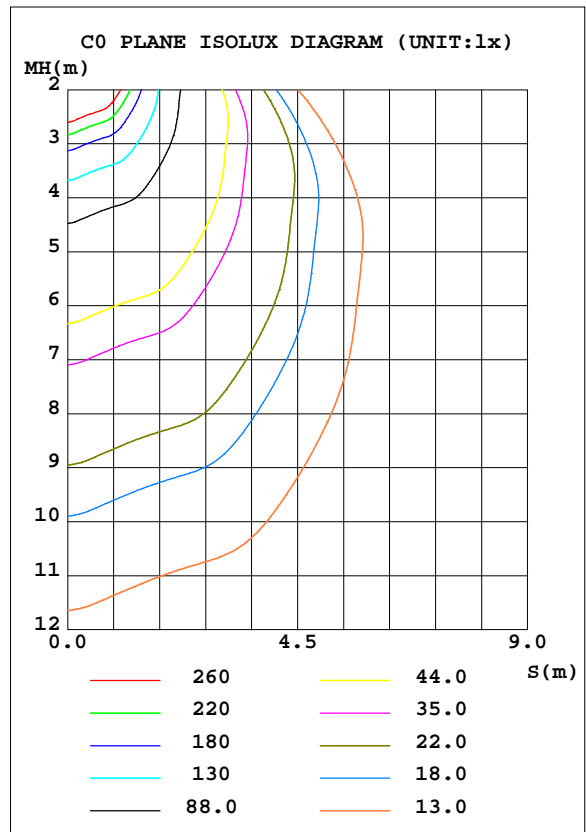
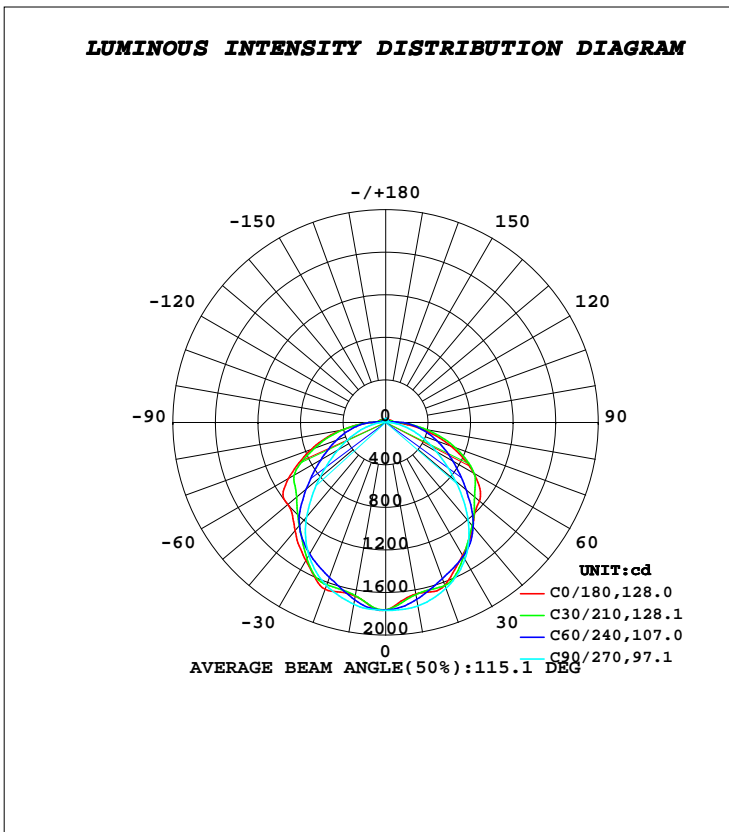


**LUMINAIRE PHOTOMETRIC TEST REPORT**

Test:U:221.70V I:0.1720A P:38.500W PF:0.9760 Freq:50.00Hz		
Lamp Flux:5591.2lx1 lm		
Name: NS59-1200MM-40W	Type: LED	
MFR.: Lumega Group	DIM.: 1200*100*75mm	
	SUR.: 1180*80mm	

DATA OF LAMP		PHOTOMETRIC DATA Eff: 145.23 lm/W			
MODEL		I <sub>max</sub> (cd)	1768	S/MH(C0/180)	1.23
NOMINAL POWER(W)	40	LOR(%)	100.0	S/MH(C90/270)	1.25
RATED VOLTAGE(V)	220	TOTAL FLUX(lm)	5591.2	η UP, DN(C0-180)	2.3,47.7
NOMINAL FLUX(lm)	5591.21	CIE CLASS	DIRECT	η UP, DN(C180-360)	2.4,47.7
LAMPS INSIDE	1	η up(%)	4.7	CIBSE SHR NOM	1.25
TEST VOLTAGE(V)	220	η down(%)	95.3	CIBSE SHR MAX	1.35



**C Range: 0 - 360DEG**  
**C Interval: 30.0DEG**  
**Test Speed: HIGH**  
**Temperature:25.3DEG**  
**Operators:DAMIN**  
**Test Date:2022-04-27**

**γ Range: 0 - 180DEG**  
**γ Interval: 1.0DEG**  
**Test System:EVERFINE GO-2000A\_V1 SYSTEM V2.00.443**  
**Humidity:65.0%**  
**Test Distance:8.000m [K=0.7063]**  
**Remarks:**

**ZONAL FLUX DIAGRAM**

**ZONAL FLUX DIAGRAM:**

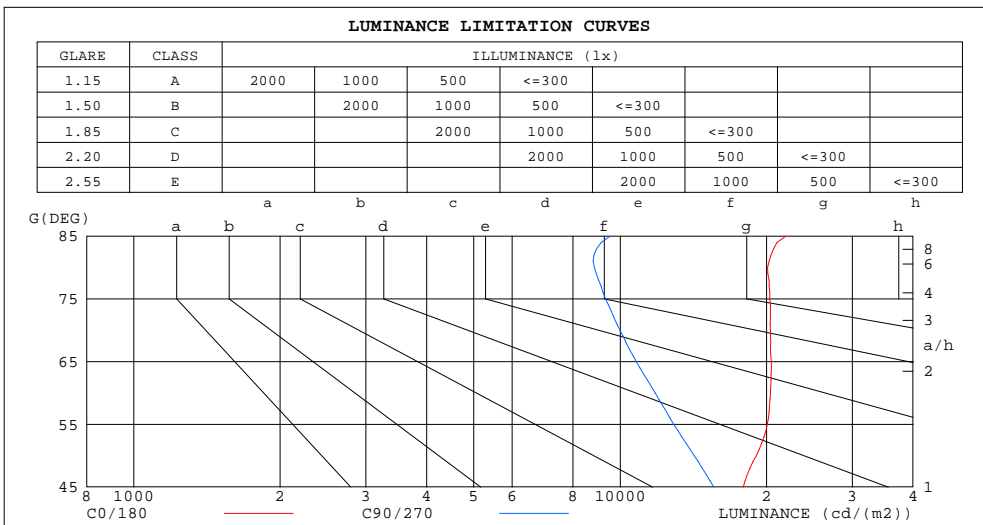
$\gamma$	C0	C45	C90	C135	C180	C225	C270	C315	$\gamma$	$\Phi$ zone	$\Phi$ total	%lum,lamp
10	1638	1667	1752	1673	1659	1673	1735	1664	0- 10	163.5	163.5	2.92,2.92
20	1628	1597	1658	1611	1670	1587	1631	1591	10- 20	465.0	628.5	11.2,11.2
30	1445	1459	1489	1482	1501	1455	1444	1454	20- 30	713.9	1342	24,24
40	1274	1274	1210	1289	1325	1265	1157	1260	30- 40	856.5	2199	39.3,39.3
50	1150	1041	857.8	1056	1202	1037	810.1	1032	40- 50	882.8	3082	55.1,55.1
60	956.6	846.8	554.8	881.6	1056	849.4	520.0	847.6	50- 60	833.4	3915	70,70
70	654.7	609.1	321.1	632.0	748.2	603.5	300.8	615.4	60- 70	697.2	4612	82.5,82.5
80	328.0	360.3	144.4	383.8	427.0	367.2	131.4	369.6	70- 80	481.4	5094	91.1,91.1
90	95.53	137.9	38.97	140.3	132.5	142.7	38.10	141.1	80- 90	236.3	5330	95.3,95.3
100	61.34	55.59	24.61	58.20	68.38	59.38	26.96	58.18	90-100	83.97	5414	96.8,96.8
110	52.42	38.18	21.48	40.52	59.38	41.78	23.65	41.02	100-110	48.74	5463	97.7,97.7
120	39.59	28.28	19.42	29.84	46.45	32.46	22.74	32.08	110-120	34.97	5498	98.3,98.3
130	29.89	24.87	22.11	25.60	34.52	28.02	25.03	27.88	120-130	25.77	5524	98.8,98.8
140	29.01	26.99	25.39	27.30	30.52	29.42	27.99	29.31	130-140	21.15	5545	99.2,99.2
150	31.23	29.82	28.90	30.05	32.20	31.68	30.89	31.49	140-150	18.50	5563	99.5,99.5
160	33.55	32.77	32.31	32.84	33.98	33.79	33.55	33.64	150-160	14.79	5578	99.8,99.8
170	36.17	35.27	35.12	35.33	35.96	35.51	35.55	35.45	160-170	9.730	5588	99.9,99.9
180	36.96	36.24	36.25	36.19	37.13	36.19	36.27	36.15	170-180	3.432	5591	100,100
DEG	<b>LUMINOUS INTENSITY:cd</b>									<b>UNIT:lm</b>		

**C Range: 0 - 360DEG**  
**C Interval: 30.0DEG**  
**Test Speed: HIGH**  
**Temperature:25.3DEG**  
**Operators:DAMIN**  
**Test Date:2022-04-27**

**$\gamma$  Range: 0 - 180DEG**  
 **$\gamma$  Interval: 1.0DEG**  
**Test System:EVERFINE GO-2000A\_V1 SYSTEM V2.00.443**  
**Humidity:65.0%**  
**Test Distance:8.000m [K=0.7063]**  
**Remarks:**

**LUMINANCE LIMITATION CURVES**

Test:U:221.70V I:0.1720A P:38.500W PF:0.9760 Freq:50.00Hz		
Lamp Flux:5591.2lx1 lm		
Name: NS59-1200MM-40W	Type: LED	
MFR.: Lumega Group	DIM.: 1200*100*75mm	
	SUR.: 1180*80mm	



LUMINANCE cd/(m2)		
G(DEG)	C0/180	C90/270
85	21917	9534
80	20093	8849
75	20302	9338
70	20363	9989
65	20445	10802
60	20353	11804
55	20070	12897
50	19041	14197
45	17907	15572

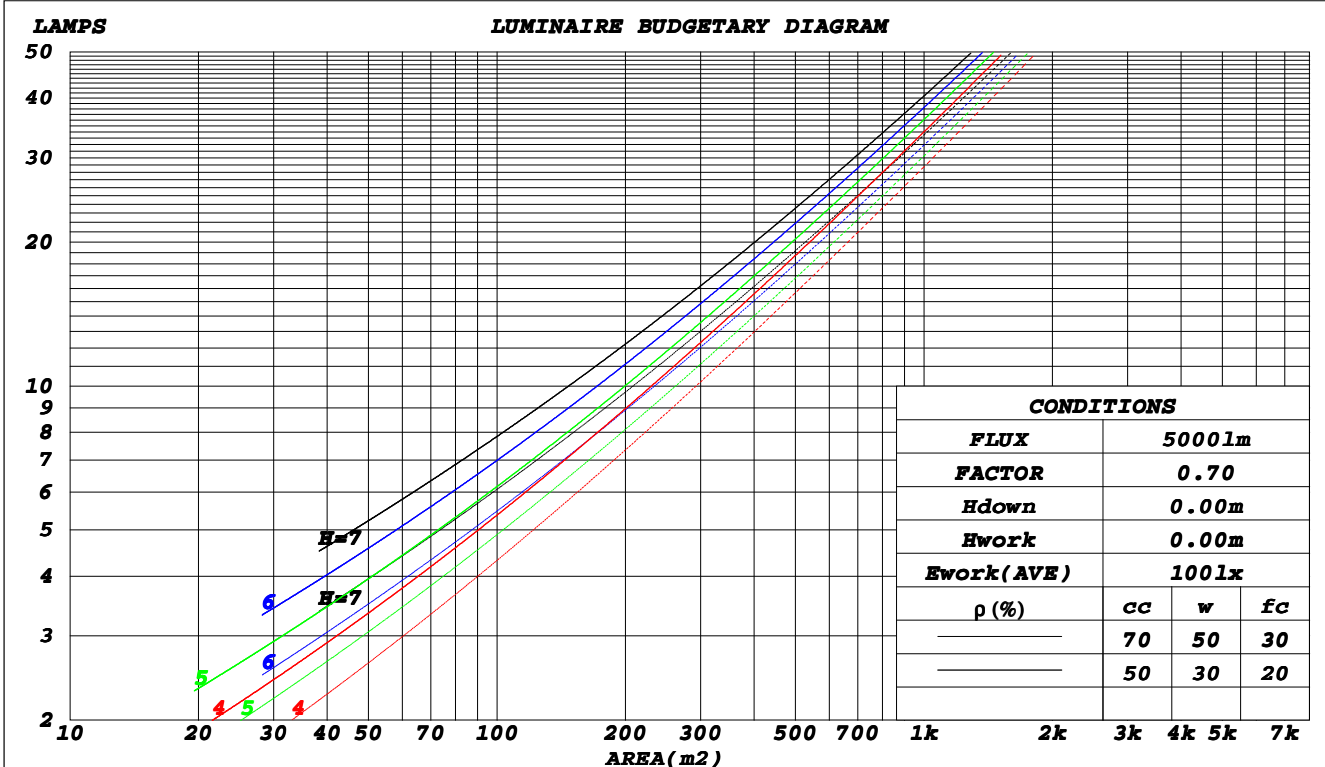
**C Range: 0 - 360DEG**  
**C Interval: 30.0DEG**  
**Test Speed: HIGH**  
**Temperature: 25.3DEG**  
**Operators: DAMIN**  
**Test Date: 2022-04-27**

**γ Range: 0 - 180DEG**  
**γ Interval: 1.0DEG**  
**Test System: EVERFINE GO-2000A\_V1 SYSTEM V2.00.443**  
**Humidity: 65.0%**  
**Test Distance: 8.000m [K=0.7063]**  
**Remarks:**

**CU AND LUMINAIRE BUDGETARY ESTIMATE DIAGRAM**

Test:U:221.70V I:0.1720A P:38.500W PF:0.9760 Freq:50.00Hz		
Lamp Flux:5591.2lx1 lm		
Name: NS59-1200MM-40W	Type: LED	
MFR.: Lumega Group	DIM.: 1200*100*75mm	
	SUR.: 1180*80mm	

$\rho_{cc}$	80%			70%			50%			30%			10%			0
$\rho_w$	50%	30%	10%	50%	30%	10%	50%	30%	10%	50%	30%	10%	50%	30%	10%	0
$\rho_{fc}$	20%			20%			20%			20%			20%			0
<b>RCR</b>	<b>RCR:Room Cavity Ratio</b>						<b>Coefficients of Utilization(CU)</b>									
0.0	1.18	1.18	1.18	1.15	1.15	1.15	1.09	1.09	1.09	1.03	1.03	1.03	.98	.98	.98	.95
1.0	1.01	.96	.92	.98	.94	.90	.93	.89	.86	.88	.85	.83	.84	.82	.79	.77
2.0	.87	.80	.74	.85	.78	.72	.81	.75	.70	.77	.72	.68	.73	.69	.65	.63
3.0	.76	.68	.61	.74	.66	.60	.70	.64	.58	.67	.61	.57	.64	.59	.55	.52
4.0	.67	.58	.51	.66	.57	.50	.62	.55	.49	.59	.53	.48	.57	.51	.47	.44
5.0	.60	.51	.44	.58	.50	.43	.56	.48	.42	.53	.47	.41	.51	.45	.41	.38
6.0	.54	.45	.38	.53	.44	.38	.50	.43	.37	.48	.41	.36	.46	.40	.36	.33
7.0	.49	.40	.33	.48	.39	.33	.46	.38	.33	.44	.37	.32	.42	.36	.31	.29
8.0	.44	.36	.30	.44	.35	.30	.42	.34	.29	.40	.33	.29	.39	.33	.28	.26
9.0	.41	.32	.27	.40	.32	.27	.38	.31	.26	.37	.30	.26	.36	.30	.25	.23
10.0	.38	.30	.24	.37	.29	.24	.36	.29	.24	.34	.28	.23	.33	.27	.23	.21



C Range: 0 - 360DEG  
 C Interval: 30.0DEG  
 Test Speed: HIGH  
 Temperature: 25.3DEG  
 Operators: DAMIN  
 Test Date: 2022-04-27

$\gamma$  Range: 0 - 180DEG  
 $\gamma$  Interval: 1.0DEG  
 Test System: EVERFINE GO-2000A\_V1 SYSTEM V2.00.443  
 Humidity: 65.0%  
 Test Distance: 8.000m [K=0.7063]  
 Remarks:

**WEC AND CCEC**

Test:U:221.70V I:0.1720A P:38.500W PF:0.9760 Freq:50.00Hz		
Lamp Flux:5591.2lx1 lm		
Name: NS59-1200MM-40W	Type: LED	
MFR.: Lumega Group	DIM.: 1200*100*75mm	
	SUR.: 1180*80mm	

$\rho_{cc}$	80%			70%			50%			30%			10%			0
$\rho_w$	50%	30%	10%	50%	30%	10%	50%	30%	10%	50%	30%	10%	50%	30%	10%	0
$\rho_{fc}$	20%			20%			20%			20%			20%			0
<b>RCR</b>	<b>RCR:Room Cavity Ratio</b>						<b>Wall Exitance Coefficients(WEC)</b>									
0.0																
1.0	.344	.196	.062	.336	.191	.061	.319	.183	.059	.305	.176	.056	.291	.169	.054	
2.0	.312	.171	.052	.304	.168	.052	.290	.161	.050	.277	.155	.049	.264	.150	.047	
3.0	.283	.151	.045	.276	.148	.045	.264	.143	.043	.252	.138	.042	.241	.133	.041	
4.0	.258	.134	.039	.252	.132	.039	.241	.128	.038	.230	.124	.037	.220	.120	.036	
5.0	.237	.121	.035	.231	.119	.035	.221	.115	.034	.212	.112	.033	.203	.108	.033	
6.0	.218	.110	.031	.214	.108	.031	.204	.105	.030	.196	.102	.030	.188	.099	.029	
7.0	.202	.100	.028	.198	.099	.028	.190	.096	.028	.182	.093	.027	.175	.091	.027	
8.0	.188	.092	.026	.184	.091	.026	.177	.088	.025	.170	.086	.025	.163	.084	.024	
9.0	.176	.085	.024	.173	.084	.024	.166	.082	.023	.159	.080	.023	.153	.078	.022	
10.0	.165	.079	.022	.162	.078	.022	.156	.076	.021	.150	.074	.021	.144	.073	.021	

$\rho_{cc}$	80%			70%			50%			30%			10%			0
$\rho_w$	50%	30%	10%	50%	30%	10%	50%	30%	10%	50%	30%	10%	50%	30%	10%	0
$\rho_{fc}$	20%			20%			20%			20%			20%			0
<b>RCR</b>	<b>RCR:Room Cavity Ratio</b>						<b>Ceiling Cavity Exitance Coefficients(CCEC)</b>									
0.0	.226	.226	.226	.193	.193	.193	.132	.132	.132	.076	.076	.076	.024	.024	.024	
1.0	.219	.192	.168	.187	.165	.144	.128	.113	.100	.074	.065	.058	.024	.021	.019	
2.0	.211	.168	.132	.181	.145	.114	.124	.100	.079	.071	.058	.047	.023	.019	.015	
3.0	.203	.151	.109	.174	.130	.094	.120	.090	.066	.069	.053	.039	.022	.017	.013	
4.0	.196	.138	.093	.168	.119	.081	.115	.083	.057	.067	.049	.034	.021	.016	.011	
5.0	.188	.127	.083	.161	.110	.072	.111	.077	.051	.064	.045	.030	.021	.015	.010	
6.0	.181	.119	.075	.155	.103	.065	.107	.072	.046	.062	.043	.028	.020	.014	.009	
7.0	.174	.112	.069	.149	.097	.061	.103	.068	.043	.060	.040	.026	.019	.013	.008	
8.0	.167	.107	.065	.144	.092	.057	.099	.065	.040	.058	.038	.024	.019	.013	.008	
9.0	.161	.102	.062	.138	.088	.054	.096	.062	.038	.056	.037	.023	.018	.012	.008	
10.0	.155	.097	.059	.134	.085	.052	.093	.060	.037	.054	.035	.022	.018	.012	.007	

**C Range: 0 - 360DEG**  
**C Interval: 30.0DEG**  
**Test Speed: HIGH**  
**Temperature:25.3DEG**  
**Operators:DAMIN**  
**Test Date:2022-04-27**

**$\gamma$  Range: 0 - 180DEG**  
 **$\gamma$  Interval: 1.0DEG**  
**Test System:EVERFINE GO-2000A\_V1 SYSTEM V2.00.443**  
**Humidity:65.0%**  
**Test Distance:8.000m [K=0.7063]**  
**Remarks:**

**UGR(Unified Glare Rating) Table**

Test:U:221.70V I:0.1720A P:38.500W PF:0.9760 Freq:50.00Hz		
Lamp Flux:5591.2lx1 lm		
Name: NS59-1200MM-40W	Type: LED	
MFR.: Lumega Group	DIM.: 1200*100*75mm	
	SUR.: 1180*80mm	

ceiling/cavity	0.7	0.7	0.5	0.5	0.3	0.7	0.7	0.5	0.5	0.3
walls	0.5	0.3	0.5	0.3	0.3	0.5	0.3	0.5	0.3	0.3
working plane	0.2	0.2	0.2	0.2	0.2	0.2	0.2	0.2	0.2	0.2
Room dimensions	Viewed crosswise					Viewed endwise				
<b>x = 2H y = 2H</b>	23.3	24.8	23.6	25.1	25.4	21.4	22.9	21.7	23.2	23.5
3H	25.3	26.7	25.6	27.0	27.3	22.7	24.1	23.0	24.4	24.7
4H	26.1	27.4	26.5	27.8	28.1	23.2	24.5	23.6	24.9	25.2
6H	26.8	28.0	27.2	28.4	28.8	23.6	24.9	24.0	25.2	25.6
8H	27.1	28.3	27.5	28.6	29.0	23.8	25.0	24.2	25.4	25.7
12H	27.3	28.4	27.7	28.8	29.2	23.9	25.1	24.3	25.4	25.8
<b>4H 2H</b>	23.9	25.2	24.3	25.5	25.9	22.5	23.8	22.8	24.1	24.5
3H	26.1	27.3	26.6	27.7	28.1	24.0	25.2	24.5	25.6	26.0
4H	27.2	28.2	27.6	28.6	29.1	24.8	25.8	25.2	26.2	26.7
6H	28.0	29.0	28.5	29.4	29.9	25.4	26.3	25.8	26.8	27.2
8H	28.4	29.3	28.9	29.7	30.2	25.6	26.5	26.1	27.0	27.4
12H	28.7	29.5	29.2	30.0	30.5	25.8	26.6	26.3	27.1	27.6
<b>8H 4H</b>	27.5	28.4	28.0	28.8	29.3	25.5	26.4	26.0	26.9	27.4
6H	28.6	29.4	29.1	29.8	30.4	26.5	27.2	27.0	27.7	28.2
8H	29.1	29.8	29.6	30.3	30.8	26.9	27.6	27.5	28.1	28.6
12H	29.6	30.1	30.1	30.7	31.2	27.3	27.9	27.9	28.4	29.0
<b>12H 4H</b>	27.5	28.3	28.0	28.8	29.3	25.7	26.5	26.2	26.9	27.5
6H	28.7	29.4	29.3	29.9	30.5	26.8	27.4	27.3	27.9	28.5
8H	29.3	29.9	29.9	30.4	31.0	27.3	27.9	27.9	28.4	29.0
<b>Variations with the observer position at spacings(CIE Pub.117):</b>										
<b>S = 1.0H</b>	+ 0.1 / - 0.1					+ 0.2 / - 0.2				
1.5H	+ 0.2 / - 0.3					+ 0.2 / - 0.3				
2.0H	+ 0.2 / - 0.4					+ 0.2 / - 0.4				

CIE Pub.117, 5591 lm Total Lamp Luminous Flux Corrected ( $8\log(F/F_0) = 6.0$ )  
 Area: 0.094 m<sup>2</sup>

**C Range: 0 - 360DEG**  
**C Interval: 30.0DEG**  
**Test Speed: HIGH**  
**Temperature:25.3DEG**  
**Operators:DAMIN**  
**Test Date:2022-04-27**

**γ Range: 0 - 180DEG**  
**γ Interval: 1.0DEG**  
**Test System:EVERFINE GO-2000A\_V1 SYSTEM V2.00.443**  
**Humidity:65.0%**  
**Test Distance:8.000m [K=0.7063]**  
**Remarks:**

**UTILIZATION FACTORS TABLE**

Test:U:221.70V I:0.1720A P:38.500W PF:0.9760 Freq:50.00Hz		
Lamp Flux:5591.2lx1 lm		
Name: NS59-1200MM-40W	Type: LED	
MFR.: Lumega Group	DIM.: 1200*100*75mm	
	SUR.: 1180*80mm	

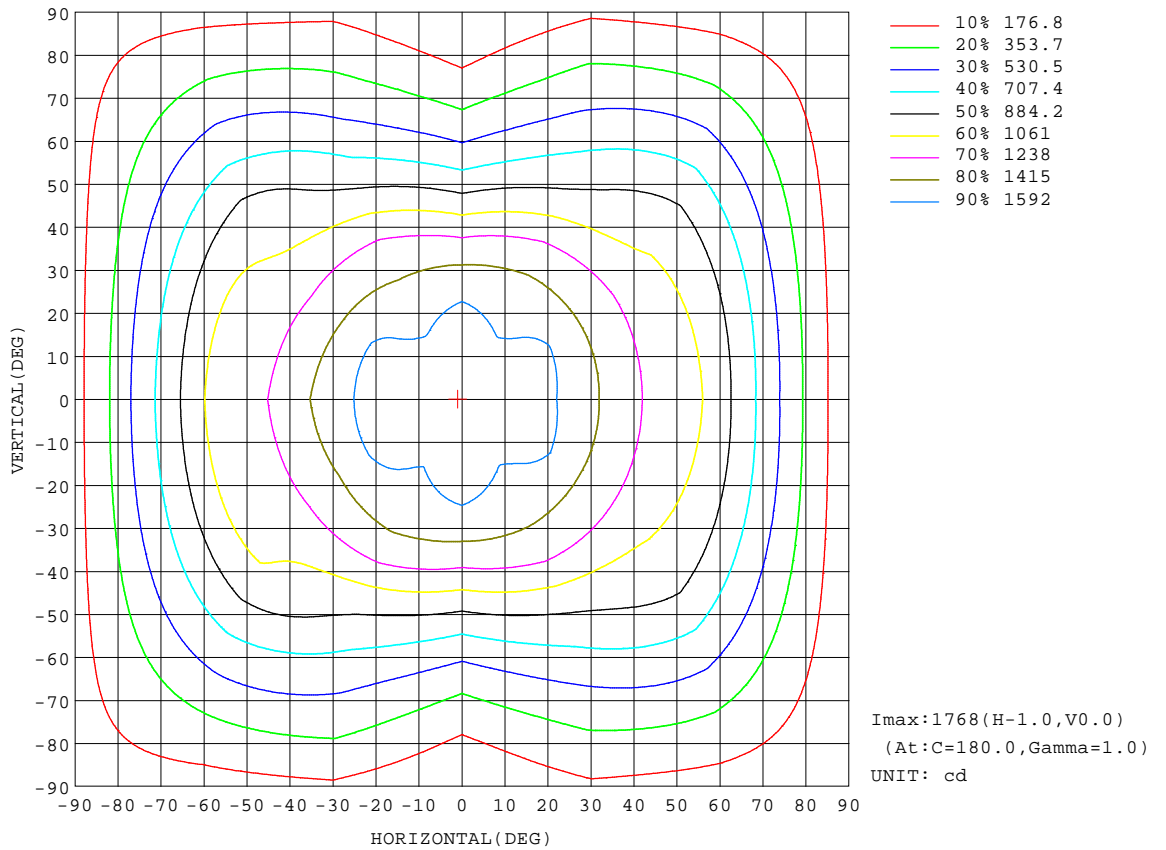
REFLECTANCE										
Ceiling	0.8	0.8	0.8	0.7	0.7	0.7	0.5	0.5	0.5	0
Walls	0.7	0.5	0.3	0.7	0.5	0.3	0.7	0.5	0.3	0
Working plane	0.2	0.2	0.2	0.2	0.2	0.2	0.2	0.2	0.2	0
<b>ROOM INDEX</b>	<b>UTILIZATION FACTORS(PERCENT) <math>k(RI) \times RCR = 5</math></b>									
<b>k = 0.60</b>	54	43	35	54	42	35	52	42	35	28
<b>0.80</b>	64	52	44	63	51	44	61	51	44	36
<b>1.00</b>	72	60	53	71	60	52	68	61	52	44
<b>1.25</b>	79	68	60	77	67	60	74	65	59	51
<b>1.50</b>	84	73	66	82	72	65	79	70	64	55
<b>2.00</b>	91	82	75	89	80	74	85	78	72	63
<b>2.50</b>	95	87	80	93	85	79	88	82	77	67
<b>3.00</b>	99	91	85	96	89	84	92	86	81	71
<b>4.00</b>	103	97	91	100	95	90	95	91	86	76
<b>5.00</b>	106	100	96	103	98	94	98	94	90	79
<b>ROOM INDEX</b>	<b>UF(total)</b>									<b>Direct</b>
<b>According to DIN EN 13032-2 2004</b>			<b>Suspended</b>					<b>SHRNO = 1.25</b>		

**C Range: 0 - 360DEG**  
**C Interval: 30.0DEG**  
**Test Speed: HIGH**  
**Temperature:25.3DEG**  
**Operators:DAMIN**  
**Test Date:2022-04-27**

**$\gamma$  Range: 0 - 180DEG**  
 **$\gamma$  Interval: 1.0DEG**  
**Test System:EVERFINE GO-2000A\_V1 SYSTEM V2.00.443**  
**Humidity:65.0%**  
**Test Distance:8.000m [K=0.7063]**  
**Remarks:**

**ISOCANDELA DIAGRAM**

Test:U:221.70V I:0.1720A P:38.500W PF:0.9760 Freq:50.00Hz		
Lamp Flux:5591.2lx1 lm		
Name: NS59-1200MM-40W	Type: LED	
MFR.: Lumega Group	DIM.: 1200*100*75mm	
	SUR.: 1180*80mm	



**C Range: 0 - 360DEG**  
**C Interval: 30.0DEG**  
**Test Speed: HIGH**  
**Temperature:25.3DEG**  
**Operators:DAMIN**  
**Test Date:2022-04-27**

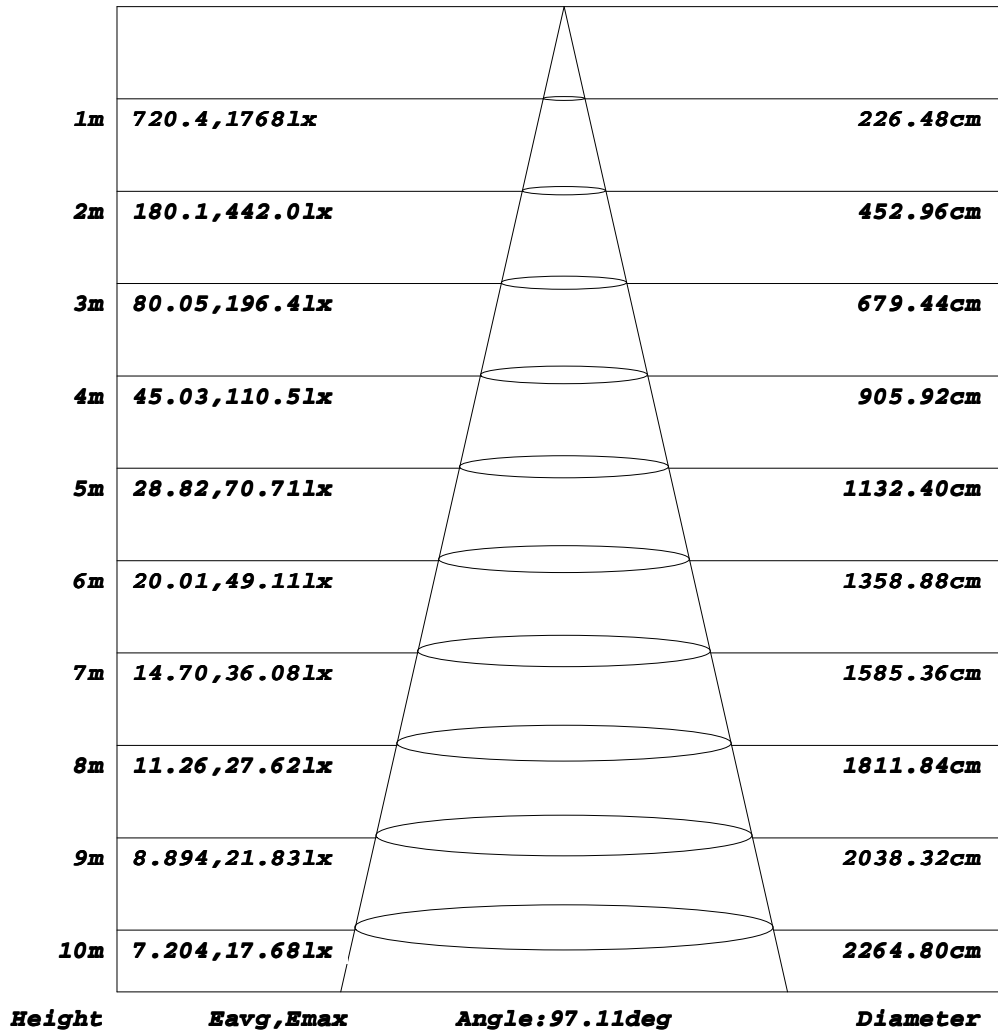
**γ Range: 0 - 180DEG**  
**γ Interval: 1.0DEG**  
**Test System:EVERFINE GO-2000A\_V1 SYSTEM V2.00.443**  
**Humidity:65.0%**  
**Test Distance:8.000m [K=0.7063]**  
**Remarks:**



**AAI Figure**

Test:U:221.70V I:0.1720A P:38.500W PF:0.9760 Freq:50.00Hz		
Lamp Flux:5591.2lx1 lm		
Name: NS59-1200MM-40W	Type: LED	
MFR.: Lumega Group	DIM.: 1200*100*75mm	
	SUR.: 1180*80mm	

**Flux out:2995 lm**



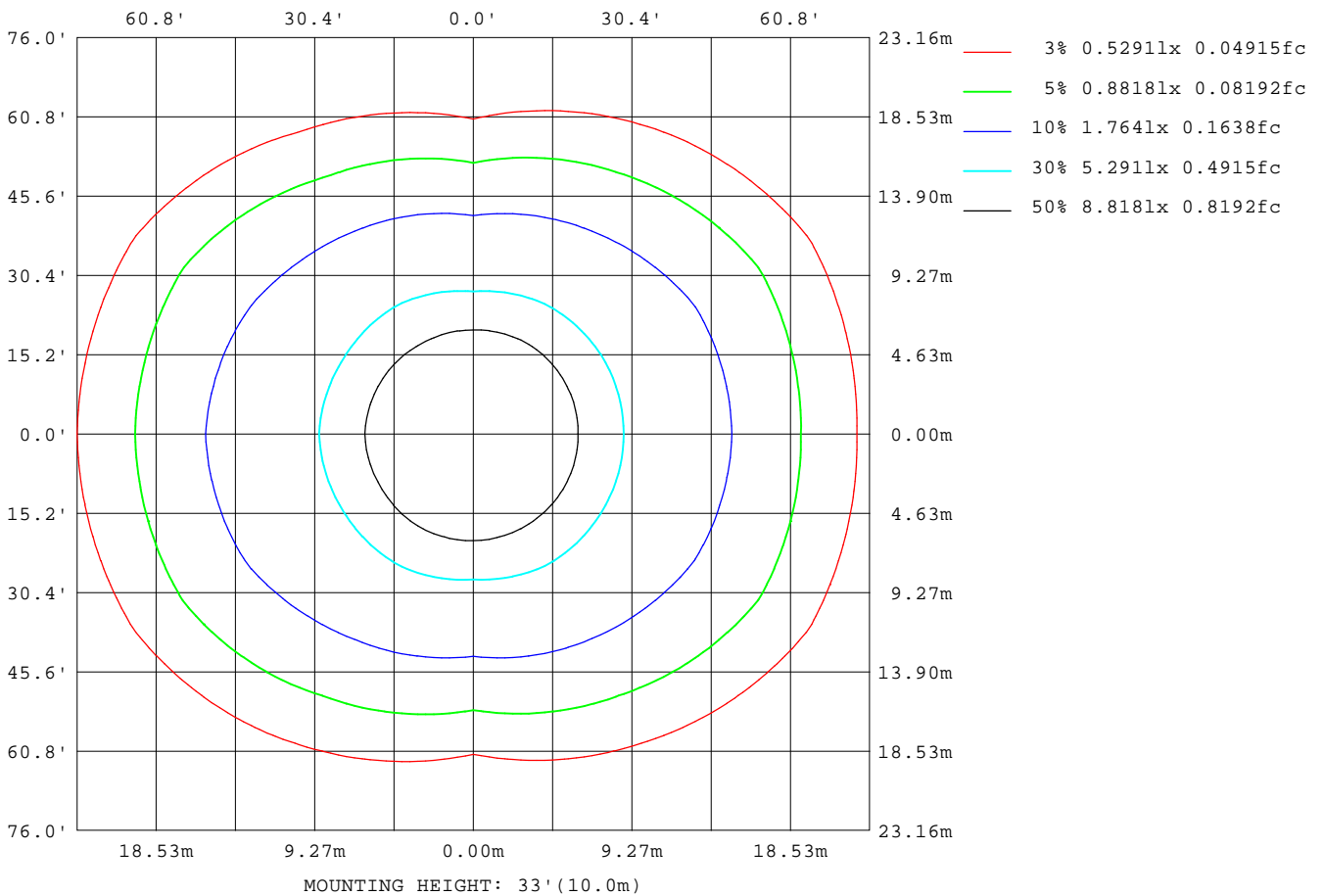
Note: The Curves indicate the illuminated area and the average illumination when the luminaire is at different distance.

**C Range: 0 - 360DEG**  
**C Interval: 30.0DEG**  
**Test Speed: HIGH**  
**Temperature: 25.3DEG**  
**Operators: DAMIN**  
**Test Date: 2022-04-27**

**γ Range: 0 - 180DEG**  
**γ Interval: 1.0DEG**  
**Test System: EVERFINE GO-2000A\_V1 SYSTEM V2.00.443**  
**Humidity: 65.0%**  
**Test Distance: 8.000m [K=0.7063]**  
**Remarks:**

**ISOLUX DIAGRAM**

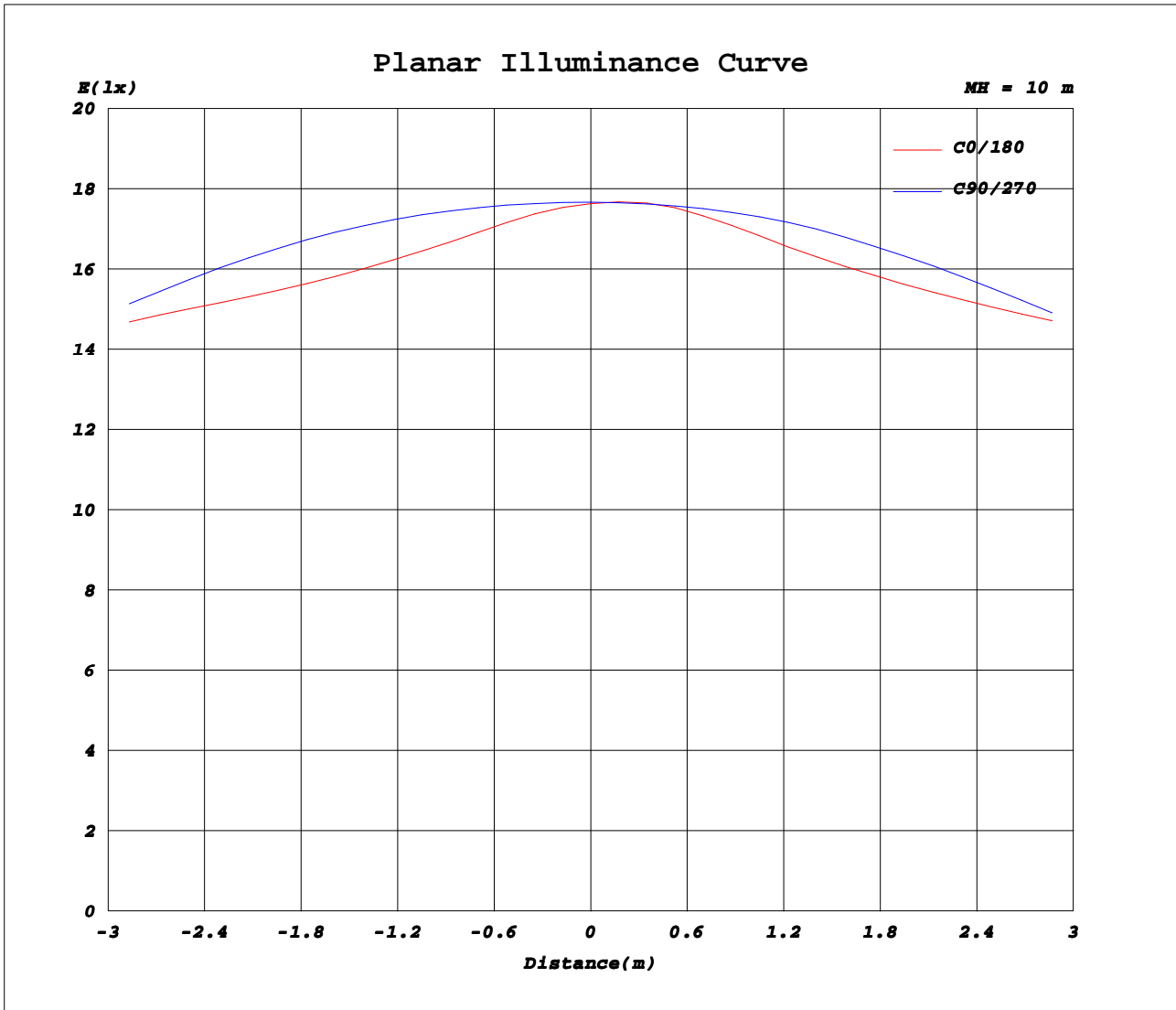
Test:U:221.70V I:0.1720A P:38.500W PF:0.9760 Freq:50.00Hz		
Lamp Flux:5591.21x1 lm		
Name: NS59-1200MM-40W	Type: LED	
MFR.: Lumega Group	DIM.: 1200*100*75mm	
	SUR.: 1180*80mm	



**C Range: 0 - 360DEG**  
**C Interval: 30.0DEG**  
**Test Speed: HIGH**  
**Temperature: 25.3DEG**  
**Operators: DAMIN**  
**Test Date: 2022-04-27**

**γ Range: 0 - 180DEG**  
**γ Interval: 1.0DEG**  
**Test System: EVERFINE GO-2000A\_V1 SYSTEM V2.00.443**  
**Humidity: 65.0%**  
**Test Distance: 8.000m [K=0.7063]**  
**Remarks:**

**Planar Illuminance Curve**



**C Range: 0 - 360DEG**  
**C Interval: 30.0DEG**  
**Test Speed: HIGH**  
**Temperature: 25.3DEG**  
**Operators: DAMIN**  
**Test Date: 2022-04-27**

**γ Range: 0 - 180DEG**  
**γ Interval: 1.0DEG**  
**Test System: EVERFINE GO-2000A\_V1 SYSTEM V2.00.443**  
**Humidity: 65.0%**  
**Test Distance: 8.000m [K=0.7063]**  
**Remarks:**

**LUMINOUS DISTRIBUTION INTENSITY DATA**

Test:U:221.70V I:0.1720A P:38.500W PF:0.9760 Freq:50.00Hz Lamp Flux:5591.2lx1 lm		
Name: NS59-1200MM-40W	Type: LED	
MFR.: Lumega Group	DIM.: 1200*100*75mm	
	SUR.: 1180*80mm	

Table--1

UNIT: cd

C (DEG) \ γ (DEG)	0	30	60	90	120	150	180	210	240	270	300	330							
0	1764	1761	1764	1767	1768	1768	1764	1761	1764	1767	1768	1768							
5	1687	1703	1741	1765	1745	1721	1729	1725	1751	1762	1745	1711							
10	1638	1644	1689	1752	1689	1657	1659	1653	1692	1735	1683	1645							
15	1649	1627	1625	1713	1626	1644	1651	1626	1617	1689	1611	1626							
20	1628	1631	1563	1658	1571	1652	1670	1625	1550	1631	1550	1632							
25	1533	1571	1509	1586	1527	1593	1594	1587	1490	1551	1500	1568							
30	1445	1463	1456	1489	1481	1484	1501	1480	1430	1444	1449	1460							
35	1366	1355	1384	1363	1406	1378	1420	1366	1356	1315	1367	1357							
40	1274	1267	1281	1210	1295	1284	1325	1266	1263	1157	1253	1268							
45	1190	1180	1141	1035	1140	1194	1240	1176	1134	981	1112	1182							
50	1150	1092	990	858	990	1122	1202	1095	978	810	965	1099							
55	1082	1030	852	695	860	1083	1180	1041	832	655	836	1040							
60	957	961	732	555	747	1016	1056	994	705	520	728	967							
65	812	841	622	429	643	870	900	869	593	404	625	844							
70	655	700	518	321	548	716	748	714	493	301	528	702							
75	494	547	422	227	457	565	594	569	402	210	435	550							
80	328	391	330	144	360	408	427	419	316	131	346	393							
85	180	240	242	78.1	257	245	256	261	230	69.6	249	242							
90	95.5	124	151	39.0	153	127	133	140	145	38.1	155	128							
95	69.0	77.8	81.8	28.8	82.6	80.1	83.0	85.8	81.2	30.2	85.2	81.5							
100	61.3	61.9	49.3	24.6	52.3	64.1	68.4	67.0	51.7	27.0	52.6	63.7							
105	57.2	55.1	35.4	22.5	38.3	57.2	62.9	59.5	38.0	25.3	41.4	56.9							
110	52.4	48.7	27.7	21.5	29.6	51.5	59.4	53.4	30.2	23.6	32.9	49.1							
115	46.7	41.8	22.7	18.7	24.0	44.2	54.0	47.0	25.8	22.0	27.3	45.0							
120	39.6	34.5	22.1	19.4	22.7	37.0	46.5	39.6	25.3	22.7	25.6	38.6							
125	34.0	29.3	22.6	20.6	23.0	31.2	39.7	33.6	25.7	23.8	25.7	33.0							
130	29.9	26.2	23.5	22.1	23.8	27.4	34.5	29.8	26.2	25.0	26.3	29.4							
135	28.1	26.7	24.7	23.7	25.0	27.2	30.9	29.4	27.3	26.5	27.3	29.2							
140	29.0	27.9	26.1	25.4	26.5	28.1	30.5	30.2	28.6	28.0	28.5	30.1							
145	30.0	29.2	27.5	27.1	28.0	29.3	31.4	31.2	29.9	29.5	29.7	31.1							
150	31.2	30.5	29.2	28.9	29.6	30.5	32.2	32.1	31.2	30.9	30.9	32.0							
155	32.4	31.8	30.8	30.7	31.2	31.7	33.1	33.0	32.6	32.3	32.2	32.9							
160	33.5	33.1	32.4	32.3	32.8	32.9	34.0	33.8	33.8	33.5	33.4	33.8							
165	34.9	34.4	33.9	33.8	34.2	34.1	34.9	34.6	34.8	34.7	34.5	34.7							
170	36.2	35.4	35.1	35.1	35.4	35.3	36.0	35.4	35.6	35.6	35.4	35.5							
175	37.0	36.1	36.1	36.1	36.2	36.1	36.8	35.9	36.1	36.1	35.9	35.9							
180	37.0	36.2	36.3	36.3	36.2	36.2	37.1	36.2	36.2	36.3	36.2	36.1							

**C Range: 0 - 360DEG**  
**C Interval: 30.0DEG**  
**Test Speed: HIGH**  
**Temperature: 25.3DEG**  
**Operators: DAMIN**  
**Test Date: 2022-04-27**

**γ Range: 0 - 180DEG**  
**γ Interval: 1.0DEG**  
**Test System: EVERFINE GO-2000A\_V1 SYSTEM V2.00.443**  
**Humidity: 65.0%**  
**Test Distance: 8.000m [K=0.7063]**  
**Remarks:**