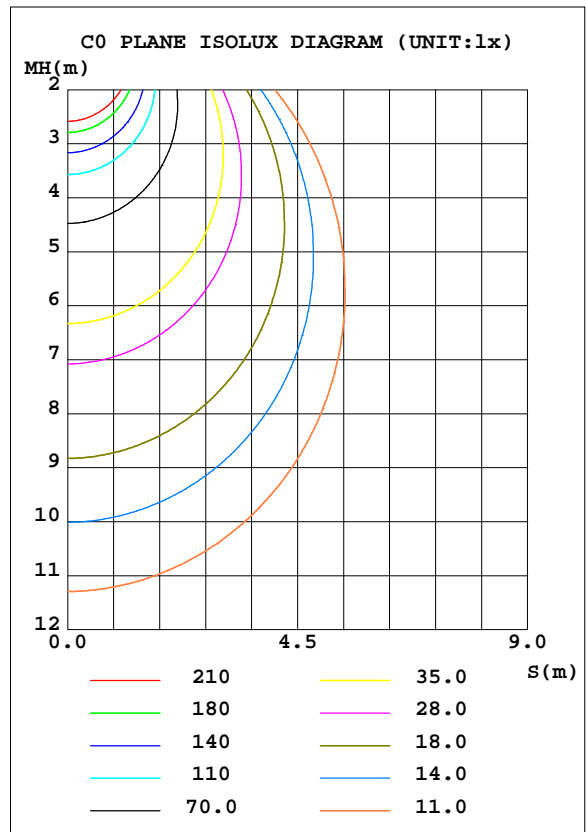
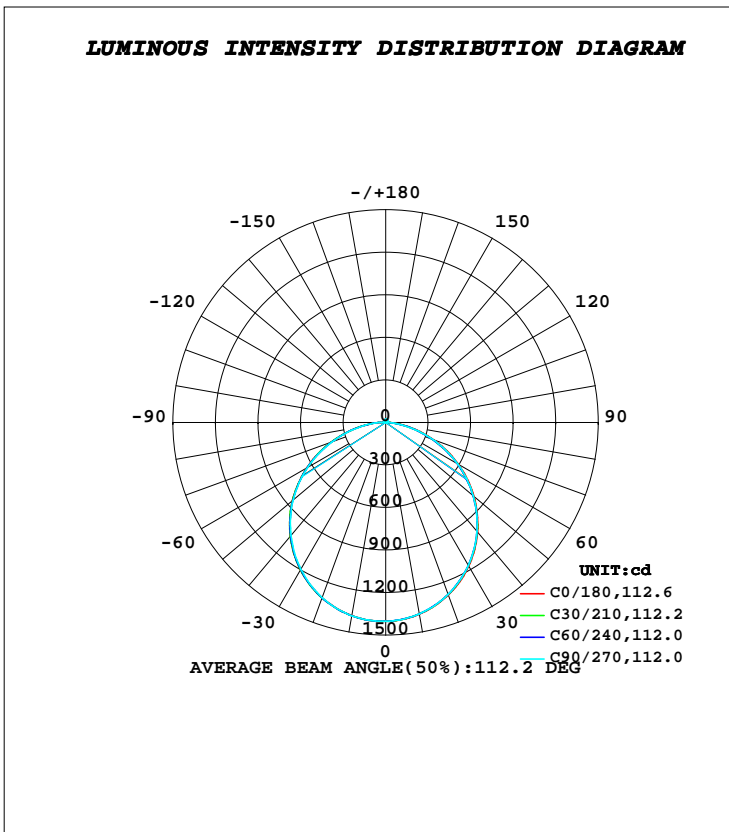


**LUMINAIRE PHOTOMETRIC TEST REPORT**

Test:U:220.60V I:0.1470A P:30.300W PF:0.9360 Freq:50.00Hz		
Lamp Flux:4105.9x1 lm		
Name: NS61-595X595-30W (Sensor)	Type: LED	
MFR.: Lumega Group	DIM.: 595*595mm	
	SUR.: 530*530mm	

DATA OF LAMP		PHOTOMETRIC DATA Eff: 135.51 lm/W			
MODEL		I <sub>max</sub> (cd)	1403	S/MH(C0/180)	1.24
NOMINAL POWER(W)	30	LOR(%)	100.0	S/MH(C90/270)	1.24
RATED VOLTAGE(V)	220	TOTAL FLUX(lm)	4105.9	η UP, DN(C0-180)	1.1,47.7
NOMINAL FLUX(lm)	4105.9	CIE CLASS	DIRECT	η UP, DN(C180-360)	1.2,50.1
LAMPS INSIDE	1	η up(%)	2.2	CIBSE SHR NOM	1.25
TEST VOLTAGE(V)	220	η down(%)	97.8	CIBSE SHR MAX	1.35



**C Range: 0 - 360DEG**  
**C Interval: 30.0DEG**  
**Test Speed: HIGH**  
**Temperature:25.3DEG**  
**Operators:DAMIN**  
**Test Date:2022-04-23**

**γ Range: 0 - 180DEG**  
**γ Interval: 1.0DEG**  
**Test System:EVERFINE GO-2000A\_V1 SYSTEM V2.00.443**  
**Humidity:65.0%**  
**Test Distance:8.000m [K=0.7063]**  
**Remarks:**

**ZONAL FLUX DIAGRAM**

**ZONAL FLUX DIAGRAM:**

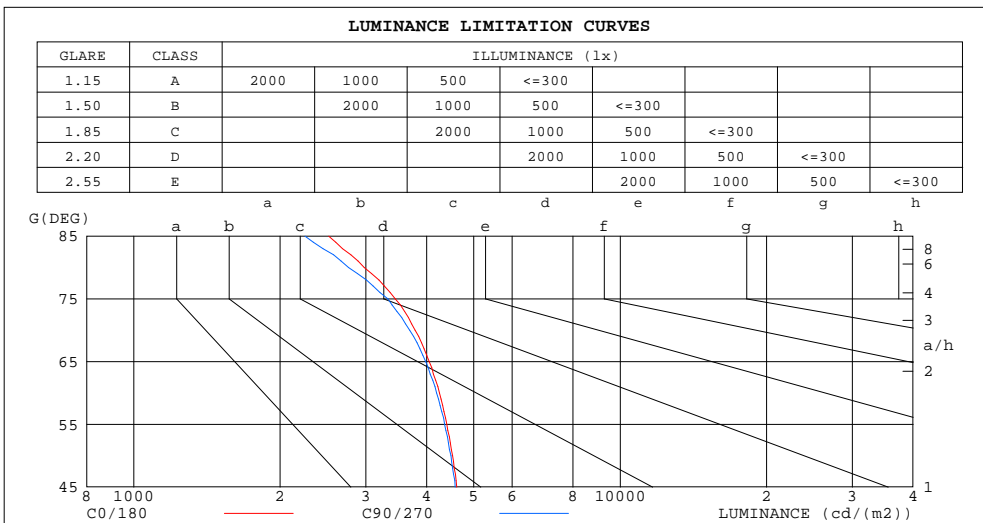
$\gamma$	C0	C45	C90	C135	C180	C225	C270	C315	$\gamma$	$\Phi$ zone	$\Phi$ total	%lum, lamp
10	1373	1370	1370	1376	1383	1384	1384	1379	0- 10	132.7	132.7	3.23,3.23
20	1295	1290	1290	1301	1314	1316	1313	1307	10- 20	379.9	512.6	12.5,12.5
30	1171	1166	1166	1181	1201	1201	1196	1188	20- 30	575.5	1088	26.5,26.5
40	1008	1004	1002	1022	1047	1046	1040	1029	30- 40	693.5	1782	43.4,43.4
50	814.3	806.4	807.9	829.6	860.7	857.6	853.6	836.8	40- 50	718.9	2501	60.9,60.9
60	594.8	585.0	587.4	609.5	643.5	640.8	637.3	618.7	50- 60	648.6	3149	76.7,76.7
70	363.1	350.8	353.6	376.5	411.8	409.1	405.1	387.3	60- 70	493.2	3642	88.7,88.7
80	144.9	136.8	134.5	157.5	190.0	188.1	181.7	168.9	70- 80	283.8	3926	95.6,95.6
90	7.746	8.139	7.766	10.52	24.37	27.01	25.44	18.81	80- 90	87.84	4014	97.8,97.8
100	9.754	9.708	9.566	9.841	11.76	11.64	11.53	11.56	90-100	11.35	4025	98,98
110	11.56	11.55	11.57	11.67	13.48	13.45	13.38	13.34	100-110	12.27	4038	98.3,98.3
120	13.24	13.28	13.33	13.41	15.11	15.07	15.01	14.92	110-120	13.23	4051	98.7,98.7
130	14.99	15.00	15.10	15.14	16.72	16.65	16.59	16.44	120-130	13.44	4064	99,99
140	16.69	16.74	16.83	16.89	18.24	18.18	18.09	17.96	130-140	12.86	4077	99.3,99.3
150	18.61	18.64	18.75	18.71	19.65	19.70	19.57	19.53	140-150	11.46	4089	99.6,99.6
160	20.49	20.43	20.63	20.43	21.13	21.10	21.12	20.97	150-160	9.228	4098	99.8,99.8
170	21.48	21.56	21.66	21.55	21.92	21.95	21.97	21.90	160-170	6.030	4104	99.9,99.9
180	21.95	22.07	22.09	22.03	21.96	22.06	22.09	22.04	170-180	2.090	4106	100,100
DEG	LUMINOUS INTENSITY:cd									UNIT:lm		

**C Range: 0 - 360DEG**  
**C Interval: 30.0DEG**  
**Test Speed: HIGH**  
**Temperature:25.3DEG**  
**Operators:DAMIN**  
**Test Date:2022-04-23**

**$\gamma$  Range: 0 - 180DEG**  
 **$\gamma$  Interval: 1.0DEG**  
**Test System:EVERFINE GO-2000A\_V1 SYSTEM V2.00.443**  
**Humidity:65.0%**  
**Test Distance:8.000m [K=0.7063]**  
**Remarks:**

**LUMINANCE LIMITATION CURVES**

Test:U:220.60V I:0.1470A P:30.300W PF:0.9360 Freq:50.00Hz		
Lamp Flux:4105.9x1 lm		
Name: NS61-595X595-30W (Sensor)	Type: LED	
MFR.: Lumega Group	DIM.: 595*595mm	
	SUR.: 530*530mm	



LUMINANCE cd/(m2)		
G (DEG)	C0/180	C90/270
85	2516	2250
80	2980	2767
75	3449	3333
70	3791	3692
65	4053	3984
60	4249	4195
55	4401	4358
50	4524	4489
45	4612	4581

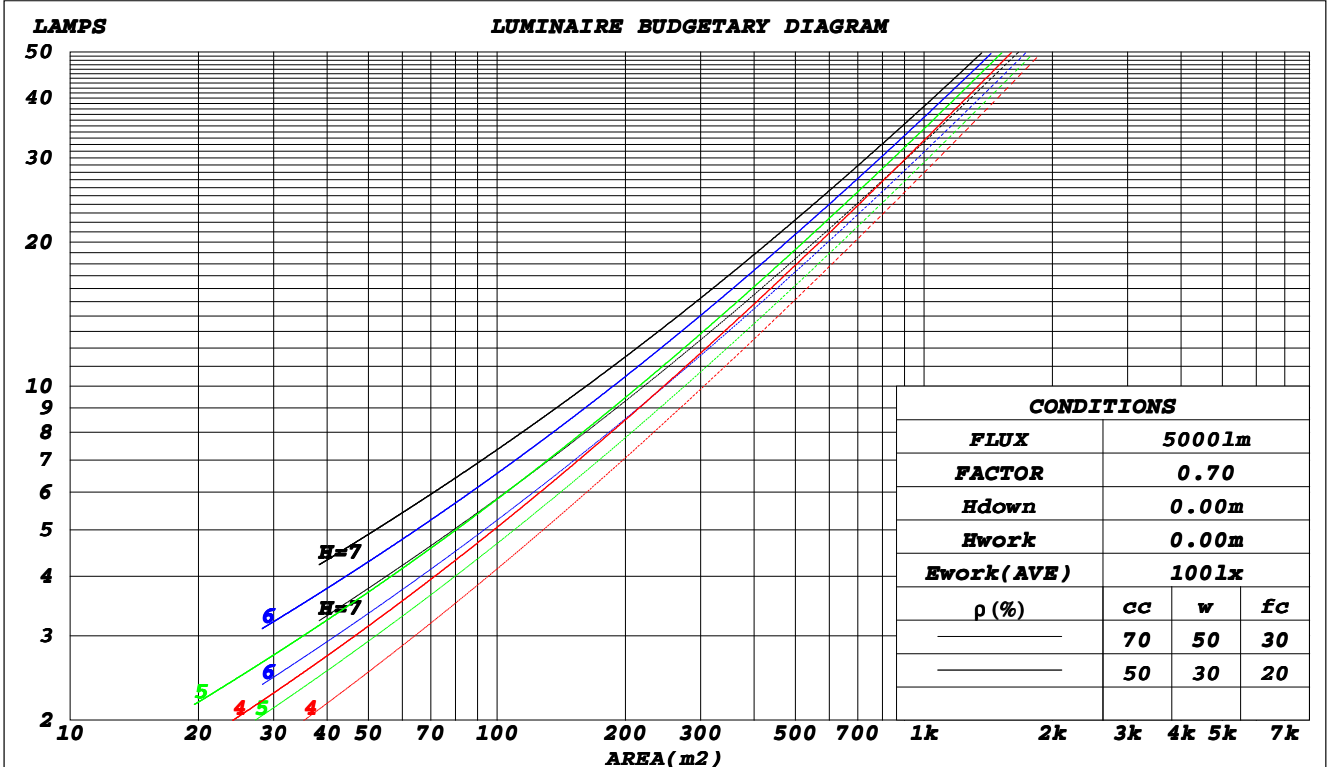
**C Range: 0 - 360DEG**  
**C Interval: 30.0DEG**  
**Test Speed: HIGH**  
**Temperature: 25.3DEG**  
**Operators: DAMIN**  
**Test Date: 2022-04-23**

**γ Range: 0 - 180DEG**  
**γ Interval: 1.0DEG**  
**Test System: EVERFINE GO-2000A\_V1 SYSTEM V2.00.443**  
**Humidity: 65.0%**  
**Test Distance: 8.000m [K=0.7063]**  
**Remarks:**

**CU AND LUMINAIRE BUDGETARY ESTIMATE DIAGRAM**

Test:U:220.60V I:0.1470A P:30.300W PF:0.9360 Freq:50.00Hz		
Lamp Flux:4105.9x1 lm		
Name: NS61-595X595-30W (Sensor)	Type: LED	
MFR.: Lumega Group	DIM.: 595*595mm	
	SUR.: 530*530mm	

$\rho_{cc}$	80%			70%			50%			30%			10%			0
$\rho_w$	50%	30%	10%	50%	30%	10%	50%	30%	10%	50%	30%	10%	50%	30%	10%	0
$\rho_{fc}$	20%			20%			20%			20%			20%			0
<b>RCR</b>	<b>RCR:Room Cavity Ratio</b>						<b>Coefficients of Utilization(CU)</b>									
0.0	1.19	1.19	1.19	1.15	1.15	1.15	1.10	1.10	1.10	1.05	1.05	1.05	.00	.00	.00	.98
1.0	1.03	.99	.95	1.01	.97	.93	.96	.93	.90	.92	.89	.87	.88	.86	.84	.81
2.0	.90	.83	.77	.88	.81	.76	.84	.79	.74	.80	.76	.72	.77	.73	.70	.68
3.0	.79	.71	.64	.77	.69	.63	.74	.67	.62	.71	.65	.61	.68	.63	.59	.57
4.0	.70	.61	.54	.68	.60	.54	.65	.58	.53	.63	.57	.52	.60	.55	.51	.49
5.0	.62	.53	.47	.61	.53	.46	.59	.51	.45	.56	.50	.45	.54	.49	.44	.42
6.0	.56	.47	.41	.55	.46	.40	.53	.45	.40	.51	.44	.39	.49	.43	.39	.37
7.0	.51	.42	.36	.50	.42	.36	.48	.41	.35	.46	.40	.35	.45	.39	.34	.32
8.0	.46	.38	.32	.46	.37	.32	.44	.37	.31	.43	.36	.31	.41	.35	.31	.29
9.0	.42	.34	.29	.42	.34	.29	.40	.33	.28	.39	.33	.28	.38	.32	.28	.26
10.0	.39	.31	.26	.39	.31	.26	.37	.30	.26	.36	.30	.25	.35	.29	.25	.23



C Range: 0 - 360DEG  
 C Interval: 30.0DEG  
 Test Speed: HIGH  
 Temperature: 25.3DEG  
 Operators: DAMIN  
 Test Date: 2022-04-23

$\gamma$  Range: 0 - 180DEG  
 $\gamma$  Interval: 1.0DEG  
 Test System: EVERFINE GO-2000A\_V1 SYSTEM V2.00.443  
 Humidity: 65.0%  
 Test Distance: 8.000m [K=0.7063]  
 Remarks:

**WEC AND CCEC**

Test:U:220.60V I:0.1470A P:30.300W PF:0.9360 Freq:50.00Hz		
Lamp Flux:4105.9x1 lm		
Name: NS61-595X595-30W (Sensor)	Type: LED	
MFR.: Lumega Group	DIM.: 595*595mm	
	SUR.: 530*530mm	

$\rho_{cc}$	80%			70%			50%			30%			10%			0
$\rho_w$	50%	30%	10%	50%	30%	10%	50%	30%	10%	50%	30%	10%	50%	30%	10%	0
$\rho_{fc}$	20%			20%			20%			20%			20%			0
<b>RCR</b>	<b>RCR:Room Cavity Ratio</b>						<b>Wall Exitance Coefficients(WEC)</b>									
0.0																
1.0	.312	.177	.056	.304	.174	.055	.290	.166	.053	.276	.159	.051	.264	.153	.049	
2.0	.292	.160	.049	.285	.157	.048	.273	.152	.047	.261	.146	.046	.250	.141	.045	
3.0	.270	.144	.043	.264	.141	.043	.252	.137	.042	.242	.133	.041	.232	.128	.040	
4.0	.249	.129	.038	.244	.127	.038	.233	.124	.037	.224	.120	.036	.215	.117	.036	
5.0	.230	.117	.034	.225	.116	.034	.216	.113	.033	.208	.110	.033	.200	.107	.032	
6.0	.213	.107	.031	.209	.106	.030	.201	.103	.030	.193	.100	.030	.186	.098	.029	
7.0	.198	.098	.028	.195	.097	.028	.187	.095	.027	.180	.092	.027	.174	.090	.027	
8.0	.185	.091	.025	.182	.090	.025	.175	.088	.025	.169	.086	.025	.163	.084	.024	
9.0	.174	.084	.023	.171	.083	.023	.165	.081	.023	.159	.080	.023	.154	.078	.023	
10.0	.163	.078	.022	.160	.077	.022	.155	.076	.021	.150	.074	.021	.145	.073	.021	

$\rho_{cc}$	80%			70%			50%			30%			10%			0
$\rho_w$	50%	30%	10%	50%	30%	10%	50%	30%	10%	50%	30%	10%	50%	30%	10%	0
$\rho_{fc}$	20%			20%			20%			20%			20%			0
<b>RCR</b>	<b>RCR:Room Cavity Ratio</b>						<b>Ceiling Cavity Exitance Coefficients(CCEC)</b>									
0.0	.208	.208	.208	.177	.177	.177	.121	.121	.121	.070	.070	.070	.022	.022	.022	
1.0	.198	.173	.151	.169	.149	.130	.116	.102	.090	.067	.059	.052	.021	.019	.017	
2.0	.190	.149	.115	.162	.128	.100	.111	.089	.069	.064	.052	.041	.021	.017	.013	
3.0	.182	.132	.092	.156	.114	.080	.107	.079	.056	.062	.046	.033	.020	.015	.011	
4.0	.174	.118	.076	.150	.102	.066	.103	.071	.046	.059	.042	.027	.019	.014	.009	
5.0	.167	.108	.065	.143	.094	.056	.099	.065	.040	.057	.038	.024	.018	.013	.008	
6.0	.160	.100	.057	.137	.086	.049	.095	.061	.035	.055	.036	.021	.018	.012	.007	
7.0	.153	.093	.051	.132	.081	.044	.091	.056	.031	.053	.033	.019	.017	.011	.006	
8.0	.146	.087	.046	.126	.076	.040	.087	.053	.029	.051	.031	.017	.016	.010	.006	
9.0	.140	.082	.043	.121	.071	.037	.084	.050	.027	.049	.030	.016	.016	.010	.005	
10.0	.135	.078	.040	.116	.068	.035	.081	.048	.025	.047	.028	.015	.015	.009	.005	

**C Range: 0 - 360DEG**  
**C Interval: 30.0DEG**  
**Test Speed: HIGH**  
**Temperature:25.3DEG**  
**Operators:DAMIN**  
**Test Date:2022-04-23**

**$\gamma$  Range: 0 - 180DEG**  
 **$\gamma$  Interval: 1.0DEG**  
**Test System:EVERFINE GO-2000A\_V1 SYSTEM V2.00.443**  
**Humidity:65.0%**  
**Test Distance:8.000m [K=0.7063]**  
**Remarks:**

**UGR(Unified Glare Rating) Table**

Test:U:220.60V I:0.1470A P:30.300W PF:0.9360 Freq:50.00Hz		
Lamp Flux:4105.9x1 lm		
Name: NS61-595X595-30W (Sensor)	Type: LED	
MFR.: Lumega Group	DIM.: 595*595mm	
	SUR.: 530*530mm	

ceiling/cavity	0.7	0.7	0.5	0.5	0.3	0.7	0.7	0.5	0.5	0.3
walls	0.5	0.3	0.5	0.3	0.3	0.5	0.3	0.5	0.3	0.3
working plane	0.2	0.2	0.2	0.2	0.2	0.2	0.2	0.2	0.2	0.2
Room dimensions	Viewed crosswise					Viewed endwise				
<b>x = 2H y = 2H</b>	17.7	19.2	18.0	19.5	19.7	17.7	19.2	18.0	19.4	19.7
3H	19.2	20.6	19.5	20.8	21.1	19.1	20.5	19.4	20.8	21.1
4H	19.7	21.1	20.1	21.3	21.7	19.6	21.0	20.0	21.2	21.6
6H	20.1	21.4	20.5	21.7	22.0	20.0	21.2	20.4	21.5	21.9
8H	20.2	21.4	20.6	21.7	22.1	20.1	21.3	20.5	21.6	21.9
12H	20.3	21.4	20.7	21.8	22.1	20.1	21.3	20.5	21.6	22.0
<b>4H 2H</b>	18.3	19.6	18.6	19.9	20.2	18.3	19.6	18.6	19.9	20.2
3H	19.9	21.1	20.3	21.4	21.7	19.9	21.0	20.2	21.3	21.7
4H	20.6	21.6	21.0	22.0	22.4	20.5	21.5	20.9	21.9	22.3
6H	21.1	22.0	21.5	22.4	22.8	20.9	21.9	21.4	22.3	22.7
8H	21.2	22.1	21.7	22.5	22.9	21.1	22.0	21.5	22.4	22.8
12H	21.3	22.1	21.8	22.6	23.0	21.2	22.0	21.6	22.4	22.8
<b>8H 4H</b>	20.8	21.7	21.2	22.1	22.5	20.7	21.6	21.2	22.0	22.4
6H	21.4	22.1	21.9	22.6	23.1	21.3	22.0	21.8	22.5	22.9
8H	21.7	22.3	22.1	22.8	23.3	21.5	22.1	22.0	22.6	23.1
12H	21.8	22.4	22.3	22.9	23.4	21.7	22.2	22.2	22.7	23.2
<b>12H 4H</b>	20.8	21.6	21.3	22.0	22.5	20.7	21.5	21.2	21.9	22.4
6H	21.5	22.1	21.9	22.6	23.1	21.3	22.0	21.8	22.4	22.9
8H	21.7	22.3	22.2	22.8	23.3	21.6	22.1	22.1	22.6	23.1
<b>Variations with the observer position at spacings(CIE Pub.117):</b>										
<b>S = 1.0H</b>	+ 0.2 / - 0.2					+ 0.2 / - 0.2				
1.5H	+ 0.2 / - 0.3					+ 0.2 / - 0.3				
2.0H	+ 0.2 / - 0.3					+ 0.2 / - 0.3				

CIE Pub.117, 4106 lm Total Lamp Luminous Flux Corrected (8log(F/F0) = 4.9)  
 Area: 0.28 m2

**C Range: 0 - 360DEG**  
**C Interval: 30.0DEG**  
**Test Speed: HIGH**  
**Temperature:25.3DEG**  
**Operators:DAMIN**  
**Test Date:2022-04-23**

**γ Range: 0 - 180DEG**  
**γ Interval: 1.0DEG**  
**Test System:EVERFINE GO-2000A\_V1 SYSTEM V2.00.443**  
**Humidity:65.0%**  
**Test Distance:8.000m [K=0.7063]**  
**Remarks:**

**UTILIZATION FACTORS TABLE**

Test:U:220.60V I:0.1470A P:30.300W PF:0.9360 Freq:50.00Hz Lamp Flux:4105.9x1 lm		
Name: NS61-595X595-30W (Sensor)	Type: LED	
MFR.: Lumega Group	DIM.: 595*595mm	
	SUR.: 530*530mm	

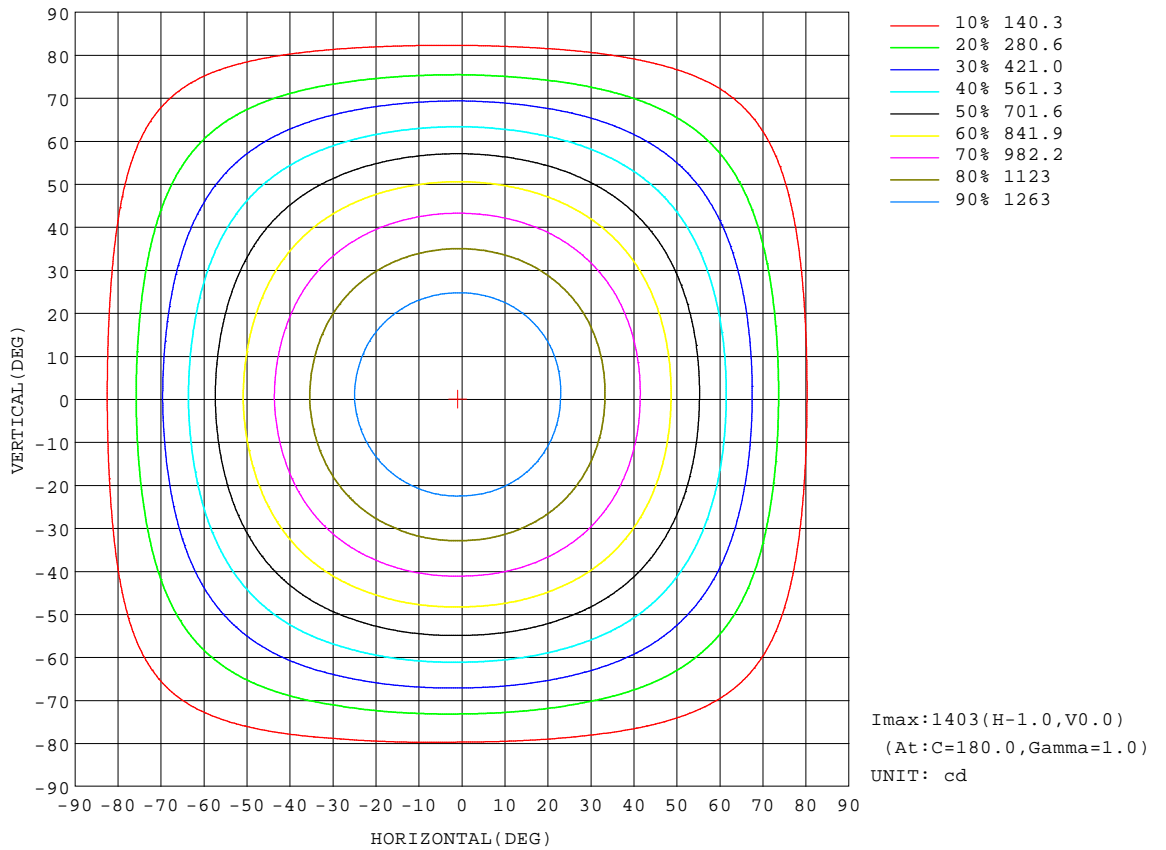
REFLECTANCE										
Ceiling	0.8	0.8	0.8	0.7	0.7	0.7	0.5	0.5	0.5	0
Walls	0.7	0.5	0.3	0.7	0.5	0.3	0.7	0.5	0.3	0
Working plane	0.2	0.2	0.2	0.2	0.2	0.2	0.2	0.2	0.2	0
<b>ROOM INDEX</b>	<b>UTILIZATION FACTORS(PERCENT) <math>k(RI) \times RCR = 5</math></b>									
<b>k = 0.60</b>	57	45	38	56	45	38	55	44	38	31
<b>0.80</b>	67	55	48	66	55	47	64	54	47	40
<b>1.00</b>	75	64	57	74	63	56	71	64	56	48
<b>1.25</b>	82	72	64	81	71	64	78	69	63	55
<b>1.50</b>	87	77	70	85	76	70	82	74	68	60
<b>2.00</b>	94	85	79	92	84	78	88	82	76	68
<b>2.50</b>	98	90	84	96	89	83	92	86	81	72
<b>3.00</b>	101	94	89	99	93	88	95	89	85	76
<b>4.00</b>	105	100	95	103	98	93	98	94	90	81
<b>5.00</b>	108	103	99	105	101	97	100	97	94	84
<b>ROOM INDEX</b>	<b>UF(total)</b>									<b>Direct</b>
<b>According to DIN EN 13032-2 2004</b>			<b>Suspended</b>				<b>SHRNOM = 1.25</b>			

**C Range: 0 - 360DEG**  
**C Interval: 30.0DEG**  
**Test Speed: HIGH**  
**Temperature:25.3DEG**  
**Operators:DAMIN**  
**Test Date:2022-04-23**

**$\gamma$  Range: 0 - 180DEG**  
 **$\gamma$  Interval: 1.0DEG**  
**Test System:EVERFINE GO-2000A\_V1 SYSTEM V2.00.443**  
**Humidity:65.0%**  
**Test Distance:8.000m [K=0.7063]**  
**Remarks:**

**ISOCANDELA DIAGRAM**

Test:U:220.60V I:0.1470A P:30.300W PF:0.9360 Freq:50.00Hz		
Lamp Flux:4105.9x1 lm		
Name: NS61-595X595-30W (Sensor)	Type: LED	
MFR.: Lumega Group	DIM.: 595*595mm	
	SUR.: 530*530mm	



**C Range: 0 - 360DEG**  
**C Interval: 30.0DEG**  
**Test Speed: HIGH**  
**Temperature:25.3DEG**  
**Operators:DAMIN**  
**Test Date:2022-04-23**

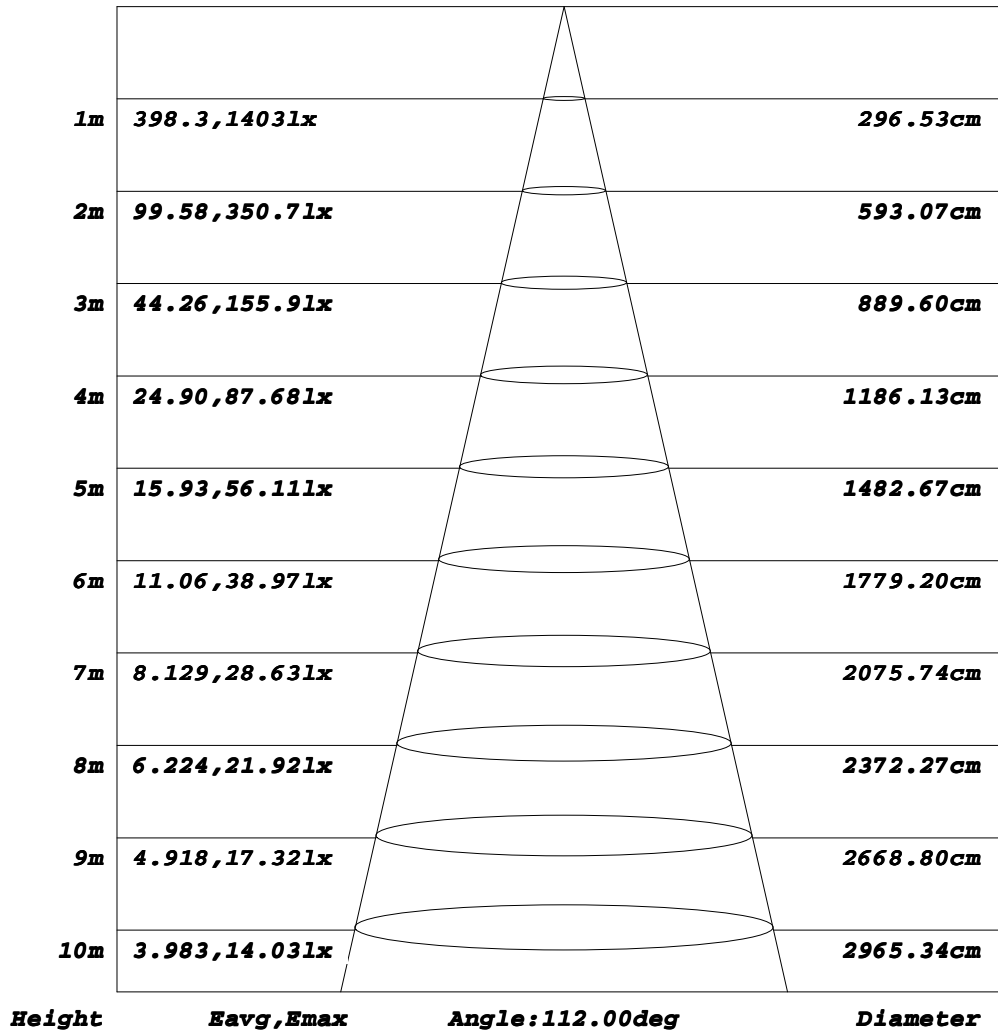
**γ Range: 0 - 180DEG**  
**γ Interval: 1.0DEG**  
**Test System:EVERFINE GO-2000A\_V1 SYSTEM V2.00.443**  
**Humidity:65.0%**  
**Test Distance:8.000m [K=0.7063]**  
**Remarks:**



**AAI Figure**

Test:U:220.60V I:0.1470A P:30.300W PF:0.9360 Freq:50.00Hz Lamp Flux:4105.9x1 lm		
Name: NS61-595X595-30W (Sensor)	Type: LED	
MFR.: Lumega Group	DIM.: 595*595mm	
	SUR.: 530*530mm	

**Flux out:2967 lm**



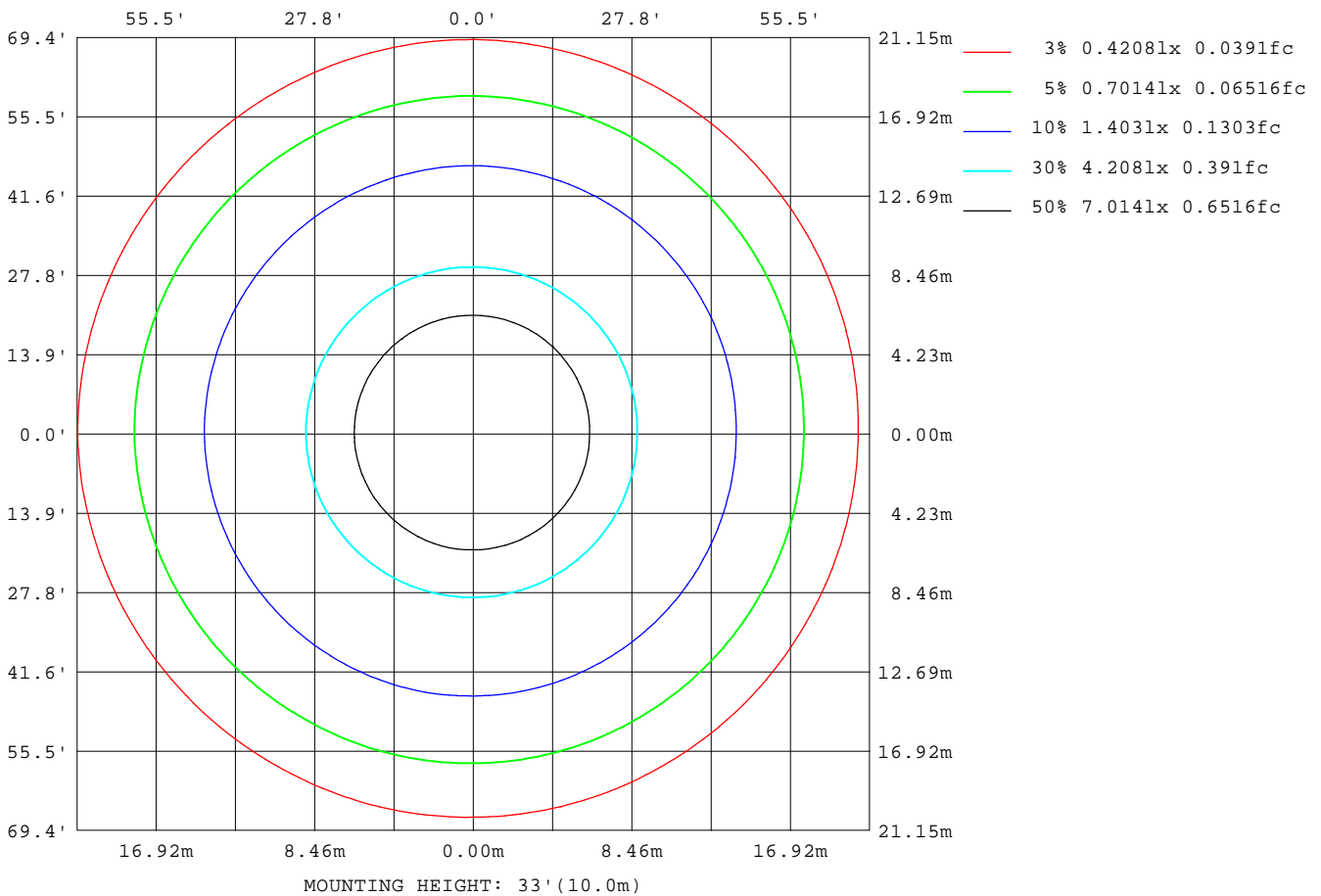
Note: The Curves indicate the illuminated area and the average illumination when the luminaire is at different distance.

**C Range: 0 - 360DEG**  
**C Interval: 30.0DEG**  
**Test Speed: HIGH**  
**Temperature: 25.3DEG**  
**Operators: DAMIN**  
**Test Date: 2022-04-23**

**γ Range: 0 - 180DEG**  
**γ Interval: 1.0DEG**  
**Test System: EVERFINE GO-2000A\_V1 SYSTEM V2.00.443**  
**Humidity: 65.0%**  
**Test Distance: 8.000m [K=0.7063]**  
**Remarks:**

**ISOLUX DIAGRAM**

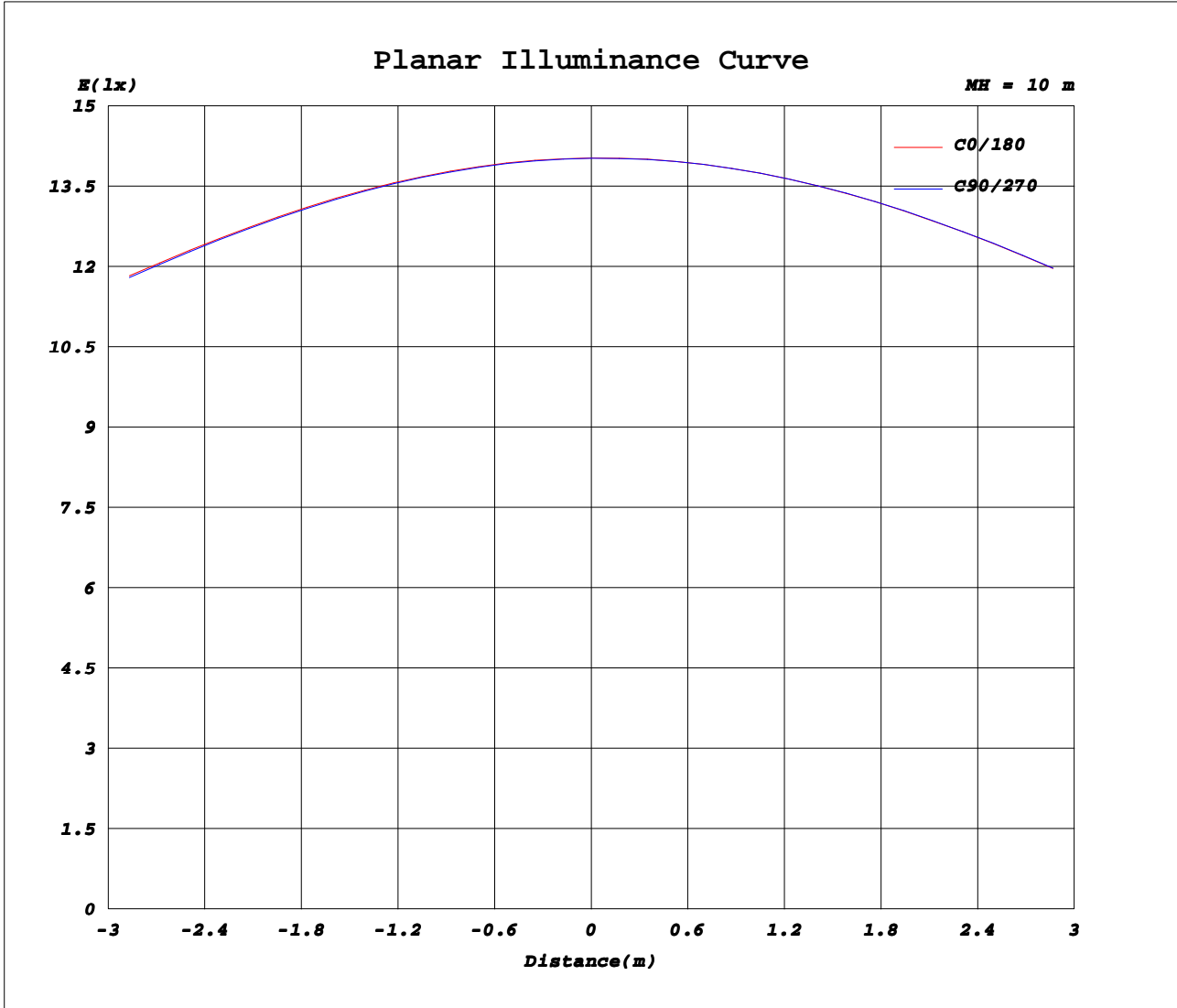
Test:U:220.60V I:0.1470A P:30.300W PF:0.9360 Freq:50.00Hz		
Lamp Flux:4105.9x1 lm		
Name: NS61-595X595-30W (Sensor)	Type: LED	
MFR.: Lumega Group	DIM.: 595*595mm	
	SUR.: 530*530mm	



**C Range: 0 - 360DEG**  
**C Interval: 30.0DEG**  
**Test Speed: HIGH**  
**Temperature: 25.3DEG**  
**Operators: DAMIN**  
**Test Date: 2022-04-23**

**γ Range: 0 - 180DEG**  
**γ Interval: 1.0DEG**  
**Test System: EVERFINE GO-2000A\_V1 SYSTEM V2.00.443**  
**Humidity: 65.0%**  
**Test Distance: 8.000m [K=0.7063]**  
**Remarks:**

**Planar Illuminance Curve**



**C Range: 0 - 360DEG**  
**C Interval: 30.0DEG**  
**Test Speed: HIGH**  
**Temperature: 25.3DEG**  
**Operators: DAMIN**  
**Test Date: 2022-04-23**

**γ Range: 0 - 180DEG**  
**γ Interval: 1.0DEG**  
**Test System: EVERFINE GO-2000A\_V1 SYSTEM V2.00.443**  
**Humidity: 65.0%**  
**Test Distance: 8.000m [K=0.7063]**  
**Remarks:**

**LUMINOUS DISTRIBUTION INTENSITY DATA**

Test:U:220.60V I:0.1470A P:30.300W PF:0.9360 Freq:50.00Hz		
Lamp Flux:4105.9x1 lm		
Name: NS61-595X595-30W (Sensor)	Type: LED	
MFR.: Lumega Group	DIM.: 595*595mm	
	SUR.: 530*530mm	

Table--1

UNIT: cd

C(DEG) γ (DEG)	0	30	60	90	120	150	180	210	240	270	300	330							
0	1403	1402	1402	1402	1403	1403	1403	1403	1402	1402	1403	1403							
5	1394	1393	1392	1393	1394	1397	1399	1400	1399	1399	1398	1396							
10	1373	1371	1370	1370	1373	1378	1383	1384	1384	1384	1381	1377							
15	1339	1337	1335	1336	1340	1347	1355	1356	1356	1355	1351	1346							
20	1295	1291	1289	1290	1296	1305	1314	1317	1316	1313	1310	1304							
25	1238	1234	1232	1233	1240	1251	1263	1265	1263	1260	1256	1249							
30	1171	1167	1165	1166	1174	1188	1201	1203	1200	1196	1191	1184							
35	1094	1091	1088	1088	1099	1114	1129	1130	1127	1122	1117	1108							
40	1008	1005	1002	1002	1014	1031	1047	1048	1044	1040	1034	1023							
45	913	910	907	907	920	939	956	957	953	949	942	930							
50	814	808	805	808	819	840	861	859	856	854	844	830							
55	707	699	696	700	712	733	754	754	750	747	737	724							
60	595	586	584	587	599	620	643	642	639	637	626	611							
65	480	469	467	471	483	505	529	528	524	522	511	497							
70	363	352	349	354	365	388	412	411	407	405	394	380							
75	250	238	236	242	252	273	297	296	292	290	280	266							
80	145	139	135	135	147	168	190	190	186	182	175	163							
85	61.4	57.9	55.0	54.9	64.2	79.4	95.0	98.5	97.3	93.6	87.8	77.4							
90	7.75	8.19	8.08	7.77	7.39	13.6	24.4	27.0	27.0	25.4	21.8	15.9							
95	8.72	8.90	8.77	8.52	8.66	9.61	10.9	10.9	10.7	10.7	10.9	10.4							
100	9.75	9.75	9.67	9.57	9.41	10.3	11.8	11.7	11.5	11.5	11.8	11.3							
105	10.7	10.6	10.6	10.6	10.3	11.1	12.7	12.7	12.5	12.5	12.7	12.2							
110	11.6	11.5	11.6	11.6	11.3	12.0	13.5	13.5	13.4	13.4	13.6	13.1							
115	12.4	12.4	12.4	12.4	12.2	12.9	14.3	14.3	14.2	14.2	14.4	13.9							
120	13.2	13.3	13.3	13.3	13.1	13.8	15.1	15.1	15.0	15.0	15.2	14.7							
125	14.1	14.1	14.2	14.2	14.0	14.6	15.9	15.9	15.8	15.8	15.9	15.4							
130	15.0	15.0	15.0	15.1	14.8	15.5	16.7	16.7	16.6	16.6	16.7	16.2							
135	15.8	15.8	15.9	16.0	15.7	16.3	17.5	17.5	17.3	17.3	17.4	17.0							
140	16.7	16.7	16.8	16.8	16.6	17.2	18.2	18.2	18.1	18.1	18.2	17.8							
145	17.6	17.6	17.7	17.8	17.6	18.0	19.0	19.0	18.9	18.8	18.9	18.6							
150	18.6	18.6	18.7	18.8	18.5	18.9	19.7	19.7	19.7	19.6	19.7	19.4							
155	19.7	19.5	19.6	19.8	19.5	19.7	20.4	20.5	20.4	20.4	20.4	20.2							
160	20.5	20.4	20.5	20.6	20.3	20.5	21.1	21.1	21.1	21.1	21.1	20.9							
165	21.1	21.1	21.2	21.3	21.1	21.2	21.6	21.6	21.6	21.6	21.6	21.4							
170	21.5	21.5	21.6	21.7	21.5	21.6	21.9	21.9	21.9	22.0	22.0	21.8							
175	21.8	21.8	21.9	21.9	21.8	21.9	22.0	22.1	22.1	22.1	22.1	22.0							
180	21.9	22.0	22.1	22.1	22.1	22.0	22.0	22.0	22.1	22.1	22.1	22.0							

**C Range: 0 - 360DEG**  
**C Interval: 30.0DEG**  
**Test Speed: HIGH**  
**Temperature:25.3DEG**  
**Operators:DAMIN**  
**Test Date:2022-04-23**

**γ Range: 0 - 180DEG**  
**γ Interval: 1.0DEG**  
**Test System:EVERFINE GO-2000A\_V1 SYSTEM V2.00.443**  
**Humidity:65.0%**  
**Test Distance:8.000m [K=0.7063]**  
**Remarks:**